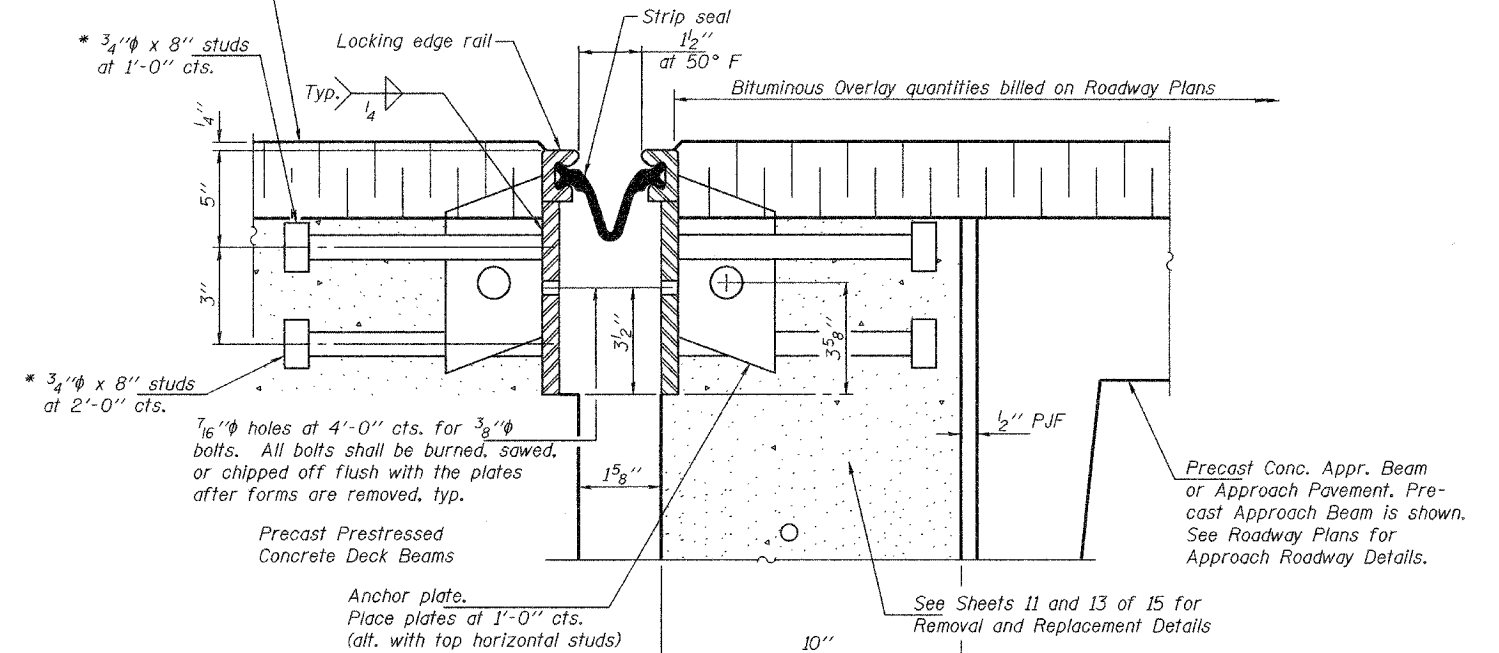
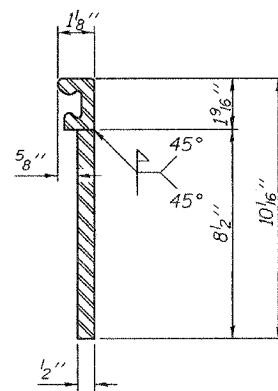


Bituminous Concrete Surface Course
and Waterproofing Membrane System

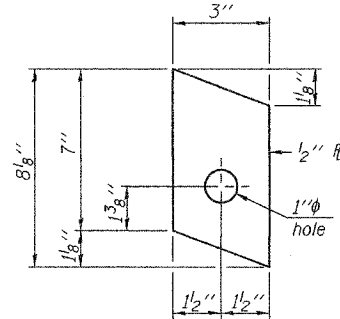


SECTION THRU ABUTMENT

* Granular or solid flux filled headed studs conforming to Article 1006.32 of the Std. Specs., automatically end welded. (186 Required).



LOCKING EDGE RAIL



ANCHOR PLATE
(124 Required)

The inside of the locking edge rail groove shall be free of weld residue.

Notes:

The strip seal shall be made continuous and shall have a minimum thickness of 1/4". The configuration of the strip seal shall match the configuration of the Locking Edge Rails.

The height and thickness of the Locking Edge Rails shown are minimum dimensions. The actual configuration of the Locking Edge Rails and matching strip seal may vary from manufacturer to manufacturer. Flanged edge rails will not be allowed. Locking Edge Rails may be spliced at slope discontinuities and stage construction joints.

The manufacturer's recommended installation methods shall be followed. Joint openings shall be adjusted according to Article 503.10(c) of the Standard Specifications when the blockouts are poured at an ambient temperature other than 50° F.

BILL OF MATERIAL

Item	Unit	Total
Preformed Joint Strip Seal	Foot	62

ILLINOIS DEPARTMENT OF TRANSPORTATION	
SHEET TITLE EXPANSION JOINT DETAILS	
PROJECT IL RTE 177 OVER GRAND POINT CRK FAS ROUTE 819 SECTION 101BR-3 WASHINGTON COUNTY STATION 160+70.00 STRUCTURE NUMBER 095-0021	PROJECT NO. 05028-4 SCALE DATE 05/09/06 DRAWN BY TFG CHECKED BY CME/AMCB
COOMBE-BLOXDORF P.C. Engineers / Land Surveyors Springfield, Illinois Design Firm License No. 184-002703	10 OF 15 SHTS

July 13, 2006 VHV