

SUMMARY OF QUANTITIES

F.A.S. RTE.	SECTION	COUNTY	TOTAL SHEETS	SHEET NO.
819	101BR-3	WASHINGTON	24	3
STA.		TO STA.		
FED. ROAD DIST. NO.		ILLINOIS FED. AID PROJECT		

SUMMARY OF QUANTITIES			80% FED. 20% STATE TOTAL QUANTITIES	CONSTRUCTION TYPE CODE	
CODE NO	ITEM	UNIT		X080-2A	SFTY-3N
20200500	EARTH EXCAVATION (WIDENING)	CU YD	16	16	
20400800	FURNISHED EXCAVATION	CU YD	67	67	
25000210	SEEDING, CLASS 2A	ACRE	0.25	0.25	
25100105	MULCH, METHOD 1	ACRE	0.25	0.25	
28100109	STONE RIPRAP, CLASS A5	SQ YD	754	754	
28200200	FILTER FABRIC	SQ YD	754	754	
40600200	BITUMINOUS MATERIALS (PRIME COAT)	TON	0.2	0.2	
40600300	AGGREGATE (PRIME COAT)	TON	0.8	0.8	
40600990	TEMPORARY RAMP	SQ YD	167	167	
44000030	BITUMINOUS SURFACE REMOVAL (VARIABLE DEPTH)	SQ YD	400	400	
44300200	STRIP REFLECTIVE CRACK CONTROL TREATMENT	FOOT	580	580	
50101500	REMOVAL OF EXISTING SUPERSTRUCTURES	EACH	1	1	
50102400	CONCRETE REMOVAL	CU YD	3.5	3.5	
50300225	CONCRETE STRUCTURES	CU YD	4.9	4.9	
50400105	PRECAST CONCRETE BRIDGE SLAB	SQ FT	359	359	
50400405	PRECAST PRESTRESSED CONCRETE DECK BEAMS (21" DEPTH)	SQ FT	3074	3074	
50800205	REINFORCEMENT BARS, EPOXY COATED	POUND	470	470	
50901005	STEEL BRIDGE RAIL, TYPE SM	FOOT	300	300	
51500100	NAME PLATES	EACH	1	1	
58100200	WATERPROOFING MEMBRANE SYSTEM	SQ YD	349	349	
58300100	PORTLAND CEMENT MORTAR FAIRING COURSE	FOOT	893	893	
* 63100087	TRAFFIC BARRIER TERMINAL, TYPE 6A	EACH	4	4	
* 63100167	TRAFFIC BARRIER TERMINAL TYPE 1, SPECIAL (TANGENT)	EACH	4	4	
63200305	STEEL PLATE BEAM GUARD RAIL REMOVAL	FOOT	326	326	
67000400	ENGINEER'S FIELD OFFICE, TYPE A	CAL MO	6	6	
67100100	MOBILIZATION	L SUM	1	1	
70100500	TRAFFIC CONTROL AND PROTECTION, STANDARD 701326	L SUM	1	1	
70101205	TRAFFIC CONTROL AND PROTECTION, STANDARD 701321 (SPECIAL)	EACH	1	1	
70103815	TRAFFIC CONTROL SURVEILLANCE	CAL DA	40	40	
70106500	TEMPORARY BRIDGE TRAFFIC SIGNALS	EACH	1	1	
70300220	TEMPORARY PAVEMENT MARKING - LINE 4"	FOOT	498	498	
70300240	TEMPORARY PAVEMENT MARKING - LINE 6"	FOOT	700	700	
70301000	WORK ZONE PAVEMENT MARKING REMOVAL	SQ FT	166	166	

SUMMARY OF QUANTITIES			80% FED. 20% STATE TOTAL QUANTITIES	CONSTRUCTION TYPE CODE	
CODE NO	ITEM	UNIT		X080-2A	SFTY-3N
70400500	TEMPORARY CONCRETE BARRIER (STATE OWNED)	FOOT	350	350	
70400600	RELOCATE TEMPORARY CONCRETE BARRIER (STATE OWNED)	FOOT	350	350	
* 78000200	THERMOPLASTIC PAVEMENT MARKING - LINE 4"	FOOT	675	675	
* 78100100	RAISED REFLECTIVE PAVEMENT MARKER	EACH	2	2	
* 78100105	RAISED REFLECTIVE PAVEMENT MARKER (BRIDGE)	EACH	2	2	
* 78200410	GUARDRAIL MARKERS, TYPE A	EACH	10	10	
* 78200530	BARRIER WALL MARKERS, TYPE C	EACH	10	10	
* 78201000	TERMINAL MARKER - DIRECT APPLIED	EACH	4	4	
78300100	PAVEMENT MARKING REMOVAL	SQ FT	72	72	
78300200	RAISED REFLECTIVE PAVEMENT MARKER REMOVAL	EACH	2	2	
X0322379	CONCRETE SEALER	SQ YD	39	39	
X0323397	BRIDGE JOINT SYSTEM (EXPANSION), 1"	FOOT	62	62	
X0324744	REMOVAL OF EXISTING PRECAST CONCRETE UNITS	SQ FT	359	359	
X0325214	PREFORMED JOINT STRIP SEAL, 4"	FOOT	62	62	⚠
X0325303	STRUCTURAL REPAIR OF CONCRETE (DEPTH GREATER THAN 5 INCHES)	SQ FT	4	4	
X0325305	STRUCTURAL REPAIR OF CONCRETE (DEPTH EQUAL TO OR LESS THAN 5 INCHES)	SQ FT	41	41	
X3560130	BITUMINOUS CONCRETE BASE COURSE WIDENING, SUPERPAVE 9 INCH	SQ YD	66	66	
X4066416	BITUMINOUS CONCRETE SURFACE COURSE, SUPERPAVE, MIX "C", N70	TON	86	86	
X4066770	LEVELING BINDER (MACHINE METHOD), SUPERPAVE N70	TON	21	21	
X7200200	WIDE LOAD SIGNING	L SUM	1	1	
Z0001900	ASBESTOS BEARING PAD REMOVAL	EACH	22	22	
Z0002600	BAR SPLICERS	EACH	12	12	
Z0030250	IMPACT ATTENUATORS, TEMPORARY (NON-REDIRECTIVE), TEST LEVEL 3	EACH	2		2
Z0030350	IMPACT ATTENUATORS, RELOCATE (NON-REDIRECTIVE), TEST LEVEL 3	EACH	2		2
X0325294	PREFORMED JOINT STRIP SEAL	FOOT	62	62	

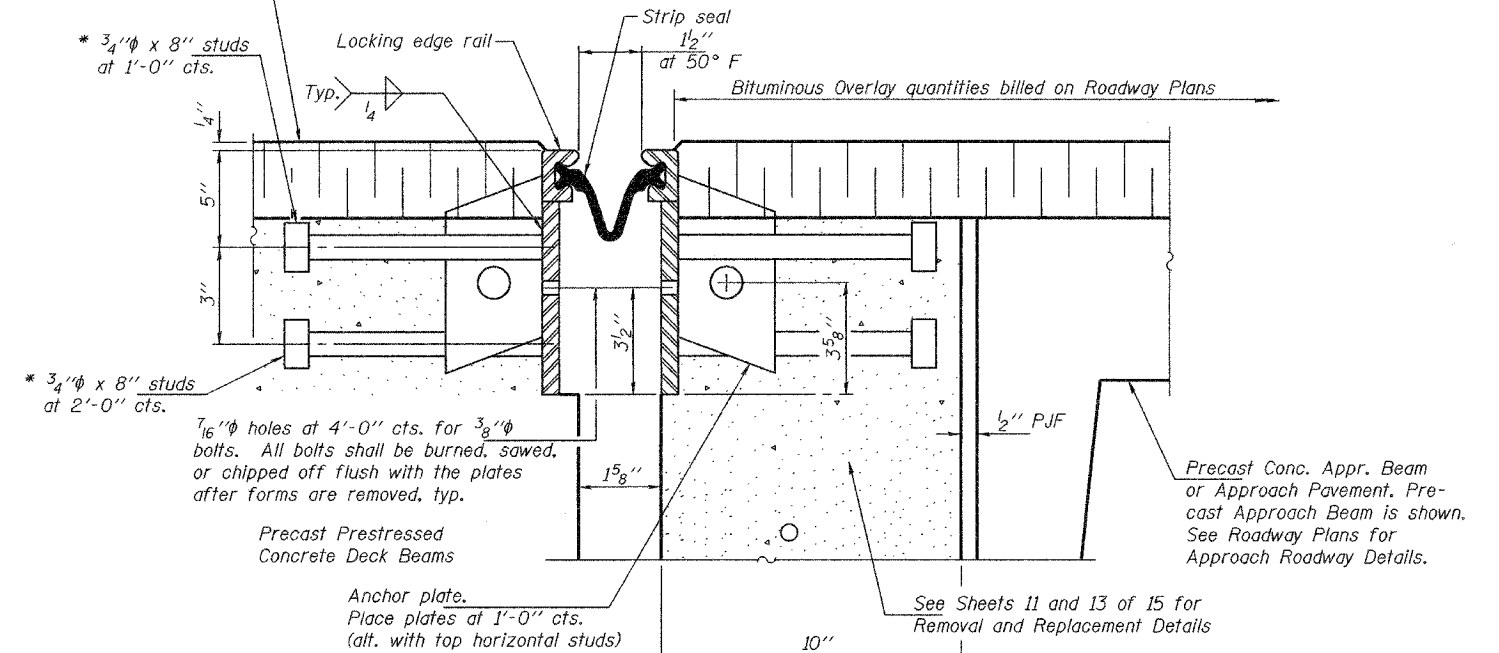
PLOT DATE = 5/15/2006
 FILE NAME = c:\pcc\projects\101BR-3\101BR-3.dgn
 PLOT SCALE = 48.0000 / IN.
 REFERENCE = REF*

*SPECIALTY ITEMS

⚠ Rev. 7-19-06

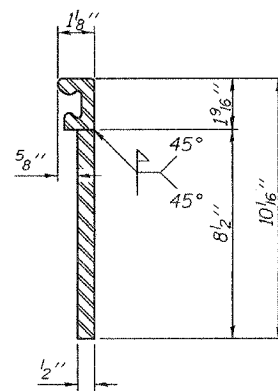
Rev.

Bituminous Concrete Surface Course
and Waterproofing Membrane System

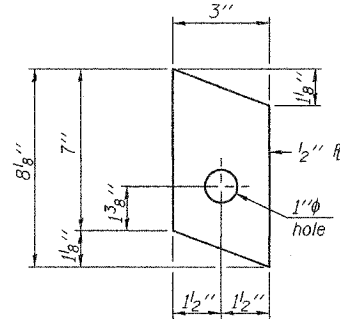


SECTION THRU ABUTMENT

* Granular or solid flux filled headed studs conforming to Article 1006.32 of the Std. Specs., automatically end welded. (186 Required).



LOCKING EDGE RAIL



ANCHOR PLATE
(124 Required)

The inside of the locking edge rail groove shall be free of weld residue.

Notes:

The strip seal shall be made continuous and shall have a minimum thickness of 1/4". The configuration of the strip seal shall match the configuration of the Locking Edge Rails.

The height and thickness of the Locking Edge Rails shown are minimum dimensions. The actual configuration of the Locking Edge Rails and matching strip seal may vary from manufacturer to manufacturer. Flanged edge rails will not be allowed. Locking Edge Rails may be spliced at slope discontinuities and stage construction joints.

The manufacturer's recommended installation methods shall be followed. Joint openings shall be adjusted according to Article 503.10(c) of the Standard Specifications when the blockouts are poured at an ambient temperature other than 50° F.

BILL OF MATERIAL

Item	Unit	Total
Preformed Joint Strip Seal	Foot	62

ILLINOIS DEPARTMENT OF TRANSPORTATION	
SHEET TITLE EXPANSION JOINT DETAILS	
PROJECT IL RTE 177 OVER GRAND POINT CRK FAS ROUTE 819 SECTION 101BR-3 WASHINGTON COUNTY STATION 160+70.00 STRUCTURE NUMBER 095-0021	PROJECT NO. 05028-4 SCALE DATE 05/09/06 QUANTITY BY TFG CHECKED BY CME/AMCB
COOMBE-BLOXDORF P.C. Engineers / Land Surveyors Springfield, Illinois Design Firm License No. 184-002703	10 OF 15 SHTS

July 13, 2006 VHV