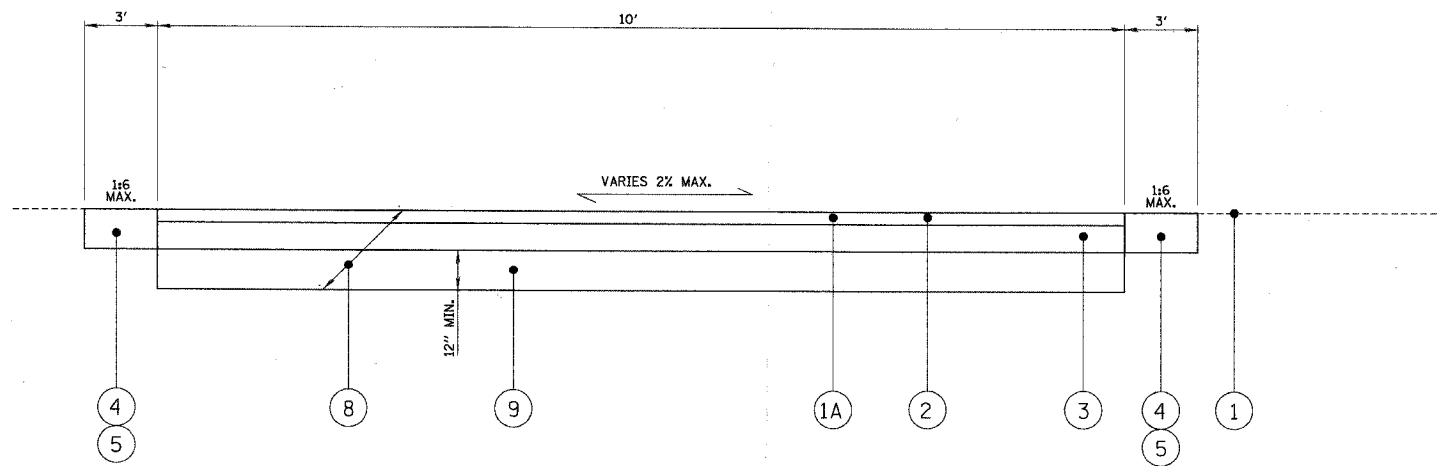


F.A.U. RTE.	SECTION	COUNTY	TOTAL SHEETS	SHEET NO.
--	00-P4003-00-BT	WILL	57	4
STA.		TO STA.		
FED. ROAD DIST. NO. 1		ILLINOIS	FED. AID PROJECT	

83532

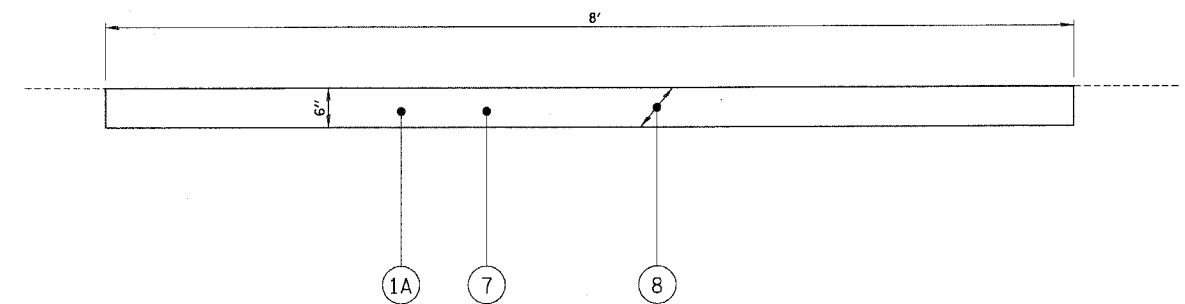
LEGEND:

- ① EXISTING GRADE
- ①A EXISTING PATH
- ② AGGREGATE SURFACE COURSE, TYPE B (SPECIAL)
- ③ PROPOSED AGGREGATE BASE COURSE TYPE B, 8"
- ④ PROPOSED TOPSOIL EXCAVATION AND PLACEMENT, 4"
- ⑤ PROPOSED HYDRO SEEDING W/MULCH, METHOD 2
- ⑦ PROPOSED WOOD CHIPS 6"
- ⑧ REMOVAL AND DISPOSAL OF UNSUITABLE MATERIAL
- ⑨ PROPOSED POROUS GRANULAR EMBANKMENT, SUBGRADE



EXISTING AND PROPOSED BIKE PATH TYPICAL CROSS SECTION

STA. 10+00 TO STA. 45+40.09
 STA. 63+52.52 TO STA. 74+38.38
 STA. 80+36.26 TO STA. 82+55.80
 STA. 90+00 TO STA. 91+30.87
 STA. 95+00 TO STA. 96+59.25



EXISTING AND PROPOSED WALKING PATH TYPICAL CROSS SECTION

STA. 100+00 TO STA. 111+39.86
 STA. 120+00 TO STA. 131+70.99
 STA. 140+00 TO STA. 144+09.66
 STA. 150+00 TO STA. 151+42.62
 STA. 160+00 TO STA. 160+62.72
 STA. 170+00 TO STA. 172+12.17

SOILS NOTE:

POROUS GRANULAR EMBANKMENT SUBGRADE (PGES) HAS BEEN PROVIDED AT THE LOCATIONS INDICATED FOR SOILS WHICH TEND TO BE UNSTABLE WHEN WET. ACTUAL NEED FOR REMOVAL AND REPLACEMENT WITH PGE WILL BE DETERMINED IN THE FIELD AT THE TIME OF CONSTRUCTION BY THE ENGINEER (BY USE OF A CONE PENETROMETER IN CONJUNCTION WITH THE IDOT SUBGRADE MANUAL). IF UNSUITABLE SOILS ARE ENCOUNTERED THE SOILS SHALL BE REMOVED AND REPLACED WITH PGE AND GROUND FABRIC FOR GROUND STABILIZATION. IF UNSUITABLE SOILS ARE NOT ENCOUNTERED, THEN THE QUANTITY WILL BE DEDUCTED AND NO ADDITIONAL COMPENSATION WILL BE DUE TO THE CONTRACTOR.

REVISIONS NAME	DATE
STRUCTURE REVISIONS	7/5/02

ILLINOIS DEPARTMENT OF TRANSPORTATION

TYPICAL SECTIONS

SCALE: VERT. N.T.S.
 HORIZ. N.T.S.
 DATE 5/23/2006

DRAWN BY JOC
 CHECKED BY LMF

NH\lockport\001-2580\DESIGN\0125-dpw.txd