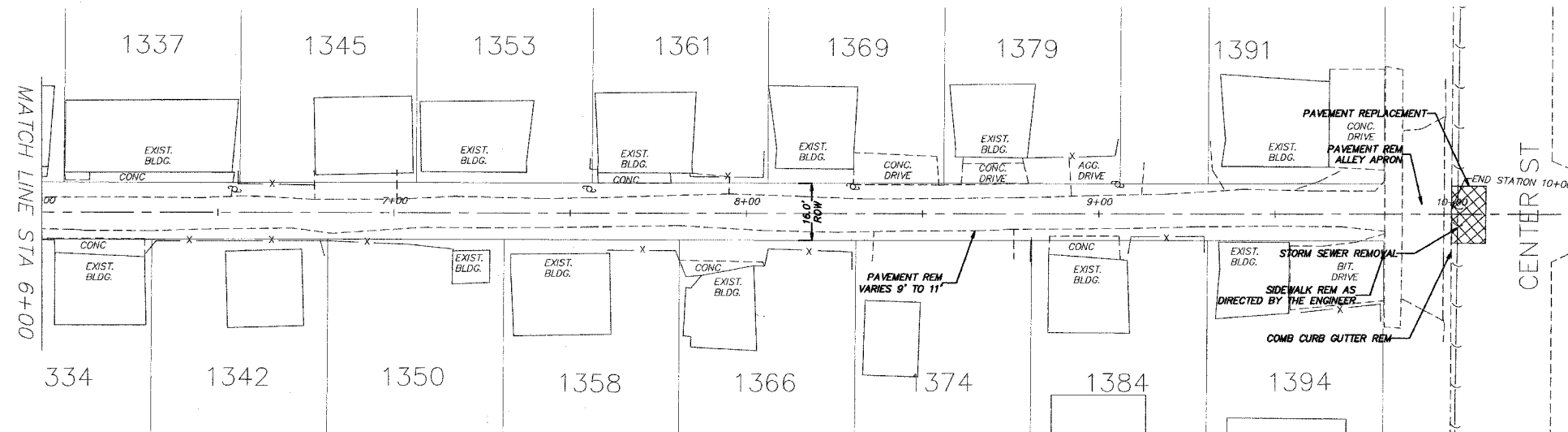
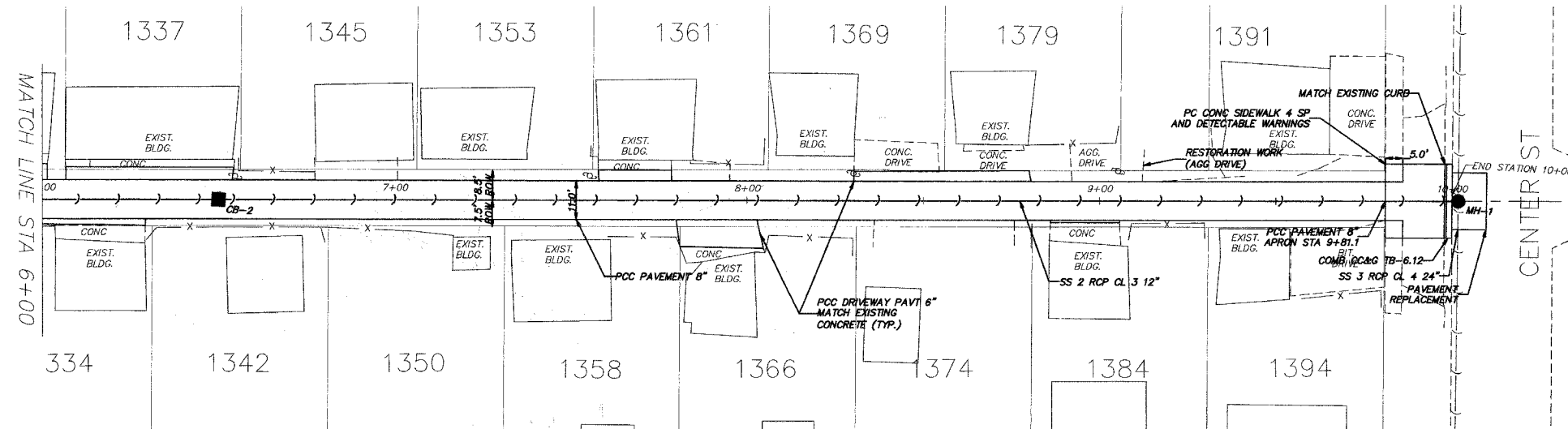


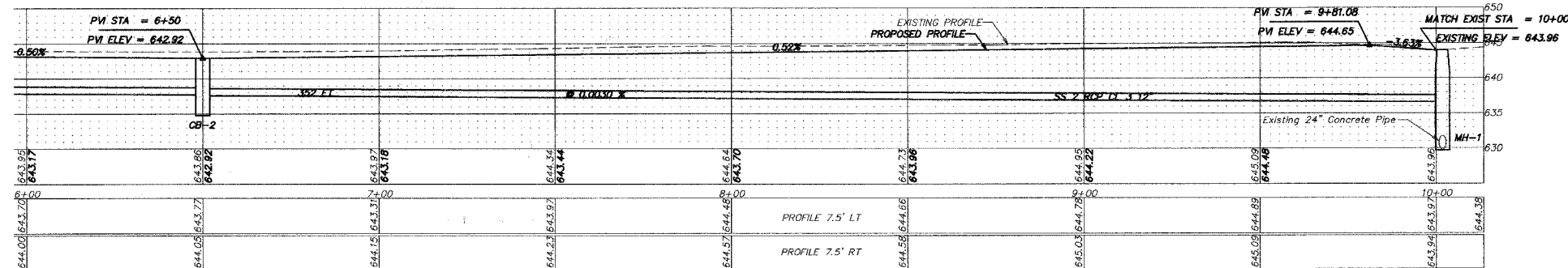
P.A. RTE.	SECTION	COUNTY	TOTAL SHEETS	SHEET NO.
09-0194-00-0P		COOK	58	14
STA.		TO STA.		
FED. ROAD DIST. NO.		ILLINOIS FED. AID PROJECT		



EXISTING



PROPOSED



PROPOSED STRUCTURE DATA:
 CB-1 CB TY C 2 FT DIA
 ROUND FRAME AND OPEN LID
 STA-8+50
 RIM-642.92
 INV.-637.72 (W)
 INV.-637.62 (E)

**MH-1 MH TY A 4 FT DIA
 ROUND FRAME AND CLOSED LID
 STA-10+02
 RIM-644.01
 INV.-629.81 (N-S)
 INV.-638.58 (W)
 INSTALL NEW MANHOLE OVER EXISTING PIPE**

REVISIONS	
NAME	DATE

ILLINOIS DEPARTMENT OF TRANSPORTATION
 CITY OF DES PLAINES - ALLEY IMPROVEMENTS
 HENRY - CAMPBELL ALLEY
 ON RR TO CENTER

PLAN AND PROFILE

STA 6+00 TO 10+00

SCALE: VERT. 1" = 5'
 HORIZ. 1" = 20'
 DATE 2-17-06 DRAWN BY BLS
 CHECKED BY AJD