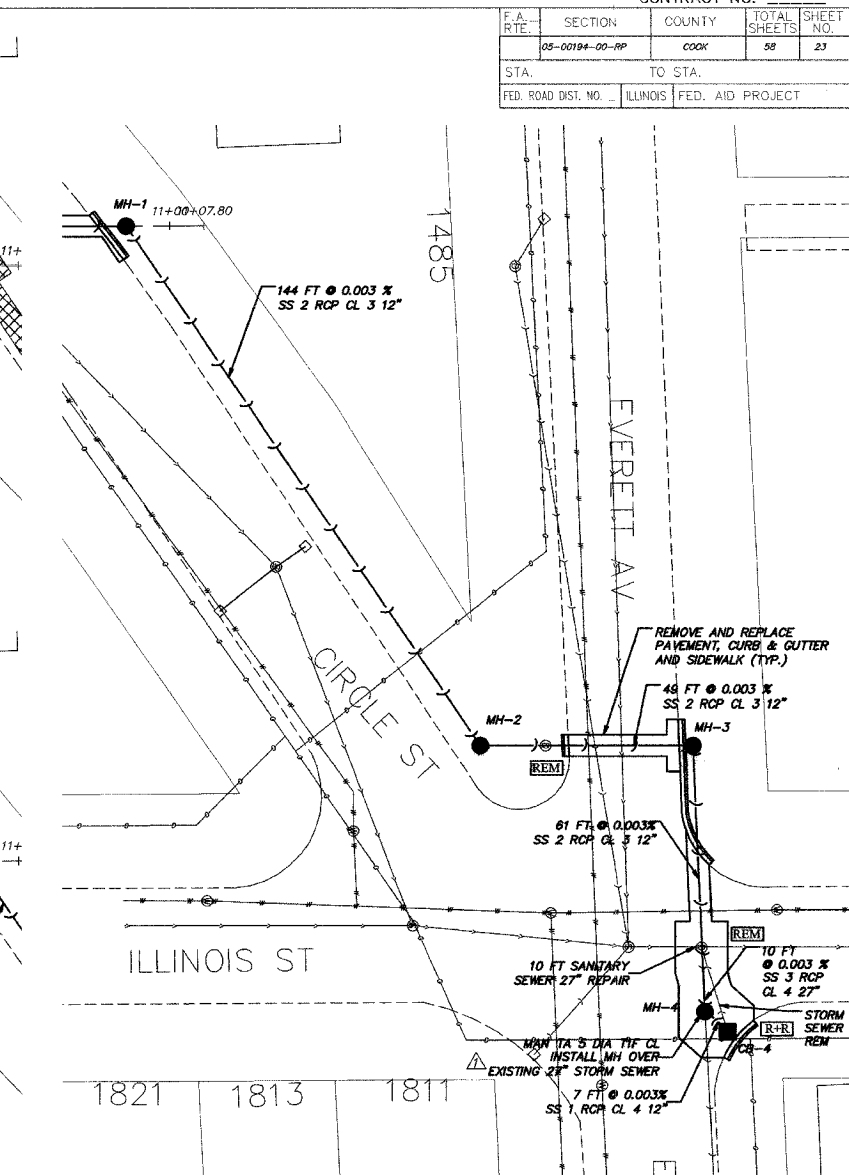
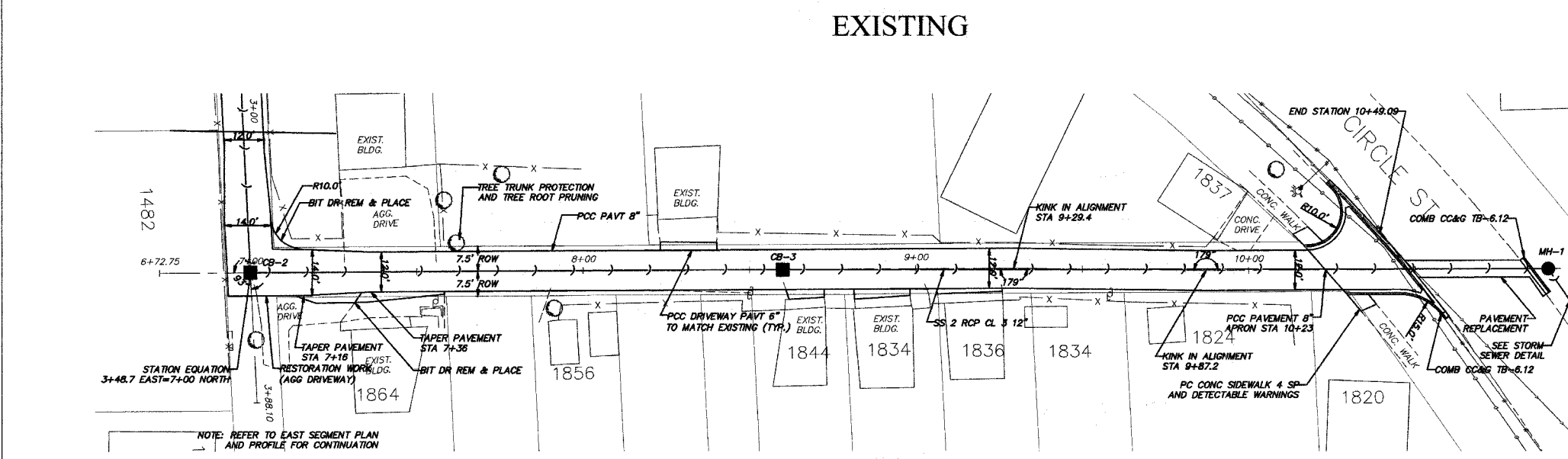
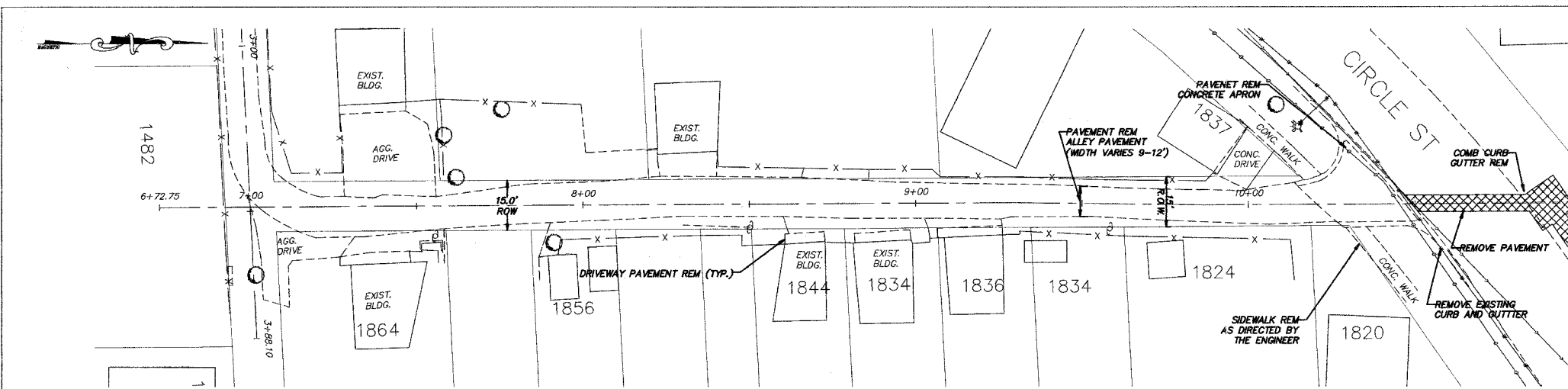
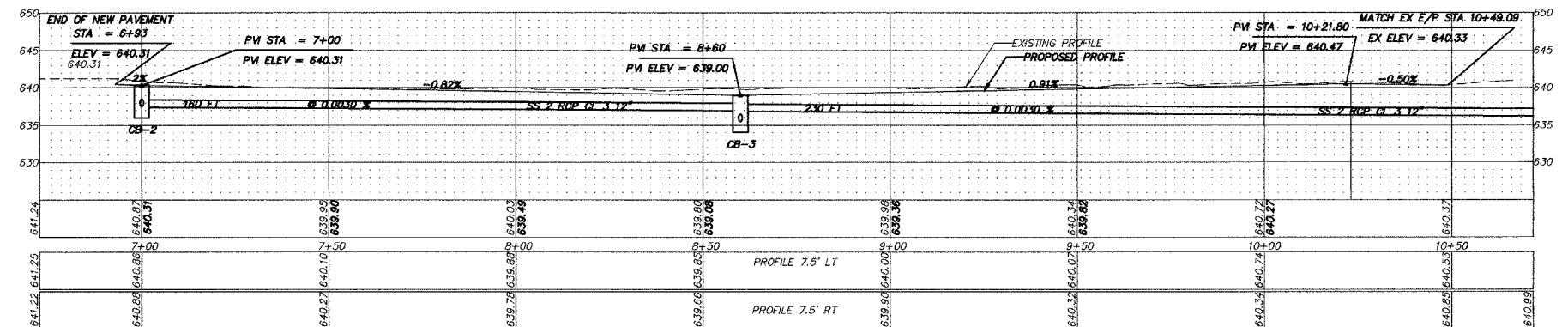


F.A. RTE.	SECTION	COUNTY	TOTAL SHEETS	SHEET NO.
05-00194-00-RP		COOK	58	23
STA.	TO STA.			
FED. ROAD DIST. NO.	ILLINOIS	FED. AID PROJECT		



NOTE: THE PROPOSED STORM SEWER SYSTEM SHALL DISCHARGE TO A WATERWAY THAT IS DIRECTLY TRIBUTARY TO A WATERWAY AS SHOWN ON THE PLANS, AND SHALL NOT DISCHARGE DIRECTLY OR INDIRECTLY TO A COMBINED SEWER SYSTEM WITHOUT WRITTEN APPROVAL OF THE CHIEF ENGINEER.



PROPOSED STRUCTURE DATA:
 CB-2 CB TY A 4 FT DIA ROUND FRAME OPEN LID STA-7+00 0' R RM-640.31 INV.-637.52 (W) INV.-637.42 (N)

CB-3 CB TY A 4 FT DIA ROUND FRAME OPEN LID STA-8+80 0' R RM-639.00 INV.-636.94 (S) INV.-636.84 (N)

MH-1 MH TY A 4 FT DIA ROUND FRAME CLOSED LID STA-10+90 0' R RM-640.85 INV.-638.15 (S) INV.-638.05 (NE)

MH-2 MH TY A 4 FT DIA ROUND FRAME CLOSED LID IN WEST PARKWAY AT ILLINOIS/EVERETT RM-641.00 INV.-635.62 (SW) INV.-633.00 (N)

MH-3 MH TY A 4 FT DIA ROUND FRAME CLOSED LID IN NORTHWEST PARKWAY AT ILLINOIS/EVERETT RM-641.00 INV.-632.85 (S) INV.-632.75 (E)

MH-4 MH TY A 5 FT DIA ROUND FRAME CLOSED LID IN PAVEMENT AT ILLINOIS/EVERETT RM-640.93 INV.-637.73 (NE) INV.-632.57 (W) INV.-628.91 (E) INSTALL MH OVER EXISTING 27" PIPE

CB-4 CB TY C 2 FT DIA ROUND FRAME OPEN LID IN NORTHEAST CURB LINE AT ILLINOIS/EVERETT RM-640.25 INV.-637.75 (SW)

REVISIONS	NAME	DATE
1	CORRECTED PIPE SIZE	4-1-06
2	ADDED MWDRD NOTE	

ILLINOIS DEPARTMENT OF TRANSPORTATION
 CITY OF DES PLAINES - ALLEY IMPROVEMENTS
 CIRCLE - ILLINOIS ALLEY
 CIRCLE TO CIRCLE
 PLAN AND PROFILE (NORTH SEGMENT)
 STA 6+93 TO 10+49.09
 SCALE: VERT. 1" = 5'
 HORIZ. 1" = 20'
 DATE 2-17-06
 DRAWN BY BLS
 CHECKED BY AJD

PLOT DATE = 2/19/2006 3:48:57 PM
 FILE NAME = W:\ENGINEERING\LAND PROJECTS\2006\806205-182 ALLEY.DWG\806205 182 ALLEY.DWG
 PLOT SCALE = 1" = 20'
 USER NAME = JLDOLLES