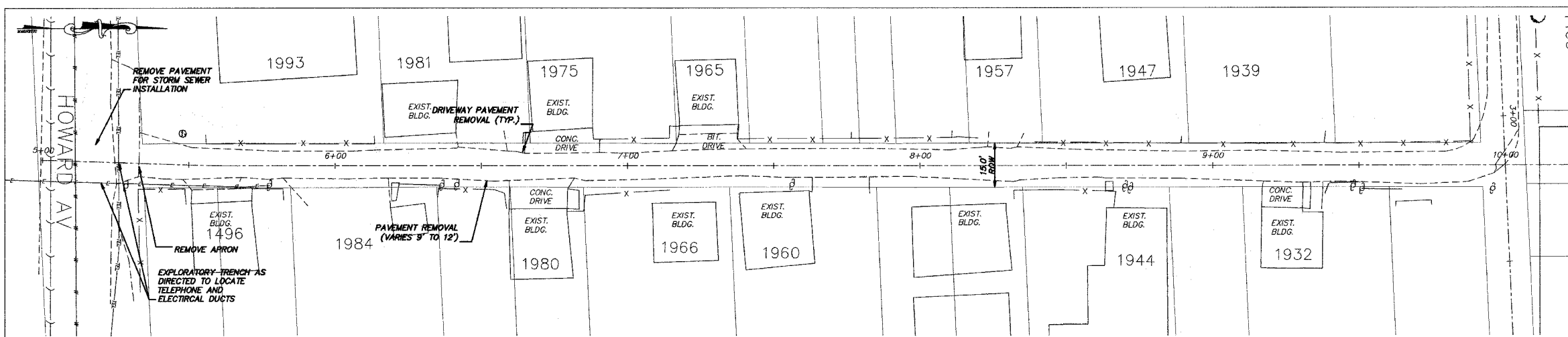
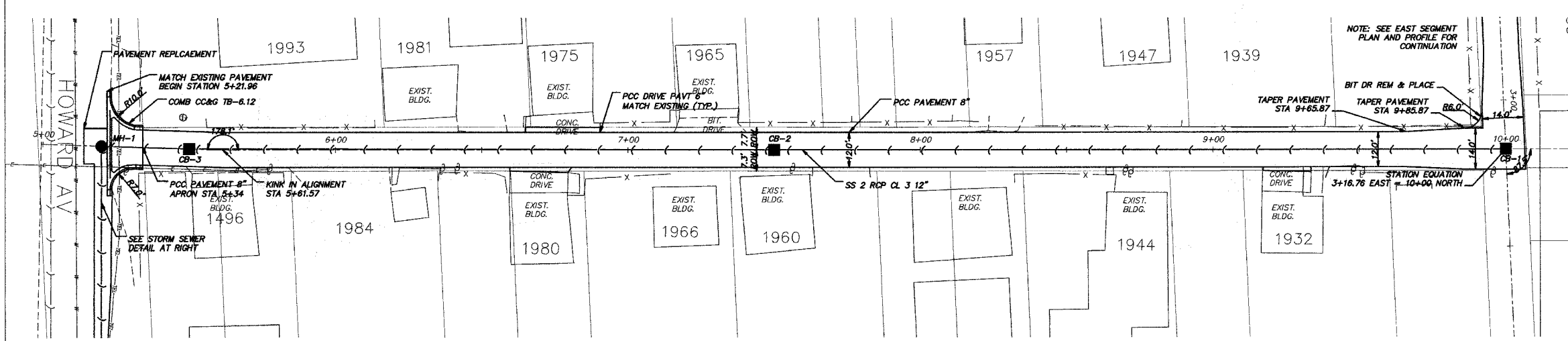


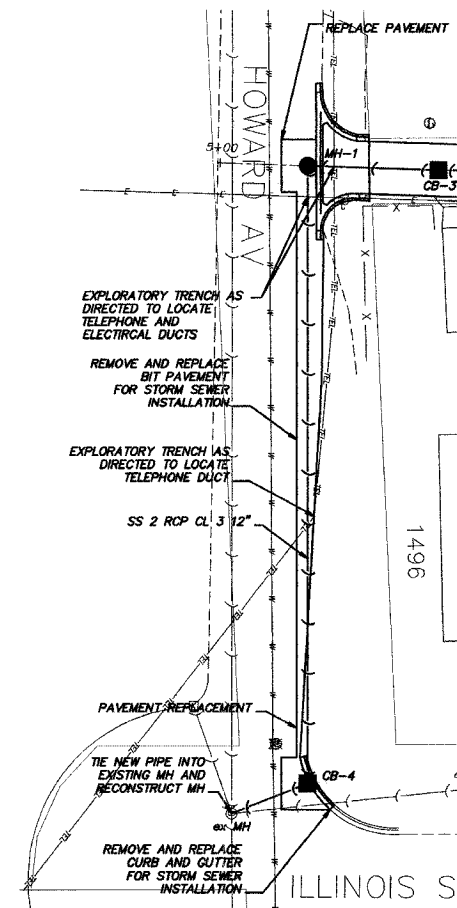
F.A. RTE.	SECTION	COUNTY	TOTAL SHEETS	SHEET NO.
05-00194-00-RP		COOK	58	25
STA. TO STA.		ILLINOIS FED. AID PROJECT		



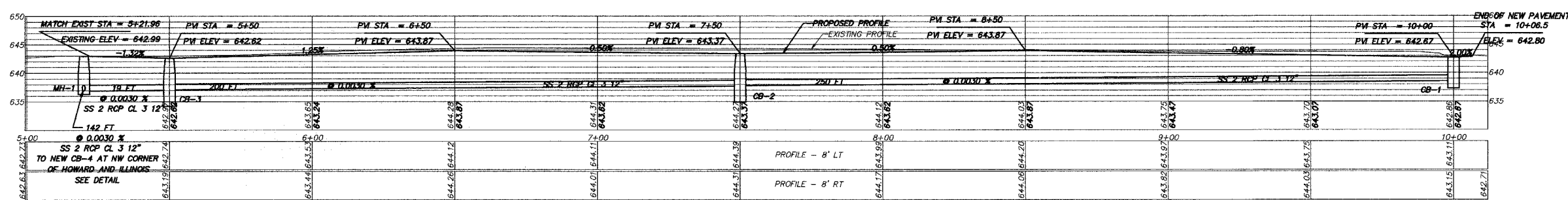
EXISTING



PROPOSED



STORM SEWER DETAIL



PROPOSED STRUCTURE DATA:

ex MH TY A 5 FT DIA ROUND FRAME CLOSED LID STA-5+07 142-R (IN PAVEMENT AT HOWARD AND ILLINOIS) RIM-642.63 INV.-636.25 (N) TIE NEW PIPE INTO EXISTING MH AND RECONSTRUCT MH	CB-4 CB TY A 4 FT DIA ROUND FRAME OPEN LID STA-5+25 142-R (NW CORNER OF HOWARD AND ILLINOIS) RIM-642.15 INV.-636.40 PIPE INV.-636.30 PIPE	MH-1 MH TY A 4 FT DIA ROUND FRAME CLOSED LID STA-5+20 RIM-642.95 INV.-636.93 PIPE INV.-636.83 PIPE	CB-3 CB TY C 2 FT DIA ROUND FRAME OPEN LID STA-7+50 RIM-642.62 INV.-637.12 PIPE INV.-637.02 PIPE	CB-2 CB TY C 2 FT DIA ROUND FRAME OPEN LID STA-7+50 RIM-643.37 INV.-637.92 PIPE INV.-637.72 PIPE	CB-1 CB TY C 2 FT DIA ROUND FRAME OPEN LID STA-10+00 RIM-642.67 INV.-638.57 PIPE
---	---	---	---	---	--

REVISIONS	NAME	DATE

ILLINOIS DEPARTMENT OF TRANSPORTATION
 CITY OF DES PLAINES - ALLEY IMPROVEMENTS
 DEANE - ILLINOIS ALLEY
 DEANE TO HOWARD

PLAN AND PROFILE (NORTH SEGMENT)

STA 5+21.96 TO 10+06.5
 SCALE: VERT. 1" = 5'
 HORIZ. 1" = 20'
 DATE 2-17-06

DRAWN BY BLS
 CHECKED BY AJD

PLOT DATE = 2/14/2006 3:08:57 PM
 FILE NAME = W:\ENGINEERING\LAND PROJECTS\2005\050305-183 ALLEY.DWG 050305-183 ALLEY.DWG
 PLOT SCALE = 1" = 20'
 USER NAME = JDOULDES