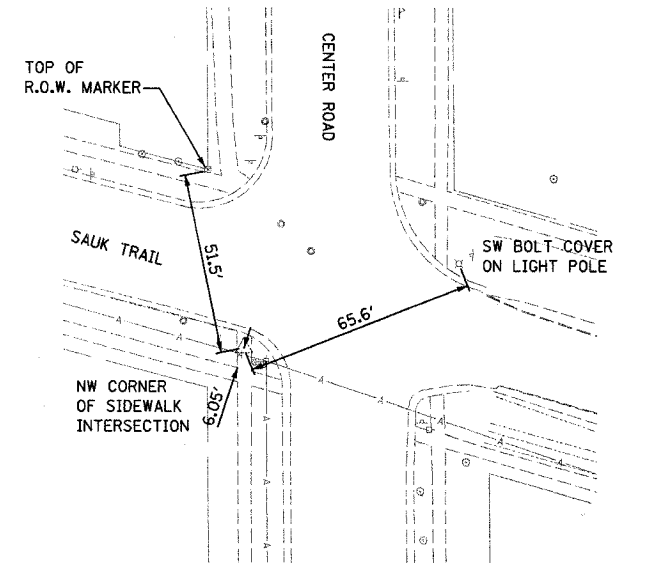
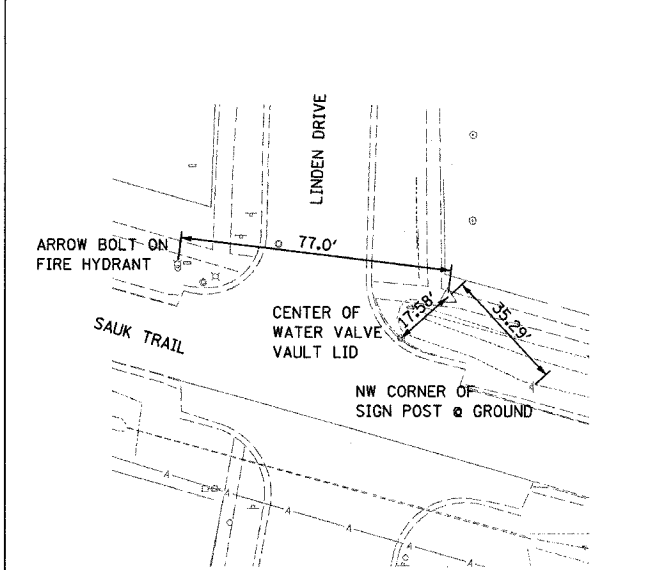


F.A. RTE.	SECTION	COUNTY	TOTAL SHEETS	SHEET NO.
3753	04-00037-00-WR	WILL	92	12
STA.	TO STA.			
FED. ROAD DIST. NO.	ILLINOIS	FED. AID PROJECT	83858	

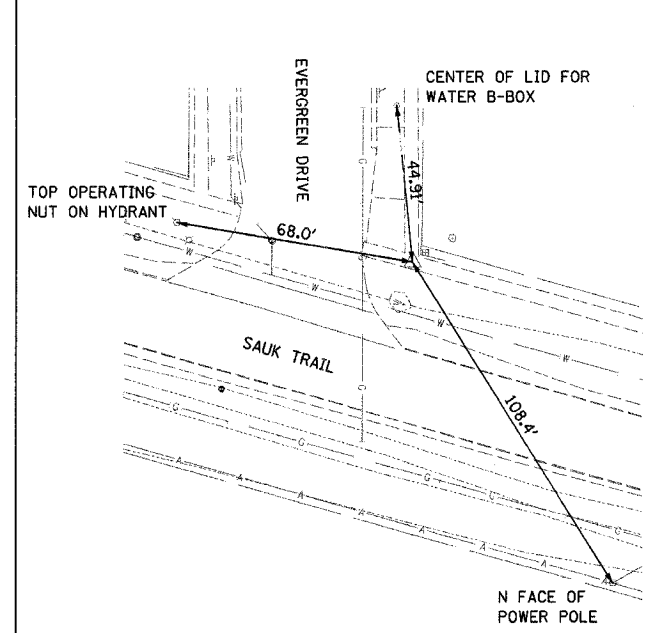
**CP 30**  
 CHISELED "X" IN SIDEWALK  
 NORTHING: 1759259.5819  
 EASTING: 1117073.5989  
 ELEV.= 764.74



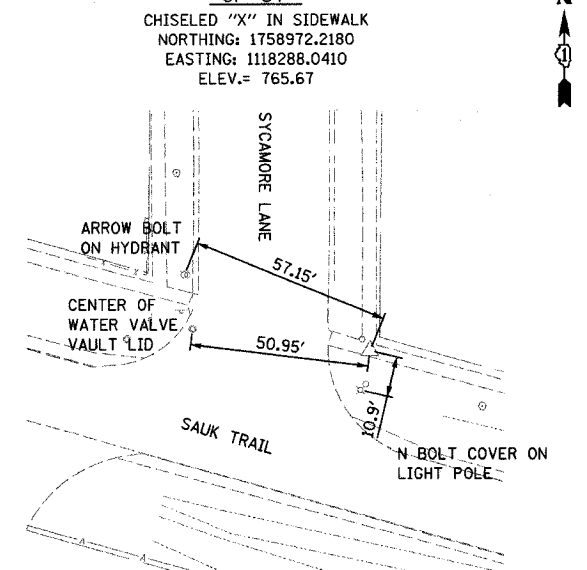
**CP 33**  
 CHISELED "X" IN SIDEWALK  
 NORTHING: 1759189.3250  
 EASTING: 1117515.228  
 ELEV.= 759.82



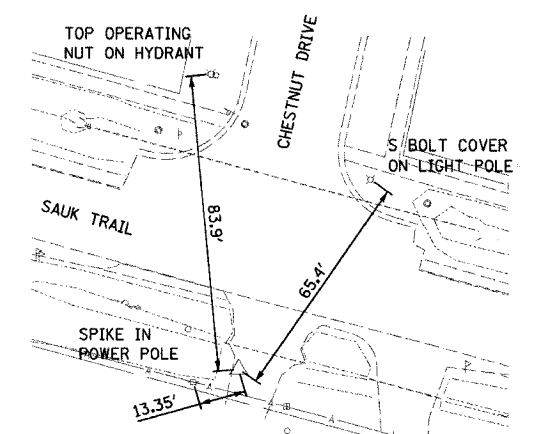
**CP 35**  
 CHISELED "X" IN SIDEWALK  
 NORTHING: 1759075.0846  
 EASTING: 1117921.1602  
 ELEV.= 763.96



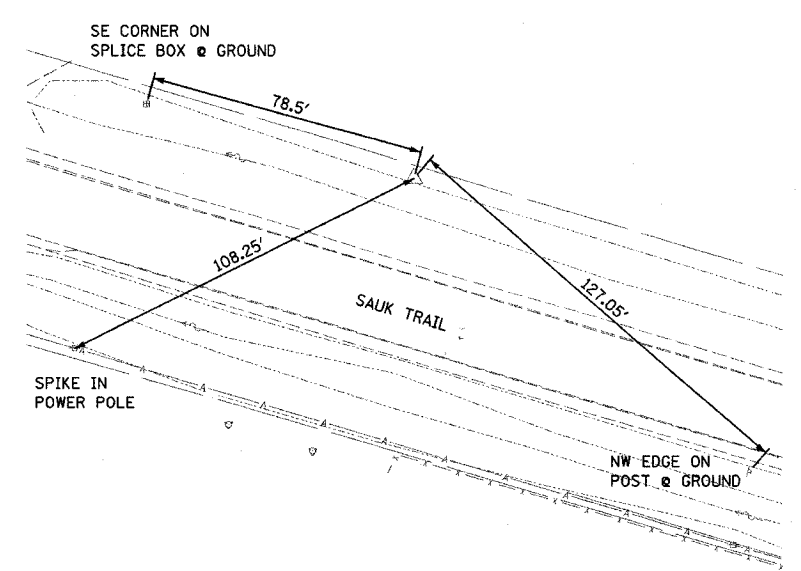
**CP 37**  
 CHISELED "X" IN SIDEWALK  
 NORTHING: 1758972.2180  
 EASTING: 1118288.0410  
 ELEV.= 765.67



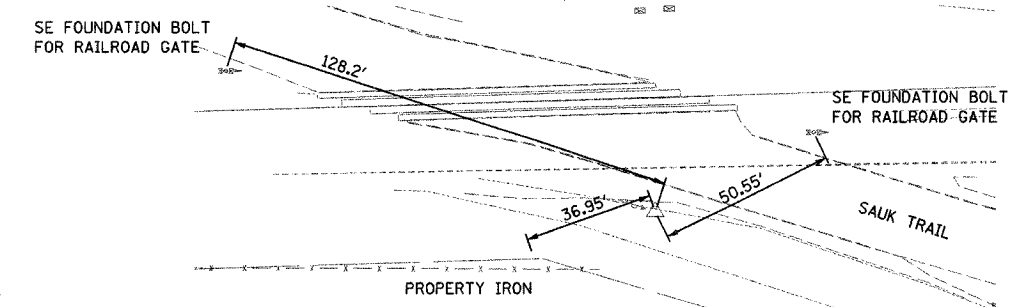
**CP 40**  
 PK NAIL IN DRIVEWAY  
 NORTHING: 1758715.0024  
 EASTING: 1118968.8108  
 ELEV.= 763.43



**CP 45**  
 REBAR WITH CAP  
 NORTHING: 1758406.5597  
 EASTING: 1120323.8389  
 ELEV.= 751.84



**CP 50**  
 REBAR WITH CAP  
 NORTHING: 1757989.8081  
 EASTING: 1121533.2197  
 ELEV.= 755.96



REVISIONS		ILLINOIS DEPARTMENT OF TRANSPORTATION
NAME	DATE	
		FAU 3753 SAUK TRAIL CONTROL POINT TIES AND BENCHMARKS

SCALE: VERT. N.T.S.  
 HORIZ. DATE 04/21/2006

DRAWN BY: JBH  
 CHECKED BY: JRM

TIME: 3:47:16 PM  
 DATE: 05/22/06  
 FILENAME: s:\06\021-484\021-003\urban\_addresses\lino\_norwalk.dgn