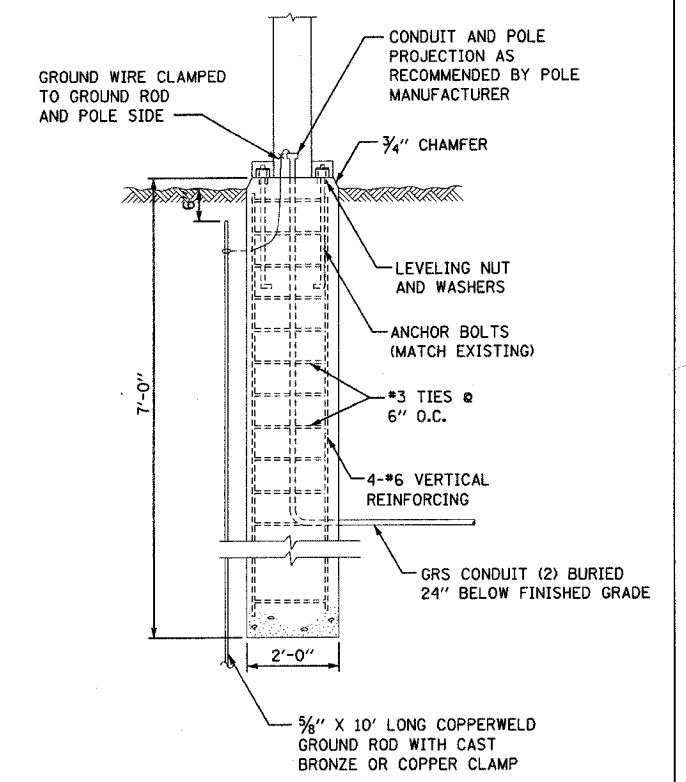
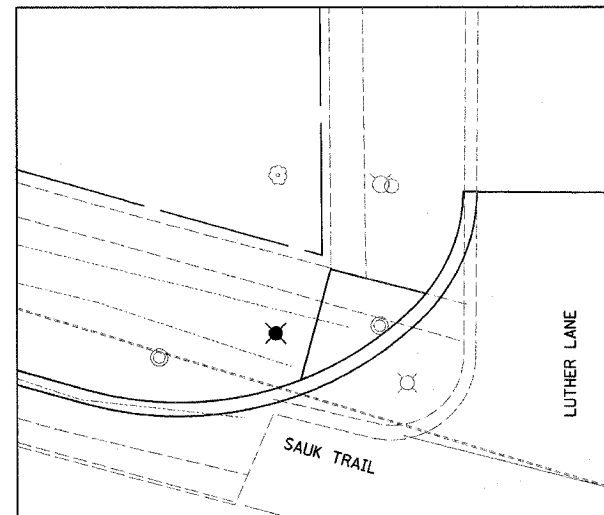
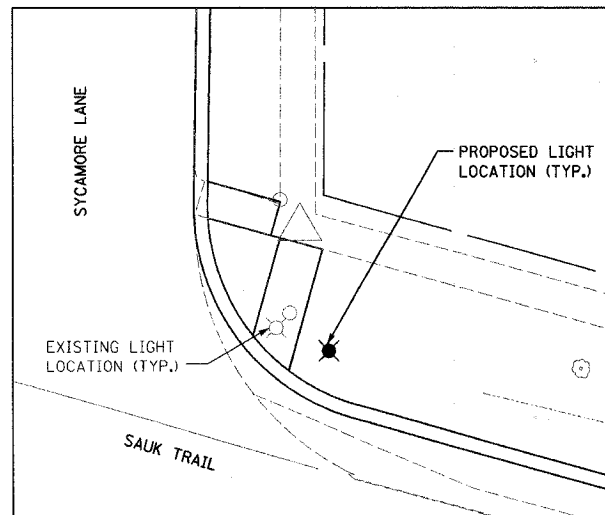
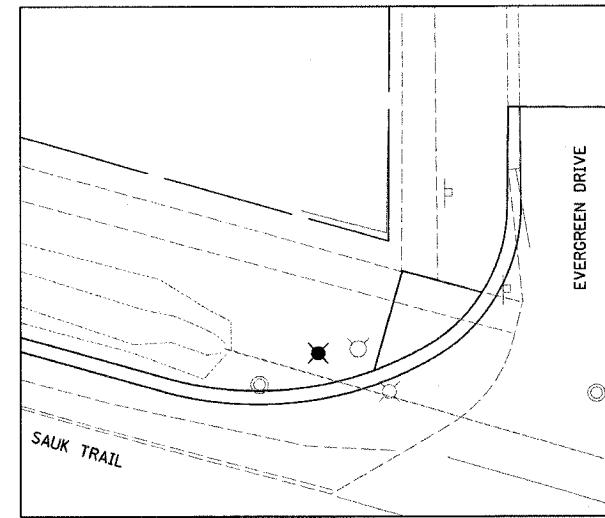
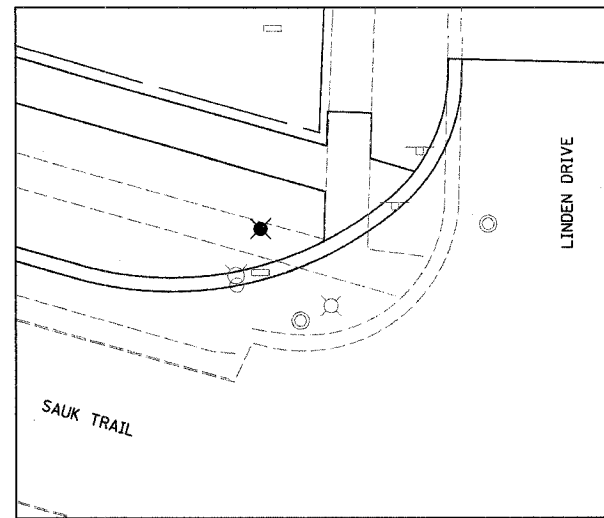
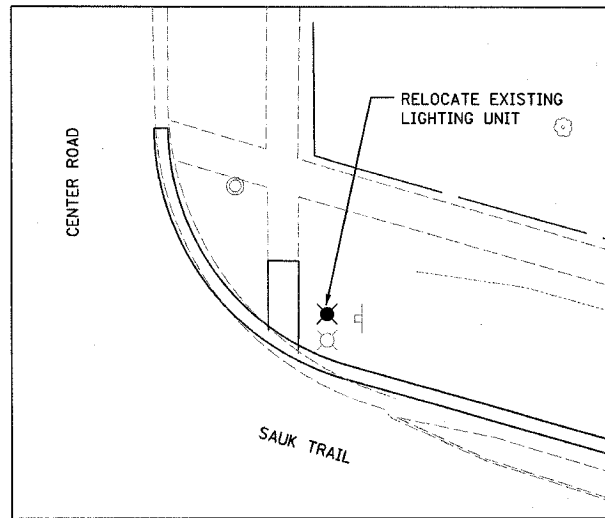


| | | | | |
|---------------------|----------------|---------------------------|--------------|-----------|
| F.A. RTE. | SECTION | COUNTY | TOTAL SHEETS | SHEET NO. |
| 3753 | 04-00037-00-WR | WILL | 92 | 49 |
| STA. | | TO STA. | | |
| FED. ROAD DIST. NO. | | ILLINOIS FED. AID PROJECT | | |

83858



- NOTES:**
1. TOP OF BASE TO BE 4" ABOVE TOP OF FUTURE CURB, TOP 12" TO BE FORMED.
 2. POLE SHALL BE MOUNTED 4'-0" BACK FROM EDGE OF PAVEMENT.

(X) LIGHT POLE BASE-ARCHITECTURAL



| | | | |
|--|-----------|------|---|
| | REVISIONS | | ILLINOIS DEPARTMENT OF TRANSPORTATION FAU 3753 SAUK TRAIL LIGHTING RELOCATION PLAN |
| | NAME | DATE | |
| | | | SCALE: VERT. N.T.S. HORIZ. N.T.S. DATE 04/21/2006 |
| | | | |