


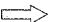

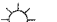
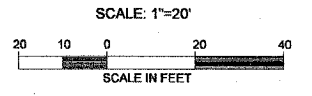
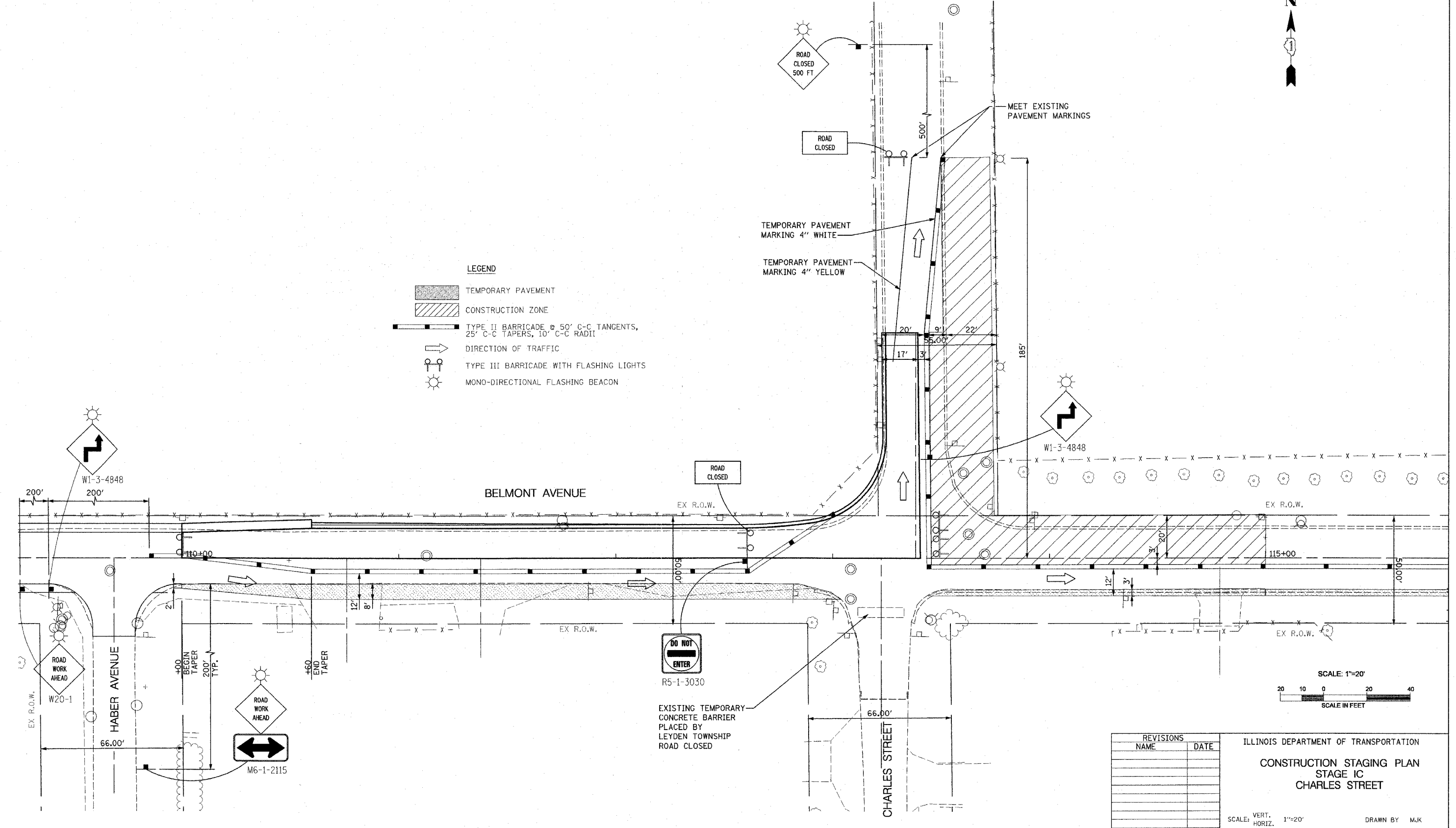


F.A.S. RTE.	SECTION	COUNTY	TOTAL SHEETS	SHEET NO.
1373	00-00058-00-RS	COOK	113	23
STA.		TO STA.		
FED. ROAD DIST. NO.		ILLINOIS	FED. AID PROJECT	
CONTRACT No: 83861				



- LEGEND**
-  TEMPORARY PAVEMENT
  -  CONSTRUCTION ZONE
  -  TYPE II BARRICADE @ 50' C-C TANGENTS, 25' C-C TAPERS, 10' C-C RADII
  -  DIRECTION OF TRAFFIC
  -  TYPE III BARRICADE WITH FLASHING LIGHTS
  -  MONO-DIRECTIONAL FLASHING BEACON



REVISIONS	
NAME	DATE

ILLINOIS DEPARTMENT OF TRANSPORTATION  
**CONSTRUCTION STAGING PLAN**  
**STAGE IC**  
**CHARLES STREET**

SCALE: VERT. 1"=20"  
 HORIZ. 1"=20"  
 DATE 4/6/06  
 DRAWN BY MJK  
 CHECKED BY BDC

P:\14300\plans\sheets\F14300csp12102.dgn  
 5/24/2006  
 5:20:42 PM