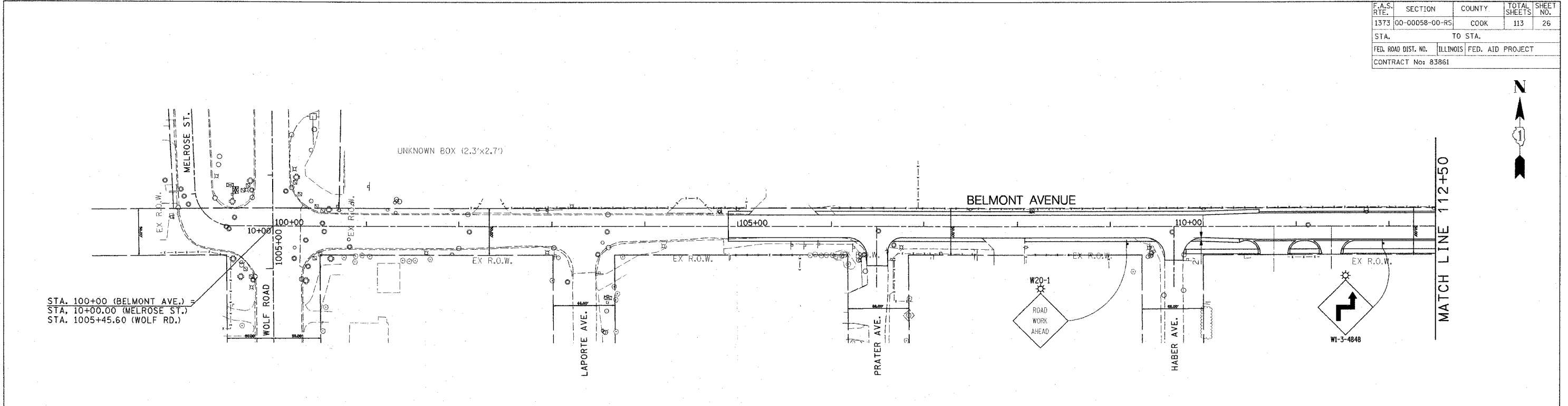
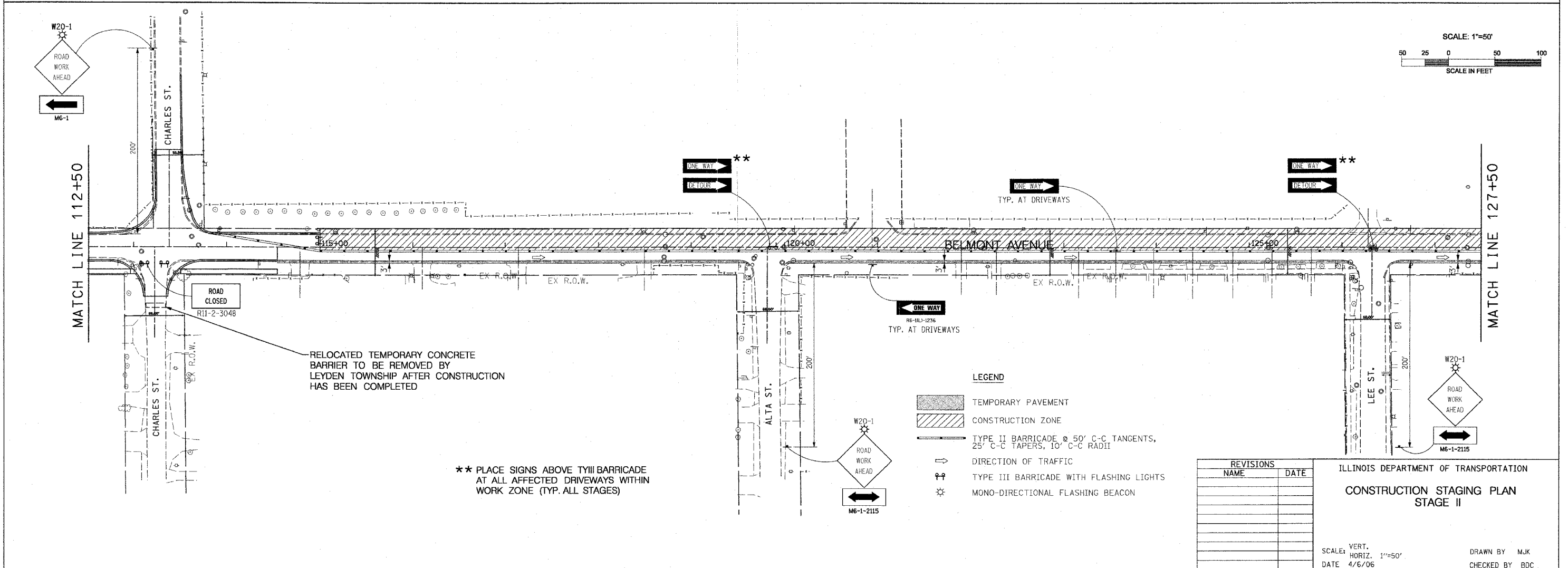
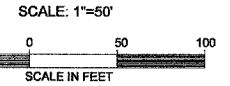


|                     |                |                  |              |           |
|---------------------|----------------|------------------|--------------|-----------|
| F.A.S. RTE.         | SECTION        | COUNTY           | TOTAL SHEETS | SHEET NO. |
| 1373                | 00-00058-00-RS | COOK             | 113          | 26        |
| STA.                | TO STA.        |                  |              |           |
| FED. ROAD DIST. NO. | ILLINOIS       | FED. AID PROJECT |              |           |
| CONTRACT No: 83961  |                |                  |              |           |



STA. 100+00 (BELMONT AVE.)  
 STA. 10+00.00 (MELROSE ST.)  
 STA. 1005+45.60 (WOLF RD.)



RELOCATED TEMPORARY CONCRETE BARRIER TO BE REMOVED BY LEYDEN TOWNSHIP AFTER CONSTRUCTION HAS BEEN COMPLETED

\*\* PLACE SIGNS ABOVE TYIII BARRICADE AT ALL AFFECTED DRIVEWAYS WITHIN WORK ZONE (TYP. ALL STAGES)

- LEGEND**
- TEMPORARY PAVEMENT
  - CONSTRUCTION ZONE
  - TYPE II BARRICADE @ 50' C-C TANGENTS, 25' C-C TAPERS, 10' C-C RADII
  - DIRECTION OF TRAFFIC
  - TYPE III BARRICADE WITH FLASHING LIGHTS
  - MONO-DIRECTIONAL FLASHING BEACON

| REVISIONS |      |
|-----------|------|
| NAME      | DATE |
|           |      |
|           |      |
|           |      |
|           |      |
|           |      |
|           |      |
|           |      |
|           |      |
|           |      |
|           |      |

ILLINOIS DEPARTMENT OF TRANSPORTATION  
**CONSTRUCTION STAGING PLAN**  
 STAGE II

SCALE: VERT. 1"=50'  
 HORIZ. 1"=50'  
 DATE 4/6/06

DRAWN BY MJK  
 CHECKED BY BDC

P:\14300\plans\sheetus\F14300esp10101.dgn  
 3/24/2006  
 5:20:57 PM