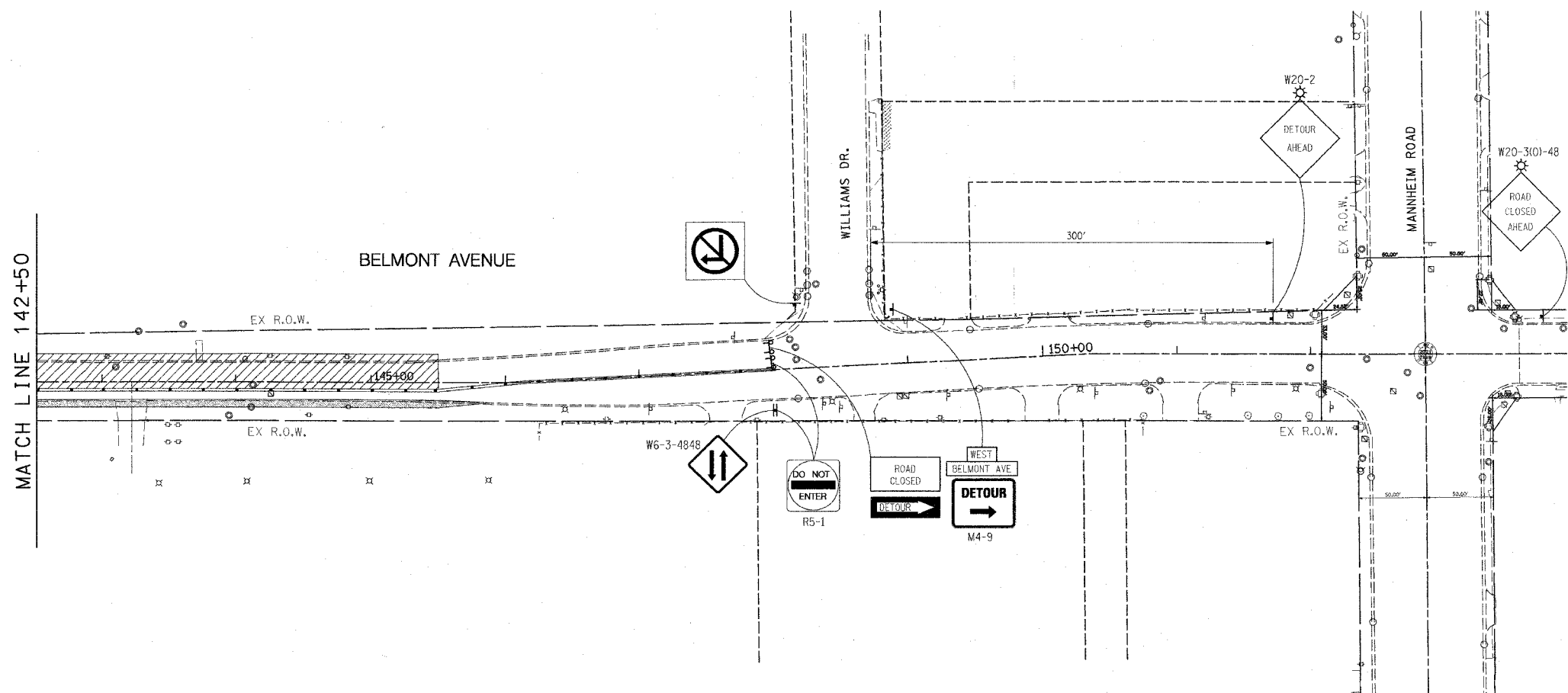
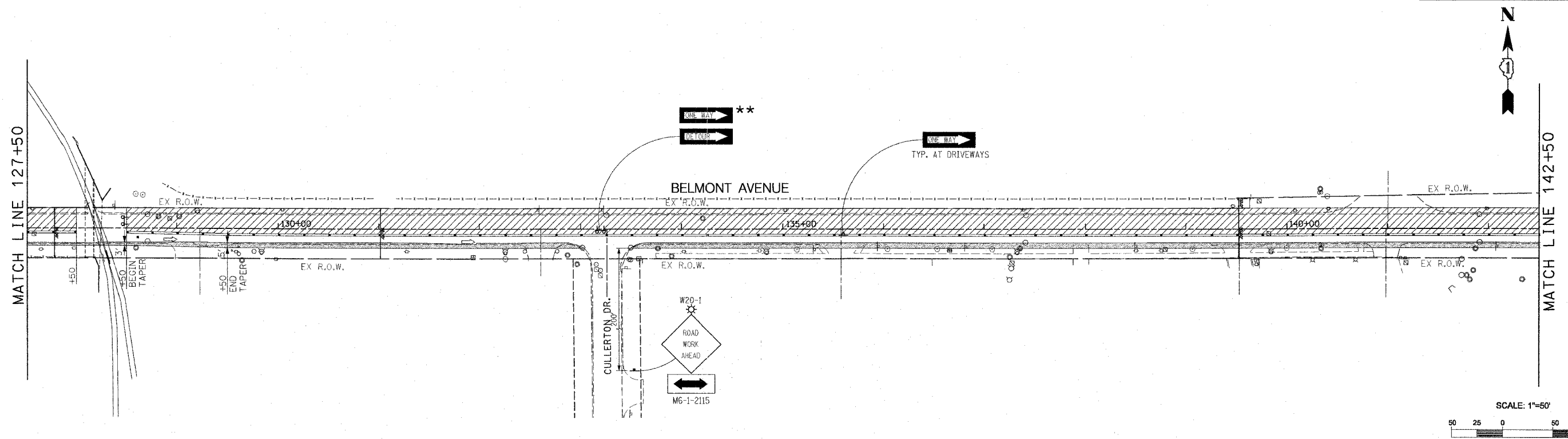


F.A.S. RTE.	SECTION	COUNTY	TOTAL SHEETS	SHEET NO.
1373	00-00058-00-RS	COOK	113	27
STA.		TO STA.		
FED. ROAD DIST. NO.		ILLINOIS	FED. AID PROJECT	
CONTRACT No: 83861				



- LEGEND**
- TEMPORARY PAVEMENT
 - CONSTRUCTION ZONE
 - TYPE II BARRICADE @ 50' C-C TANGENTS, 25' C-C TAPERS, 10' C-C RADII
 - DIRECTION OF TRAFFIC
 - TYPE III BARRICADE WITH FLASHING LIGHTS
 - MONO-DIRECTIONAL FLASHING BEACON

** PLACE SIGNS ABOVE TYPE III BARRICADE AT ALL AFFECTED DRIVEWAYS WITHIN WORK ZONE (TYP. ALL STAGES)

REVISIONS NAME	DATE

ILLINOIS DEPARTMENT OF TRANSPORTATION
CONSTRUCTION STAGING PLAN
 STAGE II

SCALE: VERT. 1"=50'
 HORIZ. 1"=50'
 DATE 4/6/06

DRAWN BY MJK
 CHECKED BY BDC

P:\14300\plans\sheet\14300csp10102.dgn
 5/24/2006
 5:21:02 PM