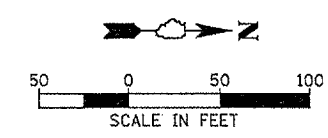
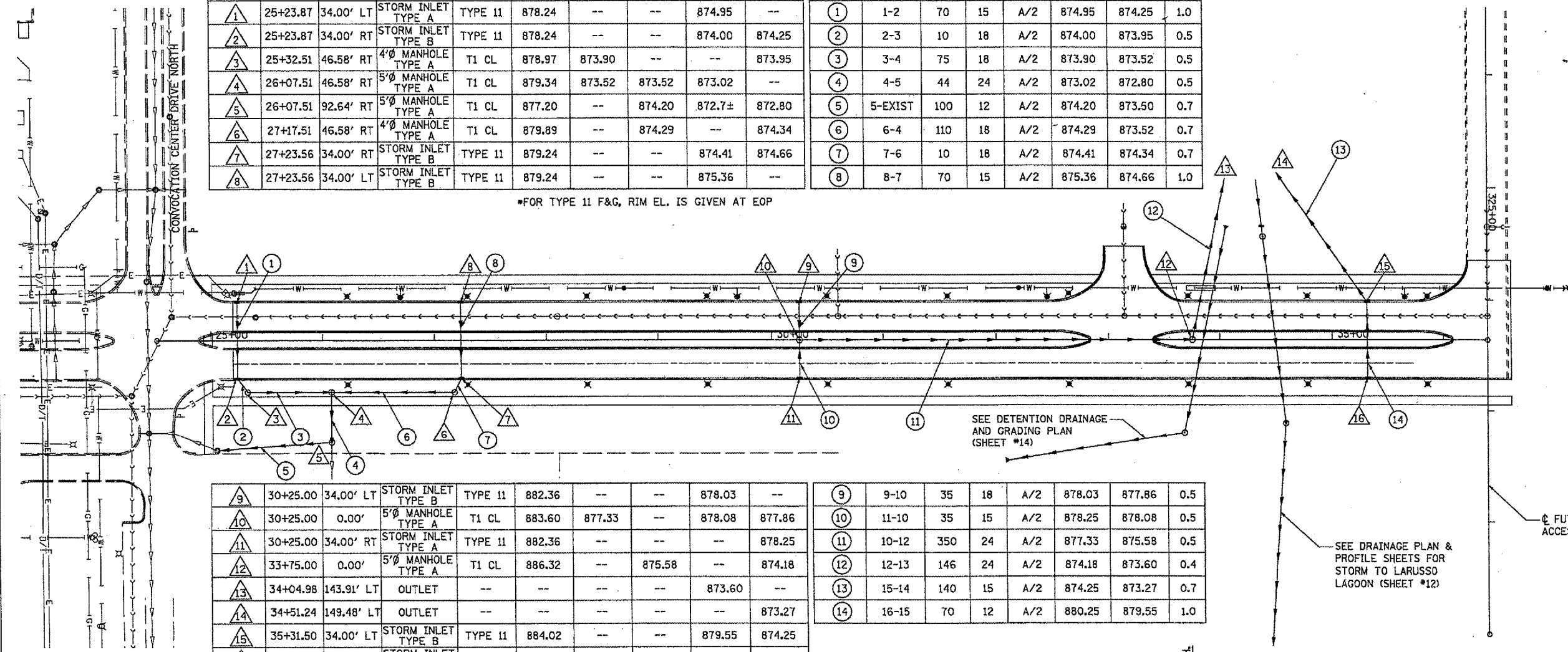


F.A. RTE.	SECTION	COUNTY	TOTAL SHEETS	SHEET NO.
	05-00001-01-PV	DEKALB	38	11
STA. 24+51.83		TO STA. 36+33.39		
C# 87319 ILLINOIS FED. AID PROJECT				

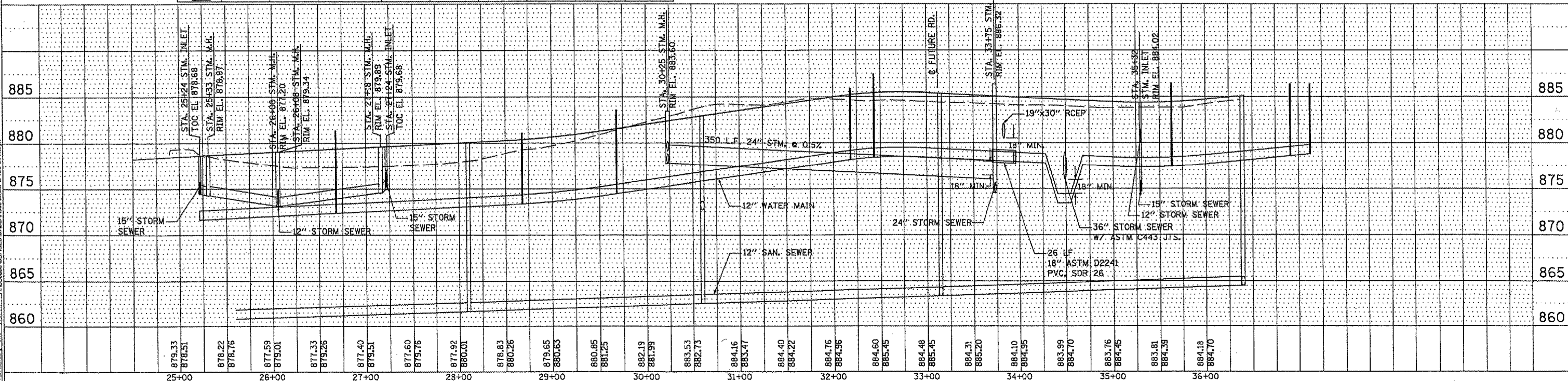


STR. NO.	STATION	OFFSET	TYPE	F & G	*RIM EL.	INV. N	INV. S	INV. E	INV. W	PIPE NO.	U/S-D/S	LENGTH (FT)	SIZE (INCH)	CLASS/TYPE	U/S INV.	D/S INV.	SLOPE (%)
1	25+23.87	34.00' LT	STORM INLET TYPE A	TYPE 11	878.24	--	--	874.95	--	1	1-2	70	15	A/2	874.95	874.25	1.0
2	25+23.87	34.00' RT	STORM INLET TYPE B	TYPE 11	878.24	--	--	874.00	874.25	2	2-3	10	18	A/2	874.00	873.95	0.5
3	25+32.51	46.58' RT	4'Ø MANHOLE TYPE A	T1 CL	878.97	873.90	--	--	873.95	3	3-4	75	18	A/2	873.90	873.52	0.5
4	26+07.51	46.58' RT	5'Ø MANHOLE TYPE A	T1 CL	879.34	873.52	873.52	873.02	--	4	4-5	44	24	A/2	873.02	872.80	0.5
5	26+07.51	92.64' RT	5'Ø MANHOLE TYPE A	T1 CL	877.20	--	874.20	872.7±	872.80	5	5-EXIST	100	12	A/2	874.20	873.50	0.7
6	27+17.51	46.58' RT	4'Ø MANHOLE TYPE A	T1 CL	879.89	--	874.29	--	874.34	6	6-4	110	18	A/2	874.29	873.52	0.7
7	27+23.56	34.00' RT	STORM INLET TYPE B	TYPE 11	879.24	--	--	874.41	874.66	7	7-6	10	18	A/2	874.41	874.34	0.7
8	27+23.56	34.00' LT	STORM INLET TYPE B	TYPE 11	879.24	--	--	875.36	--	8	8-7	70	15	A/2	875.36	874.66	1.0

\*FOR TYPE 11 F&G, RIM EL. IS GIVEN AT EOP



9	30+25.00	34.00' LT	STORM INLET TYPE B	TYPE 11	882.36	--	--	878.03	--	9	9-10	35	18	A/2	878.03	877.86	0.5
10	30+25.00	0.00'	5'Ø MANHOLE TYPE A	T1 CL	883.60	877.33	--	878.08	877.86	10	11-10	35	15	A/2	878.25	878.08	0.5
11	30+25.00	34.00' RT	STORM INLET TYPE A	TYPE 11	882.36	--	--	--	878.25	11	10-12	350	24	A/2	877.33	875.58	0.5
12	33+75.00	0.00'	5'Ø MANHOLE TYPE A	T1 CL	886.32	--	875.58	--	874.18	12	12-13	146	24	A/2	874.18	873.60	0.4
13	34+04.98	143.91' LT	OUTLET	--	--	--	--	873.60	--	13	15-14	140	15	A/2	874.25	873.27	0.7
14	34+51.24	149.48' LT	OUTLET	--	--	--	--	--	873.27	14	16-15	70	12	A/2	880.25	879.55	1.0
15	35+31.50	34.00' LT	STORM INLET TYPE B	TYPE 11	884.02	--	--	879.55	874.25								
16	35+31.50	34.00' RT	STORM INLET TYPE A	TYPE 11	884.02	--	--	--	880.25								



LAYOUT: MW 02/23/06  
 DRAWN: MW 05/05/06  
 REVIEWED: CRC 10/17/06