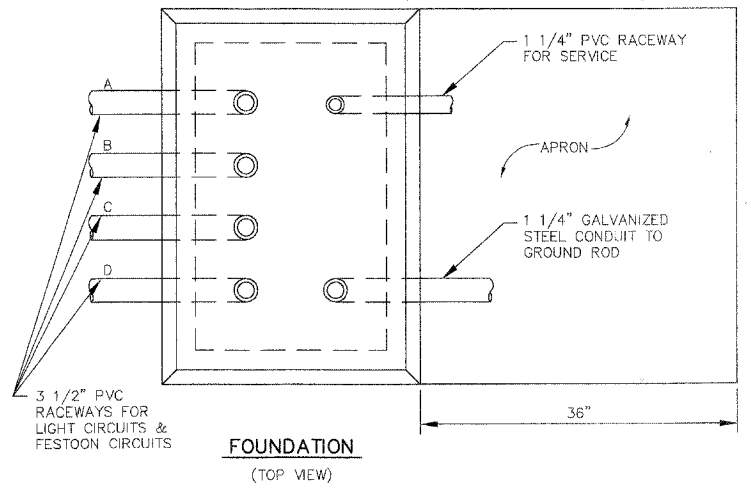
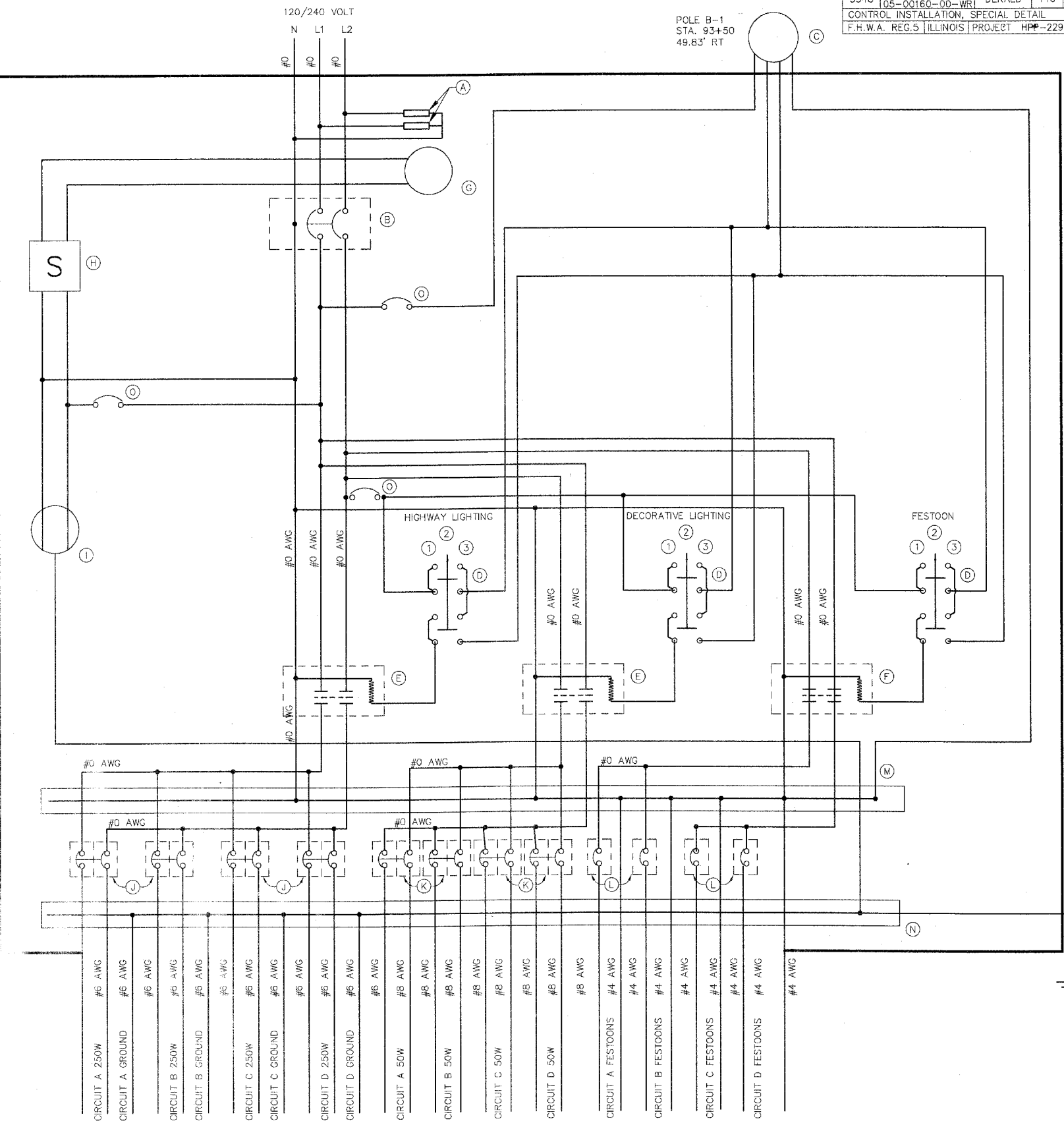
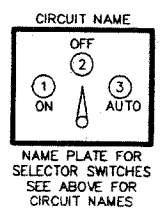


NOTE: CONCRETE FOUNDATION SHALL CONFORM TO STANDARD 878001 FOR TYPE D FOUNDATION.



**ITEMS**

- (A) LIGHTNING ARRESTERS
- (B) MAIN CIRCUIT BREAKER - 150 AMP, TWO-POLE
- (C) PHOTOCELL LOCATED ON POLE B-1
- (D) SELECTOR SWITCH - OFF / AUTOMATIC / MANUAL
- (E) CONTROL CONTACTOR, 30 AMP, TWO POLE
- (F) CONTROL CONTACTOR, 100 AMP, TWO POLE
- (G) CABINET LIGHT
- (H) CABINET LIGHT SWITCH
- (I) DUPLEX RECEPTACLE
- (J) BRANCH CIRCUIT BREAKER, 15 AMP, TWO POLE
- (K) BRANCH CIRCUIT BREAKER, 10 AMP, TWO POLE
- (L) BRANCH CIRCUIT BREAKER, 30 AMP, SINGLE POLE
- (M) NEUTRAL BUS BAR - 6 CONNECTORS FOR #2 WIRE, 8 CONNECTORS FOR #6 WIRE
- (N) GROUND BUS BAR - 6 CONNECTORS FOR #6 WIRE, 1 CONNECTOR FOR #2 WIRE
- (O) CIRCUIT BREAKER, 20 AMP, SINGLE POLE



NOTE: 1. ALL CONTROLLER WIRING SHALL BE STRANDED COPPER. ALL CONTROLLER WIRING SHALL BE #12 AWG UNLESS OTHERWISE NOTED.  
2. NEUTRAL AND GROUND TO BE BONDED TOGETHER AT THE SERVICE DISCONNECT.

\* Revised  
7/19/06

DIVISION OF TRANSPORTATION	
CONTROL INSTALLATION, SPECIAL	
ANNIE GLIDDEN RD	
NAME	DATE
REVISIONS	
SCALE: NONE	DRAWN BY: JMH
DATE: 5-26-04	CHECKED BY: DAY