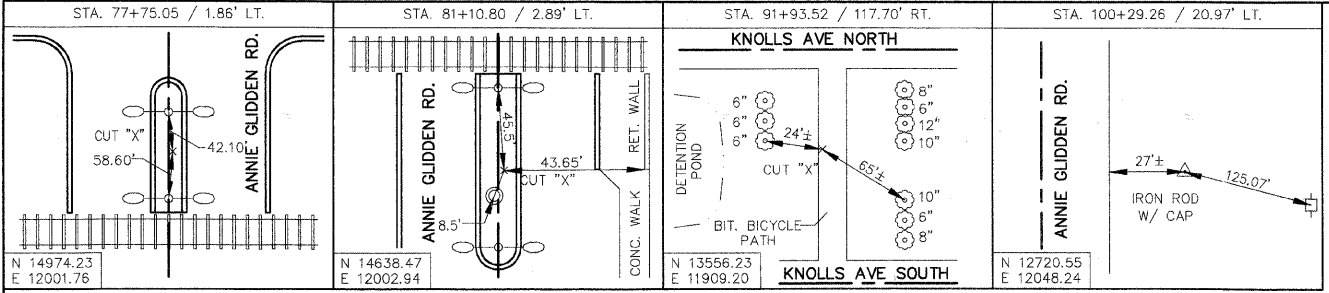


F.A. U. ROUTE	CONTRACT NO. 87330	COUNTY DEKALB	TOTAL SHEETS 140	SHTS. NO. 11
5348	STATE SECTION 05-00160-00-WR	DEKALB	140	11
ALIGNMENT, TIES, AND BENCHMARKS				
F.H.W.A. REG 5 ILLINOIS PROJECT HPP-2295(001)				



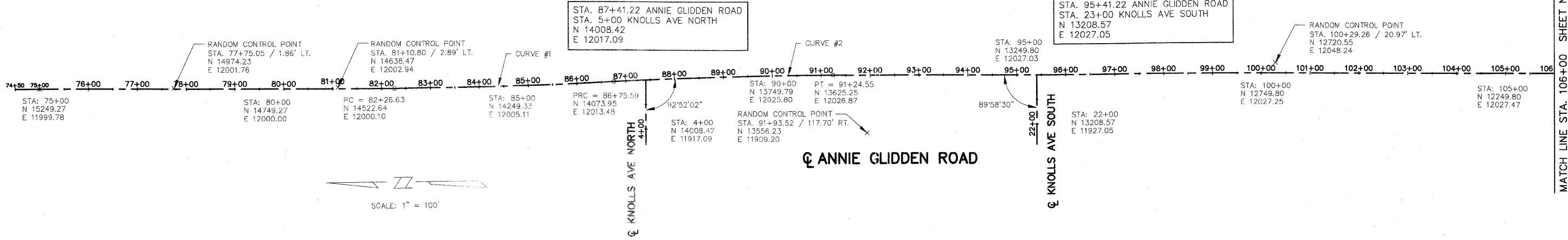
RANDOM CONTROL POINTS

**PROPOSED ANNIE GLIDDEN ROAD
 CENTER LINE CURVE DATA - CURVE #1**

P.I. = 84+51.11
 $\Delta = 02^\circ 22' 03''$
 $D = 00^\circ 45' 00''$
 $R = 7639.00'$
 $T = 224.55'$
 $L = 448.96'$
 $E = 3.30'$
 P.C. STA. 82+26.63
 P.R.C. STA. 86+75.59

**PROPOSED ANNIE GLIDDEN ROAD
 CENTER LINE CURVE DATA - CURVE #2**

P.I. = 89+00.07
 $\Delta = 03^\circ 22' 03''$
 $D = 00^\circ 45' 00''$
 $R = 7639.00'$
 $T = 224.55'$
 $L = 448.96'$
 $E = 3.30'$
 P.R.C. STA. 86+75.59
 P.T. STA. 91+24.55



SCALE: 1" = 100'

BENCHMARKS:

- SOUTHEAST BOLT ON FIRE HYDRANT AT THE SOUTHWEST CORNER OF KNOLLS AVENUE SOUTH AND ANNIE GLIDDEN ROAD. ELEVATION: 848.69
- RIVET ON THE CONCRETE WING WALL AT THE NORTHEAST CORNER OF TAYLOR STREET BRIDGE 0.3 MILES± EAST OF ANNIE GLIDDEN ROAD. ELEVATION: 851.32
- NORTHWEST BOLT ON FIRE HYDRANT AT THE SOUTHEAST CORNER OF DAVID AVENUE AND TAYLOR STREET. ELEVATION: 848.66
- NORTHWEST BOLT ON FIRE HYDRANT AT THE SOUTHEAST CORNER OF SHARON DRIVE AND TAYLOR STREET. ELEVATION: 850.48
- NORTHWEST BOLT ON FIRE HYDRANT AT THE SOUTHWEST CORNER OF ANNIE GLIDDEN ROAD AND TAYLOR STREET. ELEVATION: 852.22
- BOLT BY ARROW ON HYDRANT AT THE NORTHWEST CORNER OF HIGHPOINT DRIVE AND ANNIE GLIDDEN ROAD. ELEVATION: 876.74

MATCH LINE STA. 106+00 SHEET NO. 12