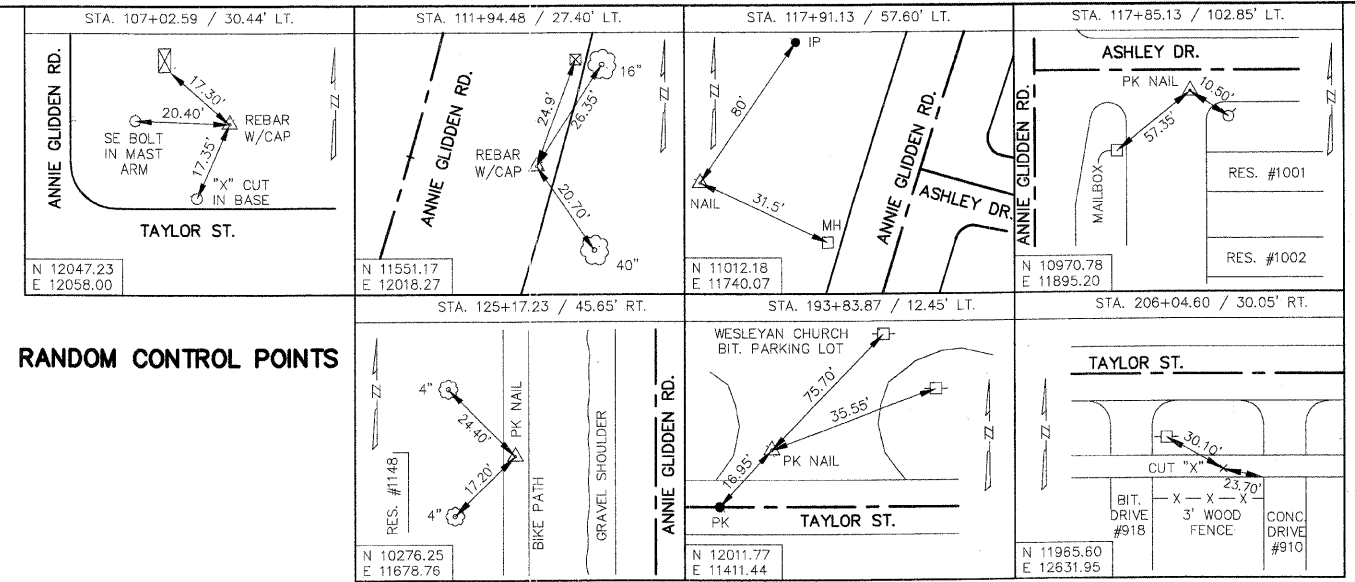


F.A. U. ROUTE	CONTRACT NO.	COUNTY	TOTAL SHEETS
5348	87330	DEKALB	140
STATE SECTION			12
05-00160-00-WR			
ALIGNMENT, TIES, AND BENCHMARKS			
F.H.W.A. REG.5 ILLINOIS PROJECT HPP-2295(001)			

STA. 203+20.15 TAYLOR STREET =  
 Q SHARON DRIVE  
 N 11997.57  
 E 12347.72

STA. 107+49.77 ANNIE GLIDDEN ROAD  
 STA. 200+00.00 TAYLOR STREET  
 N 1200.03  
 E 12027.58

STA. 191+21.55 S. MALTA ROAD =  
 Q QUAIL RUN  
 N 11999.01  
 E 11149.13



**RANDOM CONTROL POINTS**

**PROPOSED ANNIE GLIDDEN ROAD  
 CENTER LINE CURVE DATA - CURVE #4**

P.I. = 118+57.10  
 $\Delta = 19^\circ 43' 30''$   
 $D = 03^\circ 30' 00''$   
 $R = 1637.02'$   
 $T = 284.60'$   
 $L = 563.57'$   
 $E = 24.19'$   
 P.C. STA. 117+14.20  
 P.T. STA. 122+77.77

**PROPOSED ANNIE GLIDDEN ROAD  
 CENTER LINE CURVE DATA - CURVE #3**

P.I. = STA. 110+95.80  
 $\Delta = 19^\circ 40' 01''$   
 $D = 05^\circ 59' 58''$   
 $R = 955.00'$   
 $T = 165.53'$   
 $L = 327.81'$   
 $E = 14.24'$   
 P.C. STA. 109+31.89  
 P.T. STA. 112+59.70

**Q ANNIE GLIDDEN ROAD**

STA. 123+08.92 ANNIE GLIDDEN ROAD  
 Q GOLF COURT  
 N 10484.62  
 E 11724.11

STA. 123+11.03 ANNIE GLIDDEN ROAD  
 Q HIGHPOINTE DRIVE  
 N 10482.52  
 E 11724.11

SCALE: 1" = 100'

MATCH LINE STA. 190+50

MATCH LINE STA. 190+50

