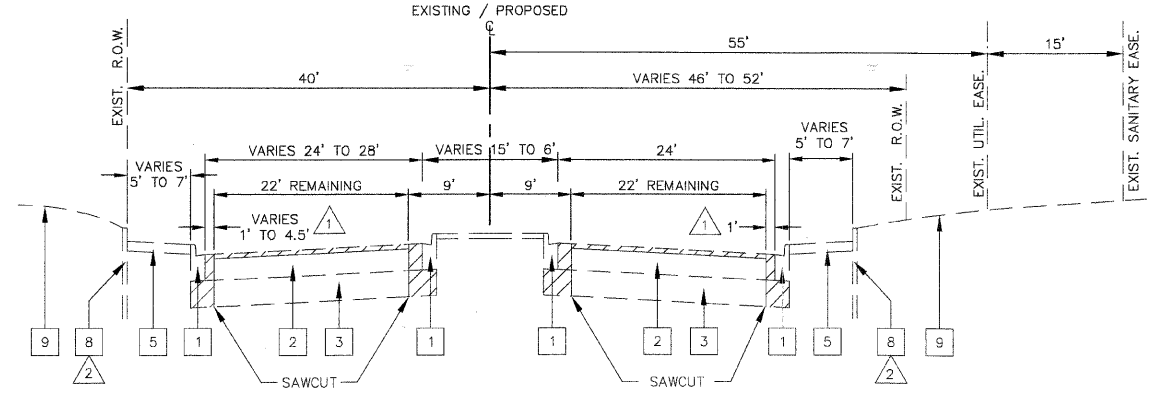


F.A.U. ROUTE	CONTRACT NO.	COUNTY	TOTAL SHEET SHTS.	SHTS. NO.
5348	87330	DEKALB	140	13
EXISTING TYPICAL SECTIONS				
F.H.W.A. REG. 5 ILLINOIS PROJECT HPP-2295(001)				

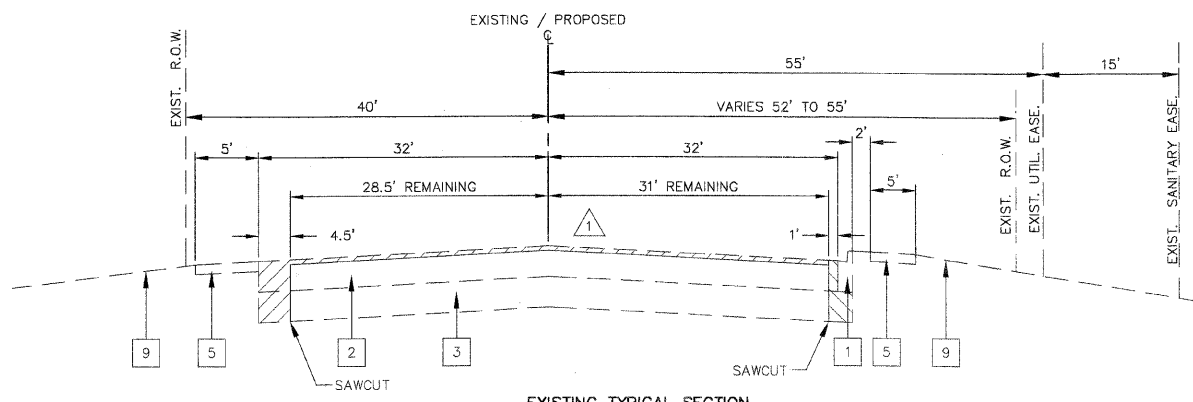
EXISTING TYPICAL SECTION LEGEND

- 1 EXISTING COMB. CONC. CURB & GUTTER, TYPE B-6.12
- 2 EXISTING BITUMINOUS PAVEMENT ANNIE GLIDDEN ROAD: 9" & VARIES S. MALTA RD./TAYLOR ST.: 8" & VARIES
- 3 EXISTING AGGREGATE SUBBASE, 6" & VARIES
- 4 (NOT USED)
- 5 EXISTING SIDEWALK
- 6 EXISTING BITUMINOUS CONCRETE SHOULDERS
- 7 EXISTING AGGREGATE SHOULDERS
- 8 EXISTING CONCRETE RETAINING WALL
- 9 EXISTING GROUND
- 10 EXISTING BITUMINOUS PATH

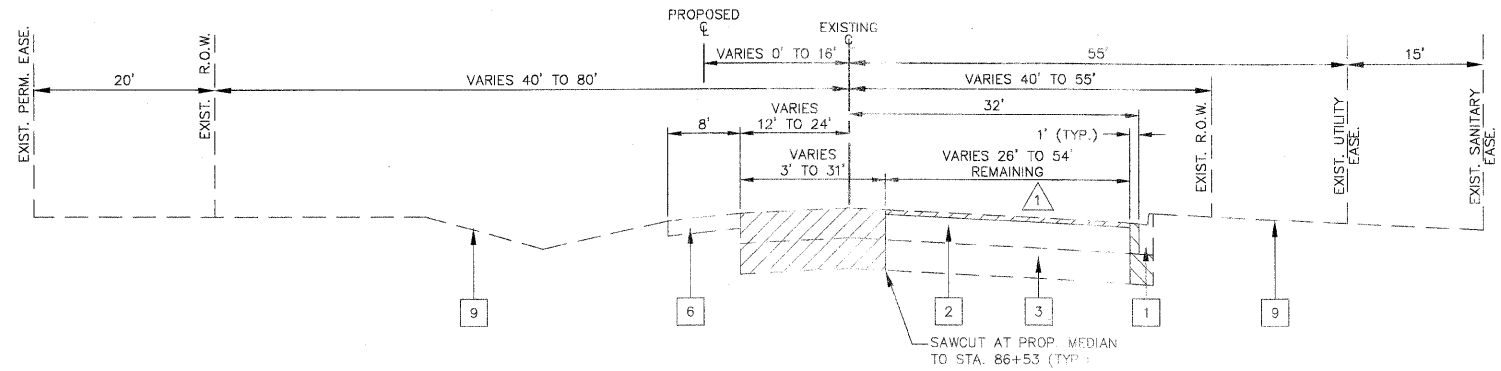
- NOTES:**
- 1 BITUMINOUS SURFACE REMOVAL STA. 81+15 TO STA. 83+70
 STA. 86+30 TO STA. 86+53 (RT)
 STA. 116+70 TO STA. 120+70 (RT)
 STA. 125+25 TO STA. 127+05 (RT)
 STA. 191+41 TO STA. 198+55.79
 STA. 204+70 TO STA. 208+59
 - 2 STA. 81+15 TO STA. 81+33
 - 3 EXISTING SUPERELEVATION (S.E.):
 STA. 108+88 TO STA. 112+78 MAX. S.E. = 3.65% (CURVE RT)
 STA. 117+14 TO STA. 121+49 MAX. S.E. = 4.63% (CURVE LT)
 - 4 STA. 201+50 TO STA. 208+59



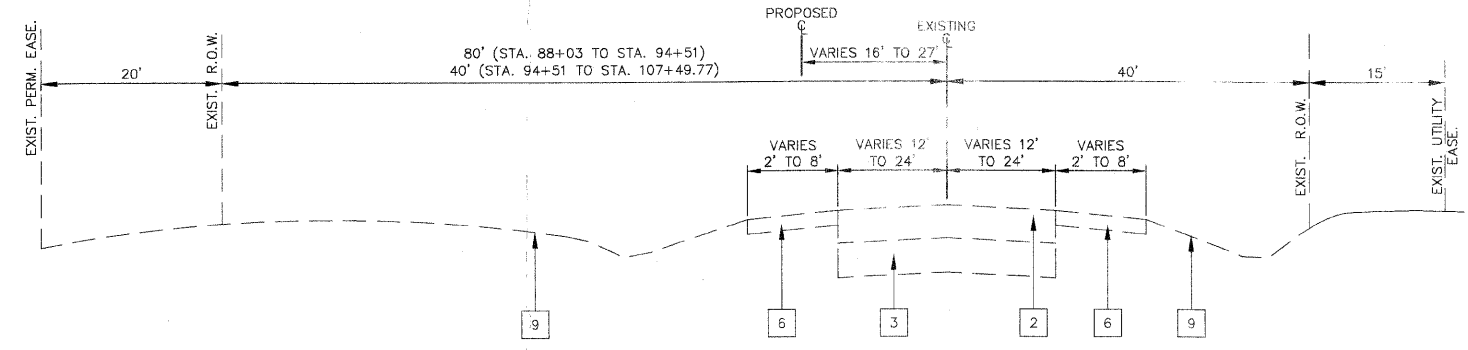
**EXISTING TYPICAL SECTION
 ANNIE GLIDDEN ROAD
 STA. 81+15 TO STA. 82+07**



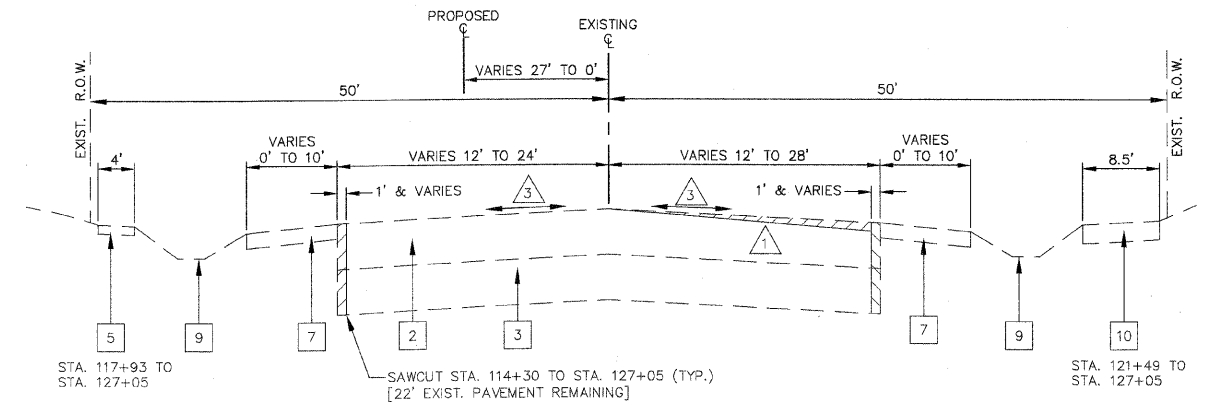
**EXISTING TYPICAL SECTION
 ANNIE GLIDDEN ROAD
 STA. 82+07 TO STA. 84+28**



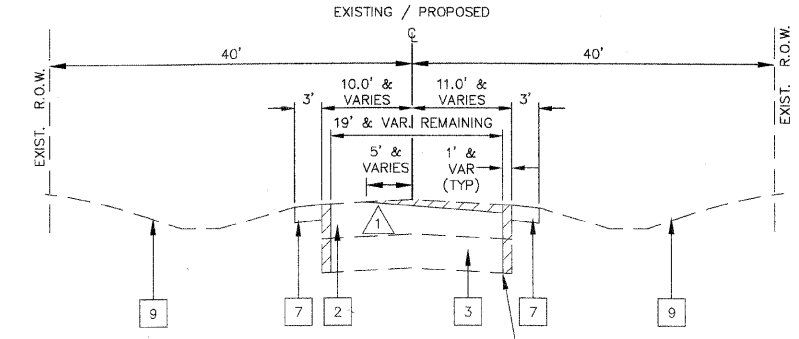
**EXISTING TYPICAL SECTION
 ANNIE GLIDDEN ROAD
 STA. 84+28 TO STA. 88+03**



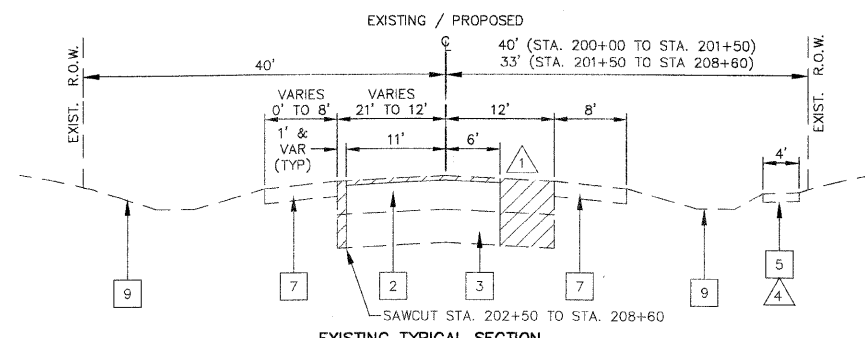
**EXISTING TYPICAL SECTION
 ANNIE GLIDDEN ROAD
 STA. 88+03 TO STA. 107+49.77**



**EXISTING TYPICAL SECTION
 ANNIE GLIDDEN ROAD
 STA. 107+49.77 TO STA. 127+05**



**EXISTING TYPICAL SECTION
 SOUTH MALTA ROAD
 STA. 191+41 TO STA. 200+00**



**EXISTING TYPICAL SECTION
 TAYLOR STREET
 STA. 200+00 TO STA. 208+59**