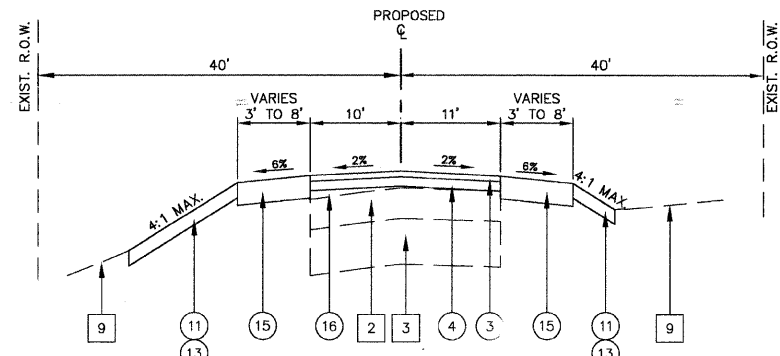
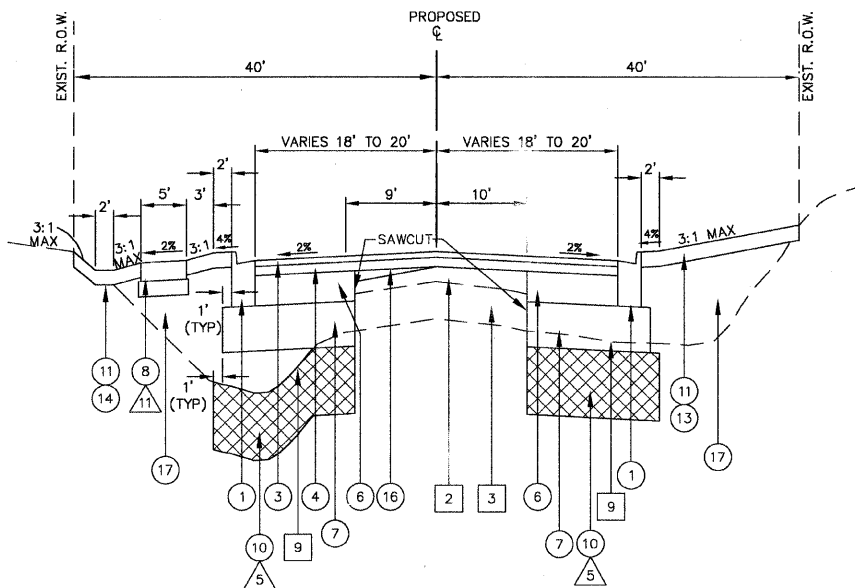


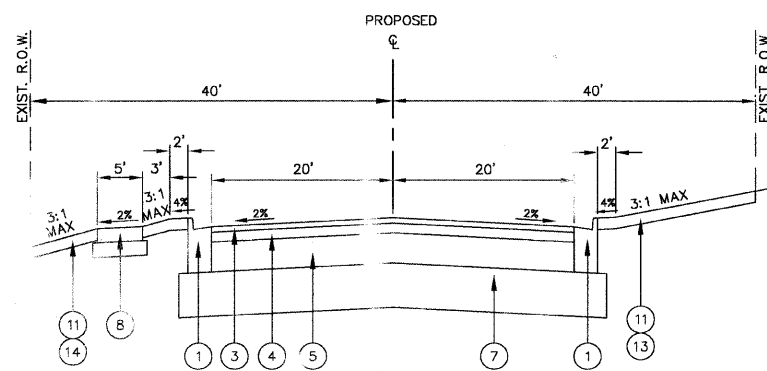
F.A.U. ROUTE	CONTRACT NO.	COUNTY	TOTAL SHEET
5348	87330	DEKALB	140
STATE SECTION			16
05-00160-00-WR			
PROPOSED TYPICAL SECTIONS			
F.H.W.A. REG.5 ILLINOIS PROJECT HPP-2295(001)			



PROPOSED TYPICAL SECTION
 SOUTH MALTA ROAD
 STA. 191+41 TO STA. 192+16



PROPOSED TYPICAL SECTION
 SOUTH MALTA ROAD
 STA. 192+16 TO STA. 198+55.79



PROPOSED TYPICAL SECTION
 SOUTH MALTA ROAD
 STA. 198+55.79 TO STA. 200+00

PAVEMENT DESIGN INFORMATION

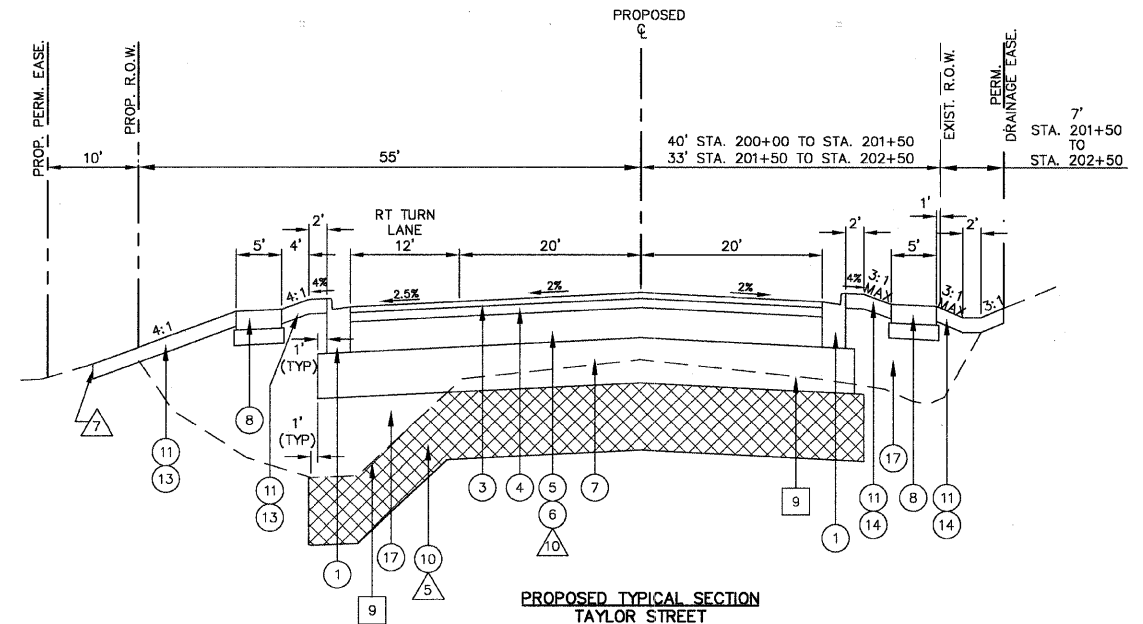
ANNIE GLIDDEN ROAD	SOUTH MALTA ROAD / TAYLOR STREET
CLASS I ROAD	CLASS II ROAD
2015 ADT 19150	2015 ADT 9560
STRUCTURAL DESIGN TRAFFIC	STRUCTURAL DESIGN TRAFFIC
PV 18385 (96%)	PV 9180 (96%)
SU 190 (1%)	SU 190 (2%)
MU 575 (3%)	MU 190 (2%)
PAVEMENT DESIGN	PAVEMENT DESIGN
SSR POOR	SSR POOR
TF 2.75	TF 0.96
AC 20 (PG 64-22)	AC 20 (PG 64-22)
AC MIX TEMP 78°F	AC MIX TEMP 78°F
MODULUS 600 KSI	MODULUS 600 KSI
AC MICROSTRAIN 76	AC MICROSTRAIN 108
PAVEMENT THICKNESS REQUIRED 11-3/4"	PAVEMENT THICKNESS REQUIRED 9-3/4"
PAVEMENT THICKNESS PROVIDED 12"	PAVEMENT THICKNESS PROVIDED 10"

NOTES:

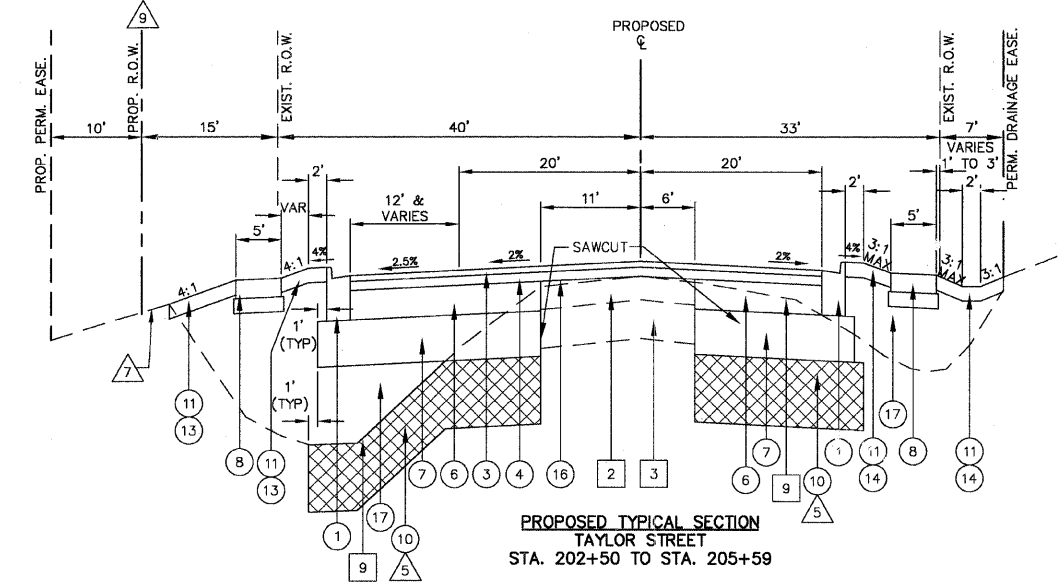
- 5 UNDERCUT AND PGES LIMITS
 STA. 81+15 TO STA. 105+00
 STA. 108+00 TO STA. 116+50
 STA. 122+50 TO STA. 128+50
 STA. 192+16 TO STA. 194+00
 STA. 200+00 TO STA. 204+50
 SEE SHEET 15 FOR UNDERCUT AND POROUS GRANULAR EMBANKMENT, SPECIAL DETAIL
- 7 SEE SHEET 31 FOR COMPENSATORY STORAGE BASIN GRADING PLAN
 ANNIE GLIDDEN ROAD STA. 98+70 TO STA. 107+00 (LT)
 TAYLOR STREET STA. 200+50 TO STA. 204+35 (RT)
- 9 PROP. ROW AND PROP. PERM. EASE. FROM STA. 200+00 TO STA. 204+35 (RT)
- 10 8" BIT. BASE COURSE STA. 200+00 TO STA. 201+55.50
 6" BIT. BASE COURSE STA. 201+55.50 TO STA. 202+50
- 11 STA. 193+54 TO STA. 198+55.79

PROPOSED TYPICAL SECTION ITEMS

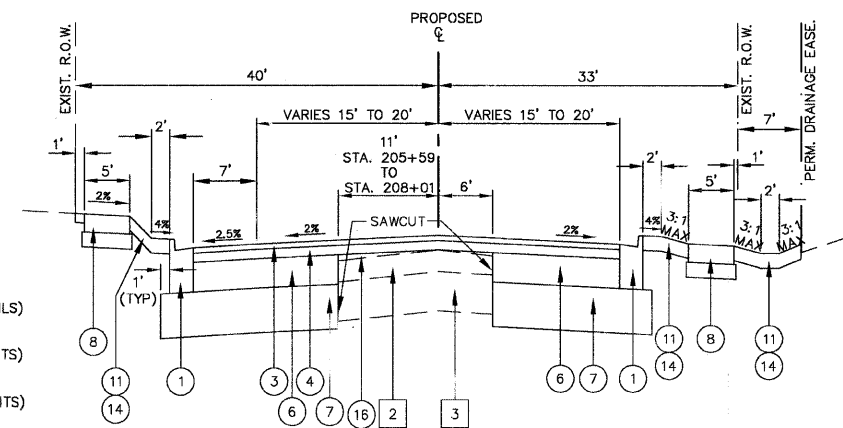
- | | | |
|---|---|--|
| # EXISTING ITEM TO REMAIN - SEE EXISTING TYPICAL SECTION LEGEND | 6 BITUMINOUS BASE COURSE, SUPERPAVE, 6" | 11 TOPSOIL PLACEMENT, 4" |
| 1 COMBINATION CONCRETE CURB AND GUTTER, TYPE B-6.24 | 7 AGGREGATE SUBGRADE, 12" | 12 TOPSOIL PLACEMENT, 24" (LANDSCAPED MEDIAN - SEE MEDIAN LANDSCAPING DETAILS) |
| 2 COMBINATION CONCRETE CURB AND GUTTER, TYPE B-6.12 | 8 PORTLAND CEMENT CONCRETE SIDEWALK, 5" WITH AGGREGATE BASE COURSE, TYPE B, 3" | 13 SEEDING CLASS 2A (SEE LANDSCAPING PLAN FOR SEEDING LIMITS) |
| 3 BITUMINOUS CONCRETE SURFACE COURSE, SUPERPAVE, MIX "D", N70, 1-1/2" | 9 STABILIZED BITUMINOUS PATH BITUMINOUS CONCRETE SURFACE COURSE, SUPERPAVE, MIX "C", N50, 3"; AGGREGATE BASE COURSE, TYPE B, 6" | 14 SODDING, SALT TOLERANT (SEE LANDSCAPING PLAN FOR SODDING LIMITS) |
| 4 BITUMINOUS CONCRETE BINDER COURSE, SUPERPAVE, IL-19, N70, 2-1/2" | 10 POROUS GRANULAR EMBANKMENT, SPECIAL 18" WITH GEOTECHNICAL FABRIC FOR GROUND STABILIZATION | 15 AGGREGATE SHOULDERS, TYPE B, 6" |
| 5 BITUMINOUS BASE COURSE, SUPERPAVE, 8" | | 16 LEVELING BINDER (MACHINE METHOD), SUPERPAVE, N70 |
| | | 17 EMBANKMENT |



PROPOSED TYPICAL SECTION
 TAYLOR STREET
 STA. 200+00 TO STA. 202+50



PROPOSED TYPICAL SECTION
 TAYLOR STREET
 STA. 202+50 TO STA. 205+59



PROPOSED TYPICAL SECTION
 TAYLOR STREET
 STA. 205+59 TO STA. 208+59