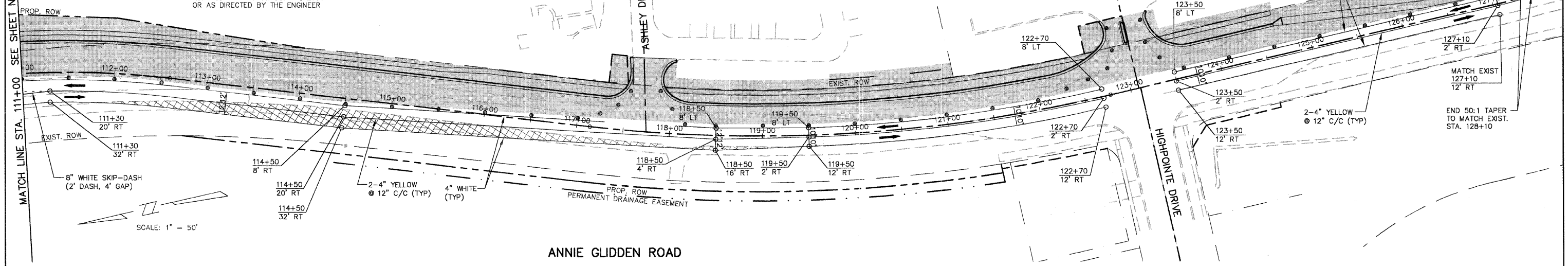


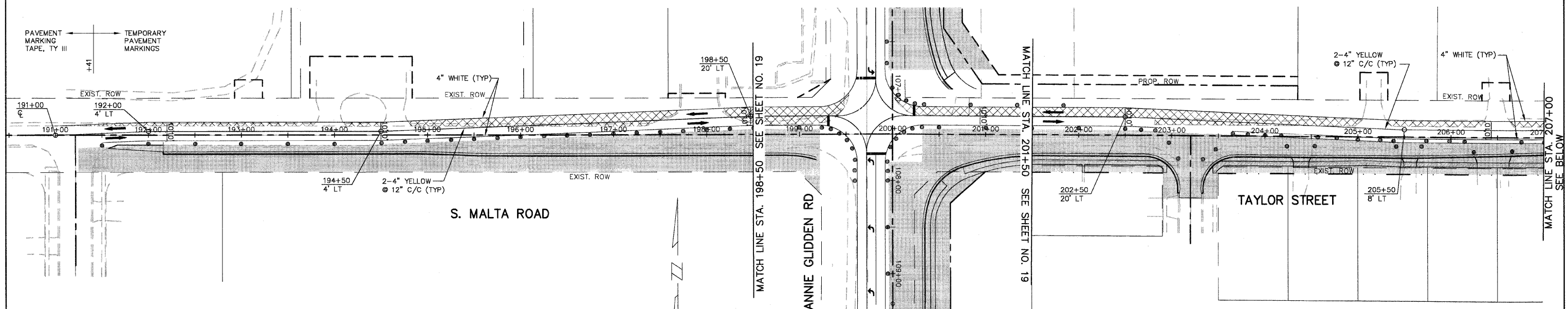
F.A.U. ROUTE	Contract	COUNTY	TOTAL SHEETS
5348	87330	DEKALB	140
	STATE SECTION		NO.
	05-00160-00-WR		20
CONSTRUCTION STAGING PLAN - STAGE 1			
F.H.W.A. REG.5 ILLINOIS PROJECT HRP-2295(001)			

MATCH LINE STA. 111+00 SEE SHEET NO. 19

NOTE:
 ALL CONSTRUCTION ACTIVITIES THAT MAY DISTURB EXISTING SEPTIC TANKS, DRAIN TILES, AND OUTLETS FOR 1030 S. ANNIE GLIDDEN ROAD WILL NOT BE ALLOWED UNTIL DECEMBER 15, 2006 OR AS DIRECTED BY THE ENGINEER



ANNIE GLIDDEN ROAD



S. MALTA ROAD

STAGE 1

