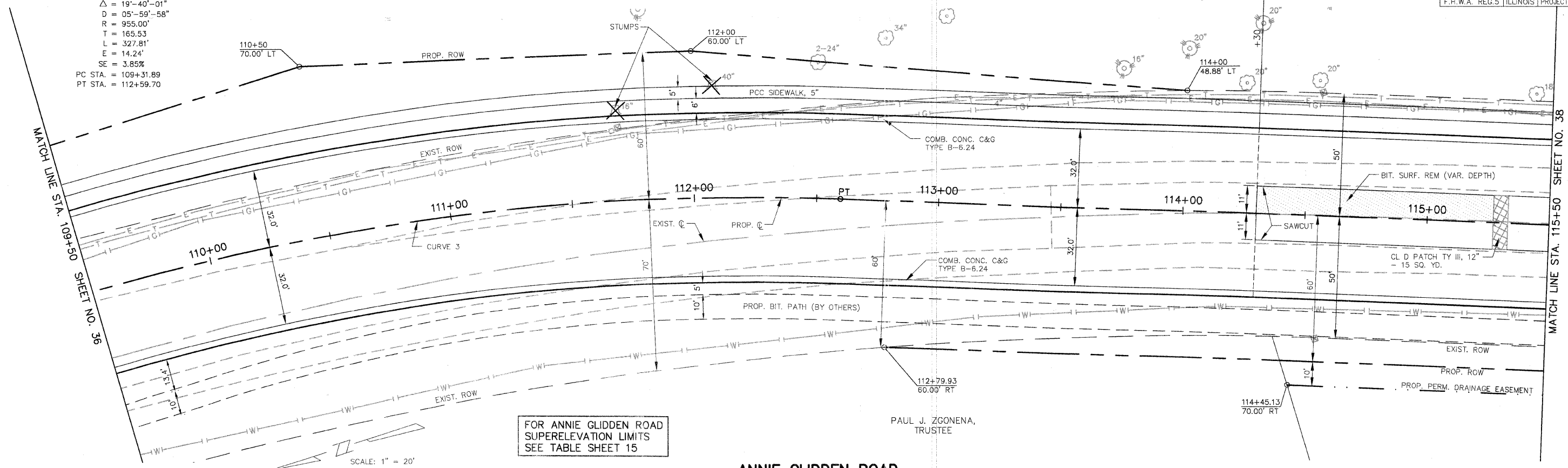


ANNIE GLIDDEN ROAD CURVE 3

PI STA. = 110+97.43
 Δ = 19°-40'-01"
 D = 05°-59'-58"
 R = 955.00'
 T = 165.53
 L = 327.81'
 E = 14.24'
 SE = 3.85%
 PC STA. = 109+31.89
 PT STA. = 112+59.70

MARY A. JOHNSON,
 TRUSTEE

RECONSTRUCT
 WIDEN & RESURFACE



FOR ANNIE GLIDDEN ROAD
 SUPERELEVATION LIMITS
 SEE TABLE SHEET 15

PAUL J. ZGONENA,
 TRUSTEE

SCALE: 1" = 20'

ANNIE GLIDDEN ROAD

