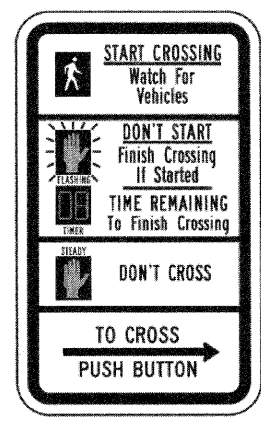
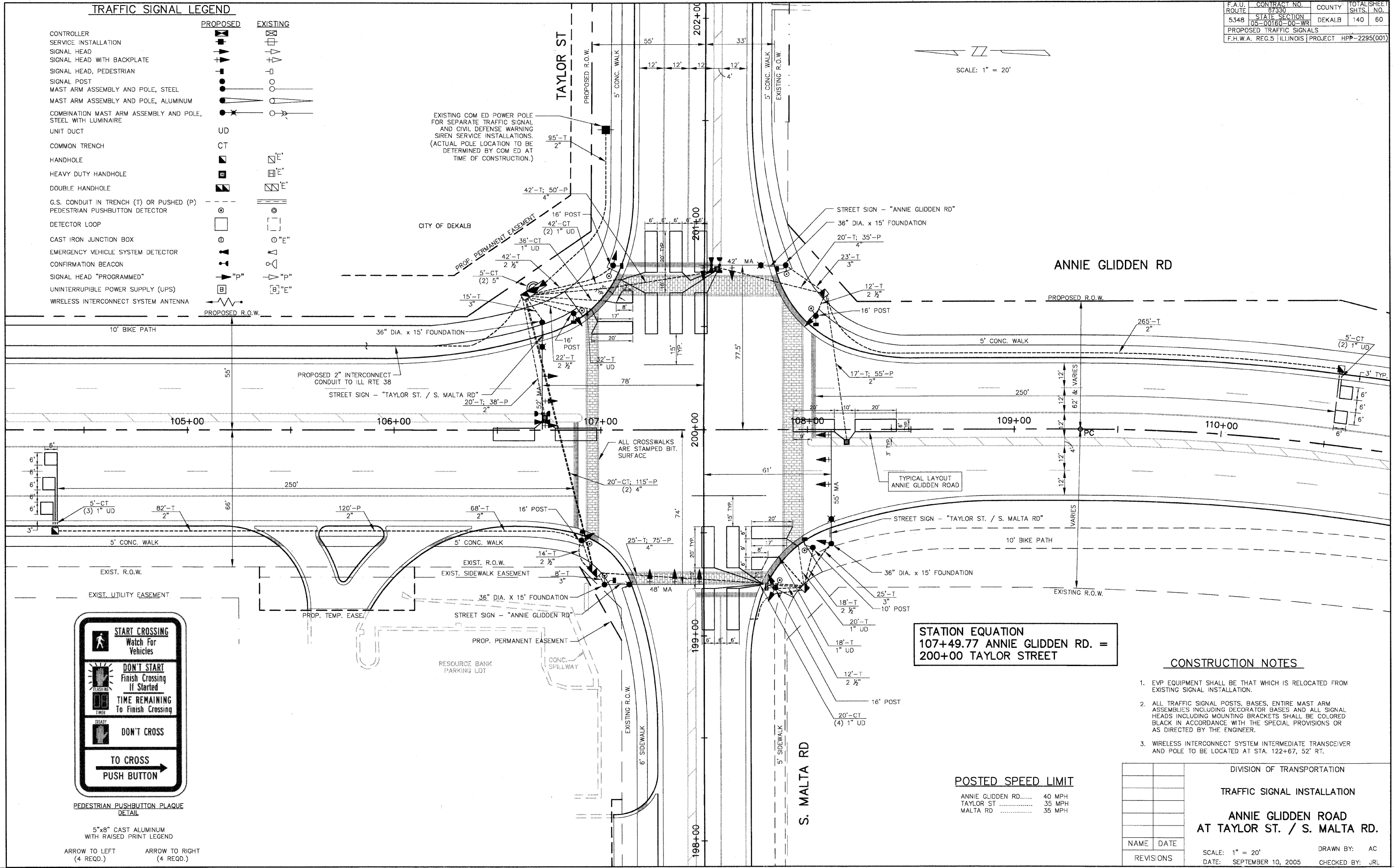


**TRAFFIC SIGNAL LEGEND**

	PROPOSED	EXISTING
CONTROLLER		
SERVICE INSTALLATION		
SIGNAL HEAD		
SIGNAL HEAD WITH BACKPLATE		
SIGNAL HEAD, PEDESTRIAN		
SIGNAL POST		
MAST ARM ASSEMBLY AND POLE, STEEL		
MAST ARM ASSEMBLY AND POLE, ALUMINUM		
COMBINATION MAST ARM ASSEMBLY AND POLE, STEEL WITH LUMINAIRE		
UNIT DUCT	UD	
COMMON TRENCH	CT	
HANDHOLE		
HEAVY DUTY HANDHOLE		
DOUBLE HANDHOLE		
G.S. CONDUIT IN TRENCH (T) OR PUSHED (P)		
PEDESTRIAN PUSHBUTTON DETECTOR		
DETECTOR LOOP		
CAST IRON JUNCTION BOX		
EMERGENCY VEHICLE SYSTEM DETECTOR		
CONFIRMATION BEACON		
SIGNAL HEAD "PROGRAMMED"	"P"	
UNINTERRUPTIBLE POWER SUPPLY (UPS)		
WIRELESS INTERCONNECT SYSTEM ANTENNA		

F.A.U. ROUTE	CONTRACT NO.	COUNTY	TOTAL SHEET
5348	87330	DEKALB	140
STATE SECTION	PROJECT		
08-00160-00-WR	HPP-2295(001)		

SCALE: 1" = 20'



PEDESTRIAN PUSHBUTTON PLAQUE DETAIL

5'x8" CAST ALUMINUM WITH RAISED PRINT LEGEND  
 ARROW TO LEFT (4 REQD.)      ARROW TO RIGHT (4 REQD.)

**STATION EQUATION**  
 107+49.77 ANNIE GLIDDEN RD. =  
 200+00 TAYLOR STREET

**POSTED SPEED LIMIT**

ANNIE GLIDDEN RD.....	40 MPH
TAYLOR ST .....	35 MPH
MALTA RD .....	35 MPH

**CONSTRUCTION NOTES**

1. EVP EQUIPMENT SHALL BE THAT WHICH IS RELOCATED FROM EXISTING SIGNAL INSTALLATION.
2. ALL TRAFFIC SIGNAL POSTS, BASES, ENTIRE MAST ARM ASSEMBLIES INCLUDING DECORATOR BASES AND ALL SIGNAL HEADS INCLUDING MOUNTING BRACKETS SHALL BE COLORED BLACK IN ACCORDANCE WITH THE SPECIAL PROVISIONS OR AS DIRECTED BY THE ENGINEER.
3. WIRELESS INTERCONNECT SYSTEM INTERMEDIATE TRANSCIEVER AND POLE TO BE LOCATED AT STA. 122+67, 32' RT.

DIVISION OF TRANSPORTATION	
TRAFFIC SIGNAL INSTALLATION	
ANNIE GLIDDEN ROAD AT TAYLOR ST. / S. MALTA RD.	
NAME	DATE
REVISIONS	
SCALE: 1" = 20'	DRAWN BY: AC
DATE: SEPTEMBER 10, 2005	CHECKED BY: JRL