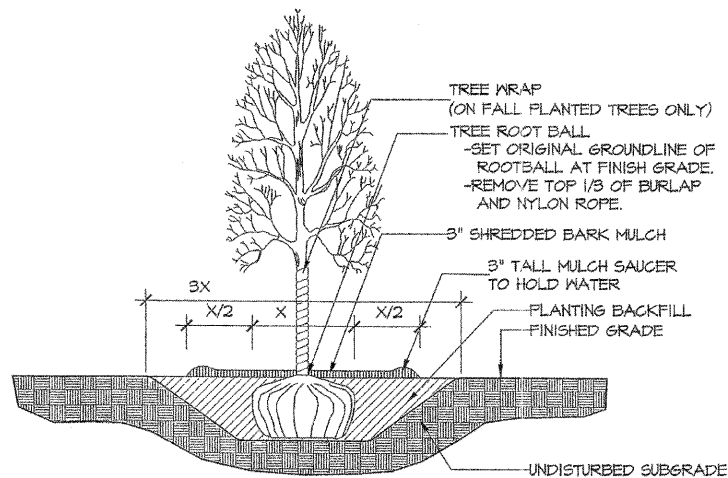
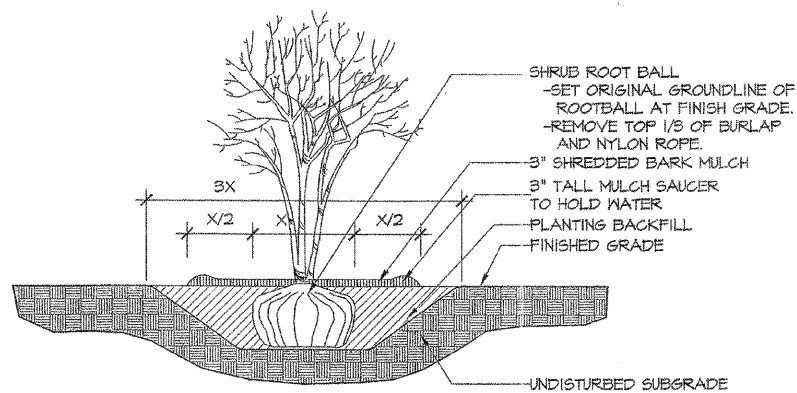


GENERAL LANDSCAPE NOTES

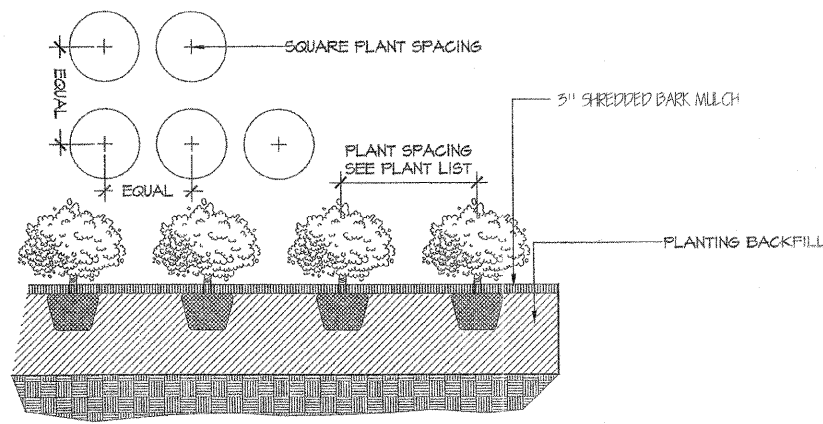
THE LOCATION OF ALL PLANT MATERIAL SHALL BE STAKED BY THE CONTRACTOR FOR APPROVAL BY THE ENGINEER IN FIELD PRIOR TO INSTALLATION OF ANY PLANT MATERIAL. INDIVIDUAL TREES SHALL BE STAKED WITH IDENTITIES WRITTEN ON STAKES. SHRUB AND PERENNIAL BEDS SHALL BE OUTLINED WITH STAKES AND PAINTED LINES.



1 SHADE TREE PLANTING DETAIL
 No Scale



2 SHRUB PLANTING DETAIL
 No Scale



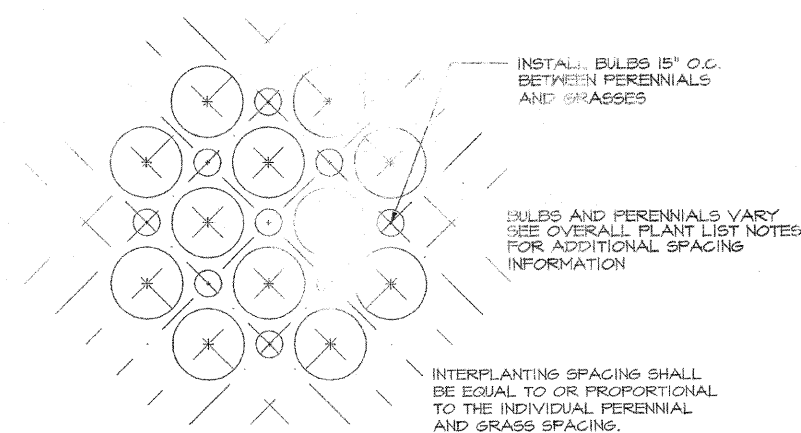
3 PERENNIAL / GROUNDCOVER PLANTING DETAIL
 No Scale

SCHEDULE OF PLANT MATERIAL

	SCIENTIFIC NAME	COMMON NAME	MEASURED SIZE	SPACING	UNIT	QUANTITY
TREES	ACER X FREEMANII 'ARMSTRONG'	ARMSTRONG FREEMAN MAPLE	3" CALIPER	AS SHOWN	EACH	1
	FRAXINUS AMERICANA 'AUTUMN APPLESAUCE'	AUTUMN APPLESAUCE WHITE ASH	3" CALIPER	AS SHOWN	EACH	28
	GLEDITSIA TRIACANTHOS INERMIS 'SHADEMASTER'	SHADEMASTER THORNLESS COMMON HONEYLOCUST	3" CALIPER	AS SHOWN	EACH	30
	MALUS 'SPRING SNOW'	SPRING SNOW CRABAPPLE	3" CALIPER, TREE FORM	AS SHOWN	EACH	11
	TILIA CORDATA	LITTLELEAF LINDEN	3" CALIPER	AS SHOWN	EACH	25
SHRUBS	ARONIA MELANOCARPA 'MORTON'	IROQUOIS BEAUTY BLACK CHOKEBERRY	2.5' HEIGHT	3' C/C	EACH	54
	BERBERIS THUNBERGII 'BAILONE'	RUBY CAROUSEL BARBERRY	2' HEIGHT	2' C/C	EACH	213
	EUONYMUS ALATUS 'TIMBER CREEK'	CHICAGO FIRE BURNING BUSH	3' HEIGHT	AS SHOWN	EACH	10
	HAMAMELIS MOLLIS	CHINESE WITCHHAZEL	5' HEIGHT	AS SHOWN	EACH	1
	ILEX VERTICILLATA 'RED SPRITE'	RED SPRITE WINTERBERRY	18" HEIGHT	AS SHOWN	EACH	20
	RHUS AROMATICA 'GRO-LOW'	GRO-LOW FRAGRANT SUMAC	18" HEIGHT	3' C/C	EACH	60
	VIBURNUM DENTATUM 'BLUE MUFFIN'	BLUE MUFFIN ARROWWOOD	3' HEIGHT	AS SHOWN	EACH	15
GRASSES	MOLINIA CAERULEA 'MOORHEXE'	PURPLE MOOR GRASS	1 GALLON	2.5' C/C	EACH	18
	PANICUM VIRGATUM 'HEAVY METAL'	HEAVY METAL SWITCH GRASS	1 GALLON	2' C/C	EACH	44
	SCHIZACHYRIUM SCOPARIUM	LITTLE BLUESTEM	1 GALLON	2' C/C	EACH	119
	SPOROBLULUS HETEROLEPIS	PRAIRIE DROPSEED	1 GALLON	2.5' C/C	EACH	142
	PERENNIALS	HEMEROCALLIS 'HAPPY RETURNS'	HAPPY RETURNS DAYLILY	1 GALLON	1.25' C/C	EACH
SEDUM 'AUTUMN JOY'		AUTUMN JOY SEDUM	1 GALLON	1.5' C/C	EACH	89

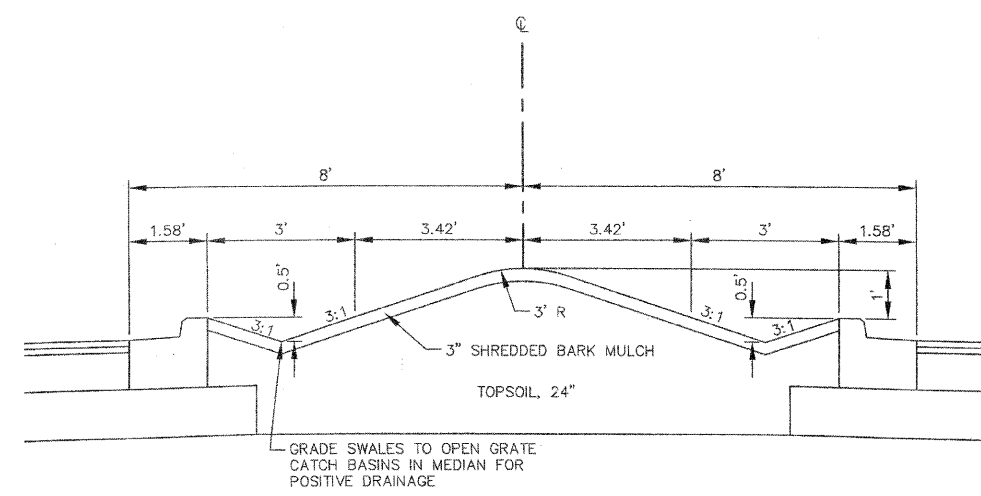
NOTE: ALL TREES AND SHRUBS SHALL BE BALLED AND BURLAPPED.

3" SHREDDED BARK MULCH SY 1500



4 INTERPLANTING DETAIL
 No Scale

LANDSCAPED MEDIAN GRADING TYPICAL SECTION



GRADE SWALES TO OPEN GRATE CATCH BASINS IN MEDIAN FOR POSITIVE DRAINAGE