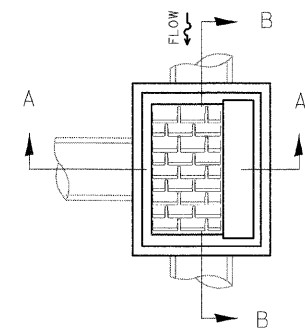
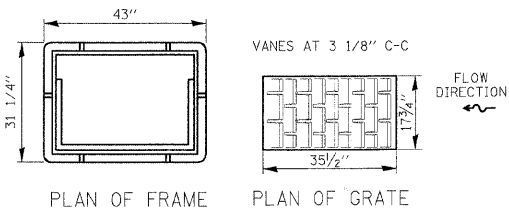


SEC. A-A

SEC. B-B

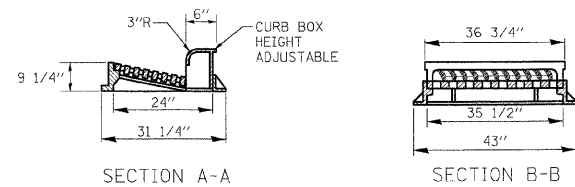


DETAIL OF FRAME & GRATE, SPECIAL



PLAN OF FRAME

PLAN OF GRATE



SECTION A-A

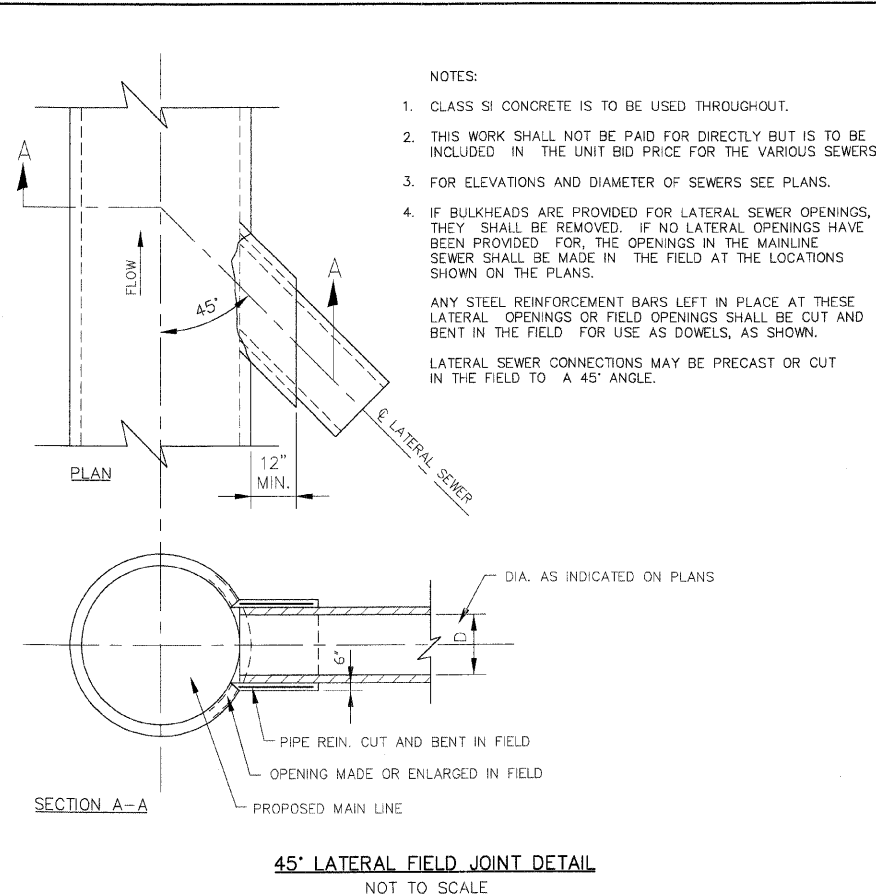
SECTION B-B

CATCH BASINS, SPECIAL WITH FRAME & GRATE, SPECIAL - DETAIL

NOT TO SCALE

NOTES:

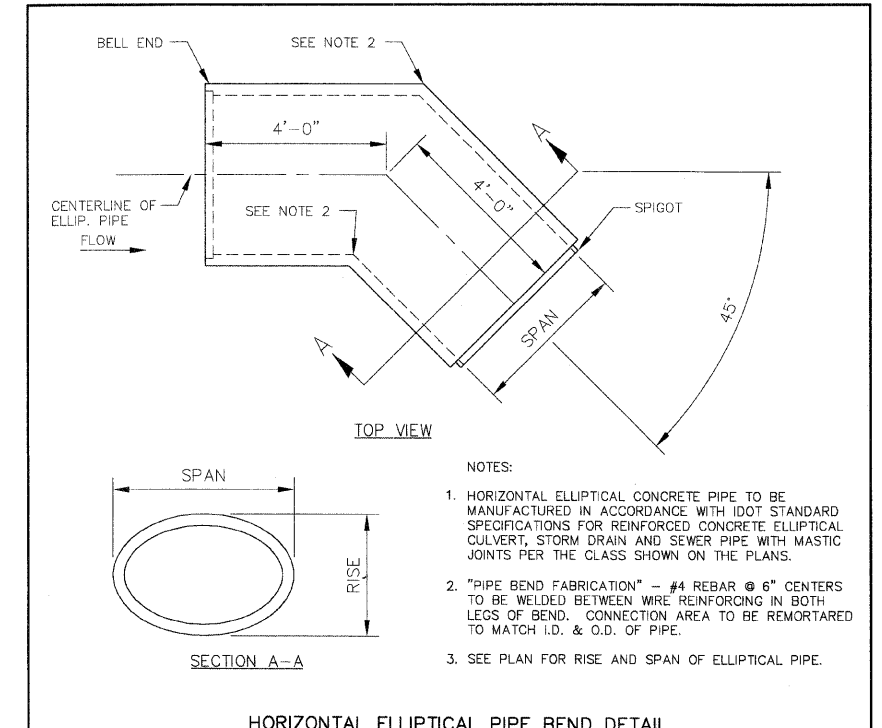
- ** STEPS SHALL BE OMITTED WHEN THE STRUCTURE DEPTH IS LESS THAN 5'. SEE STANDARD 602701 FOR DETAILS OF STEPS.
- EXCEPT AS NOTED HEREON CATCH BASINS, SPECIAL, SHALL BE CONSTRUCTED IN ACCORDANCE WITH SECTION 602 OF THE STANDARD SPECIFICATIONS.
- THE SIDE WALLS MAY BE BUILT AS PRECAST SEGMENTED SECTIONS.
- CLASS SI CONCRETE OR PRECAST CONCRETE SHALL BE USED THROUGHOUT. PRECAST CONCRETE SHALL BE IN ACCORDANCE WITH SECTION 504.01 THRU 504.05 OF THE STANDARD SPECIFICATIONS EXCEPT THAT CONCRETE STRENGTH SHALL BE 27.5 MPa (4,000 psi) AFTER 28 DAYS.
- ALL VOIDS AROUND PIPE ENTRANCE, BOTH INSIDE AND OUTSIDE, SHALL BE SEALED WITH MORTAR.



45° LATERAL FIELD JOINT DETAIL

NOT TO SCALE

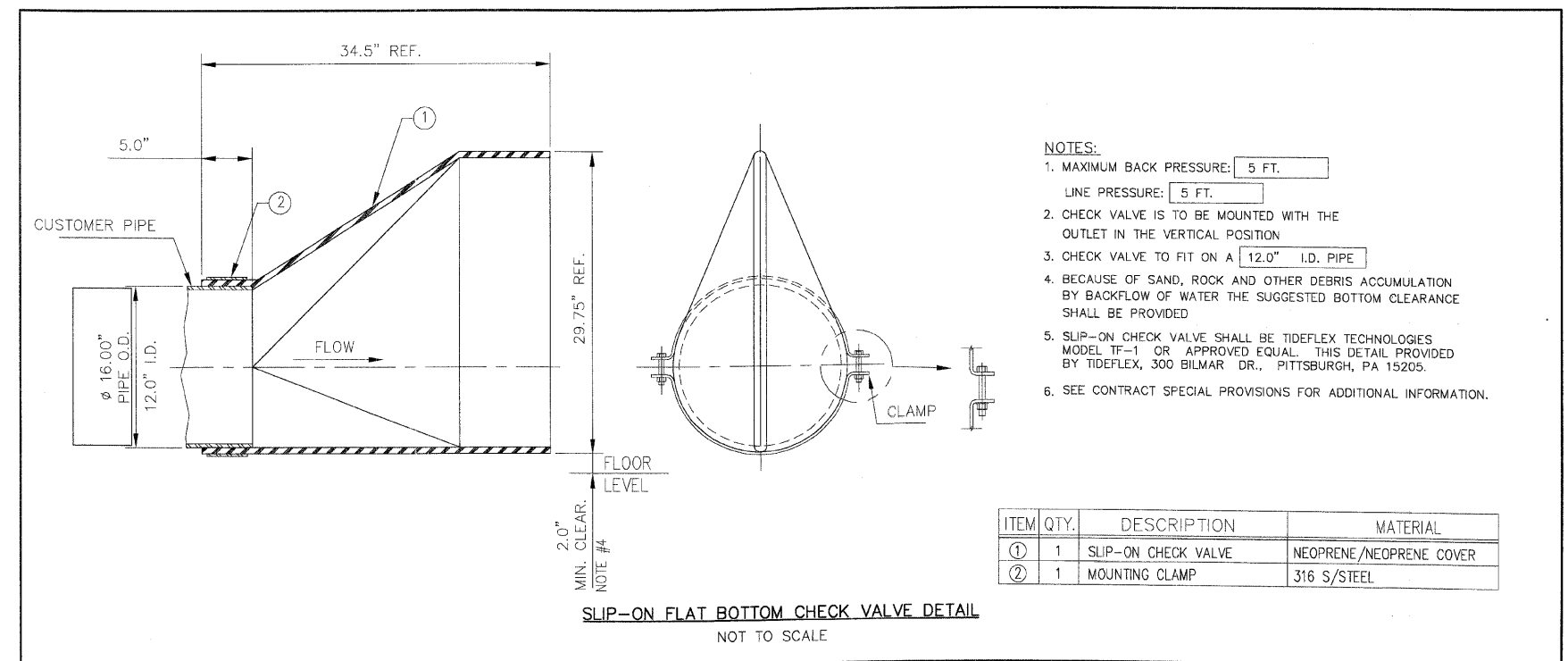
- NOTES:
- CLASS SI CONCRETE IS TO BE USED THROUGHOUT.
 - THIS WORK SHALL NOT BE PAID FOR DIRECTLY BUT IS TO BE INCLUDED IN THE UNIT BID PRICE FOR THE VARIOUS SEWERS.
 - FOR ELEVATIONS AND DIAMETER OF SEWERS SEE PLANS.
 - IF BULKHEADS ARE PROVIDED FOR LATERAL SEWER OPENINGS, THEY SHALL BE REMOVED. IF NO LATERAL OPENINGS HAVE BEEN PROVIDED FOR THE OPENINGS IN THE MAINLINE SEWER SHALL BE MADE IN THE FIELD AT THE LOCATIONS SHOWN ON THE PLANS.
- ANY STEEL REINFORCEMENT BARS LEFT IN PLACE AT THESE LATERAL OPENINGS OR FIELD OPENINGS SHALL BE CUT AND BENT IN THE FIELD FOR USE AS DOWELS, AS SHOWN.
- LATERAL SEWER CONNECTIONS MAY BE PRECAST OR CUT IN THE FIELD TO A 45° ANGLE.



HORIZONTAL ELLIPTICAL PIPE BEND DETAIL

NOT TO SCALE

- NOTES:
- HORIZONTAL ELLIPTICAL CONCRETE PIPE TO BE MANUFACTURED IN ACCORDANCE WITH IDOT STANDARD SPECIFICATIONS FOR REINFORCED CONCRETE ELLIPTICAL CULVERT, STORM DRAIN AND SEWER PIPE WITH MASTIC JOINTS PER THE CLASS SHOWN ON THE PLANS.
 - "PIPE BEND FABRICATION" - #4 REBAR @ 6" CENTERS TO BE WELDED BETWEEN WIRE REINFORCING IN BOTH LEGS OF BEND. CONNECTION AREA TO BE REMORTARED TO MATCH I.D. & O.D. OF PIPE.
 - SEE PLAN FOR RISE AND SPAN OF ELLIPTICAL PIPE.



SLIP-ON FLAT BOTTOM CHECK VALVE DETAIL

NOT TO SCALE

- NOTES:
- MAXIMUM BACK PRESSURE: 5 FT.
 - LINE PRESSURE: 5 FT.
 - CHECK VALVE IS TO BE MOUNTED WITH THE OUTLET IN THE VERTICAL POSITION
 - CHECK VALVE TO FIT ON A 12.0" I.D. PIPE
 - BECAUSE OF SAND, ROCK AND OTHER DEBRIS ACCUMULATION BY BACKFLOW OF WATER THE SUGGESTED BOTTOM CLEARANCE SHALL BE PROVIDED
 - SLIP-ON CHECK VALVE SHALL BE TIDEFLEX TECHNOLOGIES MODEL TF-1 OR APPROVED EQUAL. THIS DETAIL PROVIDED BY TIDEFLEX, 300 BILMAR DR., PITTSBURGH, PA 15205.
 - SEE CONTRACT SPECIAL PROVISIONS FOR ADDITIONAL INFORMATION.

ITEM	QTY.	DESCRIPTION	MATERIAL
①	1	SLIP-ON CHECK VALVE	NEOPRENE/NEOPRENE COVER
②	1	MOUNTING CLAMP	316 S/STEEL