

RTE. NO.	SECTION	COUNTY	TOTAL SHEETS	SHEET NO.
C.R. 603	02-23118-00-BR	ADAMS	13	1

**INDEX OF SHEETS**

SHEET NO.	DESCRIPTION
1	COVER SHEET
2	SUMMARY OF QUANTITIES AND TYPICAL SECTIONS
3	PLAN AND PROFILE
4-5	CROSS SECTIONS
6	GENERAL PLAN & ELEVATION
7	GENERAL NOTES & MISC. DETAILS
8	PPC DECK BEAM SUPERSTRUCTURE
9	SUPERSTRUCTURE DETAILS
10	STEEL RAILING, TYPE S-1
11	ABUTMENT DETAILS
12	PIER DETAILS
13	BRIDGE JOINT SYSTEM - FIXED

**STANDARD BRIDGE SHEETS**

STD. CN	NAME PLATE
STD. CX-1	PILES

**HIGHWAY STANDARDS**

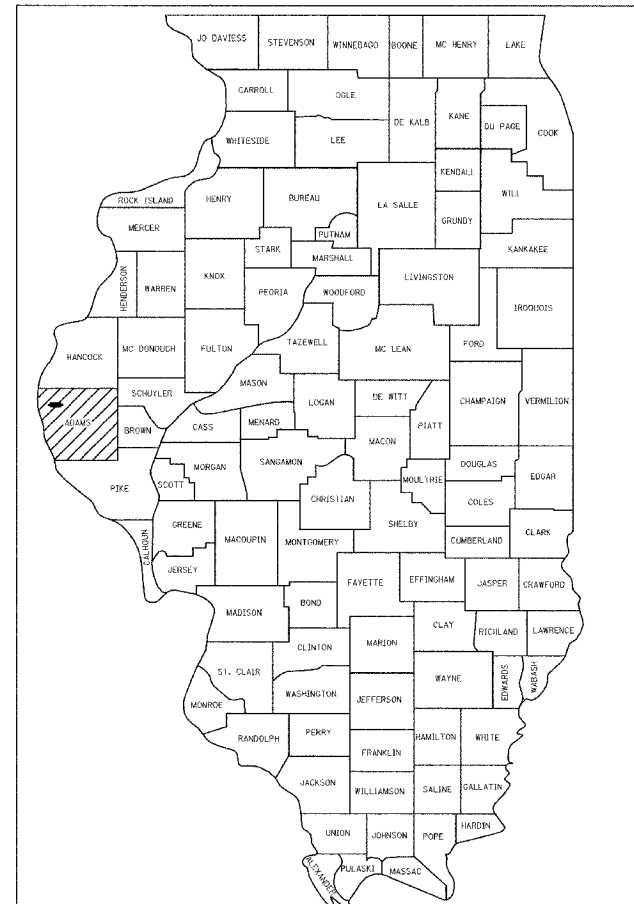
STD. 702001-06	TRAFFIC CONTROL
STD. B.L.R. 21-6	TRAFFIC CONTROL

ROADWAY CLASSIFICATION: LOCAL ROAD

ADT:	90
DESIGN SPEED:	30
DESIGN GUIDELINES:	3 R

STATE OF ILLINOIS  
DEPARTMENT OF TRANSPORTATION  
DIVISION OF HIGHWAYS  
**PLANS FOR PROPOSED  
LOCAL AGENCY IMPROVEMENT  
BRIDGE REPLACEMENT & REHABILITATION PROGRAM**

ADAMS COUNTY URSA ROAD DISTRICT  
EXISTING STRUCTURE NO. 001-3046  
PROPOSED STRUCTURE NO. 001-3417  
SEC. 02-23118-00-BR  
PROJECT BROS-001(63)  
JOB NUMBER C-96-208-06  
TR-20 / C.R. 603E OVER BEAR CREEK



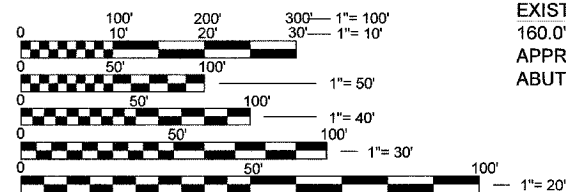
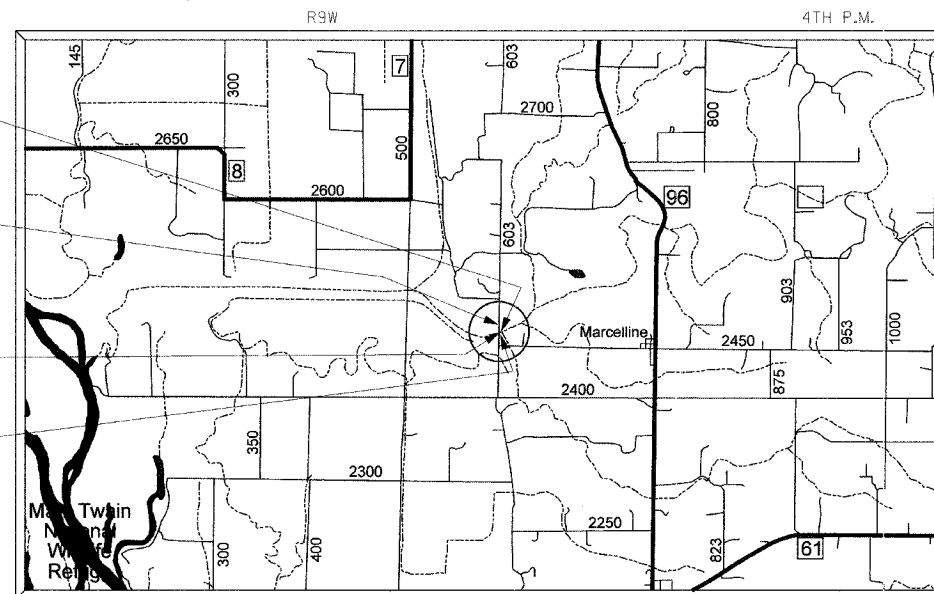
LOCATION OF SECTION INDICATED THIS: - [shaded area]

STA 5+43.00 - CENTER OF PROPOSED STRUCTURE  
223'-5" B/B ABUT., 3-SPAN, 160.0' STEEL TRUSS MAIN SPAN WITH 30.0' PRECAST PRESTRESSED CONCRETE DECK BEAMS (17" Dp.) FOR APPROACH SPANS ON OPEN PILE SUPPORTED ABUTMENTS, NO SKEW

BEGIN IMPROVEMENT  
STA 4+70.00

EXISTING STRUCTURE - 180.0' TOTAL LENGTH  
160.0' STEEL TRUSS SPAN WITH 20.0' APPROACH SPAN CLOSED SOUTH ABUT, OPEN NORTH ABUT, NO SKEW

END IMPROVEMENT  
STA 10+16.18



FULL SIZE PLANS HAVE BEEN PREPARED USING STANDARD ENGINEERING SCALES. REDUCED SIZED PLANS WILL NOT CONFORM TO STANDARD SCALES. IN MAKING MEASUREMENTS ON REDUCED PLANS, THE ABOVE SCALES MAY BE USED.

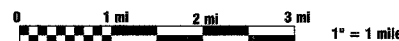
J.U.L.I.E.  
JOINT UTILITY LOCATION INFORMATION FOR EXCAVATION  
1-800-892-0123

ADAMS ELECTRIC COOPERATIVE 217-593-7120  
ADAMS TELEPHONE COOPERATIVE 217-696-4411

**CONTRACT NO. 93421**

ADAMS COUNTY SECTION 02-23118-00-BR RTE. NO. C.R. 603E

LOCATION MAP



TOTAL AND NET LENGTH OF PROJECT = 546.18 FT = 0.103 MI  
STRUCTURE LENGTH (BK.-BK. ABUT.) = 223.42'

APPROVED	May 18 20 06	<i>Rick A. Kluge</i> ADAMS COUNTY ENGINEER
APPROVED	May 18 20 06	<i>Serg Herman</i> URSA ROAD COMMISSIONER
PASSED	MAY 26 20 06	<i>Tommy Paul</i> DISTRICT ENGINEER OF LOCAL ROADS & STREETS
PASSED	MAY 26 20 06	<i>W. B. Jones</i> DISTRICT ENGINEER OF CONSTRUCTION
RELEASING FOR BID BASED ON LIMITED REVIEW:	MAY 26 20 06	<i>Christine M. Reed</i> DEPUTY DIRECTOR OF HIGHWAYS, REGION FOUR ENGINEER

STATE OF ILLINOIS  
DEPARTMENT OF TRANSPORTATION

JENNIFER L. SIEBERT  
REGISTERED PROFESSIONAL ENGINEER  
STATE OF ILLINOIS NO. 062-056583  
LICENSE EXPIRES NOVEMBER 30, 2007

*Jennifer L. Siebert*  
JENNIFER L. SIEBERT DATE: 5/17/06

LICENSE NO. 062-056583



SEAL:

PLANS PREPARED BY:

**PSBA**

POEPPING, STONE, BACH & ASSOCIATES, INC.  
100 SOUTH 54TH STREET QUINCY, ILLINOIS 62306  
PH: (217) 223-4605 FAX: (217) 223-1546  
E-MAIL: PSBA@PSBA.COM WWW.PSBA.COM

PRINTED BY THE AUTHORITY OF THE STATE OF ILLINOIS