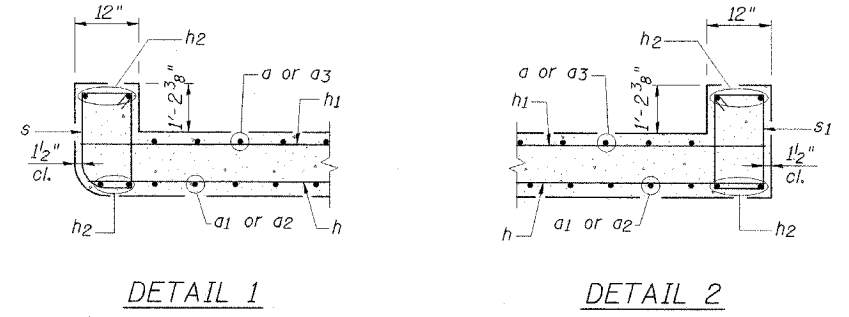
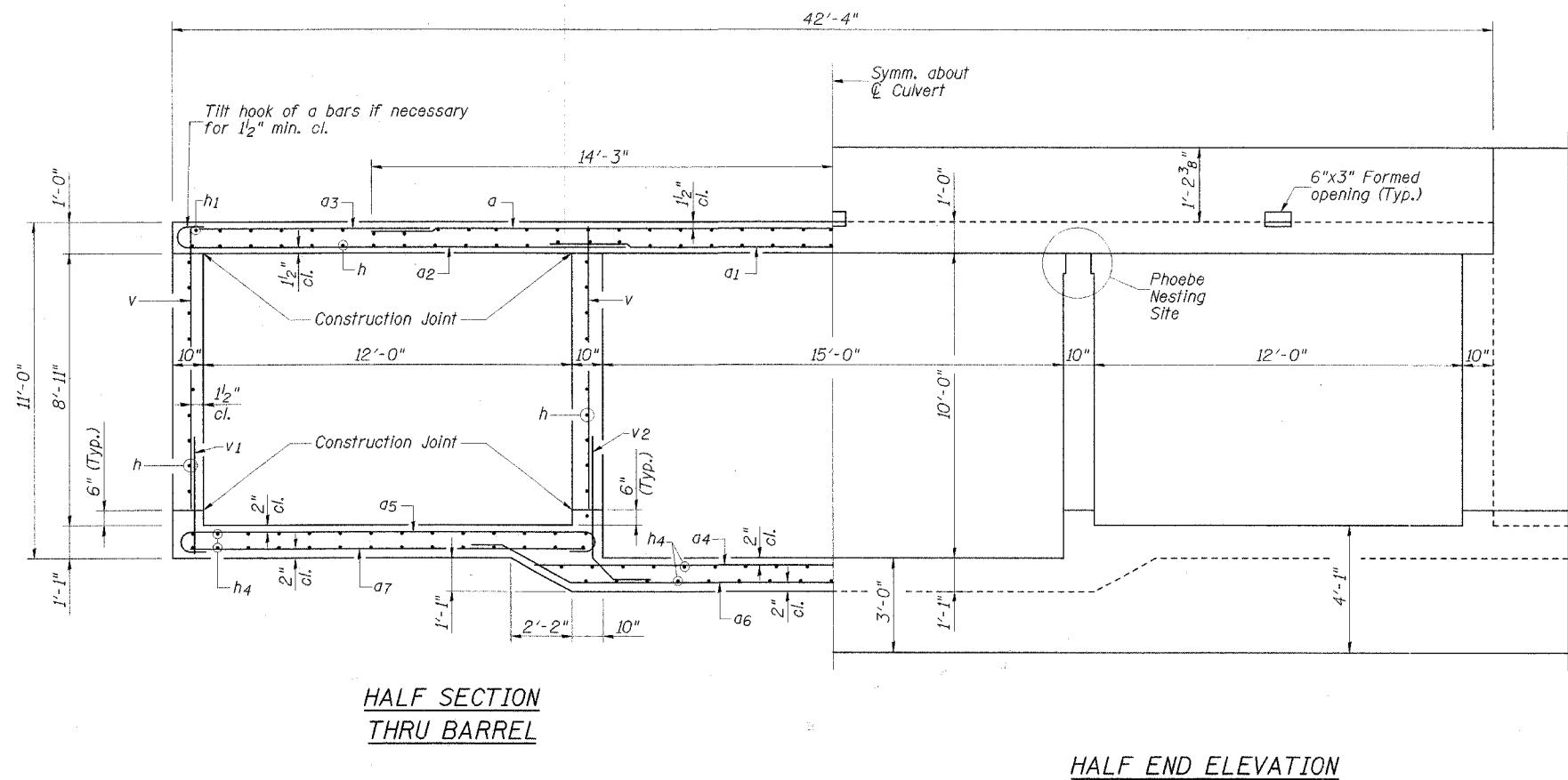


Note:
Notch formed by rough-finished board attached to and removed with formwork.

PHOEBE NESTING SITE DETAIL
(Near Downstream End)



REVISIONS	
NAME	DATE

CITY OF SPRINGFIELD, ILLINOIS
CULVERT DETAILS I
 FAU 8009-AMOS AVE. OVER DRAINAGE DITCH
 SECTION 05-00445-00-BR
 SANGAMON COUNTY
 STATION 4+69.00 S.N. 084-8009

SCALE: NONE DRAWN BY: GLD
 DATE: 5/26/06 CHECKED BY: GBR

CMT
 CRAWFORD MURPHY & TILLY, INC.
 CONSULTING ENGINEERS
 SPRINGFIELD, IL ■ AURORA, IL ■ ST. LOUIS, MO
 ROCKFORD, IL ■ PEORIA, IL ■ CHICAGO, IL

L:\Springfield\050250\Draw\Sheets\CULVERT DETAIL5.DGN 5/24/2006