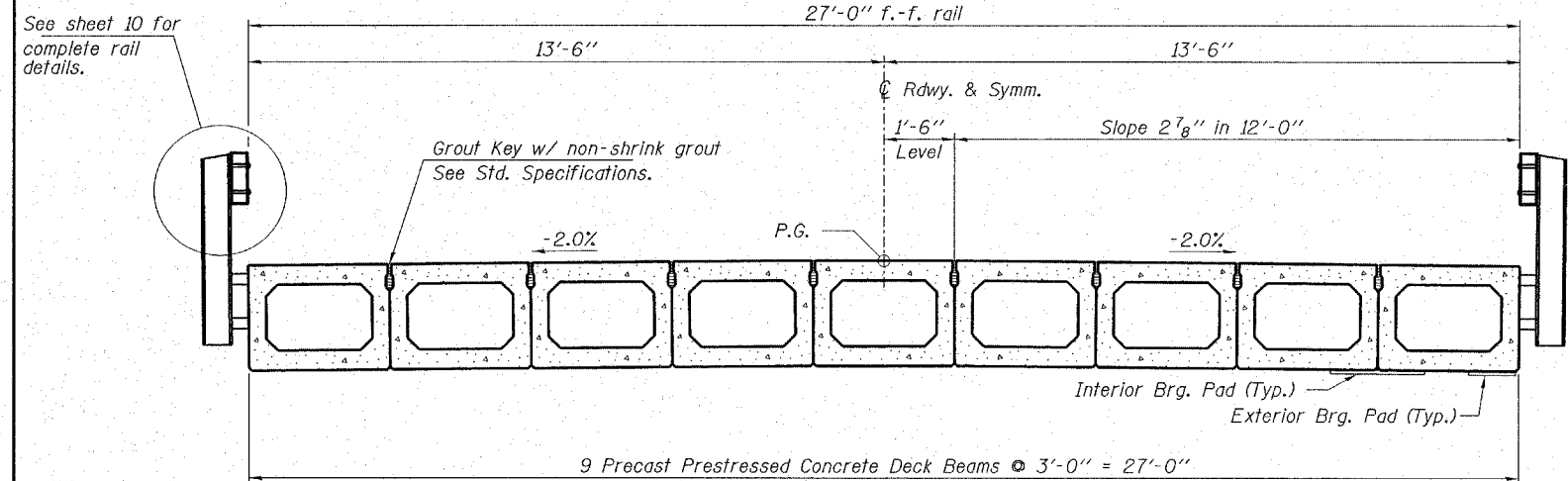
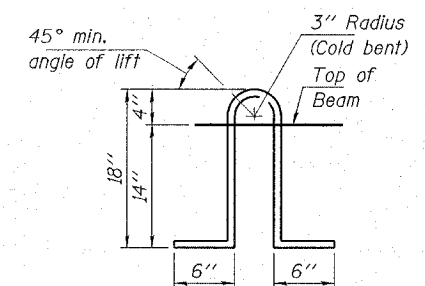


CONTRACT NO. 95480

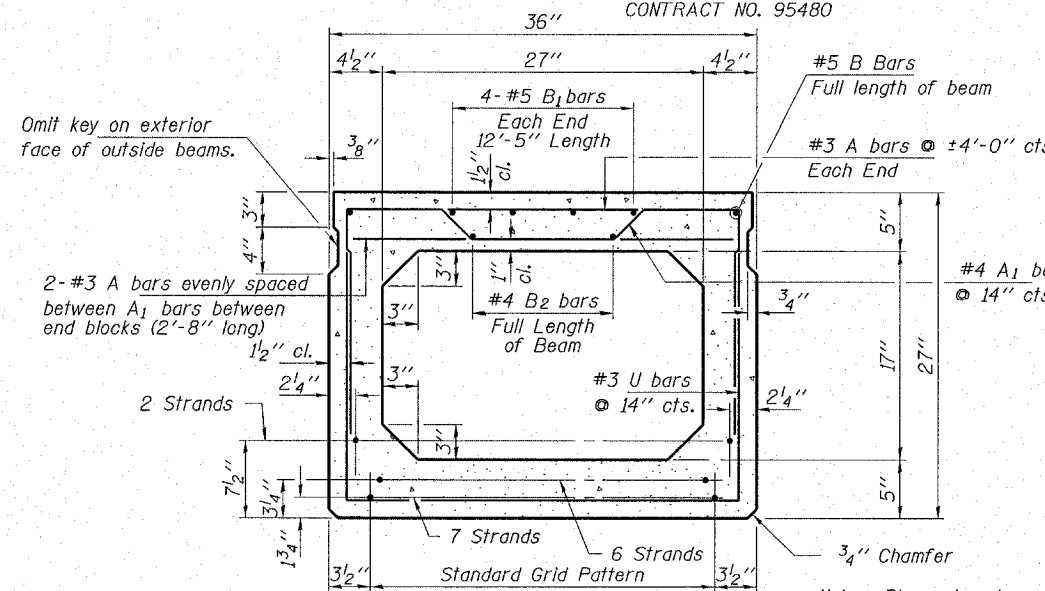


**CROSS SECTION**



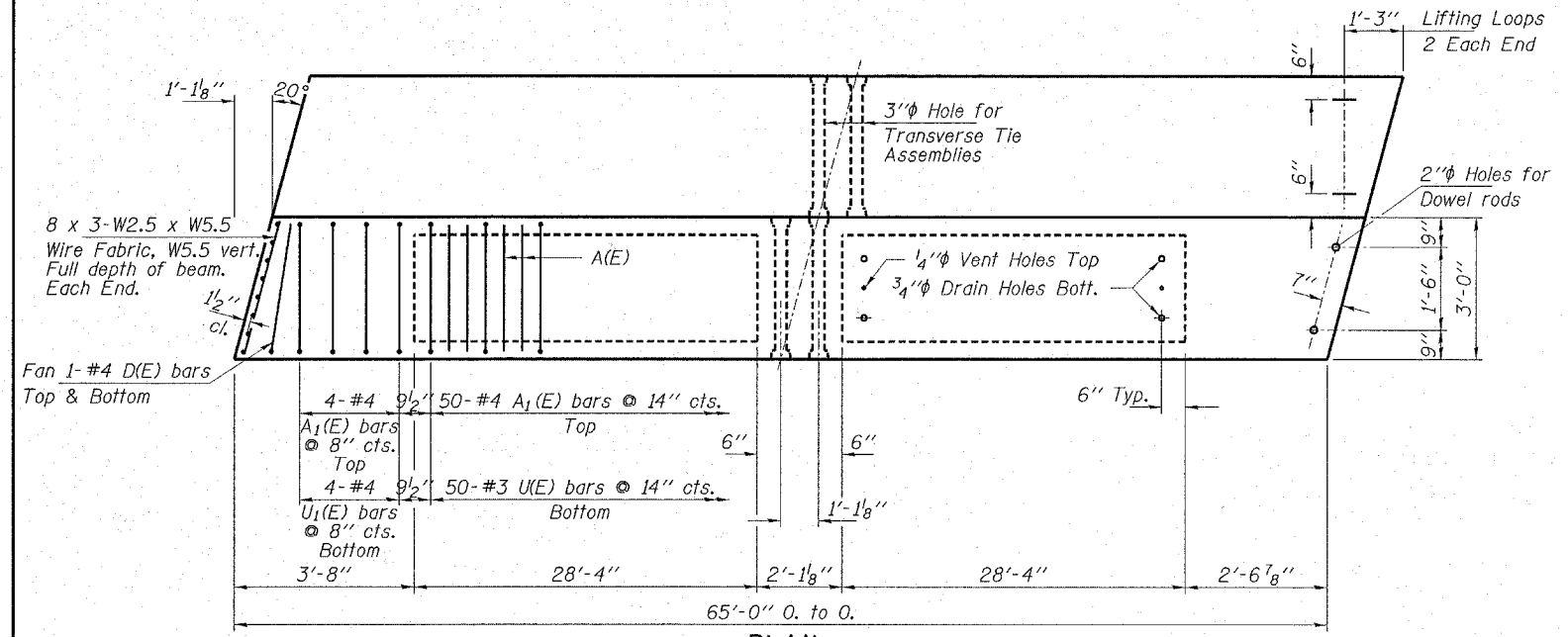
**LIFTING LOOP DETAIL**

Approved alternate may be substituted for the above detail.  
 Note: The loop shall be formed in a manner such that all strands are engaged during lifting. Loops shall be burned off after the beams have been erected.

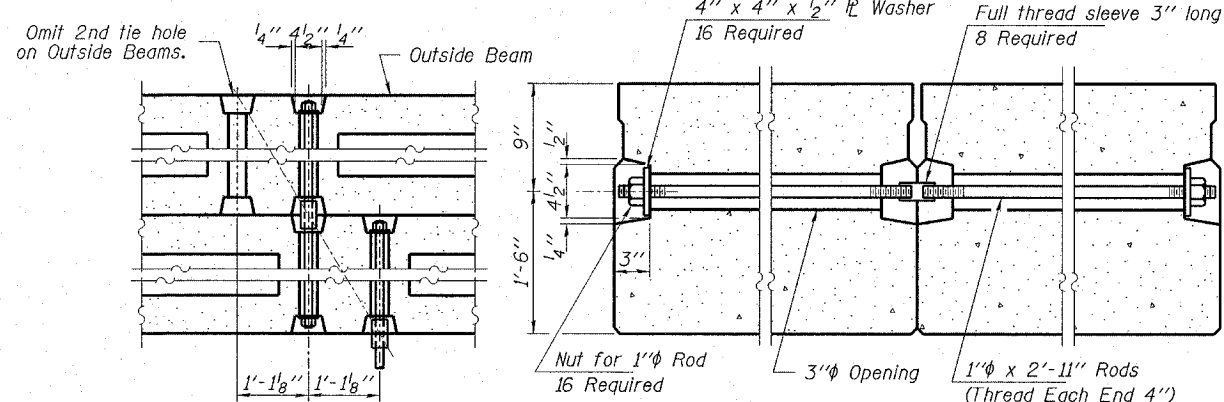


**TYPICAL SECTION**

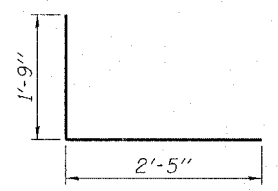
Note: Place strands symmetrically about  $\bar{C}$  of beam.  
 15-1/2"  $\phi$  Strands Each Strand Stressed to 30,900 Lbs.  
 7-Strands 1 3/4" up, 6-Strands 3/4" up, 2-Strands 7/2" up



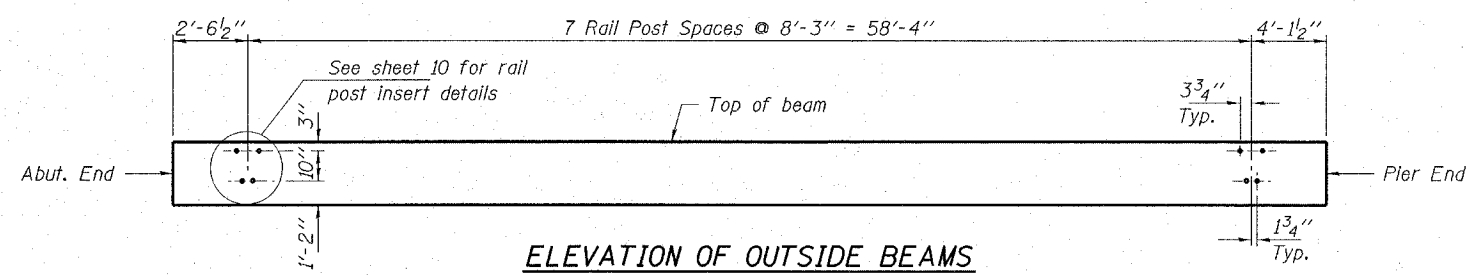
**PLAN**



**TYPICAL TRANSVERSE TIE ASSEMBLY**



**BARS D(E)**



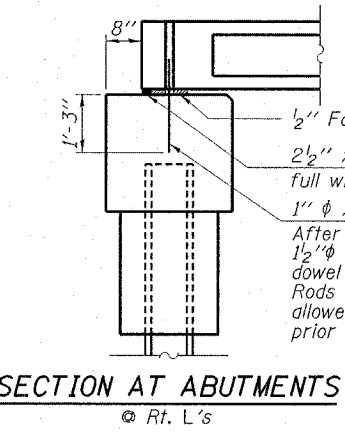
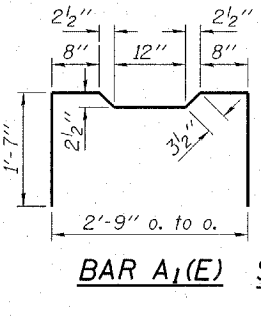
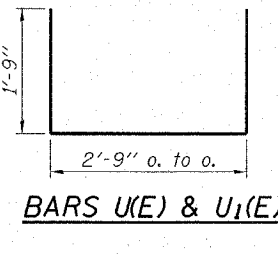
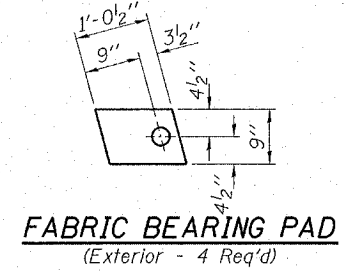
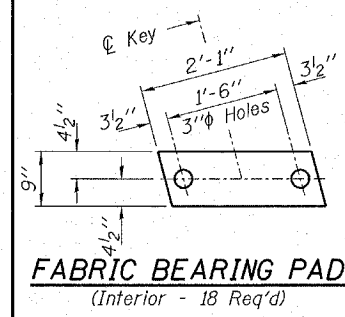
**ELEVATION OF OUTSIDE BEAMS**

Showing Rail Post Spacing

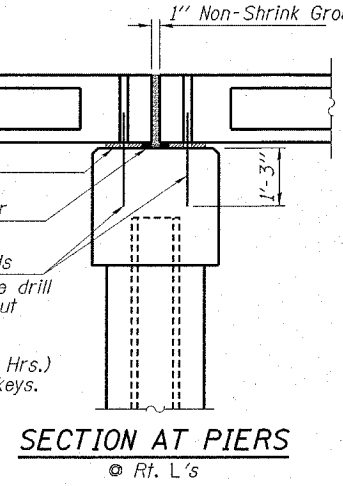
**NOTES**  
 Prestressing steel shall be uncoated high strength, low relaxation 7-wire strand, Grade 270. The nominal diameter shall be 1/2" and the nominal cross-sectional area shall be 0.153 sq. in. Lifting loops shall be 2-2"  $\phi$  -270 ksi strands, as shown.  
 The 1" rods in the transverse tie assembly shall be tightened to a snug fit and the threads set. Pockets that receive transverse tie bar on outside shall be filled with grout after transverse assembly is in place.  
 Reinforcement bars shall conform to the requirements of AASHTO M-31 or M-322 Grade 60. The bearing seat surfaces shall be adjusted by shimming to assure firm and even bearing. Two 1/2" fabric adjusting shims of the dimensions of the Exterior Bearing Pad shall be provided for each bearing.  
 Keyway surfaces shall be cleaned to remove form oil or other bond breaking material prior to shipment of the beams. Cleaning shall be done by sandblasting the keyway areas between top of the beam and the bottom edge of the key.  
 Required Release Strength, f'cl, shall be 4,000 p.s.i.

**BILL OF MATERIAL**

ITEM	UNIT	QUANTITY
Precast Prestressed Concrete Deck Beams (27" Depth)	Sq. Ft.	3,510



1/2" Fabric Brg. Pad  
 2 1/2" x 12" Prem. Jt. Filler full width of bridge.  
 1"  $\phi$  x 2'-6" Dowel Rods  
 After beams are in place drill 1 1/2"  $\phi$  holes in cap & grout dowel rods in place. Rods to be grouted and allowed to cure (Min. 24 Hrs.) prior to grouting shear keys.



**HAMPTON, LENZINI & RENWICK, INC.**  
 CIVIL & STRUCTURAL ENGINEERS  
**ELR**  
 3085 STEVENSON DRIVE, SUITE 201  
 SPRINGFIELD, ILLINOIS 62703  
 (217) 546-3400  
 ELGIN • SPRINGFIELD • DUQUOIN  
 PROJECT NUMBER: 12-23-0025-1 DATE: 05/10/00  
 DESIGNED: J.W.F. CHECKED: S.W.M. DRAWN: D.T.M.

**SUPERSTRUCTURE**  
 SECTION 05-00261-00-BR  
 F.A.S. 690 / C.H. 22 / FOX ROAD  
 CLARK COUNTY  
 STRUCTURE NO. 012-3333 / STATION 10+00