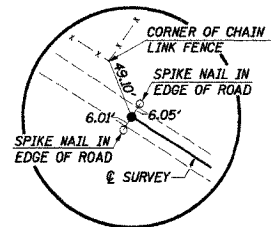
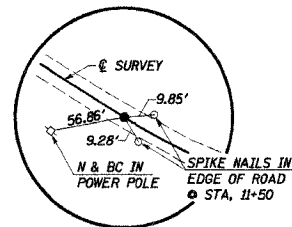


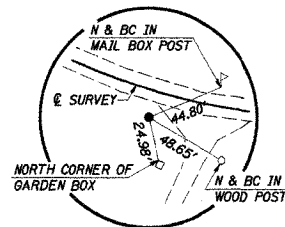
ROUTE NO.	SECTION	COUNTY	TOTAL SHEETS	SHEET NO.
T.R. 133	05-17117-00-BR	SHELBY	21	5
ROAD DIST.		ILLINOIS	RIDGE	
CONTRACT NO. 95484				



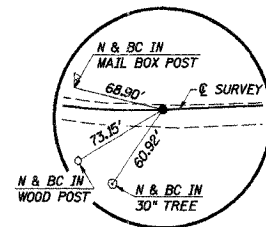
P.O.T. STA. 10+00
P.K. NAIL (FLUSH)



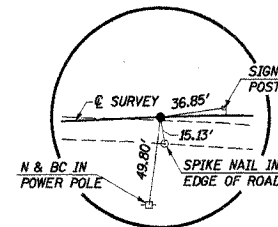
P.C. STA. 11+43.04
P.K. NAIL (FLUSH)



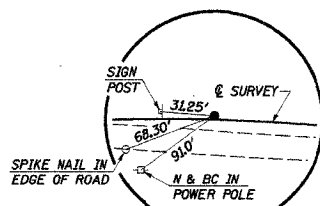
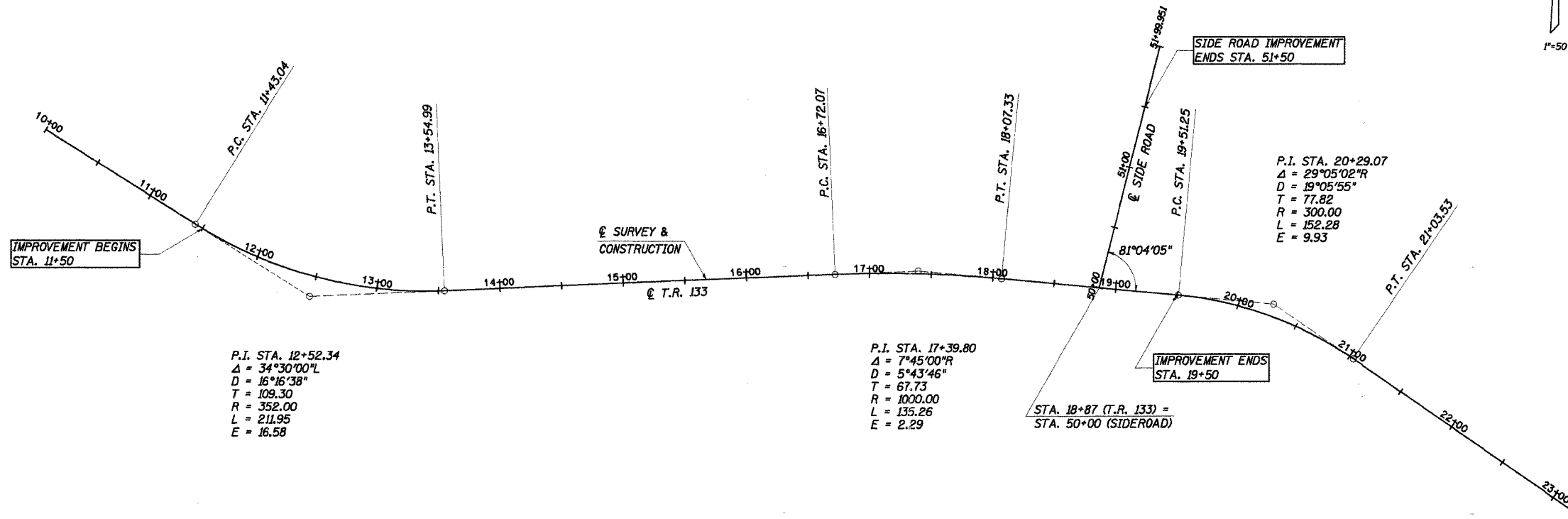
P.I. STA. 12+52.34
IRON PIN (FLUSH)



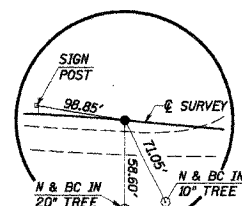
P.T. STA. 13+54.99
P.K. NAIL (FLUSH)



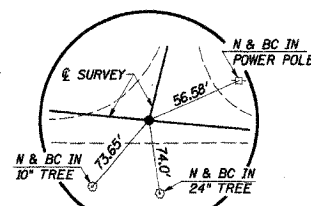
P.C. STA. 16+72.07
IRON PIN (FLUSH)



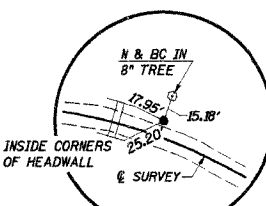
P.I. STA. 17+39.80
IRON PIN (FLUSH)



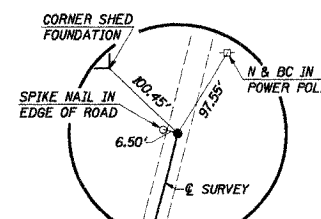
P.T. STA. 18+07.33
IRON PIN (FLUSH)



P.O.T. STA. 18+87 = STA. 50+00
IRON PIN (FLUSH)



P.I. STA. 20+29.07
IRON PIN (FLUSH)



P.O.T. STA. 51+99.95
IRON PIN (FLUSH)

PROPOSED ALIGNMENT AND CROSS TIES
SECTION 05-17117-00-BR
RIDGE ROAD DISTRICT
SHELBY COUNTY
STA. 15+02.38

4440 ASH GROVE SPRINGFIELD, IL 62711 (217) 793-8600 oasinc@insightbb.com	OZYURT AND STONE, INC. CONSULTING ENGINEERS	DRAWN: S.A.P. DATE: 07/28/05	CHECKED: JWD DATE: 08/18/05	JOB NO.: 0504 FILE: 0504TIES.DGN DATE: 02/14/06
---	---	---------------------------------	--------------------------------	---