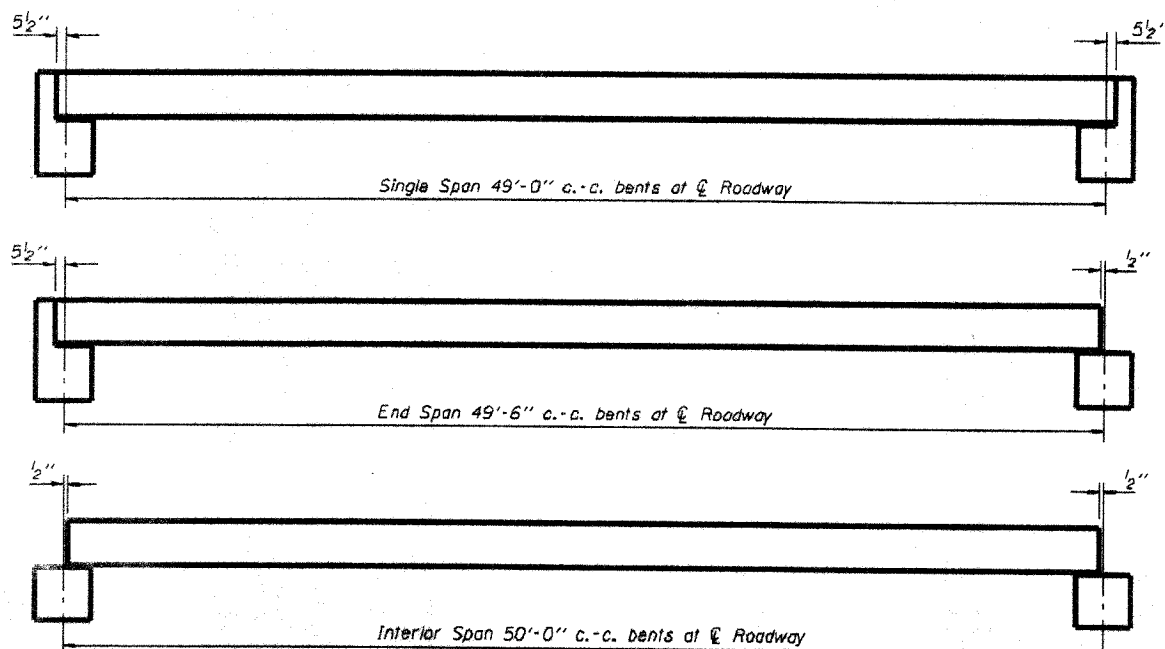
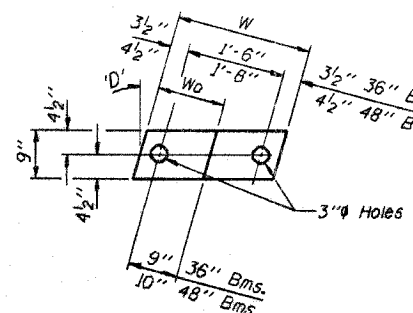
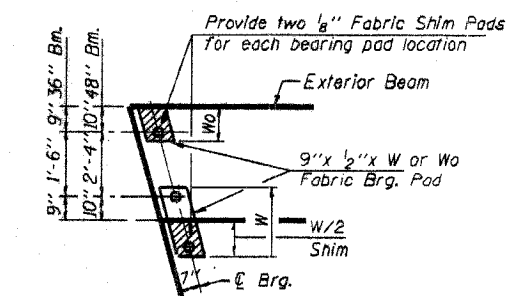


F.S. ROUTE NO.	SECTION	COUNTY	TOTAL SHEETS	SHEET
03-07118-00-52	WAYNE		11	5
STA.	TO STA.			
FED. ROAD DIST. NO.	ILLINOIS	PROJECT	BROS-191 (51)	

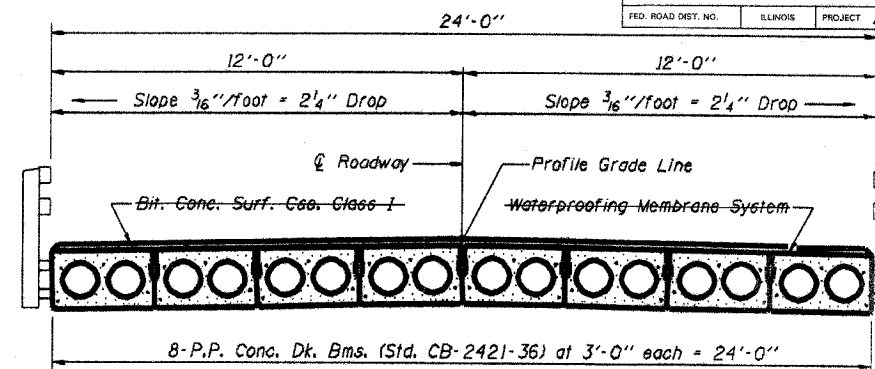


**TYPICAL ELEVATIONS**

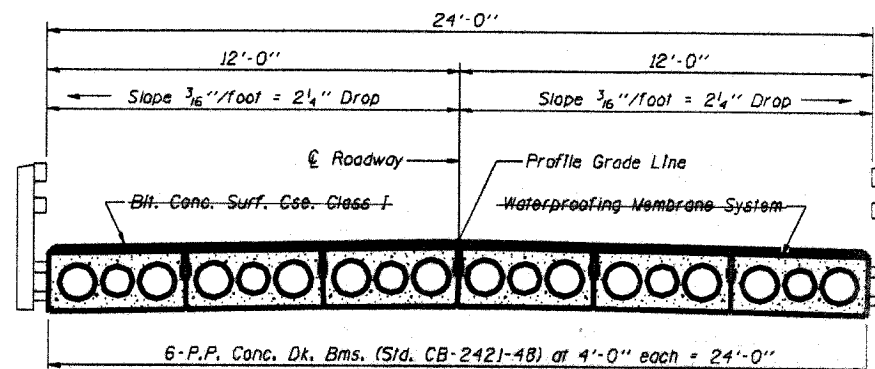


Beam	W	Wo
36"	2'-1"	1'-0 1/2"
48"	2'-5"	1'-2 1/2"

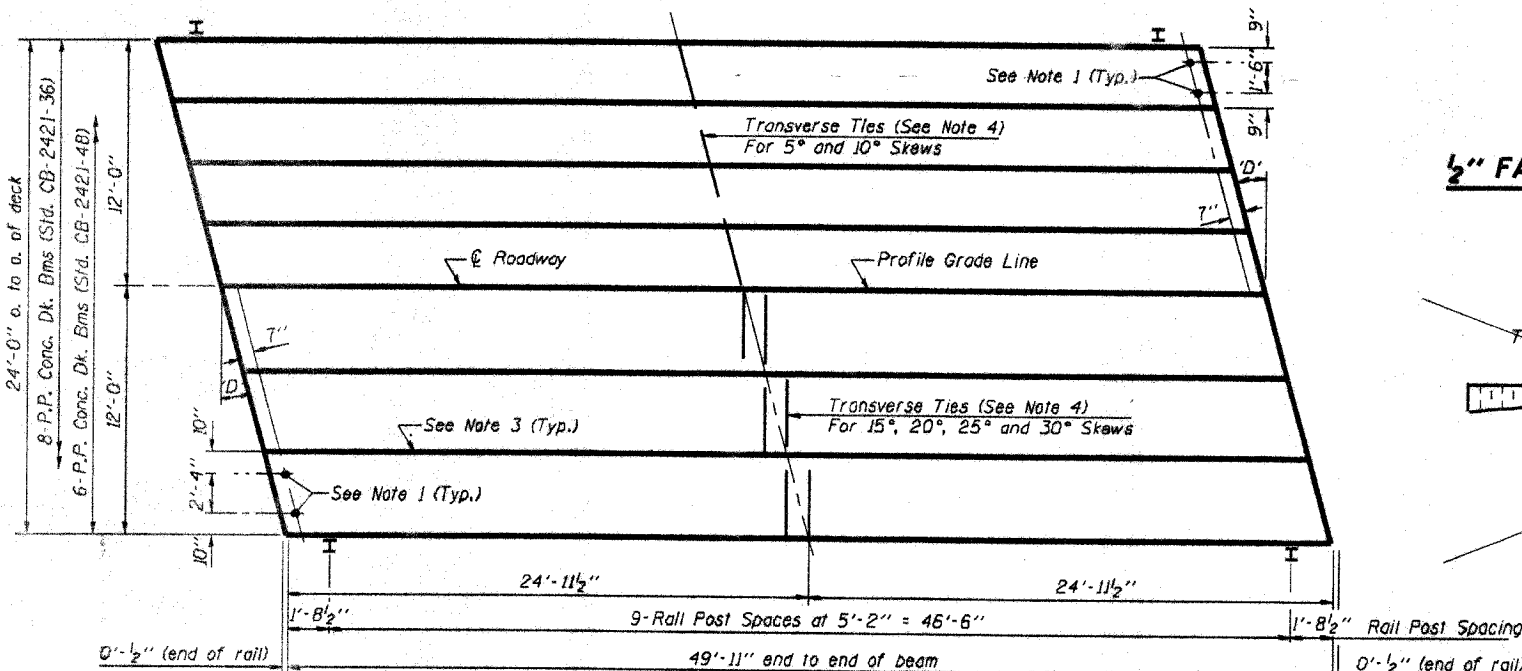
**1/2" FABRIC BRG. PAD DETAILS**



**CROSS SECTION**

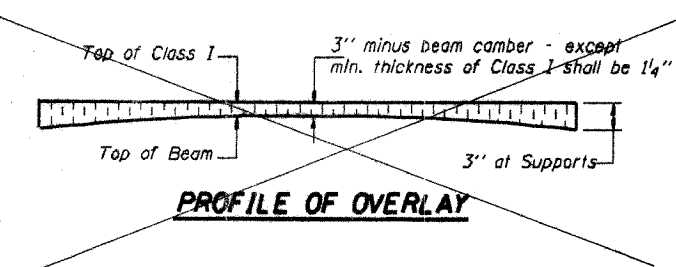


**CROSS SECTION**



**PLAN**

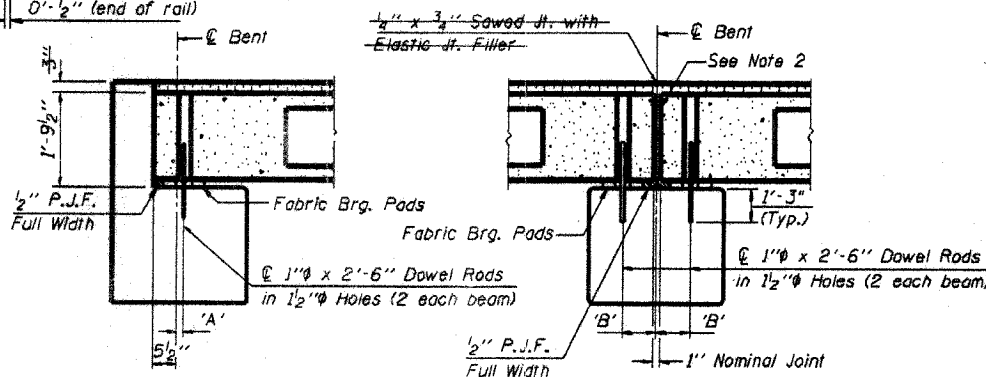
('D' = Designated Skew Angle)



**PROFILE OF OVERLAY**

**DIMENSIONS 'A' AND 'B'**

'D'	5°	10°	15°	20°	25°	30°
A	1 1/2"	1 5/8"	1 3/4"	1 7/8"	2 1/8"	2 3/8"
B	7 1/2"	7 5/8"	7 3/4"	8"	8 1/4"	8 3/8"



**SECTION AT ABUTS.**

(Along centerline of Beams)

**SECTION AT PIERS**

(Along centerline of Beams)

**QUANTITIES FOR ONE SPAN**

P.P. Conc. Dk. Bms. 21" Dp.	1200 Sq. Ft.
Steel Railing	100 Ft.
Bit. Conc. Surf. Cse. Class I	15.0 Tons
Waterproofing Membrane System	133.3 Sq. Yds.

**P.P.C. DECK BEAM SUPERSTRUCTURE**

**24' RDWY. 21" BMS. 50' SPAN RIGHT**

**STANDARD CS-2421-50R**

**NOTES**

- After beams have been erected, holes shall be drilled into substructure and anchor dowels placed. Dowel holes shall be filled with non-shrink grout to top of beam and allowed to cure min. 24 hrs. prior to grouting the shear keys.
- Nominal 1" joint at centerline of Pier shall be filled with non-shrink grout.
- Longitudinal keys shall be grouted.
- The 1" diameter rods in the transverse tie assembly shall be tightened to a snug fit and the threads set. Pockets that receive transverse tie bar outside shall be filled with grout after transverse tie assembly is in place.

Illinois Department of Transportation

PASSED NOVEMBER 1, 1995

Engineer of Bridge Design

APPROVED NOVEMBER 1, 1995

Engineer of Bridges and Structures