

FAS RTE	SECTION	COUNTY	TOTAL SHEETS	SHEET NO.
•	••	•••	••••	•

• FAS 2882 (IL 37)/FAS 903
 •• D9 CONT. MAINT. FY 07-5
 ••• FRANKLIN & WILLIAMSON

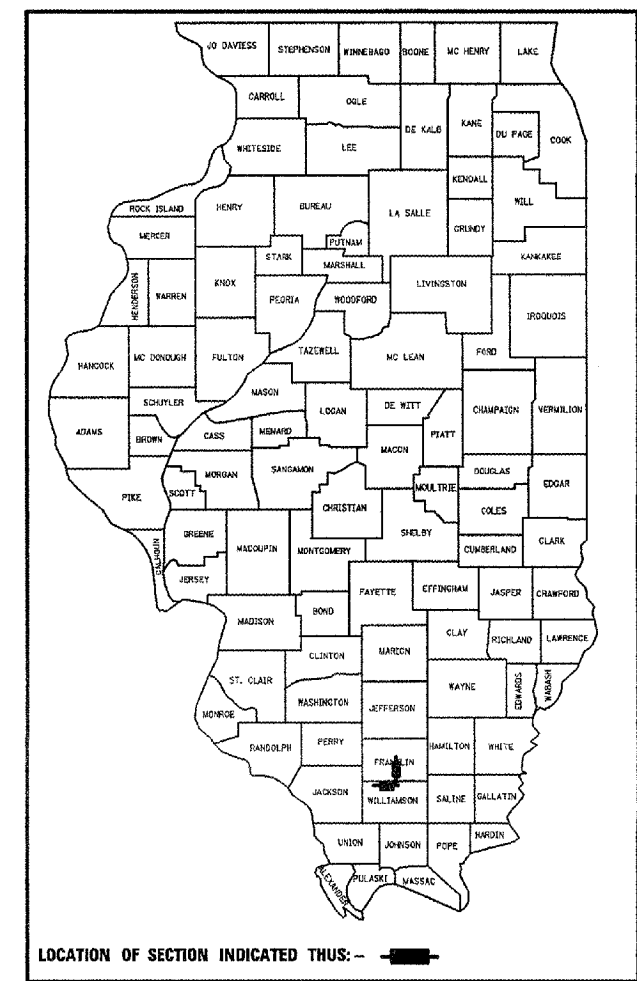
STATE OF ILLINOIS
 DEPARTMENT OF TRANSPORTATION
 DIVISION OF HIGHWAYS

**PROPOSED
 HIGHWAY PLANS**

FAS 2882 (ILL. 37) & FAS ROUTE 903
 SECTION D9 CONT. MAINT. FY 07-5
PROJECT
 FRANKLIN AND WILLIAMSON COUNTIES

C-99-046-06

D-99-037-06



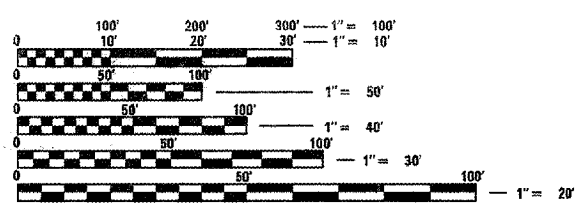
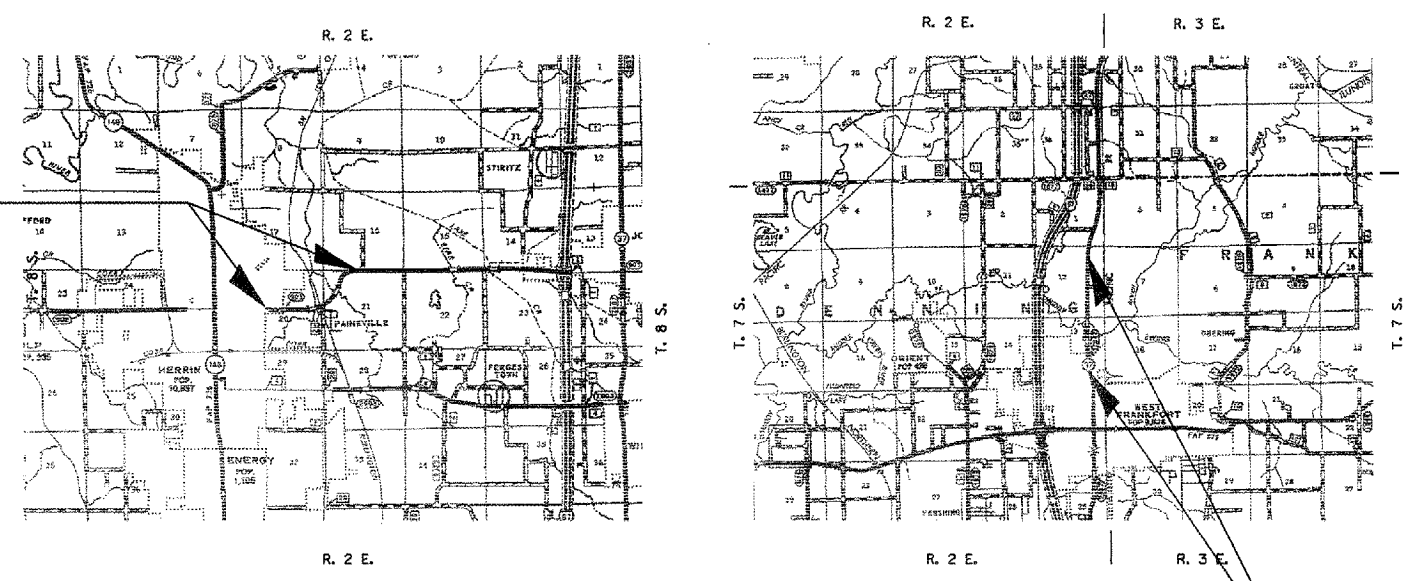
FOR INDEX OF SHEETS, SEE SHEET NO. 2

ADT:
 LOCATION 1 - FAS 903 (2006)
 ADT = 5254
 PV= 5254
 SU= 248
 MU= 179
 TRUCK = 8%
 LOCATION 2 - IL 37 (2006)
 ADT = 4532
 PV= 4197
 SU= 263
 MU= 72
 TRUCK= 7%

EQUATION STATIONS:
 LOCATION 1 -
 STA. -0+29.80 (BK.) TO STA. 0+00 (AH.)
 LOCATION 2 -
 STA. 268+78 (BK.) = STA. 0+00 (AH.)

LOCATION 1 - FAS 903 EAST OF HERRIN
 STA. -0+29.80 TO STA. 75+30
 1.39 MILES

TOWNSHIPS: HERRIN AND FRANKFORT



FULL SIZE PLANS HAVE BEEN PREPARED USING STANDARD ENGINEERING SCALES. REDUCED SIZED PLANS WILL NOT CONFORM TO STANDARD SCALES. IN MAKING MEASUREMENTS ON REDUCED PLANS, THE ABOVE SCALES MAY BE USED.

J.U.L.I.E.
 JOINT UTILITY LOCATION INFORMATION FOR EXCAVATION
 1-800-892-0123

LOCATION 2 - FAS 2882 (IL 37) NORTH OF WEST FRANKFORT
 STA. 178+97 TO STA. 268+78
 STA. 0+00 TO STA. 18+31 - 1.98 MILES

LENGTH OF PROJECT = 17,803 FT. = 3.37 MILES

CONTRACT NO. 98979

STATE OF ILLINOIS
 DEPARTMENT OF TRANSPORTATION
 DIVISION OF HIGHWAYS

SUBMITTED May 9, 2006
Mike C. Rami
 DEPUTY DIRECTOR OF HIGHWAYS, REGION ENGINEER

June 30, 2006
Mike Sine
 ENGINEER OF DESIGN AND ENVIRONMENT

June 30, 2006
Milton R. Sues, P.E.
 DIRECTOR OF HIGHWAYS, CHIEF ENGINEER

**PRINTED BY THE AUTHORITY
 OF THE STATE OF ILLINOIS**

PROJECT ENGINEER: CHARLES STEIN - (618)351-5210
 DESIGN TECHNICIAN: KATHI MCCORD - (618)351-5216