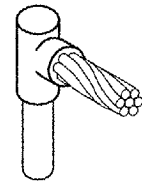
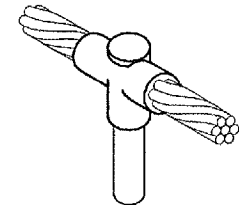


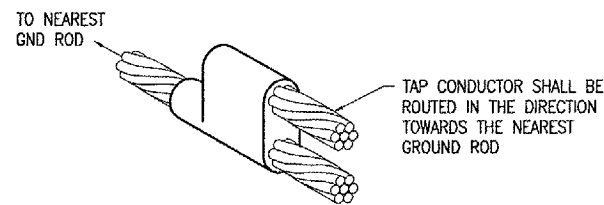
CABLE TO GROUND ROD



CABLE TO GROUND ROD



CABLE TO GROUND ROD

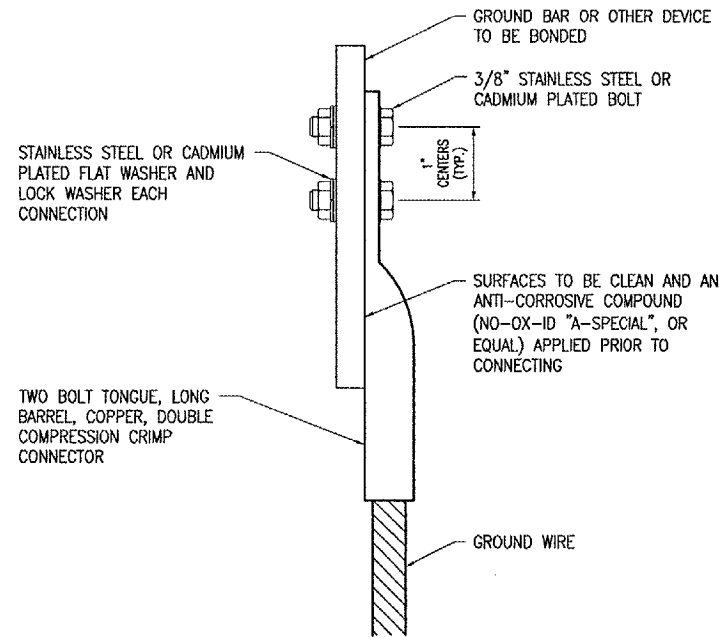


**CABLE TO CABLE
HORIZONTAL PARALLEL TAP**

DETAIL NOTES

- EXOTHERMIC WELDS SHALL BE CADWELD AS MANUFACTURED BY ERICO PRODUCTS, SOLON, OHIO OR THERMOWELD AS MANUFACTURED BY CONTINENTAL INDUSTRIES, TULSA, OKLAHOMA. VERIFY PROPER SIZES, TYPES, AND REQUIREMENTS FOR THE RESPECTIVE APPLICATION WITH THE MANUFACTURER, AND INSTALL PER THEIR DIRECTIONS.
- FOR APPLICATIONS TO METAL SURFACES THAT ARE LESS THAN 3/16" THICK CONTACT THE EXOTHERMIC WELD MANUFACTURER FOR DIRECTION AND INSTRUCTION ON EXOTHERMIC WELD INSTALLATION TO THE RESPECTIVE SURFACE.
- FOR APPLICATIONS TO GALVANIZED STEEL OR PAINTED STEEL, REMOVE GALVANIZING AND/OR PAINT & CLEAN THE SURFACE TO EXPOSE BARE STEEL BEFORE MAKING EXOTHERMIC WELD CONNECTION.
- INDIVIDUAL GROUNDING ELECTRODE CONDUCTORS SHALL NOT BE INSTALLED IN METAL CONDUIT. INSTALL GROUNDING ELECTRODE CONDUCTORS IN SCHED 40 PVC CONDUIT AS REQUIRED IN FOUNDATIONS, FOR PROTECTION, WHERE ENTERING ENCLOSURES, ETC.

EXOTHERMIC WELD DETAILS

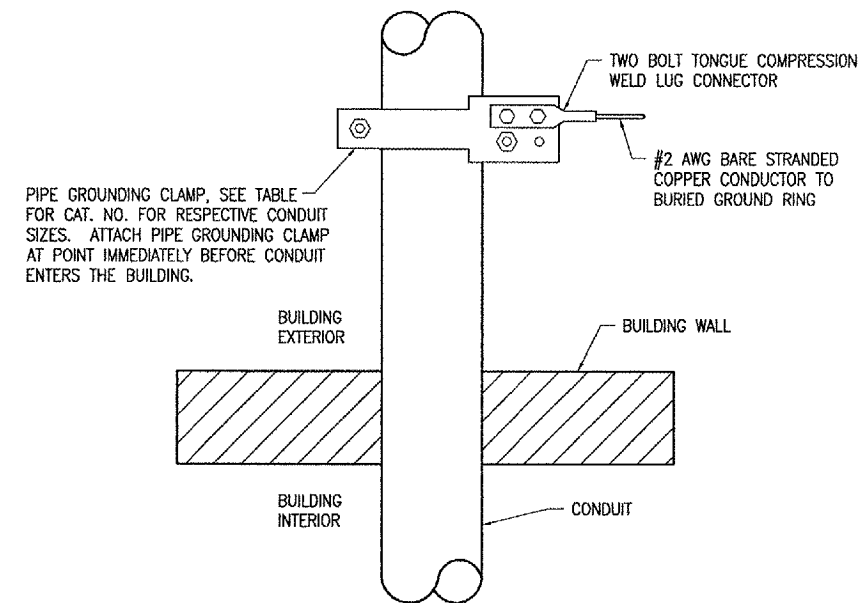


2 HOLE LONG BARREL COMPRESSION LUG TABLE		
WIRE SIZE	BURNDY CAT. NO.	THOMAS & BETTS CAT. NO.
#6 AWG STRANDED	YA6C-2TC38	256-30695-1158
#4 AWG STRANDED	YA4C-2TC38	256-30695-1159
#2 AWG STRANDED	YA2C-2TC38	256-30695-1160
#2 AWG SOLID	YA3C-2TC38	256-30695-1160
#1/0 AWG STRANDED	YA25-2TC38	256-30695-1162
#2/0 AWG STRANDED	YA26-2TC38	256-30695-1116
#3/0 AWG STRANDED	YA27-2TC38	54816BE

NOTES

- ALL CONNECTIONS TO GROUND BUS BAR SHALL BE WITH 2 HOLE TONGUE LONG BARREL COMPRESSION LUGS BOLTED TO THE BUS BAR.
- GROUND WIRE CONNECTIONS TO EQUIPMENT SHALL BE WITH 2 HOLE TONGUE LONG BARREL COMPRESSION LUGS BOLTED TO THE DEVICE OR WITH THE RESPECTIVE EQUIPT MANUFACTURER'S LUG OR TERMINAL WHERE APPLICABLE.
- GROUNDING ELECTRODE CONDUCTORS, BONDING JUMPERS, & INDIVIDUAL GROUND WIRES SHALL NOT BE INSTALLED IN METAL CONDUIT.
- ALL CONNECTIONS SHALL BE COATED WITH A CORROSION PREVENTATIVE COMPOUND (SANCHEM INC. NO-OX-ID 'A-SPECIAL', BURNDY PENETROX E, OR EQUAL) BEFORE JOINING. ALL COPPER BUS BARS SHALL BE CLEANED PRIOR TO MAKING CONNECTIONS TO REMOVE SURFACE OXIDATION. CLEAN SURFACES, OF RESPECTIVE DEVICES TO BE BONDED, TO BARE METAL, PER NEC 250-12.

GROUNDING LUG CONNECTION DETAIL



PIPE GROUNDING CLAMP TABLE	
BURNDY CAT. NO.	CONDUIT SIZE
GAR3902TC	1/2" - 1"
GAR3903TC	1 1/4" - 2"
GAR3904TC	2 1/2" - 3 1/2"
GAR3905TC	4" - 5"
GAR3906TC	6"
GAR3907TC	8"

NOTES

- EXTERIOR CONDUIT GROUNDING IS REQUIRED FOR THE PHOTOCELL CONDUIT, RADIO ANTENNA CONDUIT, & OTHER CONDUITS EXTENDING TO THE ROOF LEVEL.
- CONNECTIONS TO GROUND RING SHALL BE EXOTHERMIC WELD.

EXTERIOR CONDUIT GROUNDING DETAIL

DIO22



815 Commerce Drive Suite 200
Oak Brook, Illinois 60523
Telephone: 630.990.3800
Fax: 630.990.3801



CITY OF DIXON, ILLINOIS
Post Office Box 386
Dixon, Illinois 61021
Telephone: 815.288.1485

DIXON MUNICIPAL AIRPORT
CHARLES R. WALGREEN FIELD

CONSTRUCT REPLACEMENT
AIRFIELD ELECTRICAL VAULT

AIP PROJECT NO. 3-17-0036-B8
IDA PROJECT NO. C73-3548

No.	Drawing Issue Description	Date	By

Date
JUNE 23, 2006
Sheet Title

GROUNDING DETAILS

843-05C8010
Project Number
KNL 03/02/05
Layout By Date
KNL 03/02/05
Designed By Date
RMH 06/23/06
Reviewed By Date
MV
Drawn By Sheet No. SHEET 22 OF 36

E8