

REVISIONS		
NUMBER	BY	DATE

0 1 2
THIS BAR IS EQUAL TO 2"
AT FULL SCALE (34X22).
PLOT 1

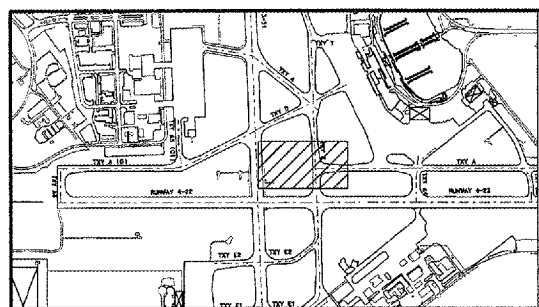
CURVE	POINT	STATION	OFFSET	COORDINATES		CURVE ELEMENTS
				NORTHING	EASTING	
A3	PC	250+49.34	164.57' RT	1454937.87	2428693.23	RADIUS-125.00' LENGTH-189.92' DELTA-87° 03' 15.84"
	RP	249+24.51	171.00' RT	1455039.82	2428765.56	
	PT	249+24.51	46.00 RT	1454962.34	2428663.66	
A4	PC	250+37.25	166.80' LT	1454741.81	2428960.79	RADIUS-125.00' LENGTH-199.91' DELTA-91° 37' 49.44"
	RP	249+12.32	162.50' LT	1454842.68	2429034.84	
	PT	249+13.07	37.50' LT	1454919.57	2428936.28	
A5	PC	245+04.68	58.18' RT	1455299.58	2429114.48	RADIUS-95.00' LENGTH-149.23' DELTA-90° 00' 02.88"
	RP	245+04.68	153.18 RT	1455358.24	2429039.76	
	PT	244+09.68	153.18 RT	145432.80	2429098.64	
A6	PC	244+00.36	148.67' LT	1455253.03	2429341.29	RADIUS-95.00' LENGTH-146.02' DELTA-88° 03' 53.28"
	RP	244+95.31	151.88' LT	1455176.53	2429254.96	
	PT	244+95.31	56.88' LT	1455235.41	2429210.41	

STA. 244+00.33
OFF. 403.69' RT.
N: 1455595.40
E: 2428907.84

STA. 246+51.80
OFF. 46.00' RT.
N: 1455176.36
E: 2429032.68

STA. 247+45.32
OFF. 37.50' LT.
N: 1455051.22
E: 2429040.25

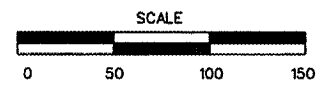
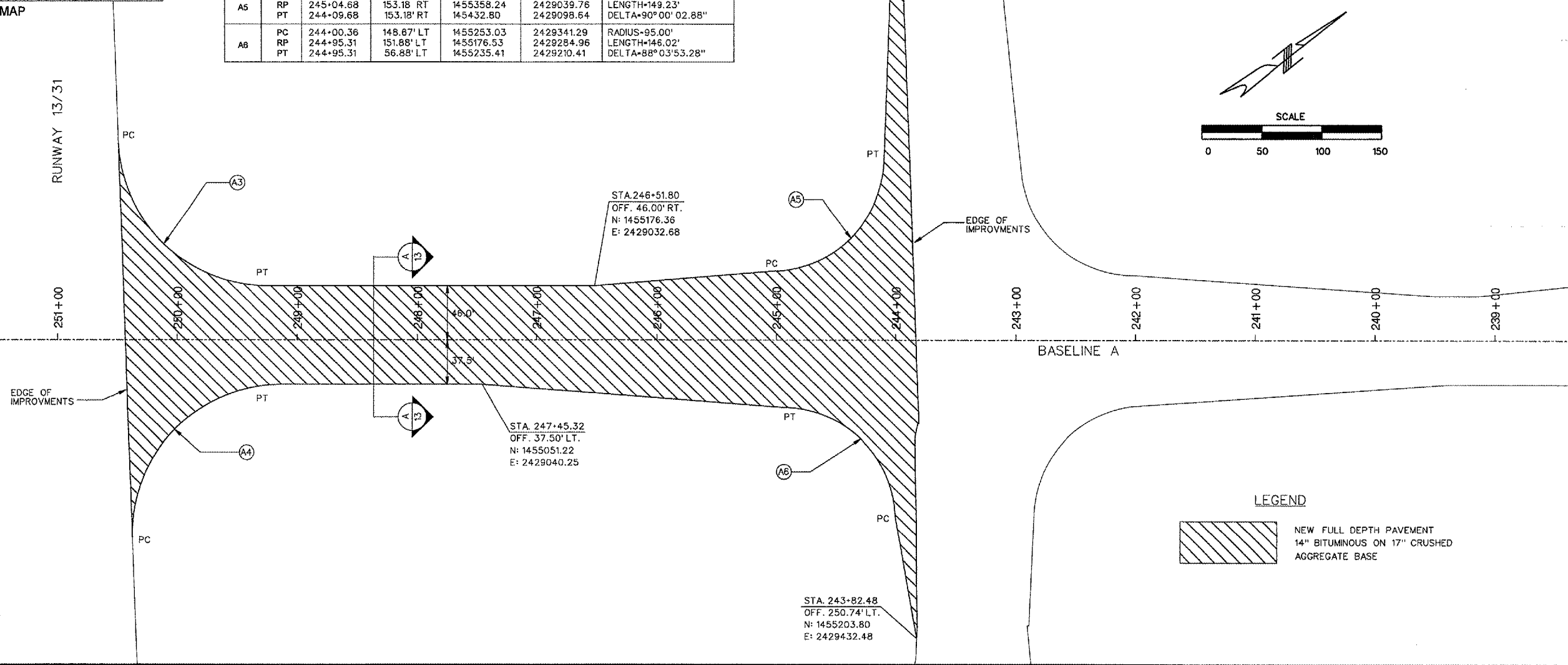
STA. 243+82.48
OFF. 250.74' LT.
N: 1455203.80
E: 2429432.48



KEY MAP

MATCHLINE STA. 251+50

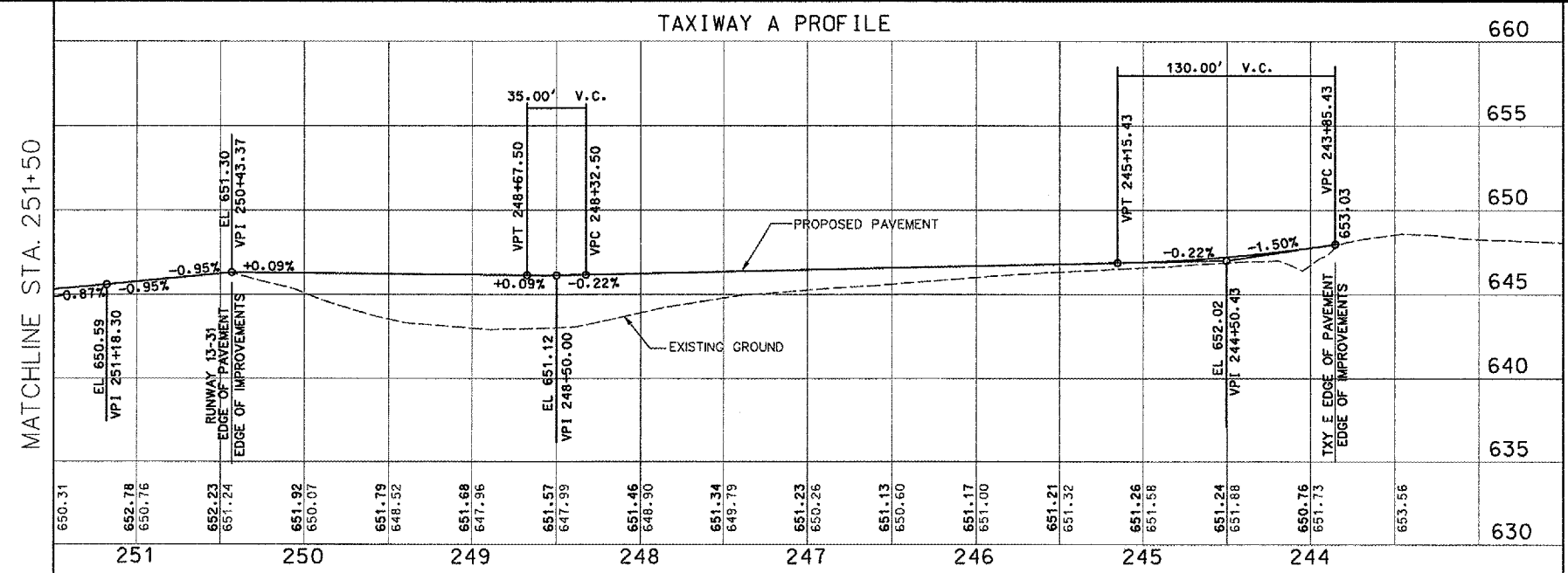
RUNWAY 13/31



LEGEND

NEW FULL DEPTH PAVEMENT
14" BITUMINOUS ON 17" CRUSHED
AGGREGATE BASE

TAXIWAY A PROFILE



GREATER Peoria REGIONAL Airport

CMT
CRAWFORD, MURPHY & TILLY, INC.
CONSULTING ENGINEERS

RELOCATE TAXIWAYS A AND D FROM
MID-FIELD INTERSECTION PHASE 2

IL PROJECT: PIA-3616
AIP PROJ: 3-17-0080-XX

FILE: ...015_pp_2_of_3.dgn

DESIGN BY: TCS

DRAWN BY: CAG

CHECKED BY: TCS

APPROVED BY: CET

DATE: MAY 12, 2006

JOB No: 04061-03-03

PLAN AND PROFILE
SHEET 5 OF 5

SHEET 23 OF 107 SHEETS

7/13/2006 k:\peoria\0406103_03\draw\sheet\015_pp_2_of_3.dgn