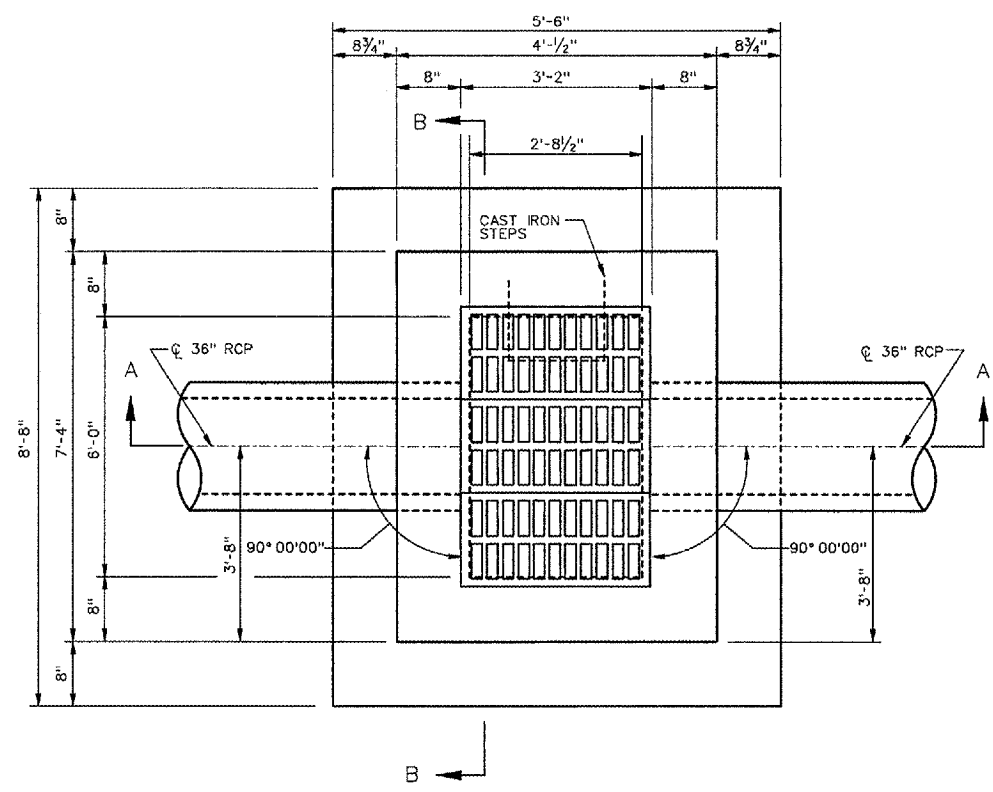
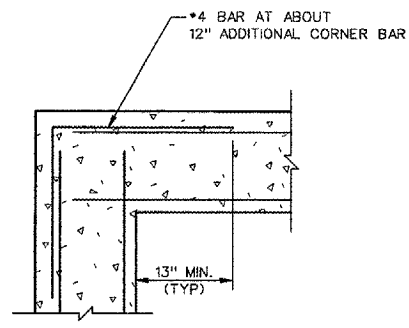


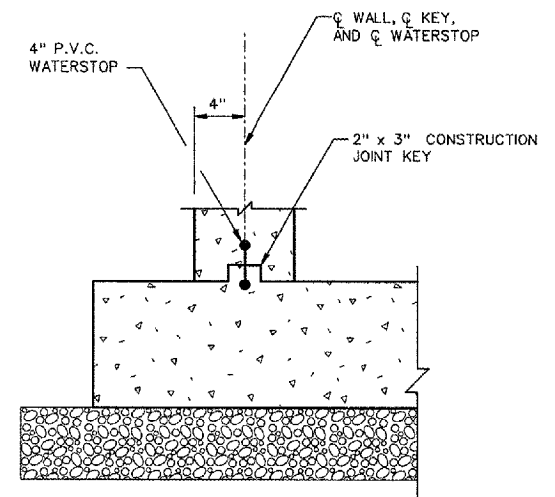
PE085		
REVISIONS		
NUMBER	BY	DATE



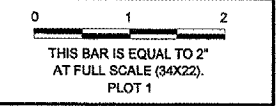
PLAN  
INLET 16



PLAN  
TYPICAL WALL CORNER DETAIL



DETAIL A  
NOTE: REINFORCEMENT NOT SHOWN FOR CLARITY



GREATER Peoria REGIONAL Airport

RELOCATE TAXIWAY A AND D FROM MID-FIELD INTERSECTION PHASE 2

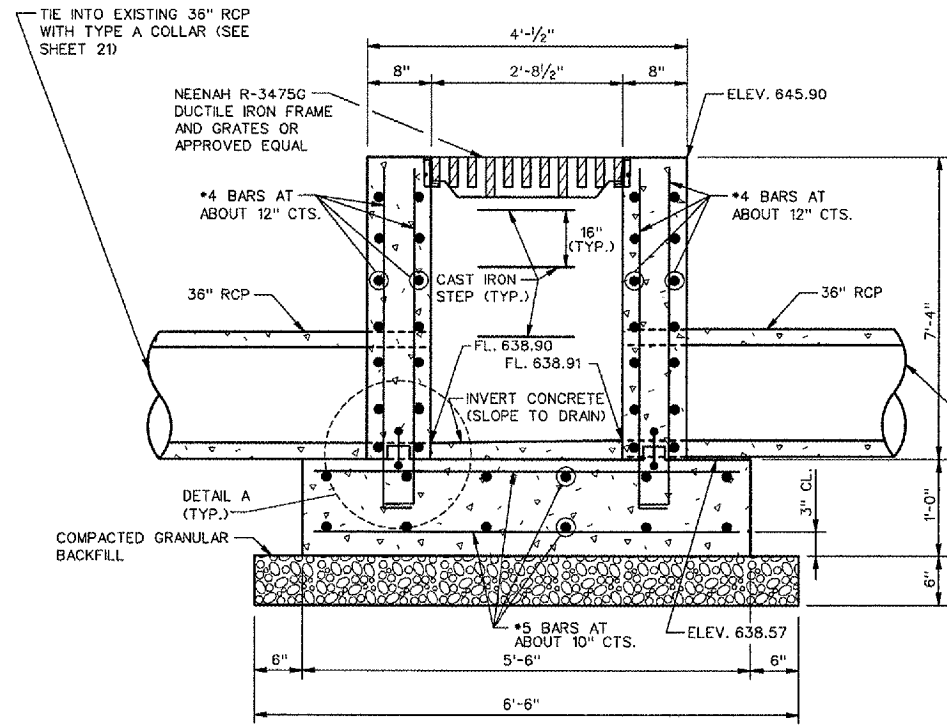
CMT  
CRAWFORD, MURPHY & TILLY, INC.  
CONSULTING ENGINEERS

IL PROJECT: PIA-3616  
AIP PROJ: 3-17-0080-XX

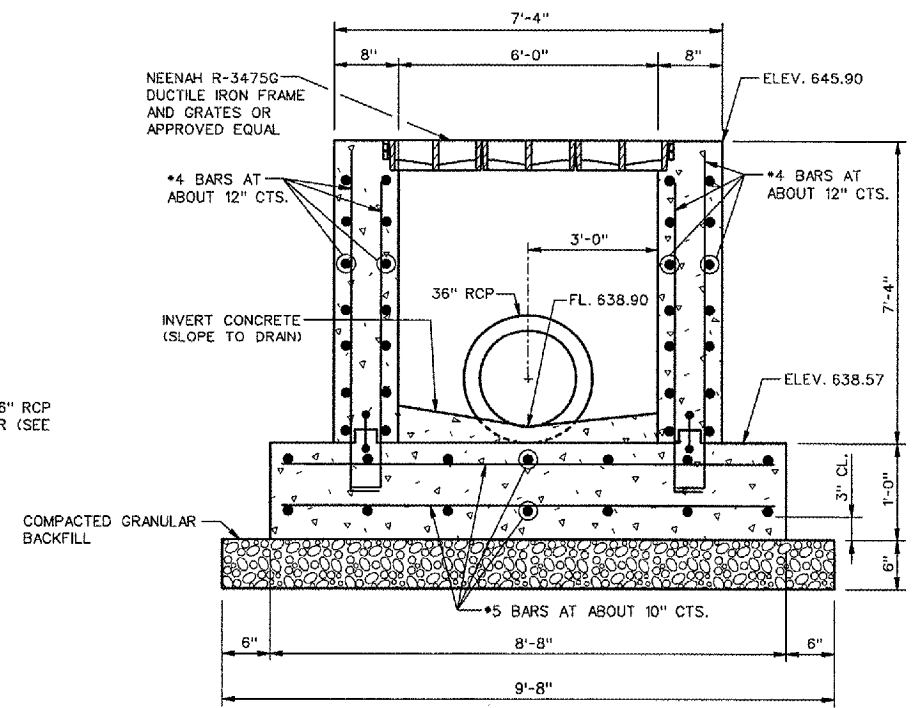
FILE: ...1046\_drainage\_details\_7.dgn  
DESIGN BY: TCS  
DRAWN BY: CAG  
CHECKED BY: TCS  
APPROVED BY: CET  
DATE: JUNE 30, 2006  
JOB No: 04061-03-02

DRAINAGE DETAILS  
SHEET 5 OF 8

SHEET 46 OF 107 SHEETS



SECTION A-A



SECTION B-B

- NOTES:
1. CAST IN PLACE CONCRETE SHALL HAVE A MINIMUM 28 DAY COMPRESSIVE STRENGTH OF 3000 PSI.
  2. ALL REINFORCEMENT SHALL BE ASTM A615 GRADE 60.
  3. REINFORCING BARS SHALL BE CUT AND/OR BENT AT ALL OPENINGS TO MAINTAIN 1" CLEARANCE FROM PIPES.
  4. MINIMUM CLEARANCE TO REINFORCING STEEL SHALL BE 1/2" UNLESS OTHERWISE SHOWN.
  5. THE CONTRACTOR SHALL FIELD VERIFY ALL EXISTING PIPE SIZES AND ELEVATIONS PRIOR TO CONSTRUCTION/INSTALLATION OF DRAINAGE STRUCTURES.
  6. PIPE SECTIONS TO TIE EXISTING RCP TO PROPOSED INLET SHALL NOT BE MEASURED FOR PAYMENT AND SHALL BE CONSIDERED INCIDENTAL TO THE COST OF THE INLET.
  7. ALL CONCRETE WORK SHALL CONFORM TO ACI-318-02.

NOTE: THIS DRAWING IS NOT TO SCALE. FOLLOW DIMENSIONS.

7/13/2006 k:\peoria\040610302\draw\sheets\046\_drainage\_details\_7.dgn