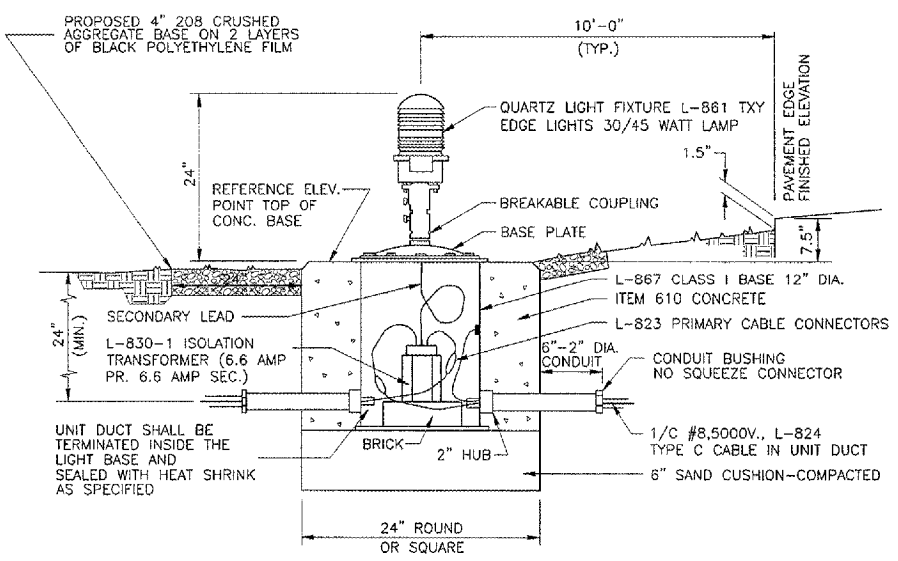
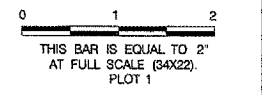
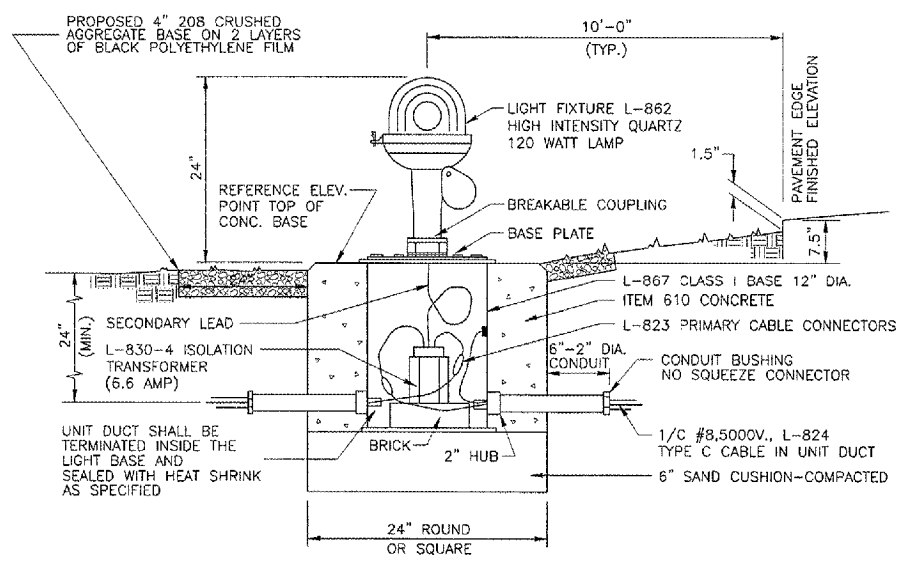


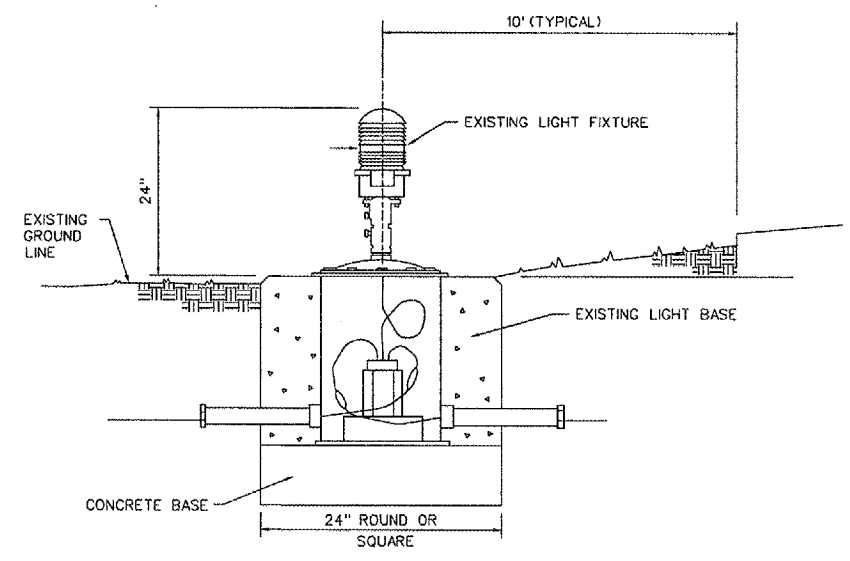
PE085		
REVISIONS		
NUMBER	BY	DATE



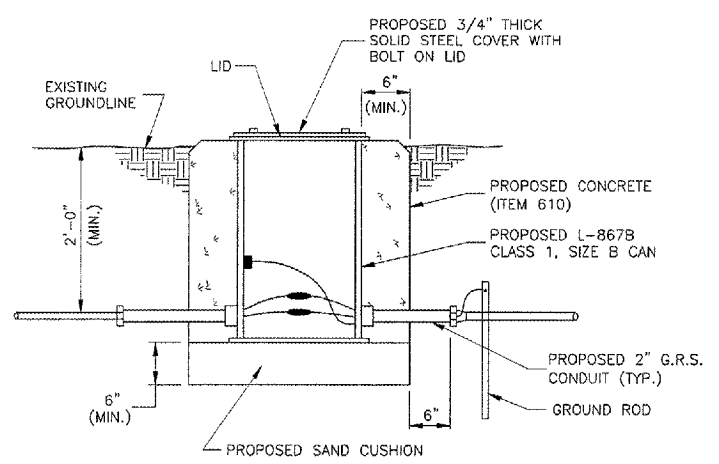
PROPOSED BASE MOUNTED TAXIWAY MEDIUM INTENSITY LIGHT
N.T.S.



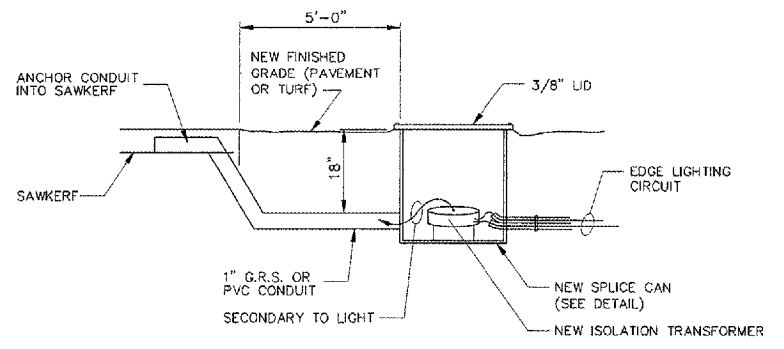
PROPOSED BASE MOUNTED HIGH INTENSITY RUNWAY LIGHT
N.T.S.



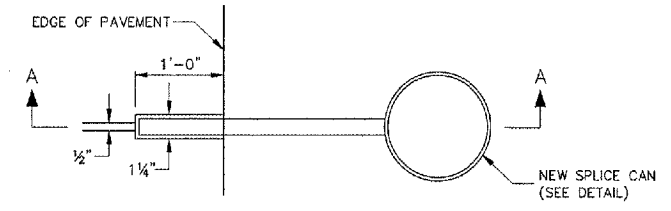
EXISTING BASE MOUNTED MARKER LIGHTS TO BE REMOVED
N.T.S.



SPLICE CAN DETAIL
N.T.S.

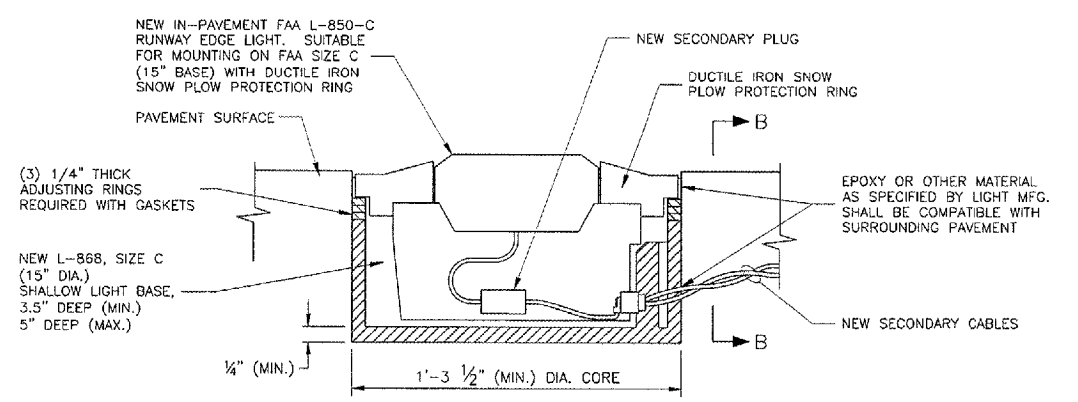


SECTION A-A

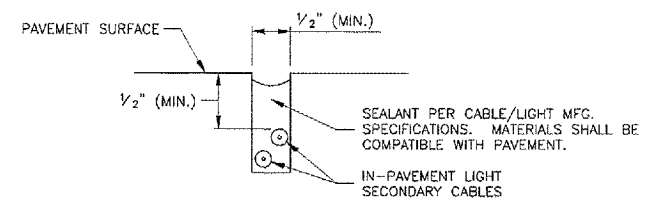


PLAN

SPLICE CAN LOCATION FOR IN-PAVEMENT RUNWAY EDGE LIGHT DETAIL
N.T.S.



NEW IN-PAVEMENT LIGHT DETAIL
N.T.S.



SAWKERF DETAIL (SECTION B-B)
N.T.S.

SAWKERF SHALL UTILIZE PAVEMENT JOINTS WHERE APPLICABLE. SAW KERF LOCATION SHALL BE APPROVED BY THE AIRPORT PRIOR TO START OF INSTALLATION OPERATIONS.



RELOCATE TAXIWAYS A AND D FROM MID-FIELD INTERSECTION PHASE 2



IL PROJECT: PIA-3616
AIP PROJ: 3-17-0080-XX
FILE: ...Sheets\036_Elect_Details_3.dgn
DESIGN BY: TCS
DRAWN BY: CAG
CHECKED BY: TCS
APPROVED BY: CET
DATE: JUNE 30, 2006
JOB No: 04061-03-03

ELECTRICAL DETAILS SHEET 4 OF 4
SHEET 66 OF 116 SHEETS

7/13/2006 K:\Peoria\0406103_03\Draw\Sheets\036_Elect_Details_3.dgn