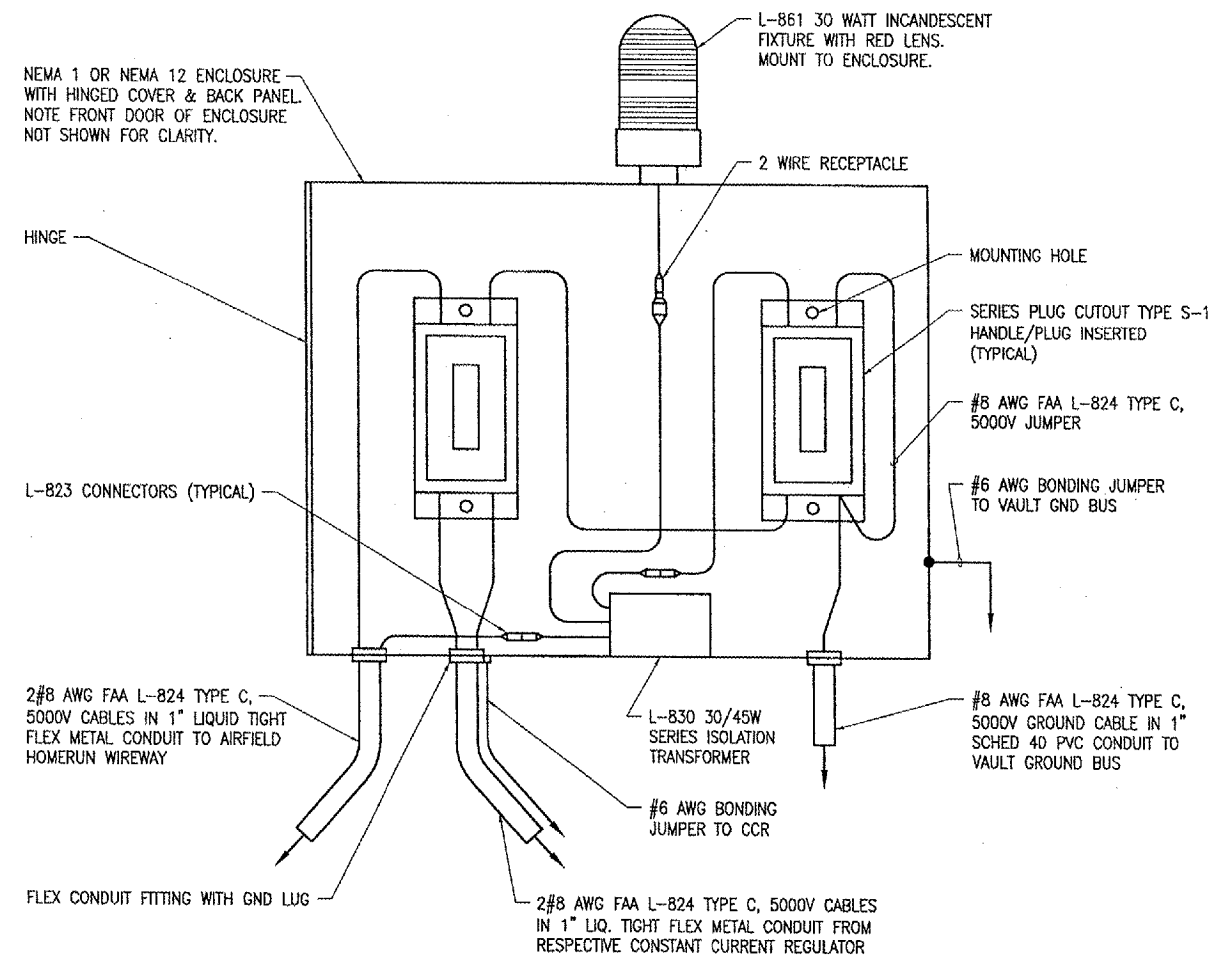


CCR CONTROL SCHEMATIC FOR SUPPLEMENTAL LIGHTED WIND CONES

NOTES

1. ALL VAULT WORK, AIRFIELD WORK, AND/OR POWER OUTAGES SHALL BE COORDINATED WITH THE AIRPORT DIRECTOR.
2. ALL ELECTRICAL EQUIPMENT SHALL BE INSTALLED IN CONFORMANCE WITH NFPA 70 (NEC MOST CURRENT ISSUE IN FORCE), THE RESPECTIVE EQUIPMENT MANUFACTURER'S DIRECTIONS AND ALL OTHER APPLICABLE LOCAL CODES, LAWS, ORDINANCES AND REQUIREMENTS IN FORCE. ANY INSTALLATIONS WHICH VOID THE U.L. LISTING, ETL LISTING, (OR OTHER THIRD PARTY LISTING) AND/OR THE MANUFACTURER'S WARRANTY OF A DEVICE SHALL NOT BE PERMITTED.
3. ALL CONTROL CABLE SHALL BE NO. 12 AWG, 600 VOLT CABLE.
4. ALL ELECTRICAL EQUIPMENT SHALL BE PROPERLY LABELED AND ALL ELECTRICAL CABLES SHALL BE TAGGED.
5. ALL ELECTRICAL CABLES INSIDE THE VAULT SHALL BE IN CONDUIT OR WIREWAY. LOW VOLTAGE CABLES SHALL NOT BE INSTALLED IN THE SAME CONDUIT, DUCT, OR RACEWAY AS HIGH VOLTAGE CABLE.
6. THE SUPPLEMENTAL WIND CONES & RESPECTIVE CCR SHALL BE ACTIVATED TO 100% BRIGHTNESS LEVEL BY A PHOTOCELL IN THE AUTOMATIC MODE OF OPERATION. THE SUPPLEMENTAL WIND CONES SHALL BE ACTIVATED BY THE CONSTANT CURRENT REGULATOR SELECTOR SWITCH (100% BRIGHTNESS LEVEL POSITION) IN THE MANUAL MODE OF OPERATION. CONFIRM CONTROL WIRING REQUIREMENTS WITH THE RESPECTIVE CCR MFR INSTALLATION INSTRUCTIONS FOR PROPER OPERATION.
7. EQUIPMENT GROUND WIRES SHALL BE INCLUDED WITH EACH BRANCH CIRCUIT & EACH CONTROL CIRCUIT.
8. "N" DENOTES NEUTRAL FOR RESPECTIVE BRANCH CIRCUIT OR CONTROL CIRCUIT.



SERIES PLUG CUTOUT MOUNTING DETAIL FOR WIND CONE LIGHTING CIRCUIT

NOTES

1. PLUG CUTOUT CABINET SHALL BE FURNISHED WITH A PHENOLIC ENGRAVED LEGEND PLATE THAT IDENTIFIES THE RESPECTIVE CIRCUIT OR REGULATOR AND THE VOLTAGE SYSTEM (5000 VOLTS). INCLUDE AN ADDITIONAL LEGEND PLATE LABELED "CAUTION OPERATE S1 HANDLES WITH LOAD DE-ENERGIZED".
2. PROVIDE PHENOLIC ENGRAVED LEGEND PLATES FOR EACH CUTOUT TO IDENTIFY THE FUNCTION OF EACH RESPECTIVE CUTOUT.
3. LIQUID TIGHT FLEXIBLE METAL CONDUIT AND ASSOCIATED FITTINGS SHALL BE U.L. LISTED TO MEET THE REQUIREMENTS OF NEC 350.6, SUITABLE FOR GROUNDING AND SUNLIGHT RESISTANT. LIQUID TIGHT FLEXIBLE METAL CONDUIT THAT IS USED FOR FLEXIBILITY (INCLUDING CONNECTIONS TO CCR'S & TRANSFORMERS) SHALL REQUIRE AN EXTERNAL BONDING JUMPER OR INTERNAL EQUIPMENT GROUNDING CONDUCTOR PER NEC 350.60. EXTERNAL BONDING JUMPERS USED WITH CCR INSTALLATIONS SHALL BE #6 AWG COPPER (MINIMUM). DO NOT INSTALL LIQUID TIGHT FLEXIBLE METAL CONDUIT THAT IS NOT U.L. LISTED.

BY	
REVISION	
DATE	

QUINCY REGIONAL AIRPORT
BALDWIN FIELD
ADAMS COUNTY, ILLINOIS

QUINCY Regional Airport
Adams County, Illinois

ILL. PROJ.: UIN-3618 A.I.P. PROJ.: 3-17-0085-XX

Proj. No.	824-06SWCD_0240
Drawn	E-603.DWG
State	NONE
Date	05/19/06
LAYOUT	KNL 05/16/06
DRAWN	MV 05/16/06
REVIEWED	CAH 05/18/06

HANSON

Hanson Professional Services Inc.
1525 South Sixth Street
Springfield, Illinois 62703-2886
Offices Nationwide

INSTALL WIND CONES
PROPOSED WIND CONE CONTROL SCHEMATIC

JUN 29, 2006 3:20 PM BAK
I:\AIRPORTS\QUINCY\824-06SWC\AIRPORT\SHEETS\E-603.DWG - Layout1