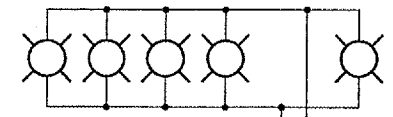
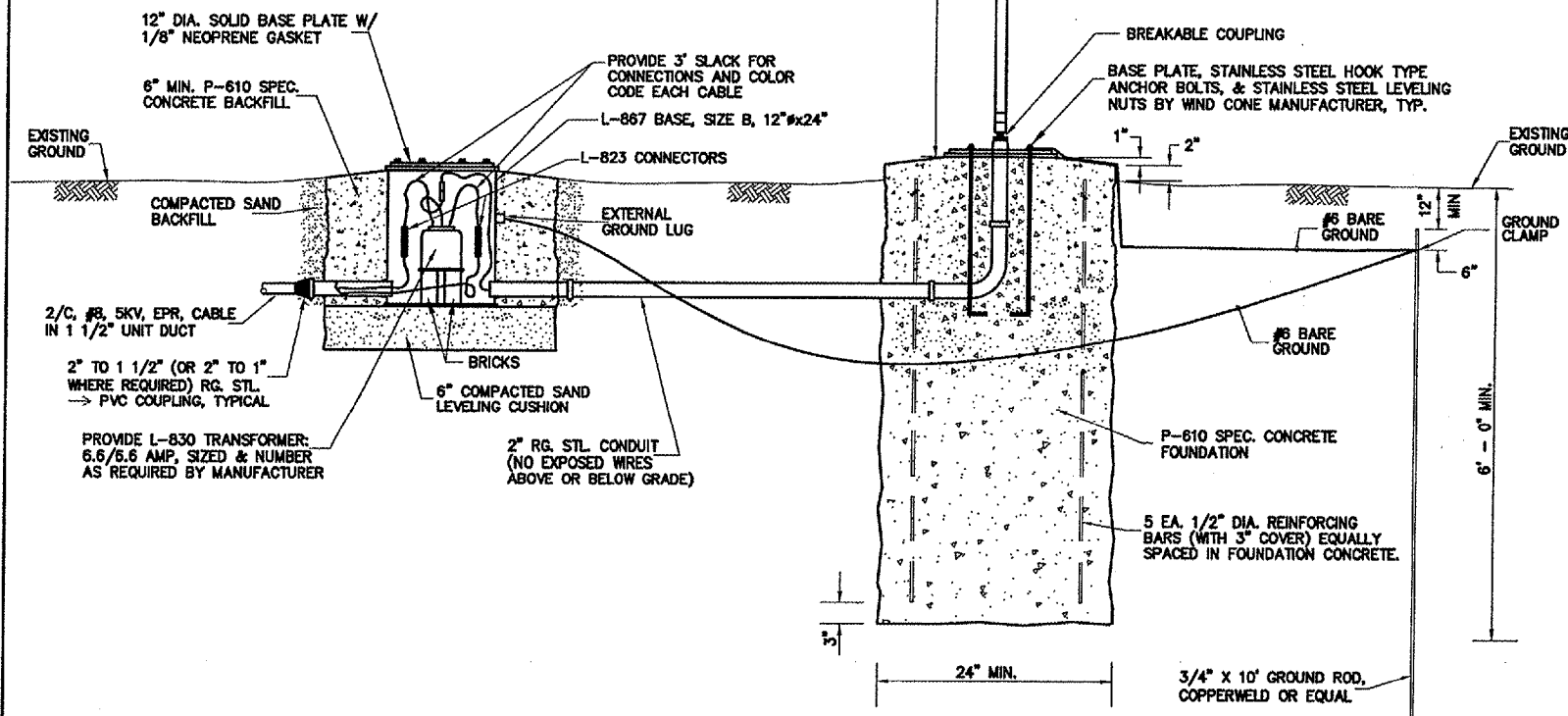
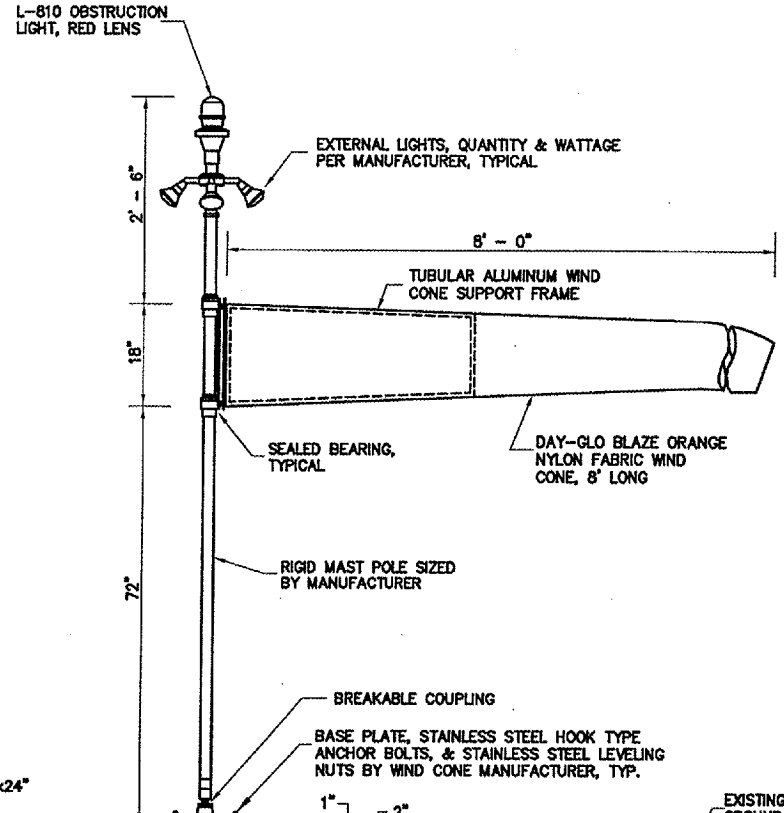


L-810 OBSTRUCTION LIGHT, WATTAGE PER MANUFACTURER



EXTERNAL LIGHTS, QUANTITY AND WATTAGE PER MANUFACTURER
 6.6 AMP RUNWAY SERIES CIRCUIT

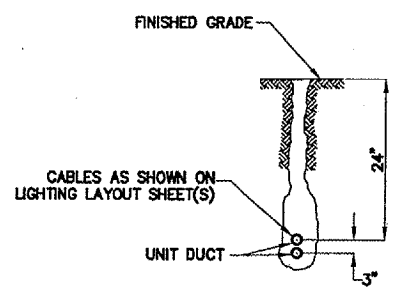
WIRING DIAGRAM



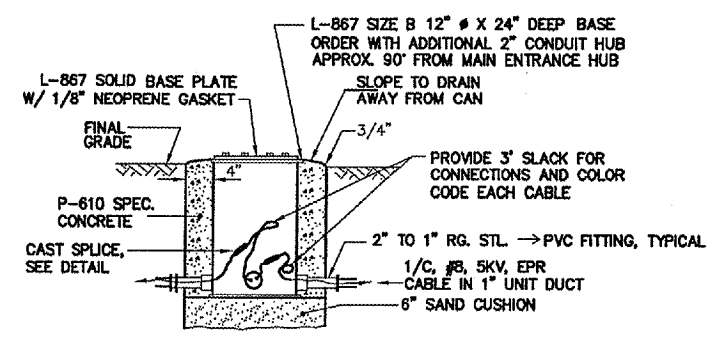
- NOTES:
- BREAKING GROOVE OF BREAKABLE COUPLING SHALL BE 3" TO 3 1/2" ABOVE FINISHED GRADE.

PROFILE VIEW

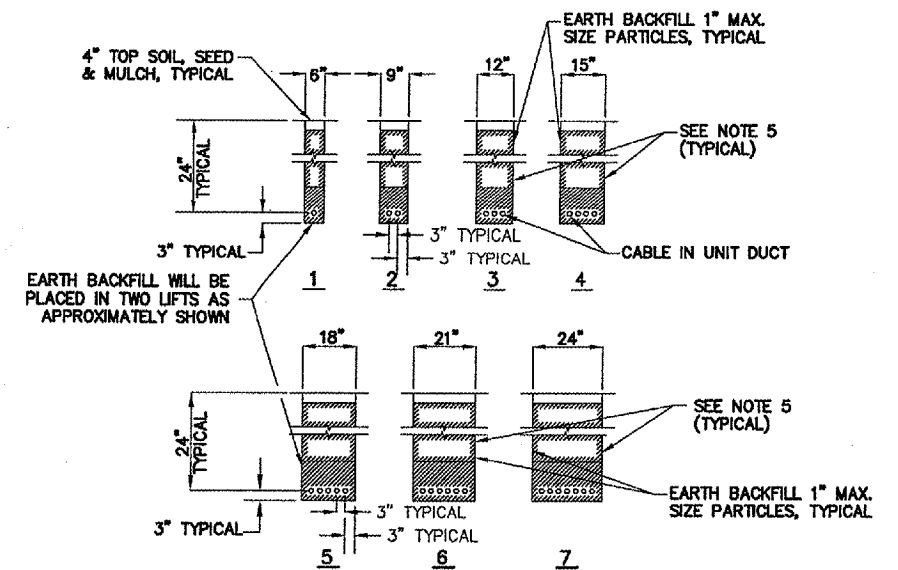
L-806 LIGHTED SUPPLEMENTAL 18" WIND CONE ASSEMBLY DETAILS
 FRANGIBLE - BASE MOUNTED
 6.6 AMP RUNWAY SERIES CIRCUIT
 NOT TO SCALE



PLOWED CABLE
 (NOT TO SCALE)



L-867 SPLICE CAN DETAIL
 (NOT TO SCALE)



- CABLE TRENCH NOTES:
- DETAIL NUMBERS INDICATE NO. OF CABLES.
 - TRENCHES WITH MORE THAN 7 CABLES SHALL BE INCREASED 3" IN WIDTH FOR EACH ADDITIONAL CABLE; IF SPECIFIED ON PLANS, TWO PARALLEL TRENCHES MAY BE CONSTRUCTED.
 - DEPTH OF TRENCHES SHALL BE AS SHOWN ABOVE UNLESS OTHERWISE SPECIFIED ON THE PLANS.
 - ALL DISTURBED SURFACES SHALL BE RESTORED TO THEIR ORIGINAL CONDITION. COST IS INCIDENTAL TO TRENCH. RETURNING MATERIALS AND RATES MAY BE SHOWN ON THE PLANS.
 - INSTALL YELLOW PLASTIC WARNING RIBBON IN TRENCH 9" ABOVE CABLES (TYPICAL ALL TRENCHES).

CABLE TRENCHES
 (NOT TO SCALE)