

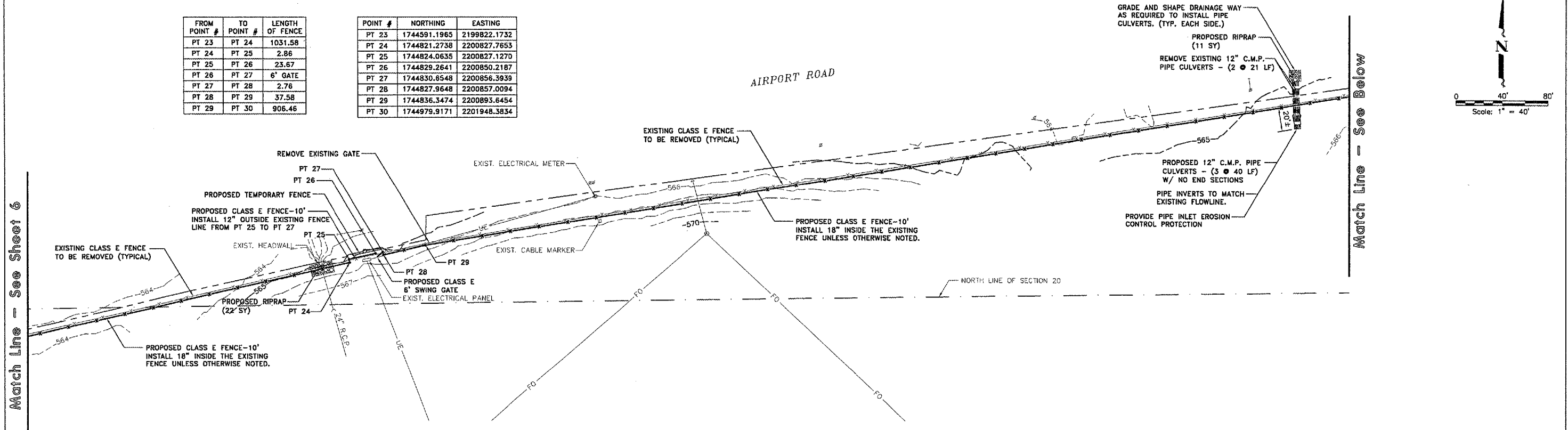
MCCLURE CONTROL POINTS:

C.P. #104: N 1745016.3030 E 2202002.7355 ELEV - 566.90
 C.P. #105: N 1744236.2449 E 2202015.2608 ELEV - 574.38

QU097

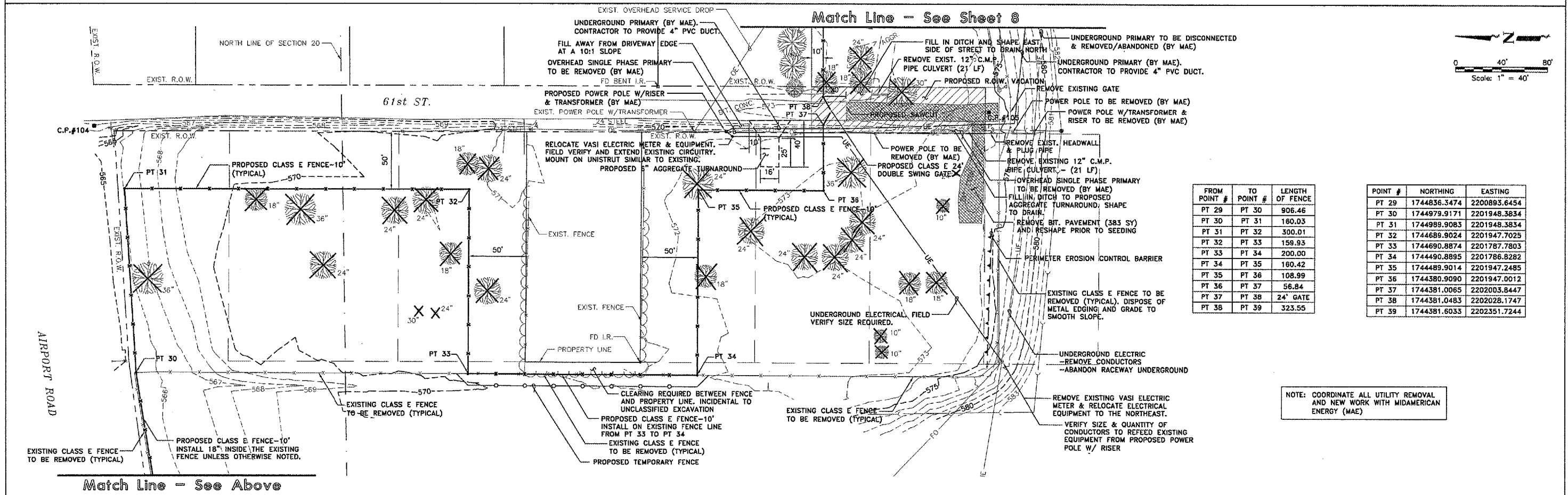
FROM POINT #	TO POINT #	LENGTH OF FENCE
PT 23	PT 24	1031.58
PT 24	PT 25	2.86
PT 25	PT 26	23.67
PT 26	PT 27	6' GATE
PT 27	PT 28	2.76
PT 28	PT 29	37.58
PT 29	PT 30	906.46

POINT #	NORTHING	EASTING
PT 23	1744591.1965	2199822.1732
PT 24	1744821.2738	2200827.7653
PT 25	1744824.0635	2200827.1270
PT 26	1744829.2641	2200850.2187
PT 27	1744830.6548	2200856.3939
PT 28	1744827.9648	2200857.0094
PT 29	1744836.3474	2200893.6454
PT 30	1744979.9171	2201948.3834



Match Line - See Sheet 6

Match Line - See Below



Match Line - See Above

FROM POINT #	TO POINT #	LENGTH OF FENCE
PT 29	PT 30	906.46
PT 30	PT 31	180.03
PT 31	PT 32	300.01
PT 32	PT 33	159.93
PT 33	PT 34	200.00
PT 34	PT 35	180.42
PT 35	PT 36	108.99
PT 36	PT 37	56.84
PT 37	PT 38	24' GATE
PT 38	PT 39	323.55

POINT #	NORTHING	EASTING
PT 29	1744836.3474	2200893.6454
PT 30	1744979.9171	2201948.3834
PT 31	1744989.9083	2201948.3834
PT 32	1744689.9024	2201947.7025
PT 33	1744690.8874	2201787.7803
PT 34	1744490.8895	2201786.8282
PT 35	1744489.9014	2201947.2485
PT 36	1744380.9090	2201947.0012
PT 37	1744381.0065	2202003.8447
PT 38	1744381.0483	2202028.1747
PT 39	1744381.6033	2202351.7244

NOTE: COORDINATE ALL UTILITY REMOVAL AND NEW WORK WITH MIDAMERICAN ENERGY (MAE)

QUAD CITY INTERNATIONAL AIRPORT
 Motine, IL



REVISIONS		
NO.	ITEM	DATE

PLOTTING SCALE: 1" = 40'
 DRAWN BY: SPM
 CHECKED BY:
 DATE: MARCH 2006

McCLURE ENGINEERING ASSOCIATES, INC.
 4200 Kennedy Drive
 (308) 792-5350
 Design Firm License: Illinois #84-00816
 Copyright 2006 by McClure Engineering Associates, Inc.

GENERAL CONSTRUCTION PLAN
 QUAD CITY INTERNATIONAL AIRPORT
 SECURITY FENCE - PHASE III
 MOLINE, ILLINOIS
 FILE NAME: T:\M0106.DWG\DWG\0608MDL.DWG(CD4)
 JOB NUMBER: 01-29-06-008

SHEET NO.
7
 OF 17