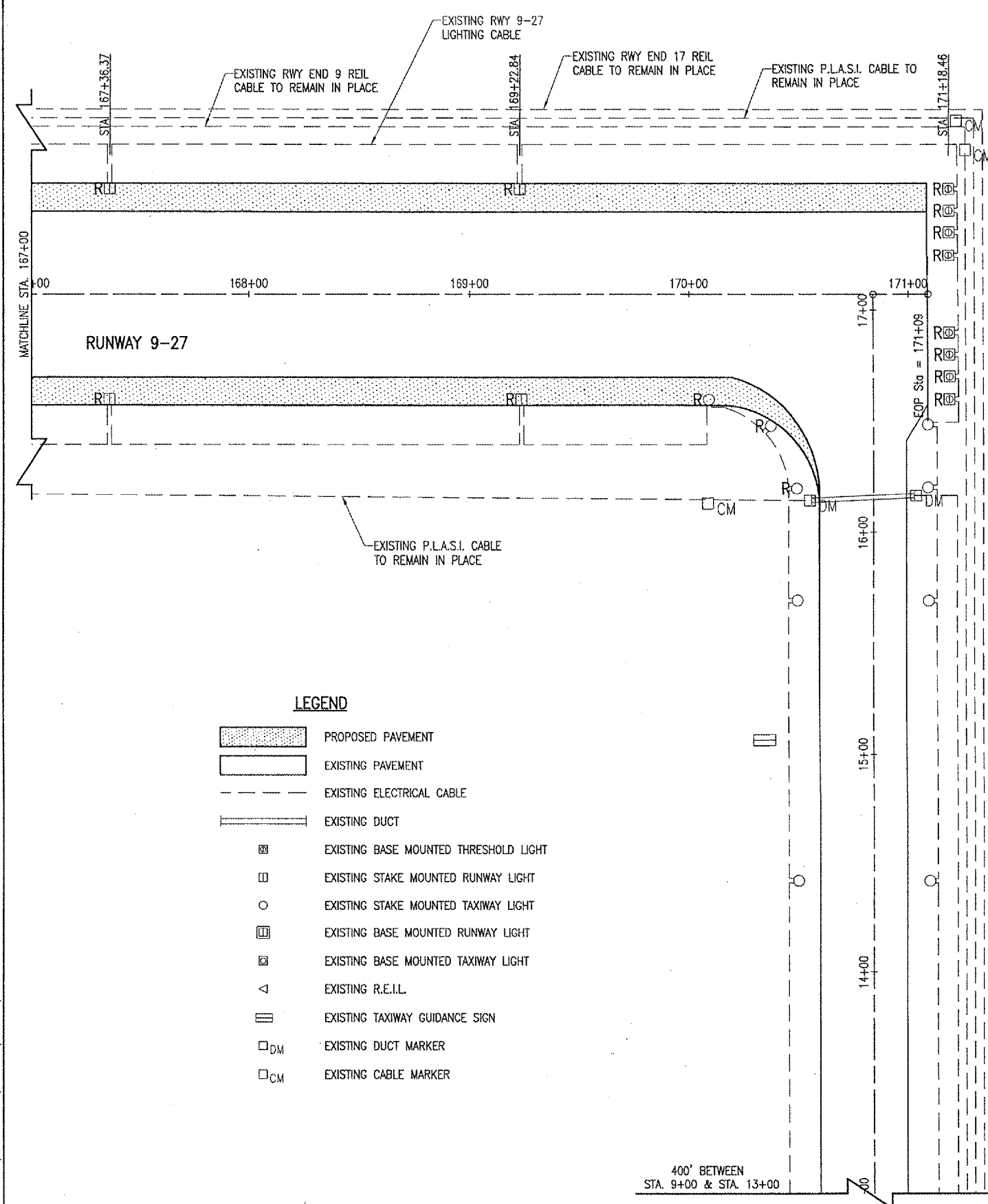


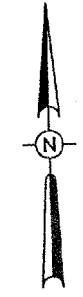
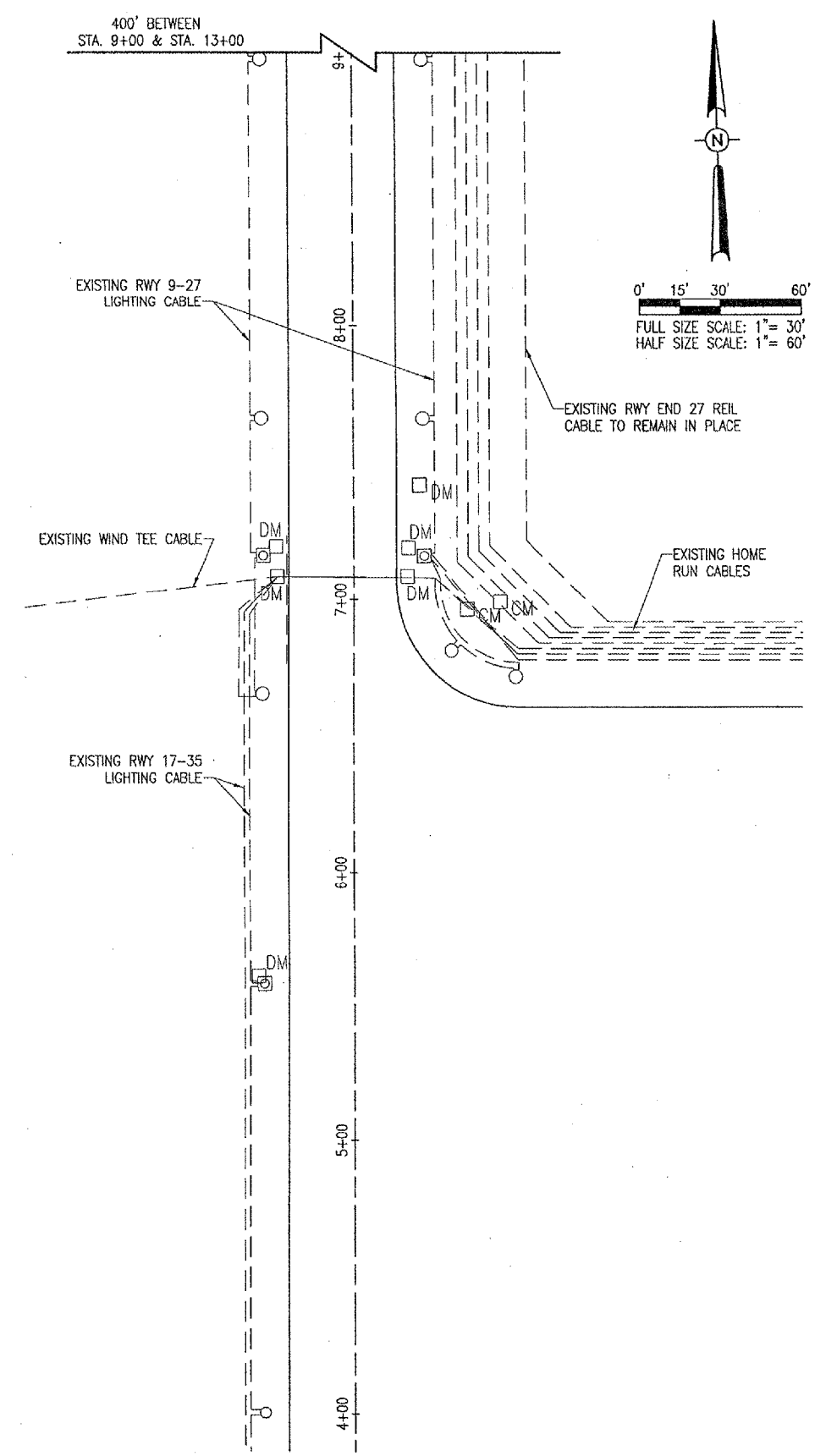
JUN 29, 2006 9:18 AM CAH
 I:\AIRPORTS\ROBINSON\B38-04RWY\AIRPORT\SHEETS\R-14ELE.DWG - 167+00 to 171+09



LEGEND

- PROPOSED PAVEMENT
- EXISTING PAVEMENT
- EXISTING ELECTRICAL CABLE
- EXISTING DUCT
- EXISTING BASE MOUNTED THRESHOLD LIGHT
- EXISTING STAKE MOUNTED RUNWAY LIGHT
- EXISTING STAKE MOUNTED TAXIWAY LIGHT
- EXISTING BASE MOUNTED RUNWAY LIGHT
- EXISTING BASE MOUNTED TAXIWAY LIGHT
- EXISTING R.E.I.L.
- EXISTING TAXIWAY GUIDANCE SIGN
- EXISTING DUCT MARKER
- EXISTING CABLE MARKER

EXISTING R.E.I.L. TO BE RELOCATED, EXISTING BASE TO BE REMOVED
 EXISTING R.E.I.L. CABLE TO BE ABANDONED IN PLACE
 EXISTING R.E.I.L. TO BE RELOCATED, EXISTING BASE TO BE REMOVED



DATE	REVISION	BY

ROBINSON MUNICIPAL AIRPORT
 ROBINSON
 CRAWFORD COUNTY, ILLINOIS
 IL PROJ.: RSV-3490 A.I.P. PROJ.: 3-17-0086-B10

REV	DATE	BY	CHK
1	01/13/04	CCC	CCC
2	01/13/04	CCC	CCC
3	03/05/04	CAH	CAH

HANSON
 Hanson Professional Services Inc.
 1625 South Sixth Street
 Springfield, Illinois 62703-2886
 Offices Nationwide

RUNWAY 9-27
 WIDENING
 EXISTING
 ELECTRICAL PLAN
 STA. 167+00 TO STA. 171+09