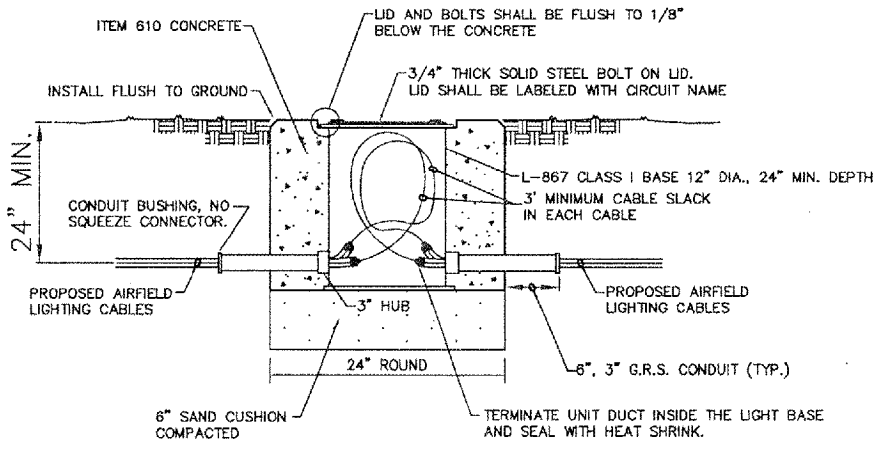


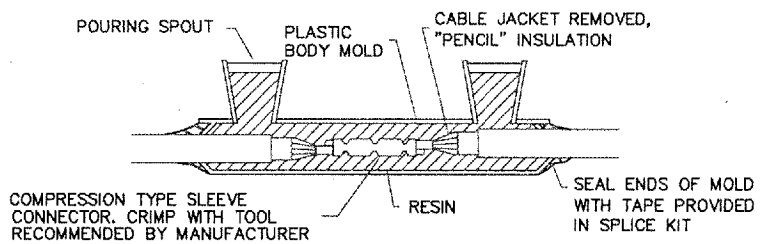
BASE MOUNTED MEDIUM INTENSITY TAXIWAY LIGHT
NOT TO SCALE

NOTES

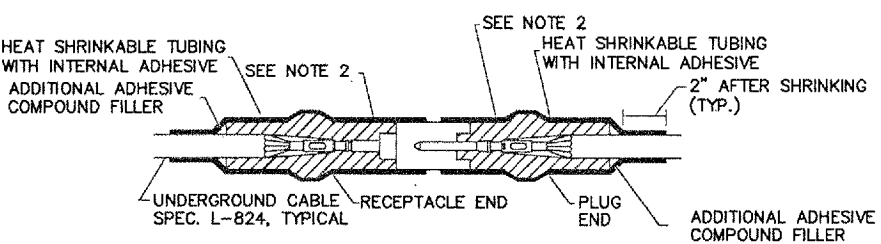
1. INSTALL 2" PVC TO GRS ADAPTER WHERE PVC CONCRETE WILL BE INSTALLED UNDER PAVED SHOULDER.



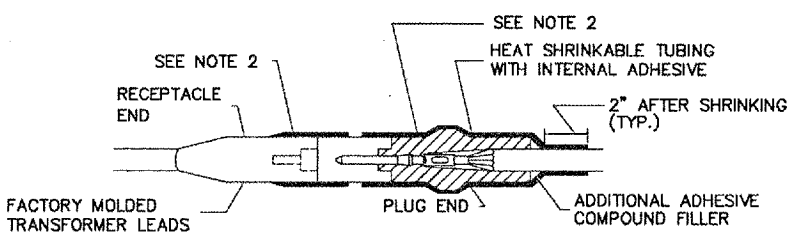
PROPOSED AIRFIELD SPLICE CAN
N.T.S.



TYPE A
FOR SPLICES IN HOMERUNS AND FOR EXTENSIONS TO EXISTING CABLES ONLY



TYPE B
FOR SPLICES FOR USE AT JUNCTION OF HOMERUN WITH LOOP CIRCUIT

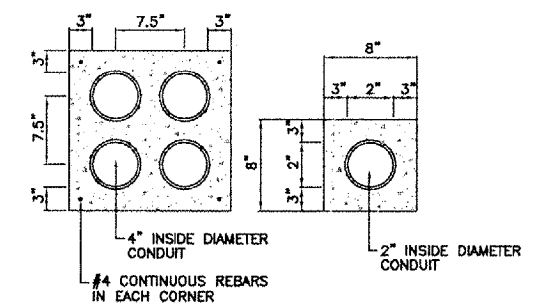


TYPE C
FOR SPLICES AT RUNWAY LIGHTS, TAXIWAY LIGHTS AND SIGNS

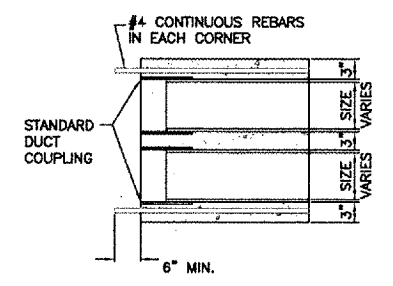
CABLE SPLICES
NOT TO SCALE

NOTES

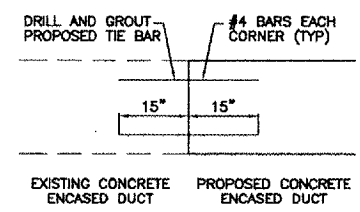
1. INSIDE DIAMETER OF CONNECTOR SHALL PROPERLY MATCH THE OUTSIDE DIAMETER OF CABLE
2. WRAP WITH AT LEAST ONE LAYER OF RUBBER OR SYNTHETIC RUBBER TAPE AND ONE LAYER OF PLASTIC TAPE, ONE-HALF LAPPED, EXTENDING AT LEAST 1-1/2 INCHES ON EACH SIDE OF JOINT.



CONCRETE ENCASED DUCT BANKS
NOT TO SCALE



CONCRETE ENCASED DUCT END DETAIL
NO SCALE



EXTENSION OF EXISTING DUCT
NO SCALE

NOTE: COST OF CONNECTION SHALL BE CONSIDERED INCIDENTAL TO PROPOSED DUCT.

NOTES

1. DIMENSIONS ARE MINIMUM.
2. CONCRETE SHALL CONFORM TO ITEM 610.
3. ALL CONDUIT SHALL BE SCHEDULE 40 PVC.
4. TOP OF CONCRETE ENCASEMENT IN TURF AREAS SHALL NOT BE LESS THAN 24" BELOW FINISHED GRADE.
5. 4" SPLIT DUCT SHALL BE CONCRETE ENCASED WITH 3" MIN. CONCRETE SURROUNDING 4" CONDUIT. COST INCIDENTAL TO SPLIT DUCT.

DETAILS - 3

RO013



Rockford, Illinois
Greater Rockford Airport Authority

AIP: 3-17-0088-XX
RFD-3617

Rehab. Txy B
(Phase 2)

Revisions

No.	Date	Description

0 1
THIS BAR IS EQUAL TO 1"
AT FULL SCALE (17 X 11).

DESIGN BY:	CMT- ARR
DRAWN BY:	CMT- ARR
CHECKED BY:	CMT- ARR
APPROVED BY:	JGP
DATE:	6.9.2006
JOB No:	05258-08-00

DETAILS - 3
(DTL3)

19

SHEET 19 OF 19 SHEETS