

SCOPE OF WORK

THIS PROJECT CONSISTS OF CONSTRUCTING A 3-INCH MIN. BITUMINOUS OVERLAY ON THE AIRCRAFT RAMP, APPLICATION OF A 0.10' POROUS FRICTION COURSE TO RUNWAY 18-36, AND INSTALLATION OF UNDERDRAINS ON TAXIWAYS A AND B. ASSOCIATED WORK WILL INCLUDE PAVEMENT REPAIRS, CRACK CLEANING AND SEALING, PAVEMENT MARKING, TIE DOWN ADJUSTMENTS, INSPECTION HOLE ADJUSTMENTS, INLET ADJUSTMENTS, SHOULDER ADJUSTMENTS, SEEDING, AND PLACEMENT OF EROSION CONTROL BLANKET.

AIRPORT SECURITY NOTE

AIRPORT SECURITY WILL BE MAINTAINED AT ALL TIMES. THE CONTRACTOR WILL CLOSE AND LOCK THE EXISTING GATE IN THE HAUL ROUTE AT THE END OF EACH WORKING DAY.

UTILITY NOTE

THE CONTRACTOR SHALL CONTACT ALL UTILITY COMPANIES AND AGENCIES WHICH HAVE LINES OR CONDUITS IN THE PROPOSED WORK AREA. ALL LINES AND CONDUITS SHALL BE LOCATED AND IDENTIFIED FOR DEPTH BEFORE ANY EXCAVATION BEGINS. THE CONTRACTOR WILL CALL J.U.L.I.E. (1-800-892-0123) TO ACCOMPLISH THE ABOVE. IT IS THE CONTRACTOR'S RESPONSIBILITY TO IDENTIFY ALL UNDERGROUND NON-JULIE UTILITIES LOCATED WITHIN THE PROPOSED CONSTRUCTION LIMITS. THESE UNDERGROUND IMPROVEMENTS WILL BE LOCATED AT THE CONTRACTOR'S OWN EXPENSE PRIOR TO THE START OF CONSTRUCTION ACTIVITIES.

HEIGHT OF CONSTRUCTION EQUIPMENT

THE MAXIMUM ANTICIPATED HEIGHT OF THE CONSTRUCTION EQUIPMENT WILL BE 25 FEET. THE TALLEST EQUIPMENT IS EXPECTED TO BE A DUMP TRUCK.

HAUL ROUTE AND VEHICLE PARKING

THE CONTRACTOR WILL USE THE DESIGNATED HAUL ROUTE AND PARKING AREA AS SHOWN ON THIS SHEET. THE PROPOSED PARKING AREA WILL BE 200' X 200'. THE CONTRACTOR WILL BE REQUIRED TO MAINTAIN THE PROPOSED HAUL ROUTE AND PARKING AREA THROUGHOUT THE COURSE OF THE PROJECT. ANY AREAS DAMAGED OUTSIDE OF THESE AREAS WILL BE REPAIRED BY THE CONTRACTOR AND AT THE CONTRACTOR'S OWN EXPENSE. AT THE CONCLUSION OF THE PROJECT THE CONTRACTOR WILL GRADE, FERTILIZE, SEED AND MULCH THE HAUL ROUTE AND PARKING AREA AS NEEDED TO RESTORE IT TO ITS ORIGINAL STATE. RESTORATION OF THE HAUL ROUTE AND PARKING AREA WILL BE CONSIDERED INCIDENTAL TO THE PROJECT AND NO ADDITIONAL COMPENSATION WILL BE ALLOWED.

CONTRACTOR RESPONSIBILITIES

THE CONTRACTOR'S EQUIPMENT PARKING AND STORAGE AREA WILL BE AS SHOWN ON THIS SHEET. THE CONTRACTOR'S EMPLOYEES WILL PARK THEIR VEHICLES IN THIS AREA. ONLY CONTRACTOR VEHICLES WILL BE ALLOWED OUTSIDE THIS AREA.

THE CONTRACTOR AND HIS EMPLOYEES WILL BE RESTRICTED TO THE WORK AREA AND ALL OTHER AREAS OF THE AIRPORT ARE "OFF LIMITS" TO THEM.

THE CONTRACTOR SHALL KEEP ONE RUNWAY OPEN AT ALL TIMES AND PROVIDE, WHEN POSSIBLE, TAXIWAY ACCESS TO ALL HANGARS AND ADMINISTRATIVE AREAS.

ALL WORK PERFORMED SHALL BE DONE IN A ORDERLY AND EFFECTIVE MANNER TO MINIMIZE RUNWAY CLOSURE.

NO TRENCHES OR HOLES WILL REMAIN OPEN OVERNIGHT WITHIN AN ACTIVE RUNWAY SAFETY AREA, HOWEVER THEY MAY REMAIN OPEN WHEN ADJACENT TO THE TAXIWAY AND OUTSIDE OF THE RUNWAY SAFETY AREA, IF THE TAXIWAY IS CLOSED.

THE CONTRACTOR SHALL MINIMIZE THE LENGTH OF ANY CLOSURE.

BARRICADES AND TRAFFIC CONES

IT WILL BE THE CONTRACTOR'S RESPONSIBILITY TO PLACE AND MAINTAIN BARRICADES AND TRAFFIC CONES AS DIRECTED BY THE AIRPORT MANAGER. THE BARRICADES WILL BE EQUIPPED WITH RED FLASHING OR RED STEADY BURN LIGHTS AND 20" SQUARE ORANGE FLAGS. THE BARRICADES, THEIR MAINTENANCE, PLACEMENT AND REMOVAL WILL BE CONSIDERED AS AN INCIDENTAL ITEM TO THE CONTRACT AND NO ADDITIONAL COMPENSATION WILL BE ALLOWED.

LEGEND

- EXISTING IMPROVEMENTS
- PROPOSED IMPROVEMENTS
- EXISTING BUILDINGS
- PROPOSED HAUL ROUTE AND EQUIPMENT PARKING AREA
- PROPOSED BENCHMARK
- PROPOSED BARRICADES OR TRAFFIC CONES

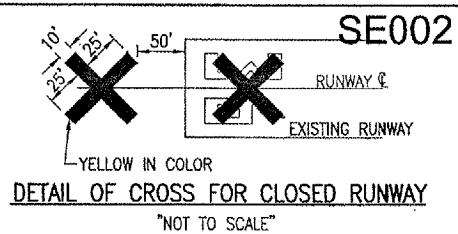
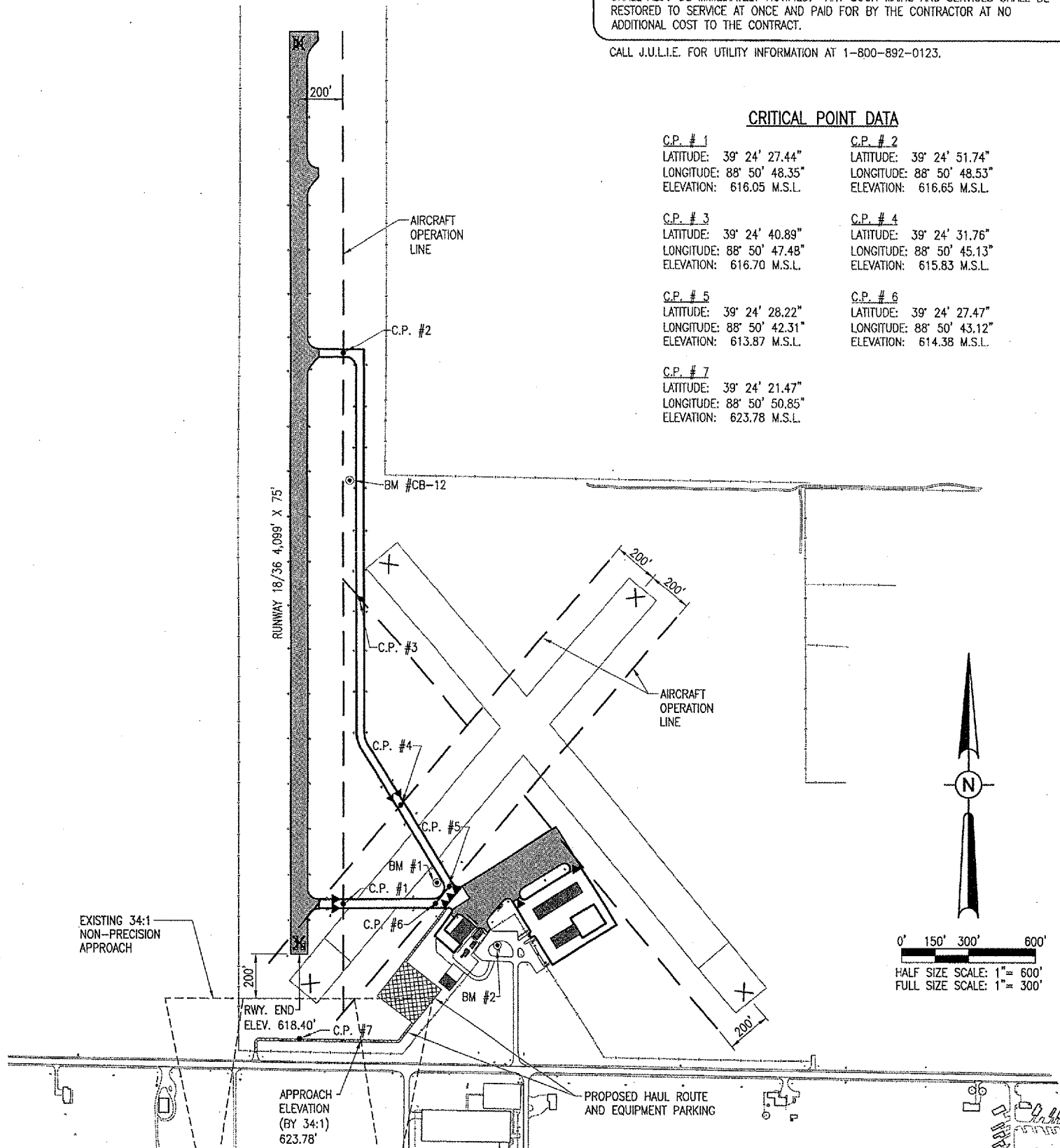
BENCHMARK DATA		
NO.	DESCRIPTION	ELEVATION
BM #1	NW CORNER OF INLET BETWEEN TAXIWAY "A" AND "B"	611.96
BM #2	PAINT DOT ON NORTH FLANGE BOLT OF FIRE HYDRANT APPROXIMATELY 86 FEET SOUTHEAST OF THE MAIN OFFICE BUILDING	615.37
BM #CB-12	CHISELED SQUARE ON TOP OF 12" CONCRETE FLARED END SECTION ON WEST SIDE OF TAXIWAY "B" NEAR NORTHERLY EDGE OF TURF RUNWAY 14-23	614.85

THE LOCATION, SIZE AND TYPE OF MATERIAL OF EXISTING UNDERGROUND UTILITIES INDICATED ON THE PLANS IS NOT REPRESENTED AS BEING ACCURATE, SUFFICIENT OR COMPLETE. IT SHALL BE THE CONTRACTOR'S RESPONSIBILITY TO DETERMINE THE ACTUAL LOCATION OF ALL SUCH FACILITIES, INCLUDING SERVICE CONNECTIONS TO UNDERGROUND UTILITIES. PRIOR TO CONSTRUCTION, THE CONTRACTOR SHALL NOTIFY THE UTILITY COMPANIES OF HIS OPERATIONAL PLANS AND SHALL OBTAIN FROM THE RESPECTIVE UTILITY COMPANIES DETAILED INFORMATION AND ASSISTANCE RELATIVE TO THE LOCATION OF THEIR FACILITIES AND THE WORKING SCHEDULE OF THE COMPANIES FOR REMOVAL OR ADJUSTMENT WHERE REQUIRED. IN THE EVENT AN UNEXPECTED UTILITY INTERFERENCE IS ENCOUNTERED DURING CONSTRUCTION, THE CONTRACTOR SHALL IMMEDIATELY NOTIFY THE UTILITY COMPANY OF JURISDICTION. THE ENGINEER SHALL ALSO BE IMMEDIATELY NOTIFIED. ANY SUCH MAINS AND SERVICES SHALL BE RESTORED TO SERVICE AT ONCE AND PAID FOR BY THE CONTRACTOR AT NO ADDITIONAL COST TO THE CONTRACT.

CALL J.U.L.I.E. FOR UTILITY INFORMATION AT 1-800-892-0123.

CRITICAL POINT DATA

C.P. #1 LATITUDE: 39° 24' 27.44" LONGITUDE: 88° 50' 48.35" ELEVATION: 616.05 M.S.L.	C.P. #2 LATITUDE: 39° 24' 51.74" LONGITUDE: 88° 50' 48.53" ELEVATION: 616.65 M.S.L.
C.P. #3 LATITUDE: 39° 24' 40.89" LONGITUDE: 88° 50' 47.48" ELEVATION: 616.70 M.S.L.	C.P. #4 LATITUDE: 39° 24' 31.76" LONGITUDE: 88° 50' 45.13" ELEVATION: 615.83 M.S.L.
C.P. #5 LATITUDE: 39° 24' 28.22" LONGITUDE: 88° 50' 42.31" ELEVATION: 613.87 M.S.L.	C.P. #6 LATITUDE: 39° 24' 27.47" LONGITUDE: 88° 50' 43.12" ELEVATION: 614.38 M.S.L.
C.P. #7 LATITUDE: 39° 24' 21.47" LONGITUDE: 88° 50' 50.85" ELEVATION: 623.78 M.S.L.	



NOTE:

COST OF CONSTRUCTING, PLACING, MAINTAINING AND REMOVING CROSSES WILL BE CONSIDERED INCIDENTAL TO THE CONTRACT AND NO ADDITIONAL COMPENSATION WILL BE ALLOWED. THE CROSSES WILL BE YELLOW IN COLOR AND SHALL BE MADE OF A SUITABLE MATERIAL AS APPROVED BY THE AIRPORT MANAGER. THE CROSSES WILL BE PLACED OVER THE NUMERALS AND SECURED IN A MANNER APPROVED BY THE MANAGER. THE PROPOSED CROSSES WILL BE PLACED EACH DAY THE RUNWAY IS CLOSED AND REMOVED WHEN THE RUNWAY IS RE-OPENED. THE CONTRACTOR WILL BE RESPONSIBLE FOR THE PLACEMENT AND REMOVAL OF THE CROSSES. NO ADDITIONAL COMPENSATION WILL BE ALLOWED.

J.U.L.I.E. INFORMATION

COUNTY: SHELBY
CITY: SHELBYVILLE
TOWNSHIP: T-11-N
RANGE: R-3-E
SECTION NO.: 10,11
ADDRESS: SHELBY COUNTY AIRPORT
RR # 2
SHELBYVILLE, ILLINOIS 62565

PROPOSED SAFETY PLAN

GENERAL - THE SHELBY COUNTY AIRPORT IS COMPRISED OF THREE RUNWAYS. THE PROPOSED CONSTRUCTION WILL NECESSITATE CLOSING ALL RUNWAYS. ANY TIME THE CONTRACTOR IS WORKING WITHIN 200' OF THE RUNWAY CENTERLINE THE RUNWAY WILL BE CLOSED. RUNWAYS 18-36 AND 4-22 WILL ALSO REQUIRE CLOSURE WHEN THE HAUL ROUTE IS IN USE DUE TO THE POTENTIAL OBSTRUCTION OF THE APPROACHES TO RUNWAY ENDS 36 AND 4. THE RUNWAY WILL BE CLOSED ONLY DURING THE CONSTRUCTION DAY. AT THE END OF EACH CONSTRUCTION DAY THE CONTRACTOR WILL ENSURE A SMOOTH GRADE EXISTS IN ALL AREAS WITHIN THE RUNWAY SAFETY AREA TO THE SATISFACTION OF THE RESIDENT ENGINEER AND RE-OPEN THE RUNWAY. ALL WORK INCLUDED IN OPENING AND CLOSING THE RUNWAY WILL BE CONSIDERED INCIDENTAL TO THE PROJECT AND NO ADDITIONAL COMPENSATION WILL BE ALLOWED.

IDENTIFICATION - WHEN THE CONTRACTORS VEHICLES AND EQUIPMENT ARE ON THE AIRPORT THEY SHALL BE PROPERLY MARKED WITH THREE (3') FOOT SQUARE CHECKERED FLAGS (INTERNATIONAL ORANGE AND WHITE). THE CONTRACTOR WILL ALSO PROVIDE WORKERS WITH SOME TYPE OF TAG OR GARMENT TO IDENTIFY THE PERSON AS BEING PART OF THE CONSTRUCTION CREW.

RADIO CONTROL - THE CONTRACTOR WILL BE REQUIRED TO BE IN TWO-WAY RADIO CONTACT (122.80 MHz.) WITH THE AIRPORT UNICOM. THIS WILL KEEP THE CONTRACTOR IN CONSTANT CONTACT WITH THE SHELBY COUNTY AIRPORT AND ENABLE THE AIRPORT TO IMMEDIATELY CONTACT THE CONTRACTOR IN CASE OF AN AERONAUTIC EMERGENCY THAT WOULD REQUIRE ACTION BY THE CONTRACTOR AND/OR HIS PERSONNEL.

150-ENGINEER'S FIELD OFFICE NOTES

THE PROPOSED ENGINEER'S FIELD OFFICE WILL BE FURNISHED, MAINTAINED, AND REMOVED IN ACCORDANCE WITH ITEM AR150510 "ENGINEER'S FIELD OFFICE" AS STATED ON PAGE 168 OF THE SUPPLEMENTAL SPECIFICATIONS AND RECURRING SPECIAL PROVISIONS, ADOPTED JULY 1, 2004.

THE LOCATION OF THE PROPOSED ENGINEER'S FIELD OFFICE WILL BE DETERMINED AT THE PRE-CONSTRUCTION MEETING.

THE ENGINEERING FIRM WILL MAKE PAYMENT FOR ALL LONG DISTANCE TELEPHONE CALLS IN EXCESS OF ONE HUNDRED DOLLARS (\$100.00) PER MONTH.

THE PROPOSED ENGINEER'S FIELD OFFICE WILL BE PAID FOR UNDER ITEMS: AR150510 ENGINEER'S FIELD OFFICE ____ 1 L.S.

EROSION CONTROL

THIS PROJECT WILL DISTURB MORE THAN 1 ACRE OF LAND, THEREFORE A N.P.D.E.S. PERMIT WILL BE REQUIRED AND EROSION CONTROL MEASURES IMPLEMENTED, AS DEPICTED ON THE PROPOSED STAKING PLAN.

AIRCRAFT OPERATION LINE

THE CONTRACTOR WILL LOCATE THIS LINE AT THE START OF CONSTRUCTION AND WILL PLACE FLAGGED LATHE EVERY 150' ALONG IT. THIS LINE WILL BE THE LIMITS THAT ALL CONTRACTOR PERSONNEL MAY VENTURE WHEN A RUNWAY IS NOT CLOSED. THE CONTRACTOR WILL MAINTAIN THE LATHE LINE FOR RUNWAYS.

DATE	BY	
	REVISION	
SHELBY COUNTY AIRPORT SHELBYVILLE, ILLINOIS		
A.I.P. PROJ.: 3-17-0093-B7		
REVISED	DATE	BY
CCC	05/01/06	
CCC	05/01/06	
RAW	05/31/06	
LAYOUT	05/01/06	
DRAWN	05/01/06	
REVIEWED	05/31/06	
 Hanson Professional Services Inc. 1525 South Sixth Street Springfield, Illinois 62703-2886 Chicago, Nationalwide		
OVERLAY RWY. & APN. INSTALL UNDERDRAINS PROPOSED SAFETY PLAN		
3		
3 of 33 sheets		

JUL 05, 2005 8:48 PM RAW
 I:\AIRPORTS\SHELBY\827-06APN\AIRPORT\SHEETS\R-003SFY.DWG - SAFETY