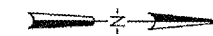
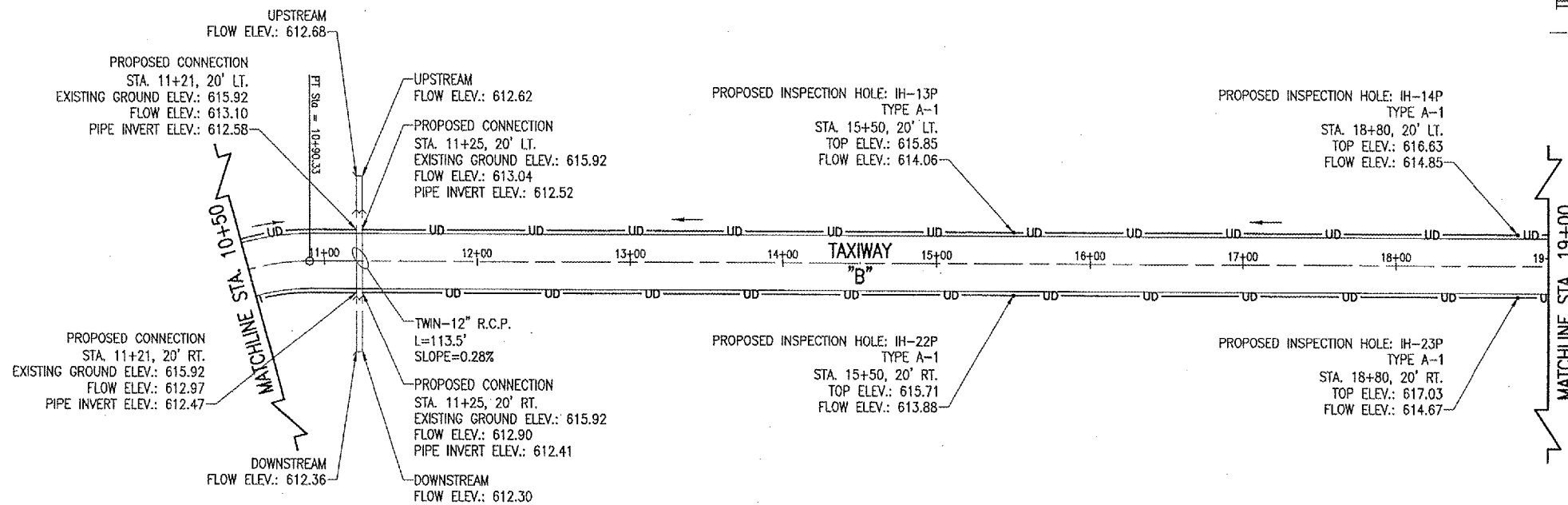


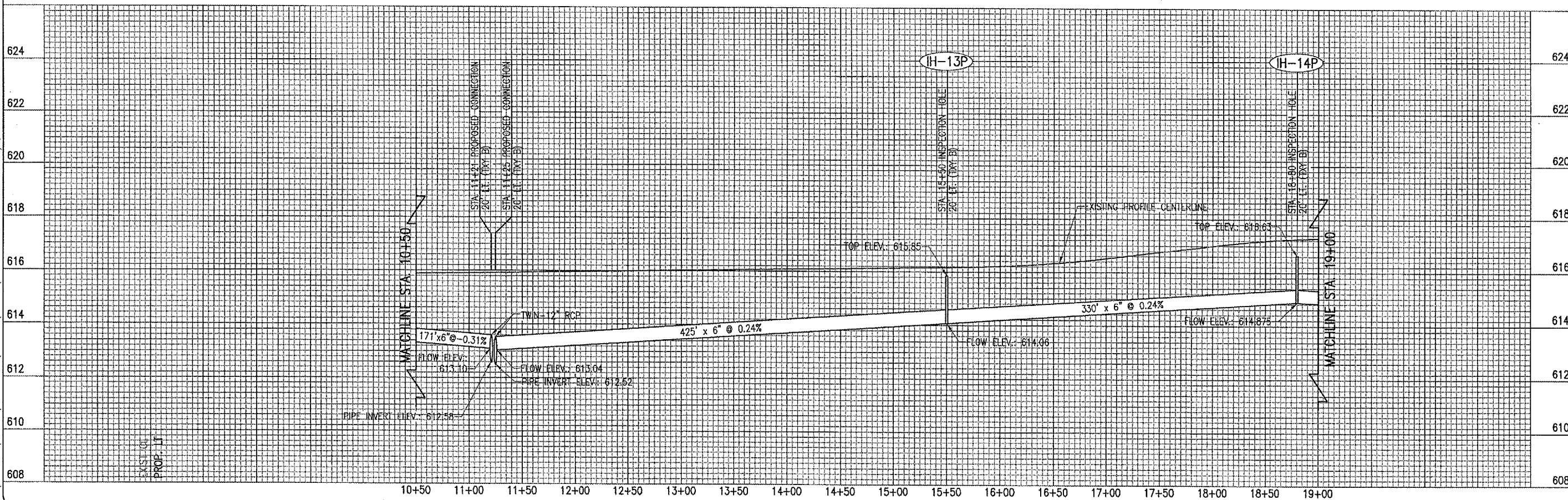
1+00 13+00 14+00 15+00 16+00 17+00 18+00 RUNWAY 18-36 19+00 20+00 21+00 22+00 2+

LEGEND

- EXISTING PAVEMENT
- EXISTING STORM SEWER
- PROPOSED UNDERDRAIN
- PROPOSED INSPECTION HOLE
- EXISTING ELECTRICAL DUCT
- EXISTING UNDERDRAIN
- EXISTING BASE MOUNT RUNWAY LIGHT
- EXISTING STAKE MOUNT RUNWAY LIGHT
- EXISTING STAKE MOUNT TAXIWAY LIGHT
- EXISTING STAKE MOUNT THRESHOLD LIGHT
- EXISTING TAXI GUIDANCE SIGN



SCALES:  
1" = 50' HOR  
1" = 2' VER



BY	REVISION	DATE

SHELBY COUNTY AIRPORT  
SHELBYVILLE, ILLINOIS

A.I.P. PROJ.: 3-17-0093-B7  
IL PROJ.: 2HQ-3615

REVISION	DATE	BY	CHKD

**HANSON**  
Hanson Professional Services Inc.  
1226 South State Street  
Springfield, IL 62703-2888  
Offices Nationwide

OVERLAY RWY. & APN.  
INSTALL UNDERDRAINS  
PROPOSED TAXIWAY "B"  
LEFT UNDERDRAIN P&P  
STA. 10+50 TO STA. 19+00

JUL 05, 2006 9:00 PM RAW  
I:\AIRPORTS\SHELBY\827-06APN\AIRPORT\SHEETS\R-703PWP-B-LI.DWG - Taxiway B