

STATE OF ILLINOIS  
DEPARTMENT OF TRANSPORTATION

F.A.I. RTE.	SECTION	COUNTY	TOTAL SHEETS	SHEET NO.
39	50(1-8)PP	LASALLE	15	1
		ILLINOIS	CONTRACT NO. 66H34	

INDEX OF SHEETS

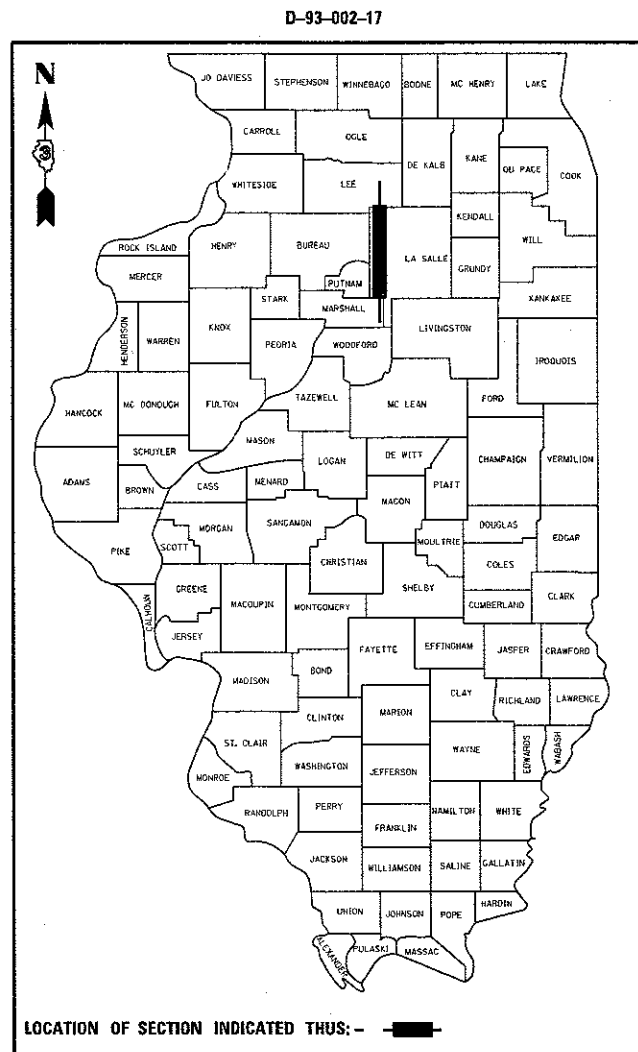
1. COVER SHEET
2. GENERAL NOTES
- 3-4. SUMMARY OF QUANTITIES
5. TYPICAL SECTIONS
- 6-11. SCHEDULES
12. TRAFFIC CONTROL AND PROTECTION, STANDARD 701400 (SPECIAL)
13. PAVEMENT MARKING
- 14-15. CLASS A PATCHING DETAILS

PROPOSED  
HIGHWAY PLANS

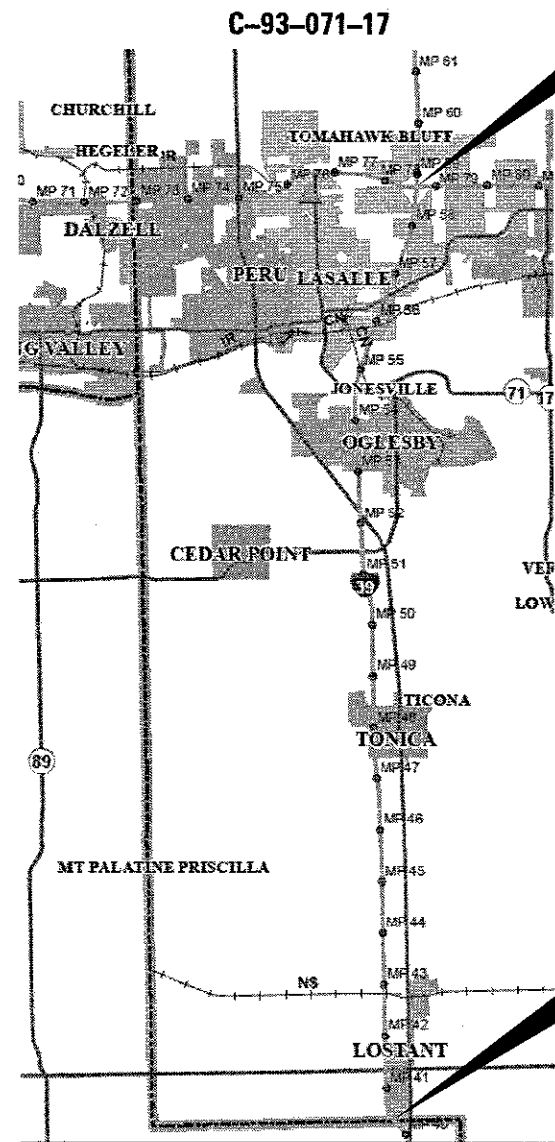
F.A.I. ROUTE 39 (I-39)  
SECTION 50(1-8)PP  
PAVEMENT PATCHING  
LASALLE COUNTY

STANDARDS

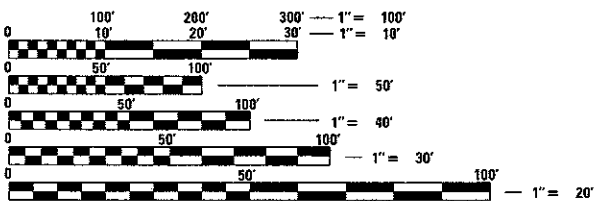
- |           |   |
|-----------|---|
| 000001-06 | STANDARD SYMBOLS, ABBREVIATIONS AND PATTERNS                                  |
| 001001-02 | AREAS OF REINFORCEMENT BARS   |
| 001006    | DECIMAL OF AN INCH AND OF A FOOT  |
| 701101-05 | OFF-ROAD OPERATIONS MULTILANE, 15' (4.5 m) TO 24' (600 mm) FROM PAVEMENT EDGE |
| 701401-10 | LANE CLOSURE, FREEWAY/EXPRESSWAY  |
| 701426-09 | LANE CLOSURE, MULTILANE INTERMITTENT OR MOVING OPERATION, FOR SPEEDS ≥ 45 MPH |
| 701428-01 | TRAFFIC CONTROL SETUP AND REMOVAL FREEWAY/EXPRESSWAY                          |
| 701901-06 | TRAFFIC CONTROL DEVICES   |
| 701106-02 | OFF-RD OPERATIONS, MULTILANE, MORE THAN 15'(4.5m) AWAY                        |
| 701411-09 | LANE CLOSURE, MULTILANE, AT ENTRANCE OR EXIT RAMP, FOR SPEEDS ≥ 45 MPH        |



END IMPROVEMENT  
INTERSTATE 80  
M.M. 58.76



BEGIN IMPROVEMENT  
MARSHALL/LASALLE COUNTY LINE  
M.M. 40.32



FULL SIZE PLANS HAVE BEEN PREPARED USING STANDARD ENGINEERING SCALES. REDUCED SIZED PLANS WILL NOT CONFORM TO STANDARD SCALES. IN MAKING MEASUREMENTS ON REDUCED PLANS, THE ABOVE SCALES MAY BE USED.

J.U.L.I.E.  
JOINT UTILITY LOCATION INFORMATION FOR EXCAVATION  
1-800-892-0123  
OR 811

PROJECT ENGINEER: JOE KANNEL P.E.  
UNIT CHIEF: RON WOODSHANK  
DISTRICT 3 NO. (815) 434-6131  
CONTRACT NO. 66H34

GROSS LENGTH = 92,453 FT. = 17.51 MILE  
NET LENGTH = 1,136 FT. = 0.22 MILE

FUNCTIONAL CLASSIFICATION  
RURAL INTERSTATE  
F.A.I. ROUTE 39 (I-39)  
2015 ADT 18900  
P.V. 61.0%      S.U. 9.2%      M.U. 29.8%

STATE OF ILLINOIS  
DEPARTMENT OF TRANSPORTATION

SUBMITTED *May 23, 2017*

*Markell*  
REGIONAL ENGINEER

*June 30, 2017*  
*Margaret M. Addis PE*  
ENGINEER OF DESIGN AND ENVIRONMENT

*June 30, 2017*  
*David J. ...*  
DIRECTOR OF PROGRAM DEVELOPMENT

PRINTED BY THE AUTHORITY  
OF THE STATE OF ILLINOIS



CODE NO.	ITEM	UNIT	TOTAL QUANTITY	CONSTRUCTION CODE	
				CONT. MAINT. 100% STATE ROADWAY	CONT. MAINT. 100% STATE ROADWAY
				0004 - RURAL ✓	0004 - URBAN ✓
44200553	CLASS A PATCHES, TYPE II, 10 INCH	SO YD	417	328	89
44200557	CLASS A PATCHES, TYPE III, 10 INCH	SO YD	198	160	38
44200559	CLASS A PATCHES, TYPE IV, 10 INCH	SO YD	796	543	253
44213000	PATCHING REINFORCEMENT	SO YD	1411	1031	380
44213200	SAW CUTS	FOOT	4856	3755	1101
44213204	TIE BARS 3/4"	EACH	3486	2802	684
67100100	MOBILIZATION	LSUM	1	0.5	0.5
70100420	TRAFFIC CONTROL AND PROTECTION, STANDARD 701411	EACH	1	0.5	0.5
70103815	TRAFFIC CONTROL SURVEILLANCE	CAL DA	16	11	5
X7015005	CHANGEABLE MESSAGE SIGN	CAL PA	30	15	15
78008310	POLYUREA PAVEMENT MARKING TYPE II - LINE 4"	FOOT	1060	774	286
78008330	POLYUREA PAVEMENT MARKING TYPE II - LINE 6"	FOOT	1320	1020	300
X0326880	MESSAGE BOARD VEHICLE DRIVER	HOUR	192	132	60
X0326907	PORTABLE, VEHICLE MOUNTED, CHANGEABLE MESSAGE SIGN	CAL MO	1	0.5	0.5

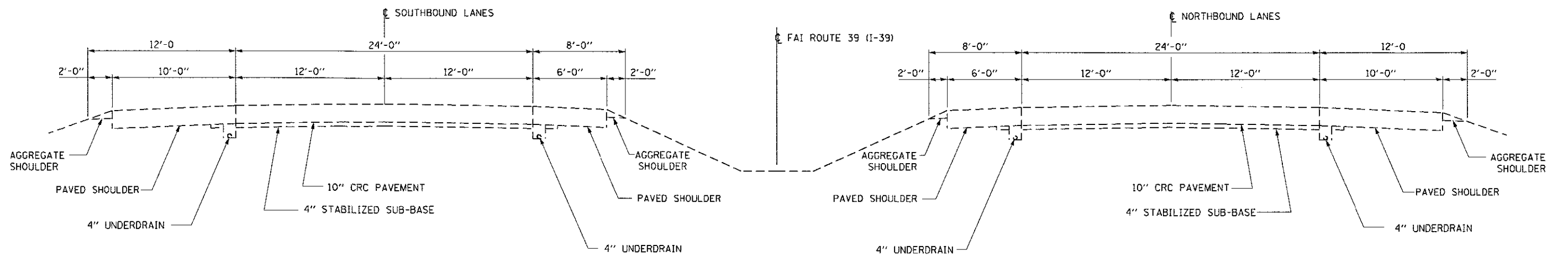
•SPECIALITY ITEMS

FILE NAME =	USER NAME = woodshankr1	DESIGNED - RW	REVISED -	<b>STATE OF ILLINOIS DEPARTMENT OF TRANSPORTATION</b>	<b>SUMMARY OF QUANTITIES</b>	F.A.I. RTE.	SECTION	COUNTY	TOTAL SHEETS	SHEET NO.	
pr:\IL084EBIDINTEG\Illinois.gov\WIDOT\Documents\DOT Offices\District 3\Projects\0366\DRAWN\66H34RW\66H34RW.dgn	PLT SCALE = 100.0000' / in.	CHECKED - EP	REVISED -			39	5011-BIPP	LASALLE	15	3	
Default	PLDT DATE = 5/22/2017	DATE - 3/22/2017	REVISED -			SCALE: SHEET 1 OF 2 SHEETS STA. TO STA.		CONTRACT NO. 66H34			
						ILLINOIS FED. AID PROJECT					

REV

CODE NO.	ITEM	UNIT	TOTAL QUANTITY	CONSTRUCTION CODE	
				CONT. MAINT. 100% STATE ROADWAY	CONT. MAINT. 100% STATE ROADWAY
				0004	0004
				RURAL	URBAN
X7010805	TRAFFIC CONTROL AND PROTECTION, STANDARD 701401 (SPECIAL)	LSUM	1	0.5	0.5

FILE NAME =	USER NAME = woodshankr1	DESIGNED - RW	REVISED -	<b>STATE OF ILLINOIS DEPARTMENT OF TRANSPORTATION</b>	<b>SUMMARY OF QUANTITIES</b>			F.A.I. RTE.	SECTION	COUNTY	TOTAL SHEETS	SHEET NO.
pws\NL084EBID\INTEG.illinois.gov\PWIDOT\Documents\100T Offices\District 3\Projects\036	DRAWN Date\66H34 RW\tds.dgn	CHECKED - EP	REVISED -					39	5011-8)PP	LASALLE	15	4
Default	PLOT SCALE = 100.0000' / 1"	DATE - 3/22/2017	REVISED -		SCALE: SHEET 2 OF 2 SHEETS STA. TO STA.			ILLINOIS FED. AID PROJECT		CONTRACT NO. 66H34		
	PLOT DATE = 5/22/2017	DATE - 3/22/2017	REVISED -									



## TYPICAL SECTION

FILE NAME =	USER NAME = woodshankr	DESIGNED - RW	REVISED -	<b>STATE OF ILLINOIS DEPARTMENT OF TRANSPORTATION</b>	<b>TYPICAL SECTION</b>	F.A.I. RTE.	SECTION	COUNTY	TOTAL SHEETS	SHEET NO.	
pw\11884EBID\TEG.illinois.gov\FWIDDT\Documents\DOT Offices\District 3\Projects\66H34\Drawings\66H34 RW\66H34.dgn	DRW	REVISIONS	REVISED -			39	50(I)-8PP	LASALLE	15	5	
Default	PLOT SCALE = 100.0000' / 1" =	CHECKED - EP	REVISED -			SCALE: SHEET 1 OF 1 SHEETS STA. TO STA.		CONTRACT NO. 66H34			
	PLOT DATE = 5/17/2017	DATE - 3/22/2017	REVISED -			ILLINOIS FED. AID PROJECT					

PATCHING SCHEDULE  
NORTHBOUND LANES - RURAL

LOCATION MILE MARKER	PASSING LANE							DRIVING LANE						
	PATCH LENGTH FEET	CLASS A PATCHING 10"			PATCH REINF. SQ YD	SAW CUTS FOOT	TIE BARS 3/4" EACH	PATCH LENGTH FEET	CLASS A PATCHING 10"			PATCH REINF. SQ YD	SAW CUTS FOOT	TIE BARS 3/4" EACH
		TYPE II SQ YD	TYPE III SQ YD	TYPE IV SQ YD					TYPE II SQ YD	TYPE III SQ YD	TYPE IV SQ YD			
40.32	MARSHALL COUNTY LINE													
40.32							25				33	33	99	54
40.32							8	11				11	48	42
40.32							6	8				8	42	42
40.52							25				33	33	99	54
40.52							6							
40.92							6	8				8	42	42
41.02	6	8			8	42	42							
41.22							6	8				8	42	42
41.35	IL ROUTE 18 INTERCHANGE													
41.72	6	8			8	42	42							
41.92	6	8			8	42	42							
41.92	6	8			8	42	42							
42.22							10	13				13	54	42
42.42							25				33	33	99	54
42.42	20			27	27	84	51							
42.52							6	8				8	42	42
42.62	6	8			8	42	42							
42.72	6	8			8	42	42							
43.72	6	8			8	42	42							
43.72	6	8			8	42	42							
46.12							8	11				11	48	42
46.62	6	8			8	42	42							
46.72							25				33	33	99	54
47.22	6	8			8	42	42							
47.62							25				33	33	99	54
47.62	10	13			13	54	42							
47.62							25				33	33	99	54
47.92							25				33	33	99	54
47.92							6	8				8	42	42
48.32							25				33	33	99	54
48.42	TONICA INTERCHANGE													
48.42							6	8				8	42	42
48.52	6	8			8	42	42							
50.72							10	13				13	54	42
50.92							6	8				8	42	42
51.22	6	8			8	42	42							
51.32	6	8			8	42	42							
51.45	IL ROUTE 71 INTERCHANGE													
52.20	IL ROUTE 251 INTERCHANGE													
52.22							8	11				11	48	42
53.54	OGLESBY INTERCHANGE													
TOTALS	108	117		27	144	684	639	292	115		264	379	1338	936

NB RURAL PATCHING TOTALS

CLASS A PATCHING			PATCH REINF. SQ YD	SAW CUTS FOOT	TIE BARS 3/4" EACH
TYPE II 10" SQ YD	TYPE III 10" SQ YD	TYPE IV 10" SQ YD			
232		291	523	2022	1575



PATCHING SCHEDULE  
SOUTHBOUND LANES - URBAN

LOCATION MILE MARKER	PASSING LANE							DRIVING LANE							
	PATCH LENGTH FEET	CLASS A PATCHING 10"			PATCH REINF. SQ YD	SAW CUTS FOOT	TIE BARS 3/4" EACH	PATCH LENGTH FEET	CLASS A PATCHING 10"			PATCH REINF. SQ YD	SAW CUTS FOOT	TIE BARS 3/4" EACH	
		TYPE II SQ YD	TYPE III SQ YD	TYPE IV SQ YD					TYPE II SQ YD	TYPE III SQ YD	TYPE IV SQ YD				
58.76	I-80 INTERCHANGE														
57.95							30				40	40	114	42	
56.95							30				40	40	114	42	
56.50	US ROUTE 6 INTERCHANGE														
54.95	10	13			13	44	42								
54.95	25			33	33	74	54								
54.85								30				40	40	114	42
54.75								30				40	40	114	42
54.55								25				33	33	99	42
54.15	14		19		19	52	42								
53.54	OGLESBY INTERCHANGE														
TOTALS	49	13	19	33	65	170	138	145				193	193	555	210

SB URBAN PATCHING TOTALS

CLASS A PATCHING			PATCH REINF. SQ YD	SAW CUTS FOOT	TIE BARS 3/4" EACH
TYPE II 10" SQ YD	TYPE III 10" SQ YD	TYPE IV 10" SQ YD			
13	19	226	258	725	348



PATCHING SCHEDULE  
SOUTHBOUND LANES - RURAL

LOCATION MILE MARKER	PASSING LANE							DRIVING LANE							
	PATCH LENGTH FEET	CLASS A PATCHING 10"			PATCH REINF. SQ YD	SAW CUTS FOOT	TIE BARS 3/4" EACH	PATCH LENGTH FEET	CLASS A PATCHING 10"			PATCH REINF. SQ YD	SAW CUTS FOOT	TIE BARS 3/4" EACH	
		TYPE II SQ YD	TYPE III SQ YD	TYPE IV SQ YD					TYPE II SQ YD	TYPE III SQ YD	TYPE IV SQ YD				
53.54	OGLESBY INTERCHANGE														
53.05							6	8				8	36	42	
52.85	8	11			11	48	42								
52.75								10	13				13	44	42
52.65								15		20			20	54	42
52.65	15		20		20	69	42								
52.65								30			40		40	84	57
52.20	IL ROUTE 251 INTERCHANGE														
51.45	IL ROUTE 71 INTERCHANGE														
51.05								6	8				8	42	42
50.75								6	8				8	42	42
50.65								6	8				8	42	42
49.25								6	8				8	42	42
48.75								25			33		33	99	54
48.65	6	8			8	42	42								
48.65	12		16		16	60	42								
48.65								12		16			16	60	42
48.42	TONICA INTERCHANGE														
48.25	6	8			8	42	42								
47.15	6	8			8	42	42								
46.55								12		16			16	60	42
46.55								15		20			20	69	42
46.25	25			33	33	99	54								
45.95	25			33	33	99	54								
44.05								6	8				8	42	42
43.65								25			33		33	99	54
42.95								30			40		40	114	57
42.95								30			40		40	114	57
42.75								12		16			16	60	42
42.35								15		20			20	69	42
41.35	IL ROUTE 18 INTERCHANGE														
41.25	12		16		16	60	42								
40.32	MARSHALL COUNTY LINE														
TOTALS	115	35	52	66	153	561	402	267	61	108	186	355	1172	825	

SB RURAL PATCHING TOTALS

CLASS A PATCHING			PATCH REINF. SQ YD	SAW CUTS FOOT	TIE BARS 3/4" EACH
TYPE II 10" SQ YD	TYPE III 10" SQ YD	TYPE IV 10" SQ YD			
96	160	252	508	1733	1227

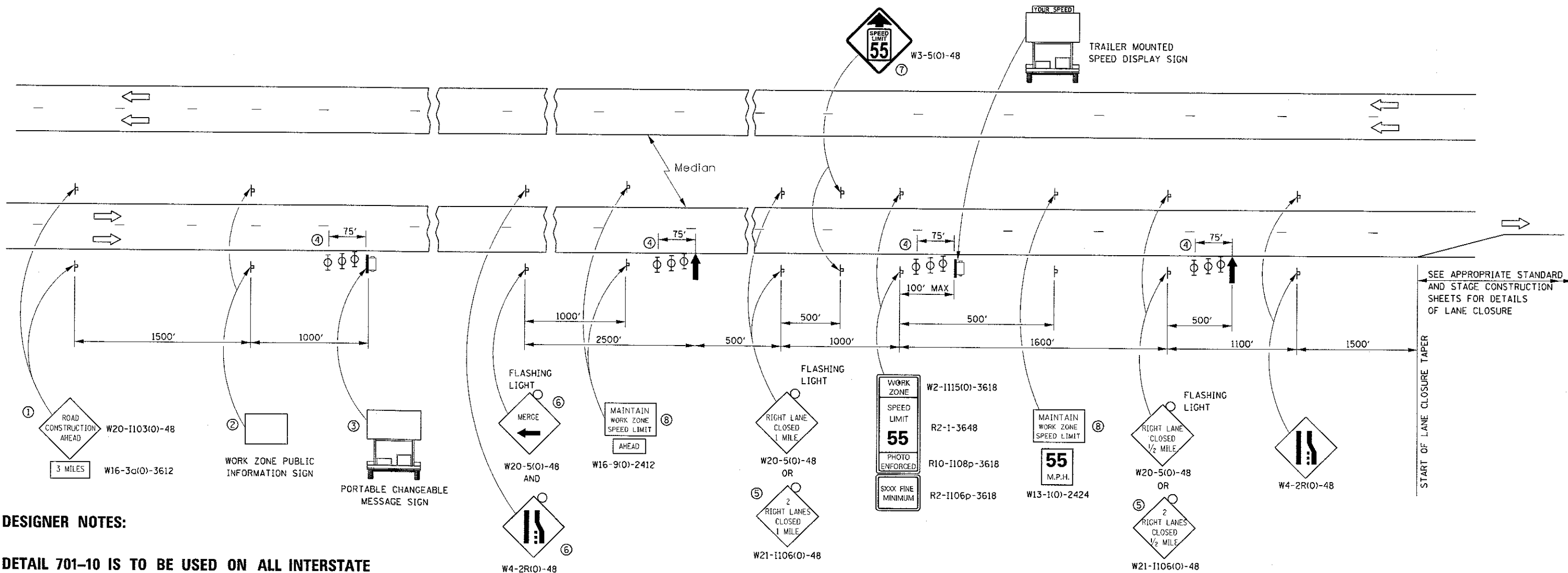
SCHEDULE - PAVEMENT MARKING  
NORTHBOUND - RURAL

LOCATION		POLYUREA PAVEMENT MARKING TYPE I LINE 4"		POLYUREA PAVEMENT MARKING TYPE I LINE 6"
		FEET		FEET
MILE POST	INTERCHANGE	YELLOW	WHITE	WHITE
40.32	MARSHALL COUNTY LINE			
40.32			25	30
40.32			8	10
40.32			6	10
40.52			25	30
40.52			6	10
40.92			6	10
41.02		6		10
41.22			6	10
41.35	IL ROUTE 18 INTERCHANGE			
41.72		6		10
41.92		6		10
41.92		6		10
42.22			10	10
42.42			25	30
42.42		20		20
42.52			6	10
42.62		6		10
42.72		6		10
43.72		6		10
43.72		6		10
46.12			8	10
46.62		6		10
46.72			25	30
47.22		6		10
47.62			25	30
47.62		10		10
47.62			25	30
47.92			25	30
47.92			6	10
48.32			25	30
48.42	TONICA INTERCHANGE			
48.42			6	10
48.52		6		10
50.72			10	10
50.92			6	10
51.22		6		10
51.32		6		10
51.45	IL ROUTE 71 INTERCHANGE			
52.20	IL ROUTE 251 INTERCHANGE			
52.22				
53.54	OGLESBY INTERCHANGE			
SUBTOTAL		108	284	
NB TOTALS		392		520

SCHEDULE - PAVEMENT MARKING  
NORTHBOUND - URBAN

LOCATION		POLYUREA PAVEMENT MARKING TYPE I LINE 4"		POLYUREA PAVEMENT MARKING TYPE I LINE 6"
		FEET		FEET
MILE POST	INTERCHANGE	YELLOW	WHITE	WHITE
54.02		10		10
54.02		20		10
54.22			8	10
56.22			10	10
56.22		10		10
56.32			10	10
56.50	US ROUTE 6 INTERCHANGE			
56.52			14	20
57.12			10	10
58.76	INTERSTATE 80 INTERCHANGE			
SUBTOTAL		40	52	
NB TOTALS		92		90





**DESIGNER NOTES:**

**DETAIL 701-10 IS TO BE USED ON ALL INTERSTATE PROJECTS. THE BUREAU OF CONSTRUCTION SHALL DETERMINE EITHER OPTION 1 OR 2.**

**ASK BUREAU OF CONSTRUCTION ON THE OFF-PEAK HOUR USAGE FOR PROJECT**

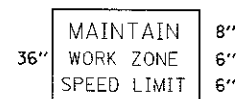
**INCLUDE EXTRA MESSAGE BOARDS WHEN NEAR MAJOR INTERCHANGES**

**USE DISTRICT 3 SPECIAL PROVISION FOR TRAFFIC CONTROL AND PROTECTION, STANDARD 701400 (SPECIAL) AND 701401 (SPECIAL)**

**USE DISTRICT 3 SPECIAL PROVISION FOR PORTABLE VEHICLE MOUNTED CHANGEABLE MESSAGE SIGN**

**INCLUDE AN ALTERNATE ROUTE SIGNING DETOUR DETAIL IN PLANS**

- ① THE ROAD CONSTRUCTION AHEAD SIGN SHALL BE LOCATED 3 MILES IN ADVANCE OF THE PROJECT LIMITS.
- ② THE MESSAGE AND SIZE OF THE WORK ZONE PUBLIC INFORMATION SIGN SHALL BE AS SPECIFIED BY THE DEPARTMENT.
- ③ TO BE PLACED IN THE MEDIAN WHEN FEASIBLE. THE MESSAGE BOARD SHALL BE USED TO DISPLAY STATUS OF LANES WITHIN THE PROJECT. THE PRIMARY MESSAGES SHALL BE:  
 "RIGHT LANE CLOSED" / " x MILES AHEAD"  
 "LEFT LANE CLOSED" / " x MILES AHEAD"  
 "ALL LANES OPEN"
- ④ THREE, TYPE II BARRICADES, DRUMS, OR VERTICAL BARRICADES AT 25' CENTERS.
- ⑤ THIS SIGN SHALL BE USED WHEN 2 LANES ARE CLOSED.
- ⑥ WHEN THE LEFT LANE IS CLOSED, SWITCH THESE TWO SIGNS AND THE DIRECTION OF THE MERGE ARROW.
- ⑦ THIS SIGN SHALL ONLY BE USED IF THE EXISTING SPEED LIMIT IS GREATER THAN 65 MPH.
- ⑧ 48"x36" FLUORESCENT ORANGE SIGN WITH BLACK LETTERS.



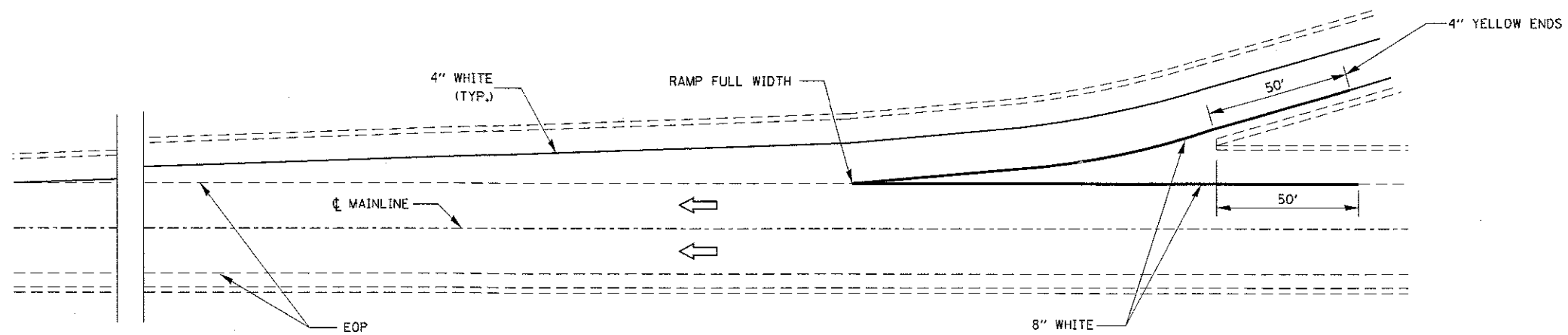
- ↑ ARROW BOARD
- ▭ PORTABLE CHANGEABLE MESSAGE SIGN
- ⊥ SIGN
- ⊕ TYPE II BARRICADE, DRUM, OR VERTICAL BARRICADE WITH MONODIRECTIONAL FLASHING LIGHT

**GENERAL NOTE:**

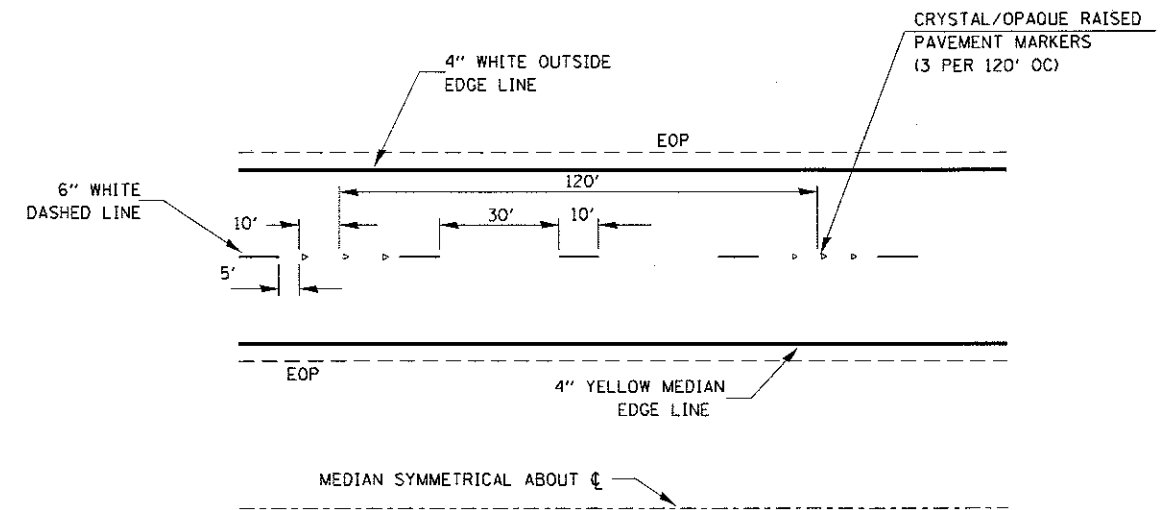
THIS STANDARD IS USED WHERE AT ANY TIME A LANE IS CLOSED ON A FREEWAY/EXPRESSWAY.  
 WHEN THE LEFT LANE IS CLOSED, LEFT LANE CLOSED SIGNS SHALL BE SUBSTITUTED FOR THE RIGHT LANE CLOSED SIGNS.  
 THE FIRST TWO SIGNS AND THE MESSAGE BOARD ARE STATIONARY. THE OTHER SIGNS AND ARROWBOARDS SHALL BE MOVED AS NECESSARY TO MAINTAIN THE REQUIRED DISTANCE FROM THE START OF THE LANE CLOSURE TAPER(S).  
 SEE SPECIAL PROVISIONS.

ALL DIMENSIONS ARE IN INCHES UNLESS OTHERWISE SHOWN.

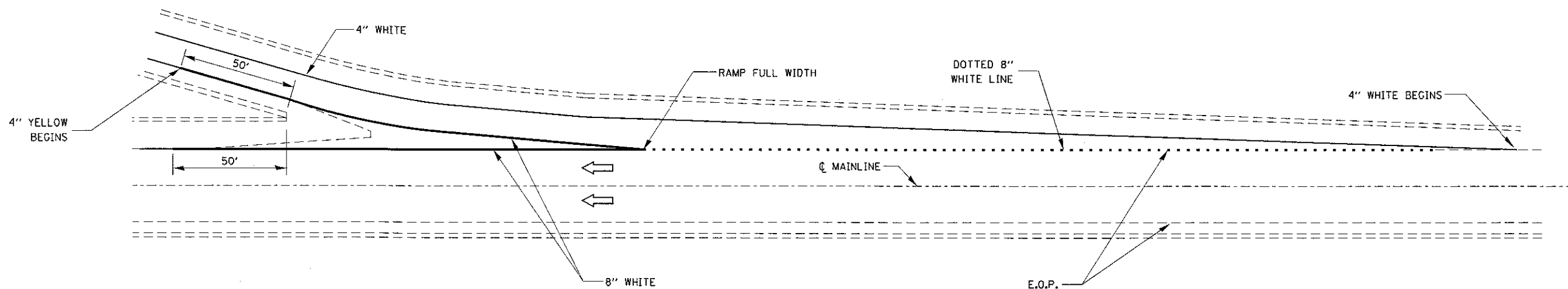
FILE NAME =	USER NAME = woodshankrj	DESIGNED - RW	REVISED -	<b>STATE OF ILLINOIS DEPARTMENT OF TRANSPORTATION</b>	<b>TRAFFIC CONTROL AND PROTECTION, STANDARD 701400 (SPECIAL)</b>	F.A.I. RTE.	SECTION	COUNTY	TOTAL SHEETS	SHEET NO.	
ph:\IL084EBIDINTEG.illinois.gov\FWIDOT\Documents\IDOT Offices\District 3\Projects\0364-DRAWING\084EBIDINTEG\66H34RW\title.dgn	DRAWN	66H34RW	REVISED -			39	5011-8/PP	LASALLE	15	12	
Default	PLOT SCALE = 100.0000' / in.	CHECKED - EP	REVISED -			SCALE: SHEET 1 OF 1 SHEETS STA. TO STA.					
	PLOT DATE = 5/17/2017	DATE - 3/22/2017	REVISED -			ILLINOIS FED. AID PROJECT CONTRACT NO. 66H34					



**TYPICAL PAVEMENT MARKING FOR ENTRANCE RAMP TERMINALS**

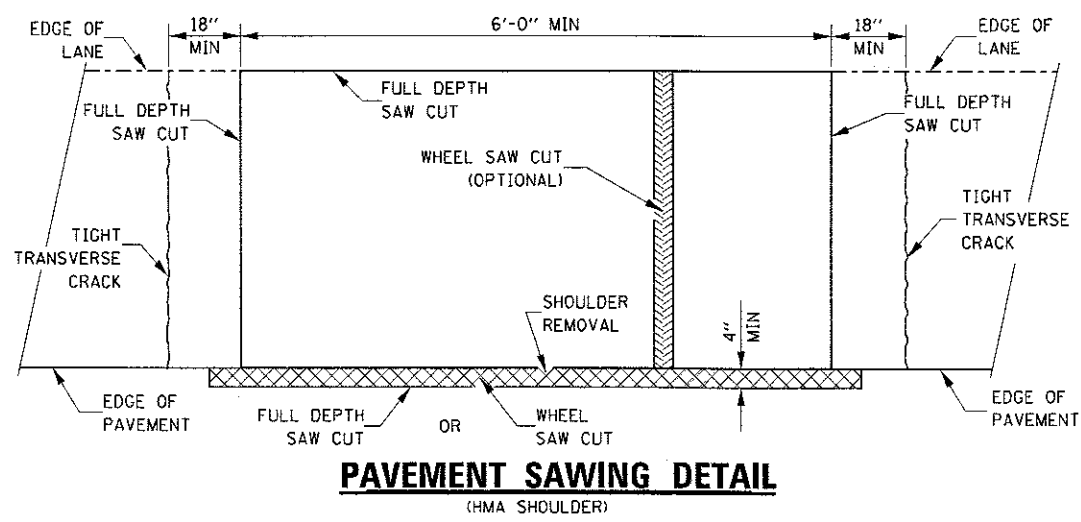


**TYPICAL PAVEMENT MARKINGS**

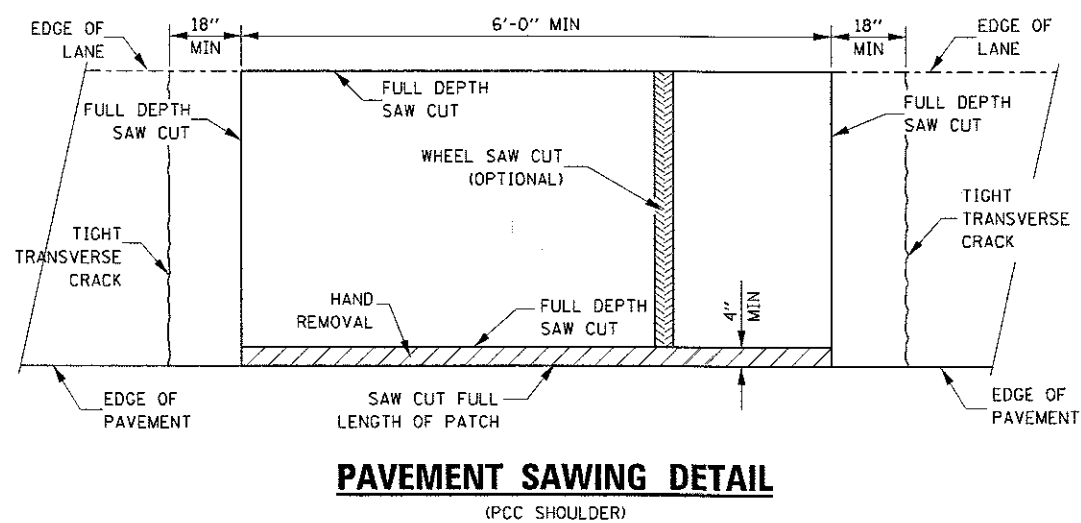


**TYPICAL PAVEMENT MARKINGS FOR EXIT RAMP TERMINALS**

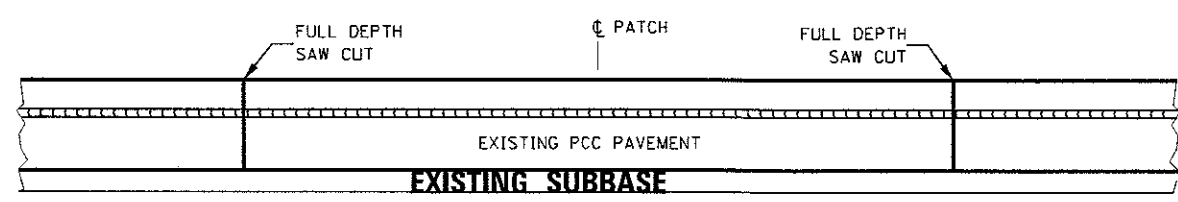
FILE NAME =	USER NAME = woodshenk1	DESIGNED - RW	REVISED -	<b>STATE OF ILLINOIS DEPARTMENT OF TRANSPORTATION</b>	<b>PAVEMENT MARKING DETAILS</b>		F.A.I. RTE. 39	SECTION 5011-81PP	COUNTY LASALLE	TOTAL SHEETS 15	SHEET NO. 13	
Default	Documents\IDOT Offices\District 3\Projects\0364\Drawings\66H34\RW\66H34RW.tbl.dgn	CHECKED - EP	REVISED -				SCALE:	SHEET 1 OF 1 SHEETS	STA. TO STA.	ILLINOIS FED. AID PROJECT		
	PLOT SCALE = 100.0000' / 1" =	DATE - 3/22/2017	REVISED -									
	PLOT DATE = 5/17/2017		REVISED -									



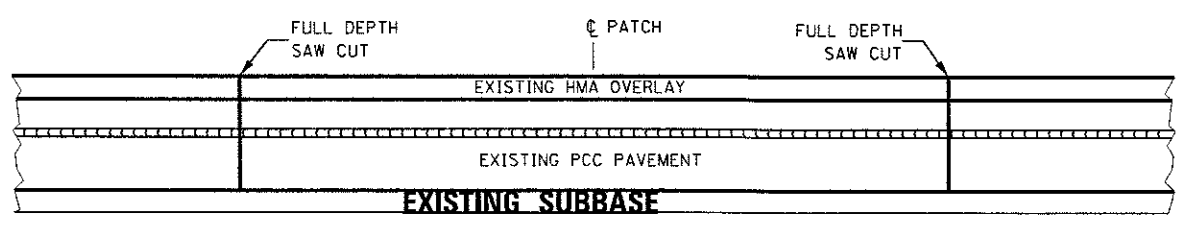
**PAVEMENT SAWING DETAIL**  
(HMA SHOULDER)



**PAVEMENT SAWING DETAIL**  
(PCC SHOULDER)

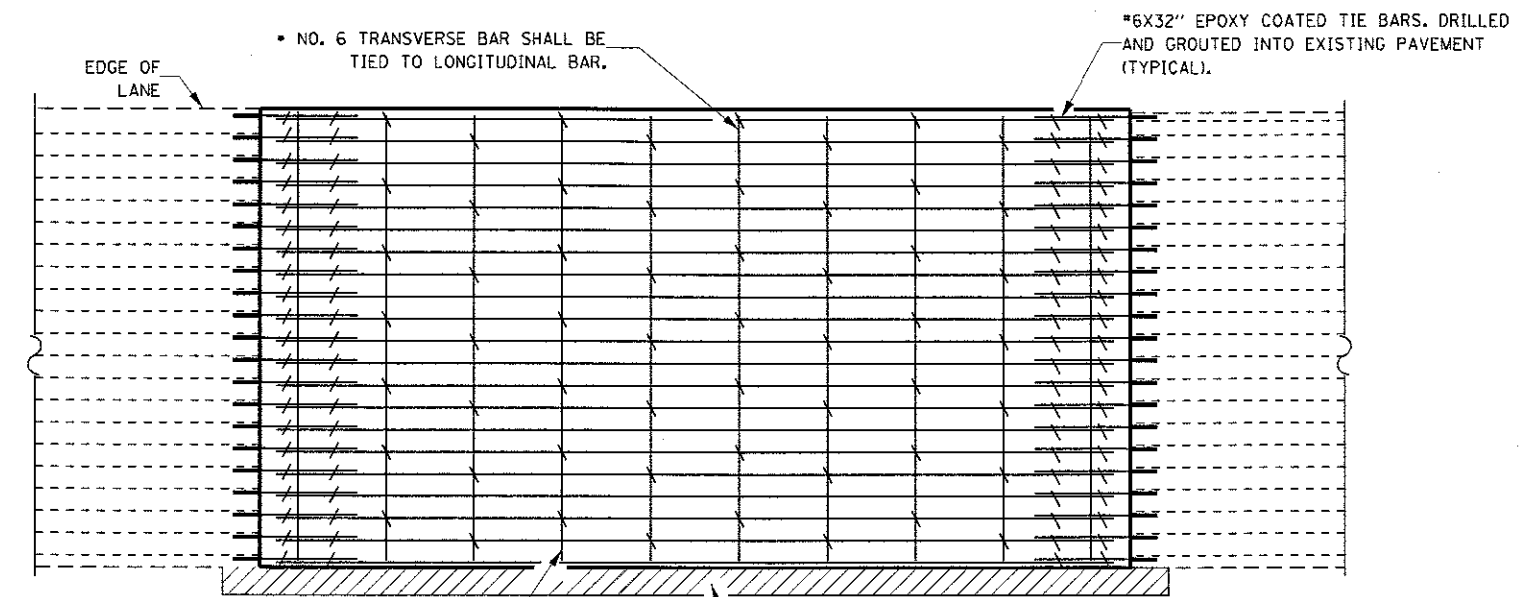


**EXISTING PAVEMENT WITHOUT HMA SURFACE**

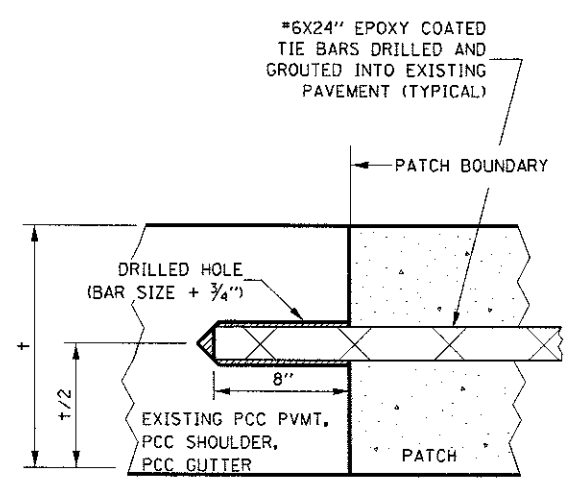


**EXISTING PAVEMENT WITH HMA SURFACE**

**PAVEMENT SAWING DETAIL FOR CLASS A PATCHING**  
**(CRC PAVEMENT)**



**PAVEMENT REINFORCEMENT DETAIL**



**LONGITUDINAL CONSTRUCTION JOINT**

PATCHES MORE THAN 20' IN LENGTH SHALL BE TIED TO ADJACENT PAVEMENT, PCC SHOULDERS OR PCC CURB AND GUTTER WITH #6x24" EPOXY COATED TIE BARS AT 24" CENTERS.

**NOTES:**

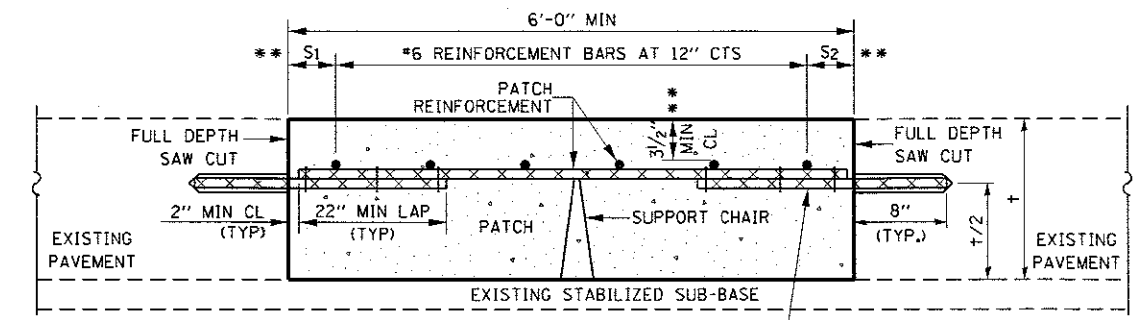
EXISTING LONGITUDINAL REINFORCEMENT SPACING: ± 6 7/8".

SPACING OF NEW LONGITUDINAL REINFORCEMENT AND NEW LONGITUDINAL TIE BARS SHALL MATCH SPACING OF EXISTING REINFORCEMENT AND SHALL BE TIED TOGETHER WITH A MINIMUM OF TWO TIES PER BAR.

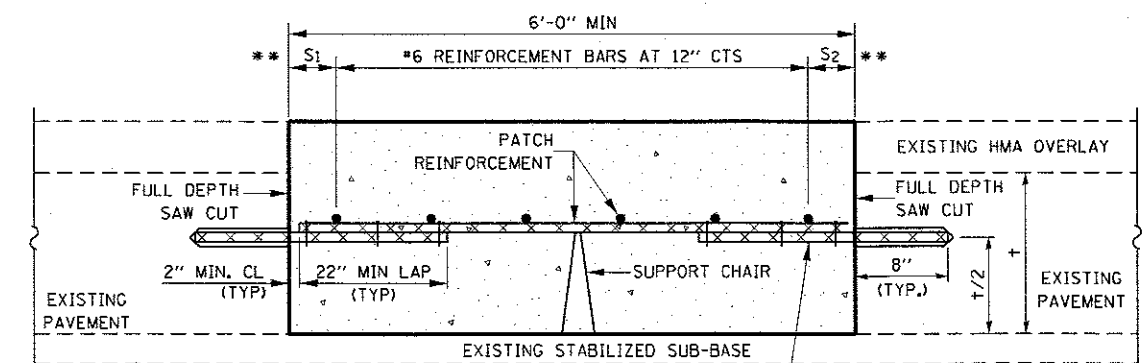
SUPPORT CHAIRS SHALL BE REQUIRED WHENEVER PATCH LENGTH EXCEEDS 6'-0"

\* EVERY THIRD INTERSECTION MUST BE TIED. WHEN THE MINIMUM CLEARANCE CANNOT BE OBTAINED WITH THE TRANSVERSE REBAR ON TOP, THEN THE TRANSVERSE REBAR SHALL BE TIED TO THE BOTTOM OF THE LONGITUDINAL REBAR.

\*\* VARIABLES WHERE S<sub>1</sub> AND S<sub>2</sub> ARE 2 1/2" MIN. AND 12" MAX.



**WITHOUT HMA OVERLAY**



**WITH HMA OVERLAY**

**PATCHING DETAIL FOR CLASS A PATCHING**  
**(CRC PAVEMENT)**

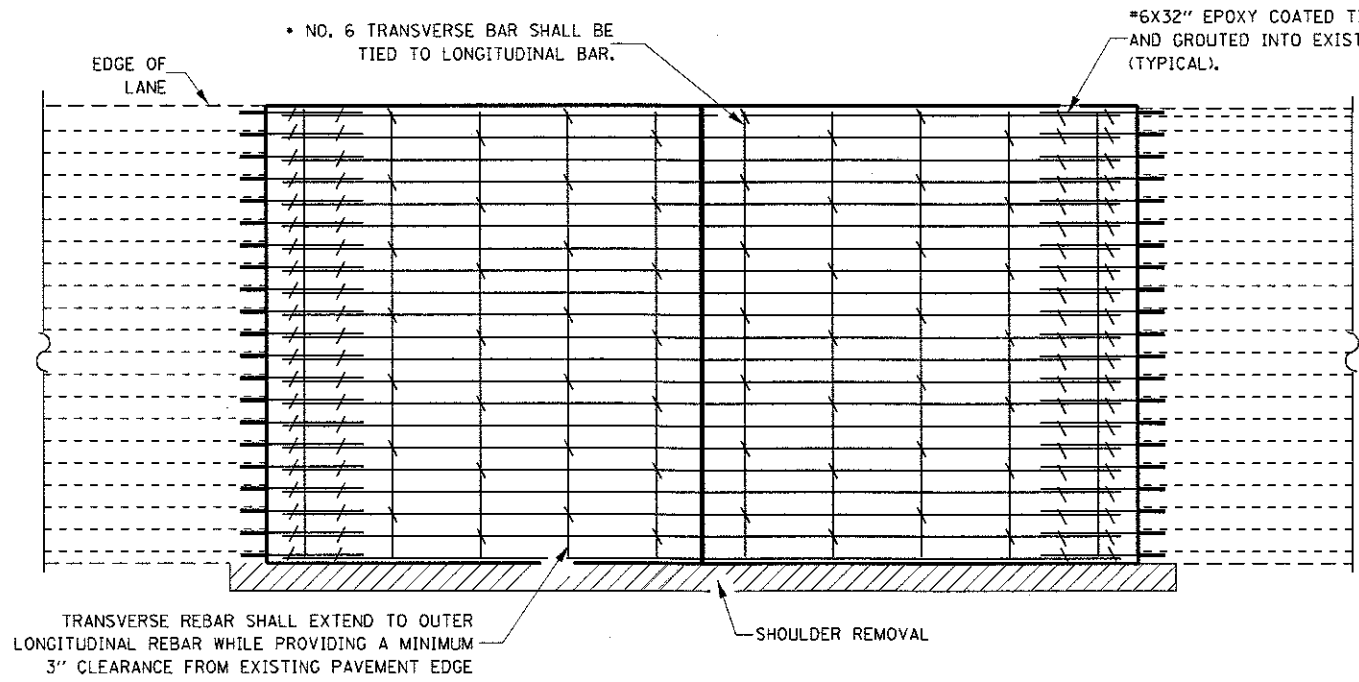
FILE NAME =	USER NAME = woodshenkr	DESIGNED - RW	REVISED -
pw\11084810\INTEC\Illinois.gov\PI\DDT\Documents\DOT Offices\District 3\Projects\036\Drawings\66H34\RW\11084810.dgn		CHECKED - EP	REVISED -
Default	PLOT SCALE = 100.0000' / in.	DATE - 3/22/2017	REVISED -

**STATE OF ILLINOIS**  
**DEPARTMENT OF TRANSPORTATION**

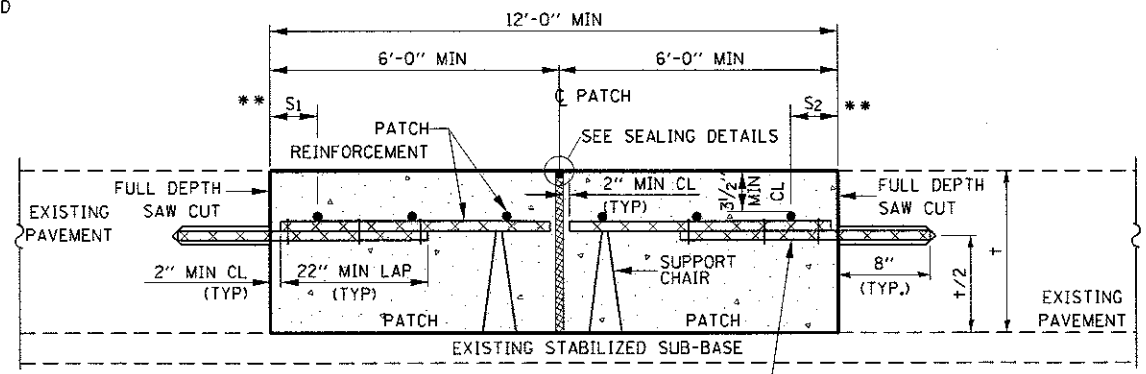
**CLASS A PATCHING DETAILS**

SCALE: SHEET 1 OF 2 SHEETS STA. TO STA.

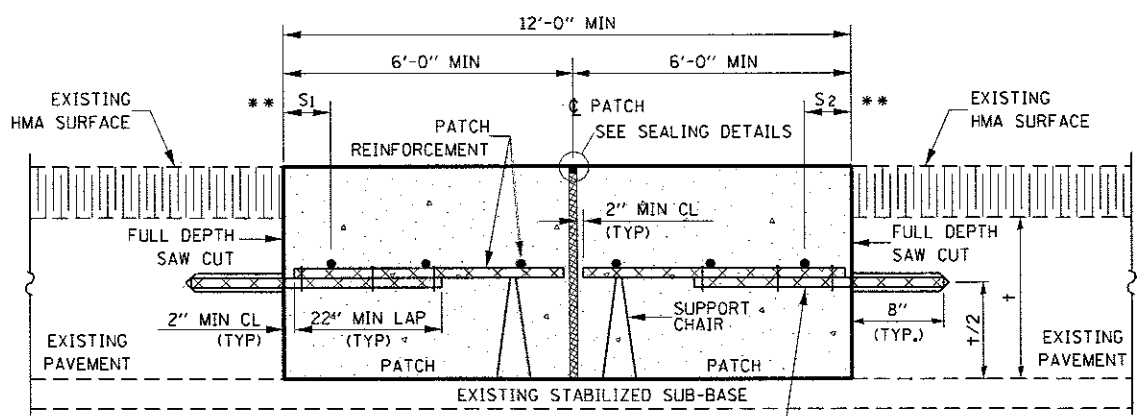
F.A.I. RTE.	SECTION	COUNTY	TOTAL SHEETS	SHEET NO.
39	501-8PP	LASALLE	15	14
			CONTRACT NO. 66H34	
ILLINOIS FED. AID PROJECT				



**PAVEMENT REINFORCEMENT DETAIL**

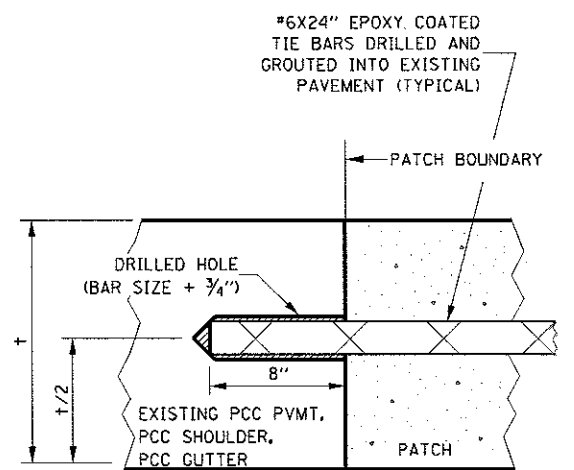


**WITHOUT HMA OVERLAY**



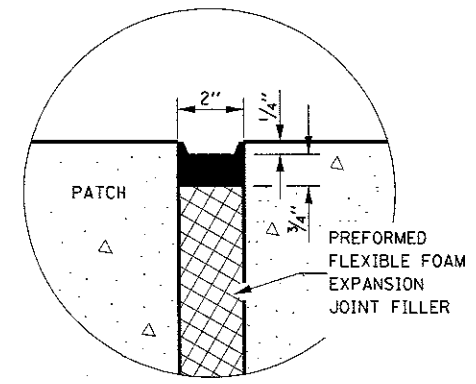
**WITH HMA OVERLAY**

**CLASS A PATCH WITH EXPANSION JOINT**

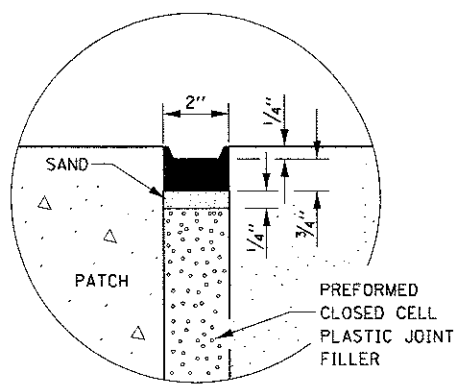


**LONGITUDINAL CONSTRUCTION JOINT**

PATCHES MORE THAN 20' IN LENGTH SHALL BE TIED TO ADJACENT PAVEMENT, PCC SHOULDERS OR PCC CURB AND GUTTER WITH \*6X24" EPOXY COATED TIE BARS AT 24" CENTERS.



**SEALING DETAIL**



**SEALING DETAIL**

- NOTES:**
- EXISTING LONGITUDINAL REINFORCEMENT SPACING:  $\pm 6\frac{1}{8}$ "
  - SPACING OF NEW LONGITUDINAL REINFORCEMENT AND NEW LONGITUDINAL TIE BARS SHALL MATCH SPACING OF EXISTING REINFORCEMENT AND SHALL BE TIED TOGETHER WITH A MINIMUM OF TWO TIES PER BAR.
  - SUPPORT CHAIRS SHALL BE REQUIRED WHENEVER PATCH LENGTH EXCEEDS 6'-0"
  - \* EVERY THIRD INTERSECTION MUST BE TIED, WHEN THE MINIMUM CLEARANCE CANNOT BE OBTAINED WITH THE TRANSVERSE REBAR ON TOP, THEN THE TRANSVERSE REBAR SHALL BE TIED TO THE BOTTOM OF THE LONGITUDINAL REBAR.
  - \*\* VARIABLES WHERE S<sub>1</sub> AND S<sub>2</sub> ARE 2½" MIN. AND 12" MAX.

FILE NAME =	USER NAME = woodshankr1	DESIGNED - RW	REVISED -	<b>STATE OF ILLINOIS DEPARTMENT OF TRANSPORTATION</b>	<b>CLASS A PATCHING DETAILS</b>	F.A.I. RTE.	SECTION	COUNTY	TOTAL SHEETS	SHEET NO.	
pw:\11084EB10INTEG\Illinois.gov\PIDOT\Documents\IDOT Offices\District 3\Projects\0365\DRAWING\66H34\RW\11084EB10INTEG.dgn	DATE = 3/22/2017	CHECKED - EP	REVISED -			39	501-81PP	LASALLE	15	15	
PLOT SCALE = 100.0000' / in.	DATE = 3/22/2017	DATE = 3/22/2017	REVISED -			SCALE: SHEET 2 OF 2 SHEETS STA. TO STA.		ILLINOIS FED. AID PROJECT			
PLOT DATE = 5/17/2017	DATE = 3/22/2017	DATE = 3/22/2017	REVISED -					CONTRACT NO. 66H34			