

STATE OF ILLINOIS
DEPARTMENT OF TRANSPORTATION

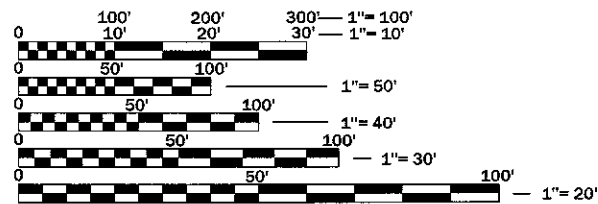
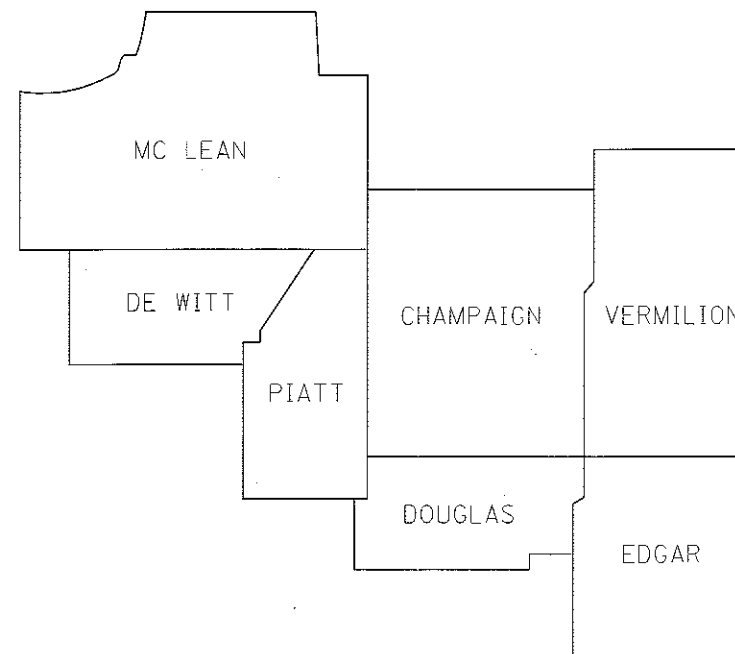
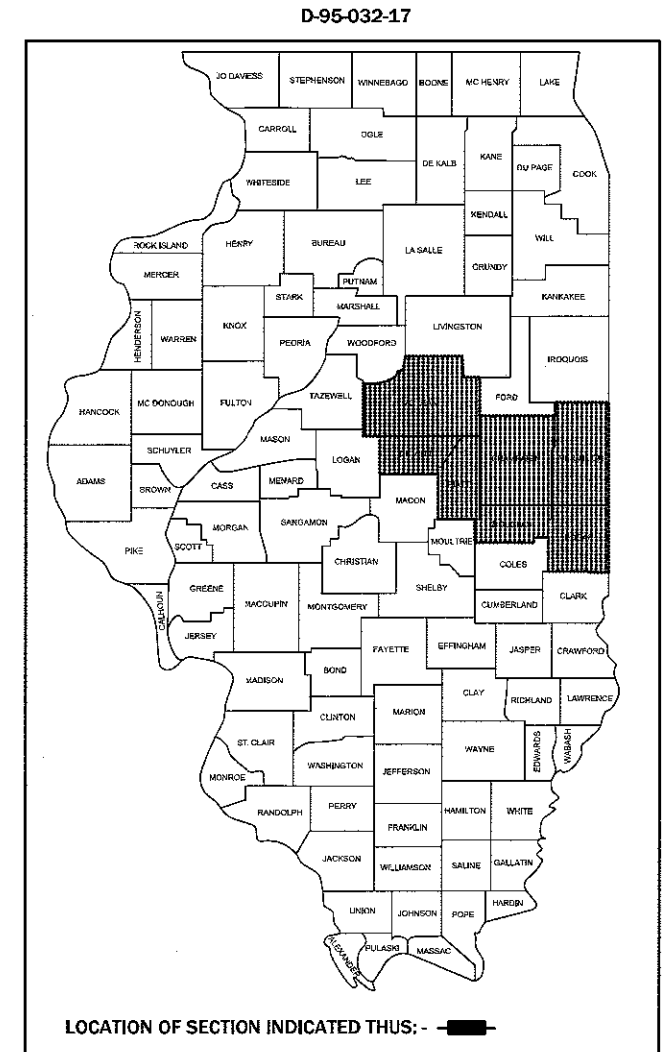
F.A. RTE.	SECTION	COUNTY	TOTAL SHEETS	SHEET NO.
VAR.	D5 TREE REM 2018-20	VARIOUS	3	1
		ILLINOIS	CONTRACT NO. 70C74	

FOR INDEX OF SHEETS, SEE SHEET NO. 2
FOR SUMMARY OF QUANTITIES, SEE SHEET NO. 3

PROPOSED HIGHWAY PLANS

VARIOUS ROUTES
SECTION D5 TREE REM 2018-20
TREE REMOVAL
VARIOUS COUNTIES
DISTRICT-WIDE ON-CALL TREE REMOVAL

C-95-032-17



FULL SIZE PLANS HAVE BEEN PREPARED USING STANDARD ENGINEERING SCALES. REDUCED SIZED PLANS WILL NOT CONFORM TO STANDARD SCALES. IN MAKING MEASUREMENTS ON REDUCED PLANS, THE ABOVE SCALES MAY BE USED.

J.U.L.I.E.
JOINT UTILITY LOCATION INFORMATION FOR EXCAVATION
1-800-892-0123
OR 811

PROJECT ENGINEER: NANCY FASIG
PHONE NUMBER: (217) 465-4181

CONTRACT NO. 70C74

STATE OF ILLINOIS
DEPARTMENT OF TRANSPORTATION

SUBMITTED MAY 11 2017
Kensil A. Savetti REGIONAL ENGINEER

June 30 2017
Maura M. Adonis PE ENGINEER OF DESIGN AND ENVIRONMENT

June 30 2017
Archie [Signature] DIRECTOR OF PROGRAM DEVELOPMENT

PRINTED BY THE AUTHORITY
OF THE STATE OF ILLINOIS

INDEX OF SHEETS

SHEET NO.	DESCRIPTION
1	COVER
2	INDEX, STANDARDS, AND GENERAL NOTES
3	SUMMARY OF QUANTITIES

HIGHWAY STANDARDS

STANDARD NO.	DESCRIPTION
001006	DECIMAL OF AN INCH AND OF A FOOT
701001-02	OFF-ROAD OPERATIONS, 2L, 2W, MORE THAN 15' (4.5 m) AWAY
701006-05	OFF-RD OPERATIONS, 2L, 2W, 15' (4.5 m) TO 24" (600 mm) FROM PAVEMENT EDGE
701101-05	OFF-ROAD OPERATIONS, MULTILANE, 15' (4.5M) TO 24" (600MM) FROM PAVEMENT EDGE
701106-02	OFF-ROAD OPERATIONS, MULTILANE, MORE THAN 15' (4.5 M) AWAY
701201-04	LANE CLOSURE, 2L, 2W, DAY ONLY, FOR SPEEDS \geq 45 MPH
701301-04	LANE CLOSURE, 2L, 2W, SHORT TIME OPERATIONS
701400-09	APPROACH TO LANE CLOSURE, FREEWAY/EXPRESSWAY
701406-11	LANE CLOSURE, FREEWAY/EXPRESSWAY, DAY OPERATIONS ONLY
701421-08	LANE CLOSURE, MULTILANE, DAY OPERATIONS ONLY, FOR SPEEDS \geq 45 MPH TO 55 MPH
701428-01	TRAFFIC CONTROL SETUP AND REMOVAL FREEWAY/EXPRESSWAY
701456-04	PARTIAL EXIT RAMP CLOSURE FREEWAY/EXPRESSWAY
701501-06	URBAN LANE CLOSURE, 2L, 2W, UNDIVIDED
701502-07	URBAN LANE CLOSURE, 2L, 2W WITH BIDIRECTIONAL LEFT TURN LANE
701601-09	URBAN LANE CLOSURE, MULTILANE, 1W OR 2W WITH NONTRAVERSABLE MEDIAN
701602-08	URBAN LANE CLOSURE, MULTILANE, 2W WITH BIDIRECTIONAL LEFT TURN LANE
701606-10	URBAN SINGLE LANE CLOSURE, MULTILANE, 2W WITH MOUNTABLE MEDIAN
701701-10	URBAN LANE CLOSURE, MULTILANE INTERSECTION..
701801-06	SIDEWALK, CORNER OR CROSSWALK CLOSURE
701901-06	TRAFFIC CONTROL DEVICES

GENERAL NOTES

G.N.-100

ENGLISH UNITS OF MEASUREMENT SHALL GOVERN OVER AND SUPERSEDE ANY METRIC UNITS SHOWN IN THIS CONTRACT. WHERE INCLUDED, METRIC UNITS ARE FOR INFORMATION ONLY.

NO COMMITMENTS.

FILE NAME =	USER NAME = ceafoc2jfd	DESIGNED -	REVISED -
pw21104EBIDINTEG.illinois.gov\PW\DOT\Documents\DOT Office\Contract 51\Projects\0570C74\CADD\Drawings\0570C74\Drawings.dgn		CHECKED -	REVISED -
SMODELNAMES	PLOT DATE = 5/15/2017	DATE -	REVISED -

**STATE OF ILLINOIS
DEPARTMENT OF TRANSPORTATION**

INDEX OF SHEETS, HIGHWAY STANDARDS, & GENERAL NOTES			
SCALE:	SHEET 1	OF 1	SHEETS STA. TO STA.

F.A. RTE.	SECTION	COUNTY	TOTAL SHEETS	SHEET NO.
VAR.	D5 TREE REM 2018-20	VARIOUS	3	2
CONTRACT NO. 70C74				
ILLINOIS FED. AID PROJECT				

RURAL

LOCATION OF WORK:

VARIOUS ROUTES

VARIOUS COUNTIES

FUNDING BREAKOUT:

100% STATE ✓

CONSTRUCTION TYPE CODE:

0031 ✓

CODE NO.	ITEM	UNIT	TOTAL QUANTITY	
20100110	TREE REMOVAL (6 TO 15 UNITS DIAMETER)	UNIT	800.0	800.0
20100210	TREE REMOVAL (OVER 15 UNITS DIAMETER)	UNIT	2,400.0	2,400.0
67100100	MOBILIZATION	L SUM	1.0	1.0
X7010216	TRAFFIC CONTROL AND PROTECTION, (SPECIAL)	L SUM	1.0	1.0
* DENOTES SPECIALTY ITEM				

FILE NAME =	USER NAME = ceartockj	DESIGNED -	REVISED -
pw\01\084EBID\INTEG. \Illinois.gov\PWDOT\Documents\DOT\Office\District 5\Projects\ID570C74\CAD\Drawings\DWG\DRAWINGS.dgn		CHECKED -	REVISED -
SMODELNAME	PLOT DATE = 5/15/2017	DATE -	REVISED -

STATE OF ILLINOIS
DEPARTMENT OF TRANSPORTATION

SUMMARY OF QUANTITIES

SCALE: SHEET 1 OF 1 SHEETS STA. TO STA.

F.A. RTE.	SECTION	COUNTY	TOTAL SHEETS	SHEET NO.
VAR.	D5 TREE REM 2018-20	VARIOUS	3	3
CONTRACT NO. 70C74				
ILLINOIS FED. AID PROJECT				

REV