

STATE OF ILLINOIS
DEPARTMENT OF TRANSPORTATION

F.A.I. RTE.	SECTION	COUNTY	TOTAL SHEETS	SHEET NO.
74	(92-10)PP	VERMILION	8	1
		ILLINOIS	CONTRACT NO. 70C96	

FOR INDEX OF SHEETS, SEE SHEET NO. 2
FOR LOCATION MAP, SEE SHEET NO. 3

PROPOSED HIGHWAY PLANS

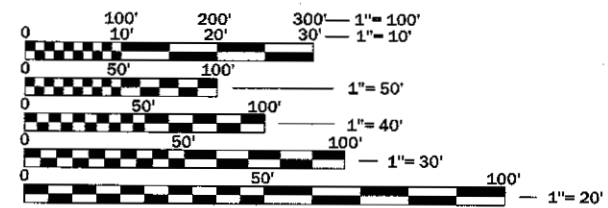
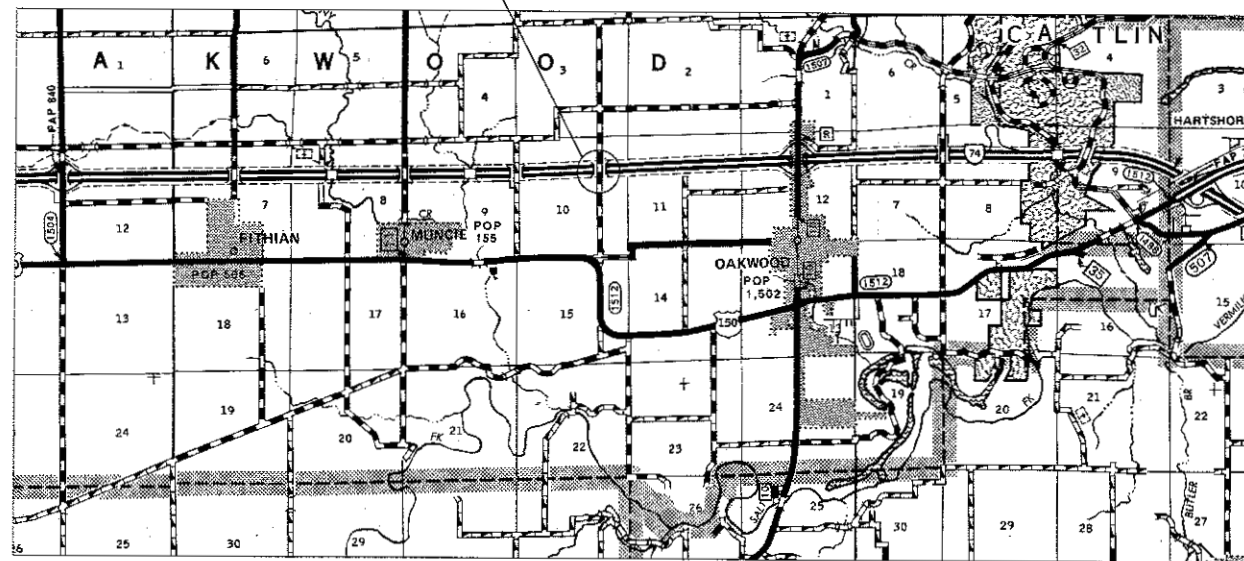
F.A.I. ROUTE 74 (I-74)
SECTION (92-10)PP
PROJECT NHPP-0074 (327)
PATCHING
VERMILION COUNTY

CURRENT ADT
25,800 (2017)

C-95-051-17



SN 092-0148
STA 1411+12.00 to 1416+62.00

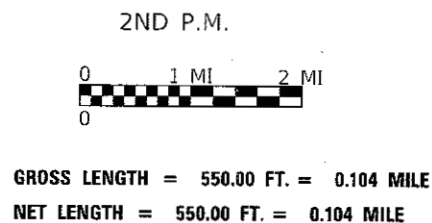


FULL SIZE PLANS HAVE BEEN PREPARED USING STANDARD ENGINEERING SCALES. REDUCED SIZED PLANS WILL NOT CONFORM TO STANDARD SCALES. IN MAKING MEASUREMENTS ON REDUCED PLANS, THE ABOVE SCALES MAY BE USED.

J.U.L.I.E.
JOINT UTILITY LOCATION INFORMATION FOR EXCAVATION
1-800-892-0123
OR 811 OAKWOOD TOWNSHIP

PROJECT ENGINEER: JASON STULTS
PHONE NUMBER: (217)465-4181

CONTRACT NO. 70C96



STATE OF ILLINOIS
DEPARTMENT OF TRANSPORTATION

SUBMITTED May 17 2017
Kensel A. Sawatzki
REGIONAL ENGINEER

June 30 2017
Muhammad M. Abbas P.E.
ENGINEER OF DESIGN AND ENVIRONMENT

June 30 2017
Annelle C. [Signature]
DIRECTOR OF PROGRAM DEVELOPMENT

PRINTED BY THE AUTHORITY
OF THE STATE OF ILLINOIS

INDEX OF SHEETS

SHEET NO.	DESCRIPTION
1	COVER SHEET
2	INDEX OF SHEETS AND LIST OF STANDARDS
2	GENERAL NOTES
3	SUMMARY OF QUANTITIES
4-5	TYPICAL CROSS SECTIONS
6	SCHEDULE OF QUANTITIES
7	PLAN SHEET
8	DETAIL OF PAVEMENT MARKING (INTERSTATE & MULTILANE APPLICATIONS)

LIST OF STANDARDS

STANDARD NO.	DESCRIPTION
000001-06	STANDARD SYMBOLS, ABBREVIATIONS AND PATTERNS
001001-02	AREAS OF REINFORCEMENT BARS
001006	DECIMAL OF AN INCH AND OF A FOOT
420001-08	PAVEMENT JOINTS
420701-03	PAVEMENT FABRIC
442101-07	CLASS B PATCHES
701101-05	OFF-ROAD OPERATIONS, MULTILANE, 15' (4.5M) TO 24" (600 MM) FROM PAVEMENT EDGE
701400-09	APPROACH TO LANE CLOSURE, FREEWAY / EXPRESSWAY
701401-10	LANE CLOSURE, FREEWAY OR EXPRESSWAY
701426-09	LANE CLOSURE, MULTILANE, INTERMITTENT OR MOVING OPERATION, FOR SPEEDS < 45 MPH
701428-01	TRAFFIC CONTROL SET-UP AND REMOVAL FREEWAY/EXPRESSWAY
701901-06	TRAFFIC CONTROL DEVICES
780001-05	TYPICAL PAVEMENT MARKINGS

COMMITMENTS

THERE ARE NO COMMITMENTS FOR THIS PROJECT.

GENERAL NOTES

- G.N.-100
ENGLISH UNITS OF MEASUREMENT SHALL GOVERN OVER AND SUPERSEDE ANY METRIC UNITS SHOWN IN THIS CONTRACT. WHERE INCLUDED, METRIC UNITS ARE FOR INFORMATION ONLY.
- G.N.-100A
ELECTRONIC FILES AND/OR ELECTRONIC SURVEY INFORMATION INCLUDING CADD FILES WILL NOT BE AVAILABLE TO THE CONTRACTOR.
- G.N.-442B – PATCHING SCHEDULES
THE PATCHING SCHEDULES INCLUDED IN THE PLANS REPRESENT THE BEST INFORMATION AVAILABLE AT THE TIME OF COMPLETION OF THE PLANS FOR LETTING. VARIATIONS IN LOCATION AND SIZES OF BOTH FULL-DEPTH AND PARTIAL-DEPTH PATCHES MAY OCCUR.
- G.N.-703A
SHORT TERM PAVEMENT MARKING SHALL BE APPLIED TO THE PAVEMENT AFTER ANY OF THE FOLLOWING: COLD MILING AND/OR PLACING BITUMINOUS MATERIALS (TACK COAT), LEVELING BINDER (MACHINE METHOD), BINDER AND SURFACE COURSES, PAVEMENT PATCHING. SHORT TERM PAVEMENT MARKING PLACED ON THE SURFACE SHALL COINCIDE WITH THE FINAL PAVEMENT STRIPING. SHORT TERM PAVEMENT MARKING PLACED PRIOR TO THE SURFACE SHALL COINCIDE WITH THE EXISTING PAVEMENT MARKINGS. USE 4 FEET PER 40 FEET (OR 10% PER STATION).
- G.N.-1004.01
COARSE AGGREGATE GRADATION CA-10 MAY BE USED WHENEVER COARSE AGGREGATE CA-6 IS SPECIFIED IN THE STANDARD SPECIFICATIONS.

FILE NAME =	USER NAME = plersonbr	DESIGNED -	REVISED -	STATE OF ILLINOIS DEPARTMENT OF TRANSPORTATION	INDEX OF SHEETS, LIST OF STANDARDS & GENERAL NOTES	F.A.I. RTE.	SECTION	COUNTY	TOTAL SHEETS	SHEET NO.
p:\VIL\084E9\B\INTEC\Illinois.gov\PHIDOT\Documents\B...	C:\Users\plersonbr\Documents\Projects\0570C96\CA\0\anal\CAD\sheet\0570C96\0570C96.dgn	DRAWN	REVISED			74	(92-10)PP	VERMILION	8	2
SMODELNAME	PLOT SCALE = 40,0000' / in.	CHECKED -	REVISED -		SCALE: NONE	SHEET 1	OF 1	SHEETS	STA.	TO STA.
	PLOT DATE = 5/17/2017	DATE -	REVISED -							ILLINOIS FED. AID PROJECT
										<i>REV</i>

SUMMARY OF QUANTITIES

LOCATION OF WORK: FA1 74
 VERMILION CO
 RURAL ✓
 90% FED ✓
 10% STATE ✓
 CONSTRUCTION TYPE CODE: 0005 ✓

CODE NO	ITEM	UNIT	TOTAL QUANTITY
44200050	WELDED WIRE REINFORCEMENT	SQ YD	2355.0
44200976	CLASS B PATCHES, TYPE IV, 10 INCH	SQ YD	2355.0
44201299	DOWEL BARS 1 1/2"	EACH	1230.0
44213200	SAW CUTS	FOOT	2812.0
44213204	TIE BARS 3/4"	EACH	451.0
67100100	MOBILIZATION	LSUM	1.0
70100800	TRAFFIC CONTROL AND PROTECTION, STANDARD 701401	LSUM	1.0
70103815	TRAFFIC CONTROL SURVEILLANCE	CAL DA	20.0
70300100	SHORT TERM PAVEMENT MARKING	FOOT	123.0
70300150	SHORT TERM PAVEMENT MARKING REMOVAL	SQ FT	41.0
* 78001110	PAINT PAVEMENT MARKING - LINE 4"	FOOT	2846.0
X7015005	CHANGEABLE MESSAGE SIGN	CAL DA	14.0

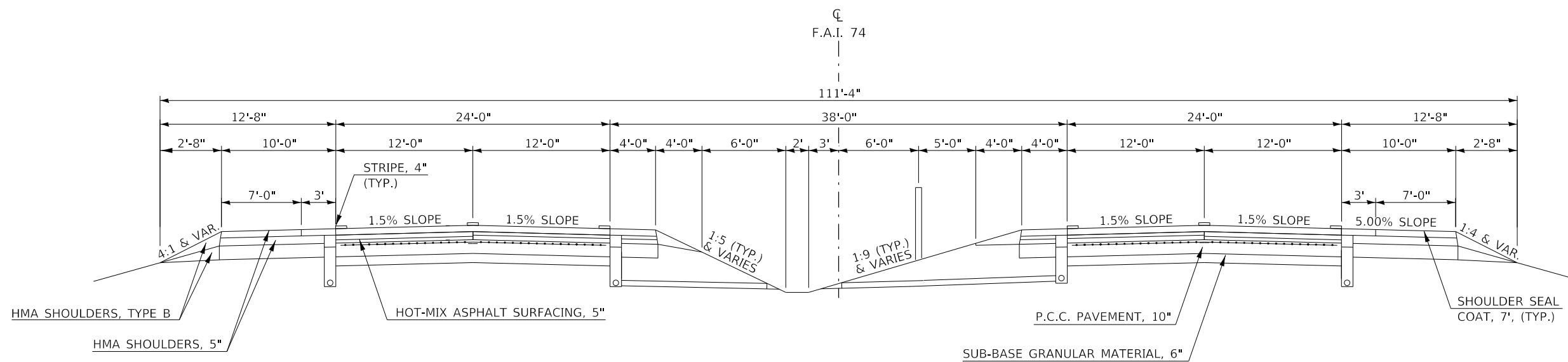
12 * SPECIALTY ITEMS

FILE NAME =	USER NAME = p1ersonbr	DESIGNED -	REVISED -	STATE OF ILLINOIS DEPARTMENT OF TRANSPORTATION	SUMMARY OF QUANTITIES	F.A.I. RTE.	SECTION	COUNTY	TOTAL SHEETS	SHEET NO.	
plg\ill_08\FEB\INTEG\Illinois.gov\PMDO\Documents\MDT\Illinois\District 5\Projects\0570C96\CAD\Cata\CAD\sheet\DS70DRAWING.dwg	DT Office\District 5\Projects\0570C96\CAD\Cata\CAD\sheet\DS70DRAWING.dwg	CHECKED -	REVISED -			74	(92-10)PP	VERMILION	8	3	
SMODELNAME\$	PLOT SCALE = 40.0000' / 1 in.	DATE -	REVISED -			CONTRACT NO. 70C96					
	PLOT DATE = 5/18/2017					ILLINOIS FED. AID PROJECT					

REV

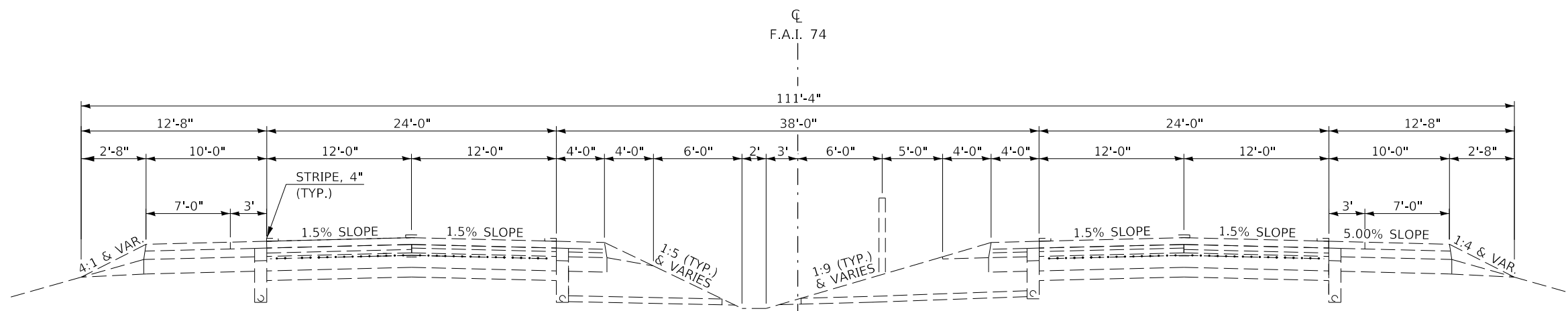
EXISTING TYPICAL CROSS SECTION

STATION 1300+00.00 TO STATION 1500+00.00



PROPOSED TYPICAL CROSS SECTION

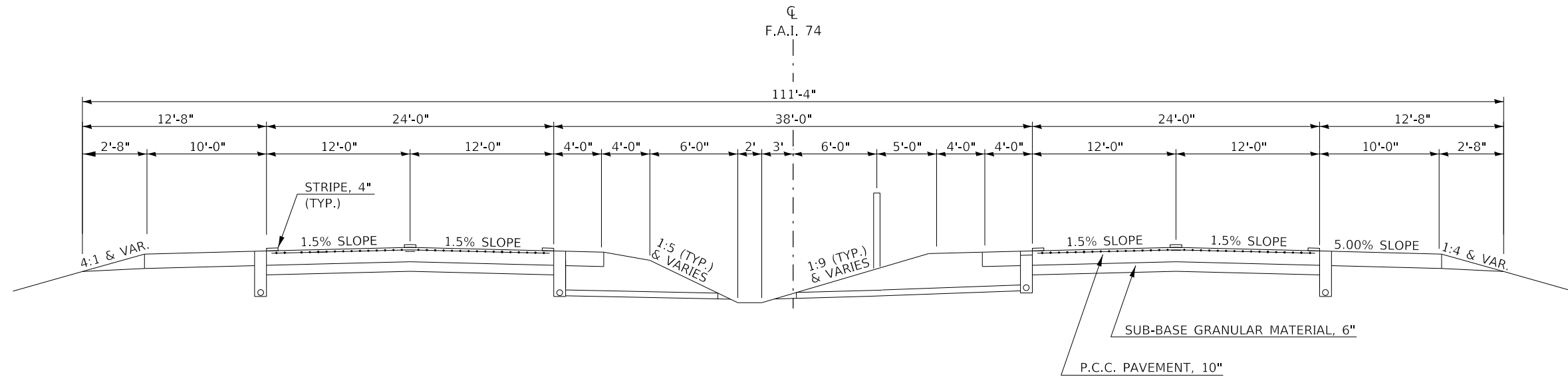
STATION 1300+00.00 TO STATION 1500+00.00



FILE NAME =	USER NAME = plersonbr	DESIGNED -	REVISED -	STATE OF ILLINOIS DEPARTMENT OF TRANSPORTATION	TYPICAL CROSS SECTIONS				F.A.I. RTE.	SECTION	COUNTY	TOTAL SHEETS	SHEET NO.		
DRAWN: [unclear]					SCALE: NONE	SHEET 1	OF 2	SHEETS	STA.	TO STA.	74	(92-10)PP	VERMILION	8	4
PLOT SCALE = 40,0000' / 1" =					CHECKED -	CONTRACT NO. 70C96									
DATE -					REVISIED -	ILLINOIS FED. AID PROJECT									

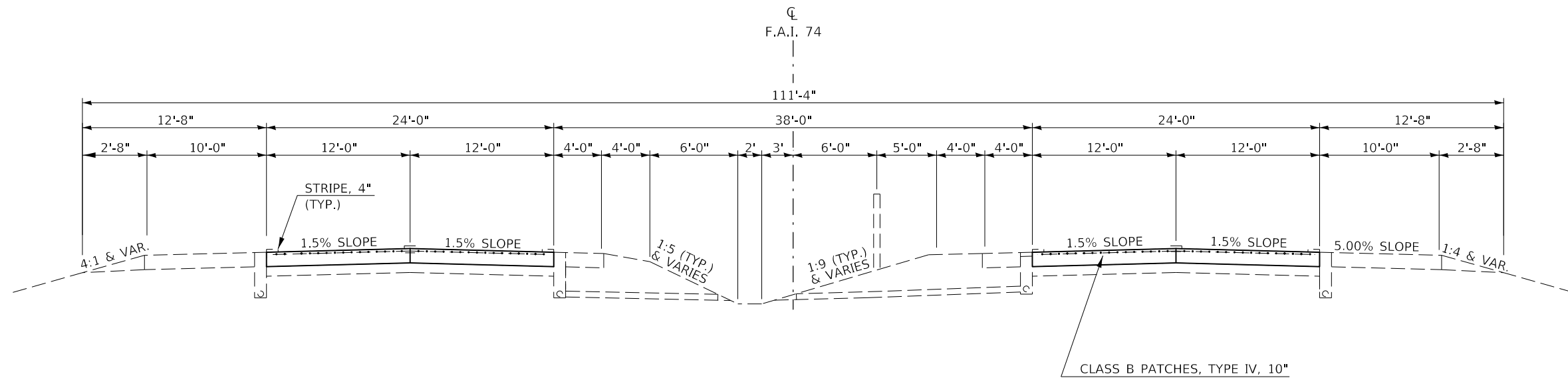
EXISTING TYPICAL CROSS SECTION

STATION 1411+12.00 TO STATION 1416+62.00 (E.B.)
 STATION 1411+92.00 TO STATION 1415+44.00 (W.B. - DL)
 STATION 1411+92.00 TO STATION 1415+06.00 (W.B. - PL)



PROPOSED TYPICAL CROSS SECTION

STATION 1411+12.00 TO STATION 1416+62.00 (E.B.)
 STATION 1411+92.00 TO STATION 1415+44.00 (W.B. - DL)
 STATION 1411+92.00 TO STATION 1415+06.00 (W.B. - PL)



FILE NAME =	USER NAME = plersontr	DESIGNED -	REVISED -	STATE OF ILLINOIS DEPARTMENT OF TRANSPORTATION	TYPICAL CROSS SECTIONS			F.A.I. 74	SECTION (92-10)PP	COUNTY VERMILION	TOTAL SHEETS 8	SHEET NO. 5			
MODEL NAMES	PLOT SCALE = 40,0000' / 1"	CHECKED -	REVISED -					SCALE: NONE	SHEET 2	OF 2	SHEETS	STA.	TO STA.	CONTRACT NO. 70C96	
	PLOT DATE = 5/16/2017	DATE -	REVISED -					ILLINOIS FED. AID PROJECT							

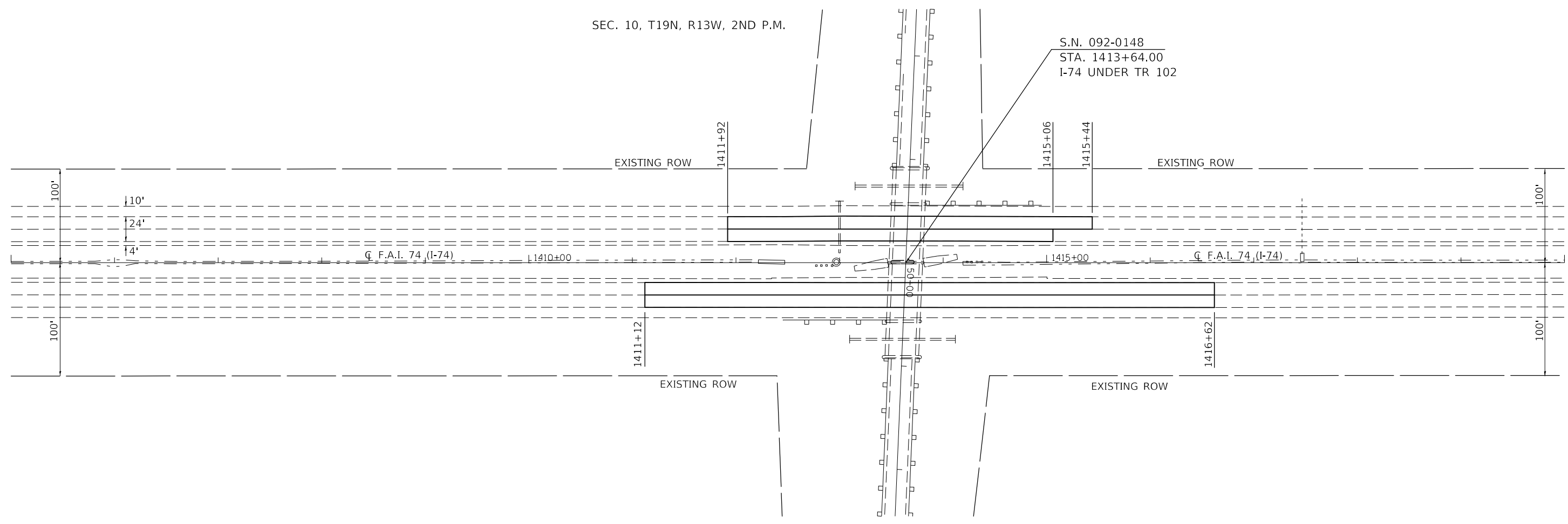
SCHEDULE OF QUANTITIES

CLASS A PATCHING

STATION	DIRECTION	LANE	LENGTH (ft)	WIDTH (ft)	PATCH AREA				DOWEL BARS 1 1/2" 44201299 (each)	SAW CUTS 44213200 (ft)	TIE BARS 3/4" 44213204 (each)	WELD WIRE REINFORCE 44200050 (sq. yd)
					TYPE I 10.0" (sq. yd)	TYPE II 10.0" (sq. yd)	TYPE III 10.0" (sq. yd)	TYPE IV 10.0" (sq. yd)				
1411+12.00	EB	DL	550	12	0.0	0.0	0.0	733.3	380	1136.0	275	733.3
1411+12.00	EB	PL	550	12	0.0	0.0	0.0	733.3	380	586.0	0	733.3
1411+92.00	WB	DL	352	12	0.0	0.0	0.0	469.3	250	740.0	176	469.3
1411+92.00	WB	PL	314	12	0.0	0.0	0.0	418.7	220	350.0	0	418.7
SUB TOTALS					0.0 (sq. yd)	0.0 (sq. yd)	0.0 (sq. yd)	2354.7 (sq. yd)	1230.0 (each)	2812.0 (ft)	451.0 (each)	2354.7 (sq. yd)
FINAL TOTALS					0.0 (sq. yd)	0.0 (sq. yd)	0.0 (sq. yd)	2355.0 (sq. yd)	1230.0 (each)	2812.0 (ft)	451.0 (each)	2355.0 (sq. yd)

PAVEMENT MARKING

STATION	DIRECTION	LANE	LENGTH (ft)	WIDTH (ft)	PAINT PAVEMENT MARK - LINE 4"		SHORT TERM PAVEMENT MARK 70300100 (ft)	SHORT TERM PAVEMENT MARK REM 70300150 (sq. ft)
					4" WHITE 78001110 (ft)	4" YELLOW (ft)		
1411+12.00	EB	DL	550	12	550.0	0.0	22	7
1411+12.00	EB	PL	550	12	687.5	550.0	55	18
1411+92.00	WB	DL	352	12	352.0	0.0	14	5
1411+92.00	WB	PL	314	12	392.5	314.0	31	10
SUB TOTALS					1982.0 (ft)	864.0 (ft)	122.5 (ft)	40.8 (sq. ft)
FINAL TOTALS					1982.0 (ft)	864.0 (ft)	123.0 (ft)	41.0 (sq. ft)



FILE NAME =	USER NAME = plersontr	DESIGNED -	REVISED -
p:\04\EBID\INTEG\Illinois.gov\PWIDOT\Documents\DOT Offices\District 5\Projects\D570C96\CADD\CAD\Sheets\D570C96\Plan.dgn		DRAWN -	REVISED -
	PLOT SCALE = 100,0000' / in.	CHECKED -	REVISED -
\$MODELNAME\$	PLOT DATE = 5/16/2017	DATE -	REVISED -

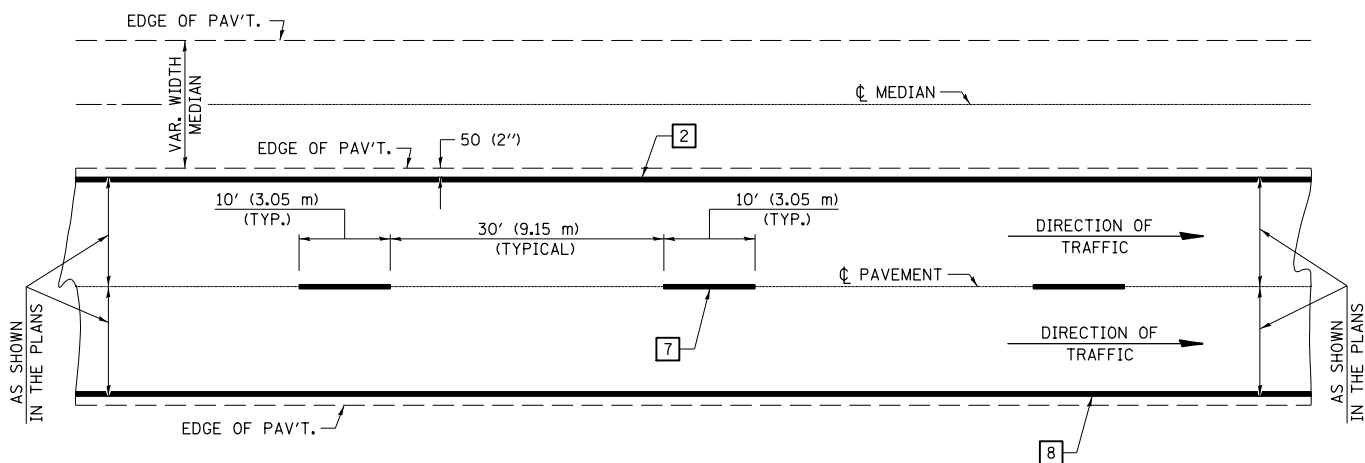
**STATE OF ILLINOIS
DEPARTMENT OF TRANSPORTATION**

PLAN SHEET - F.A.I. 74

SCALE: 1" = 50' SHEET 1 OF 1 SHEETS STA. 1045+00.00 TO STA. 1420+00.00

F.A.I. RTE.	SECTION	COUNTY	TOTAL SHEETS	SHEET NO.
74	(92-10)PP	VERMILION	8	7
CONTRACT NO. 70C96				
ILLINOIS FED. AID PROJECT				

CENTERLINE INTERSTATE OR MULTI-LANE TWO WAY DIVIDED HIGHWAY

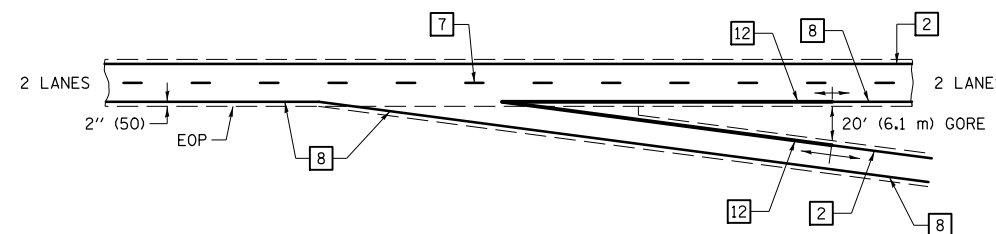


NOTE: PAVEMENT MARKINGS ARE TO BE EXTENDED THROUGH OMISSIONS WHEN APPLICABLE.

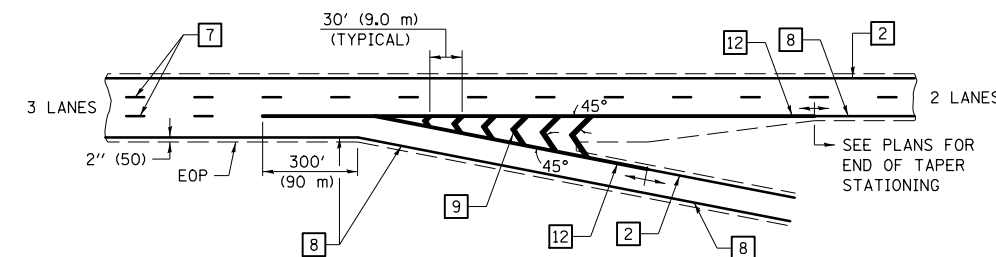
NOTE: SEE ARTICLES 780.04 & 781.03 FOR LOCATION OF STRIPES AND MARKERS RELATIVE TO EDGES OR JOINTS.

FOR RAISED REFLECTIVE PAVEMENT MARKERS, REFER TO STANDARD 781001.

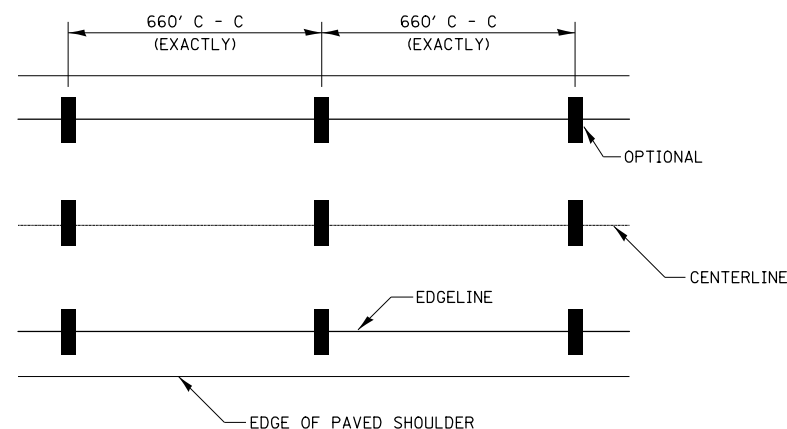
TYPICAL EXIT RAMP TERMINAL



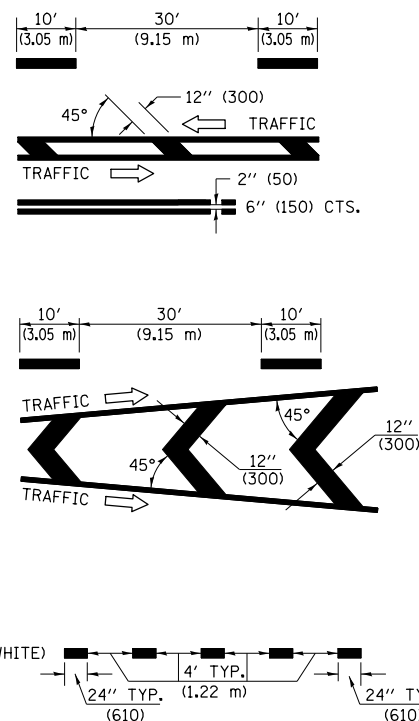
EXIT RAMP TERMINAL with EXCLUSIVE (auxiliary) LANE



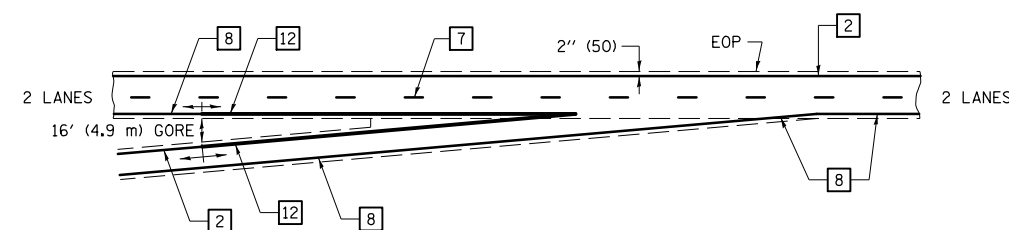
TYPICAL PAVEMENT MARKING LEGEND



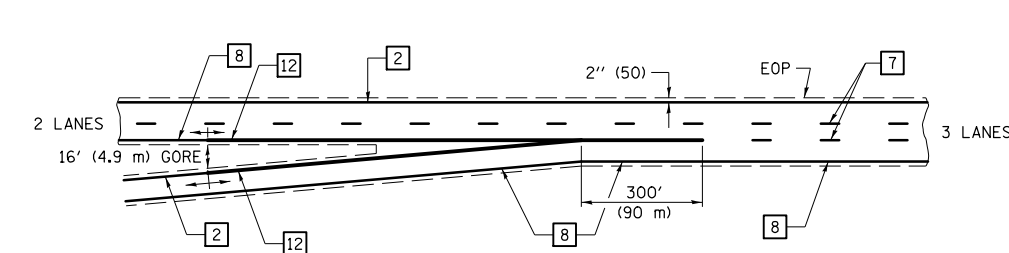
- 1 4" (100) SKIP-DASH (YELLOW)
- 2 4" (100) SOLID (YELLOW)
- 3 12" (300) DIAGONAL (YELLOW)
- 4 4" (100) DOUBLE YELLOW (NARROW)
- 5 RESERVED
- 6 RESERVED
- 7 4" (100) SKIP-DASH (WHITE)
- 8 4" (100) SOLID (WHITE)
- 9 12" (300) DIAGONAL (WHITE)
- 10 6" (150) SOLID (WHITE)
- 11 24" (600) STOP BAR (WHITE)
- 12 8" (200) SOLID (WHITE)
- 13 4" (100) LANE LINE EXTENSIONS (WHITE)



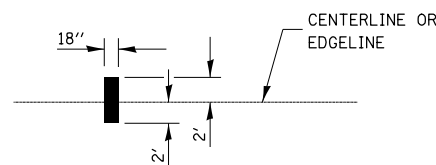
TYPICAL ENTRANCE RAMP TERMINAL



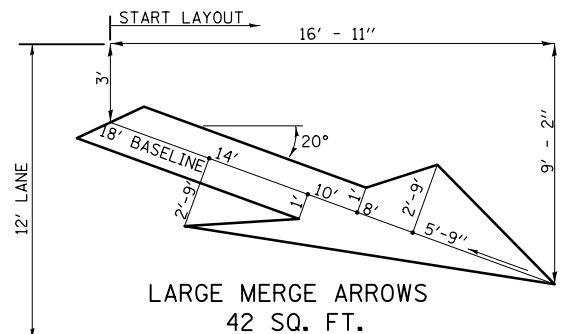
ENTRANCE RAMP TERMINAL with EXCLUSIVE LANE



IT WILL BE NECESSARY TO HAVE A REPRESENTATIVE OF THE STATE POLICE PRESENT SO THAT THE ACCURACY OF MEASUREMENT CAN BE ATTESTED TO IN COURT.



AERIAL SPEED CHECK ZONES



Note: All dimensions are in INCHES (millimeters) unless otherwise shown.

FILE NAME =	USER NAME = plersontr	DESIGNED -	REVISED - 11/06
pw:\IL084EB\INTEG\Illinois.gov\PWIDOT\Documents\DOT Offices\District 5\Projects\D570C96\CADData\CADsheets\D570C96\Drawings\Drawings.dgn		CHECKED -	REVISED -
\$MODELNAME	PLOT SCALE = 40,0000' / 1"	DATE -	REVISED -
	PLOT DATE = 5/16/2017		

**STATE OF ILLINOIS
DEPARTMENT OF TRANSPORTATION**

PAVEMENT MARKING (INTERSTATE & MULTI-LANE APPLICATIONS)

SCALE: SHEET 1 OF 1 SHEETS STA. TO STA.

DISTRICT 5 DETAIL NO. 7800BBBB

F.A.I. RTE.	SECTION	COUNTY	TOTAL SHEETS	SHEET NO.
74	(92-10)PP	VERMILION	8	8
CONTRACT NO. 70C96				
ILLINOIS FED. AID PROJECT				