

STATE OF ILLINOIS
 CITY OF CHICAGO
 DEPARTMENT OF PUBLIC WORKS
 BUREAU OF ENGINEERING

INDEX OF SHEETS

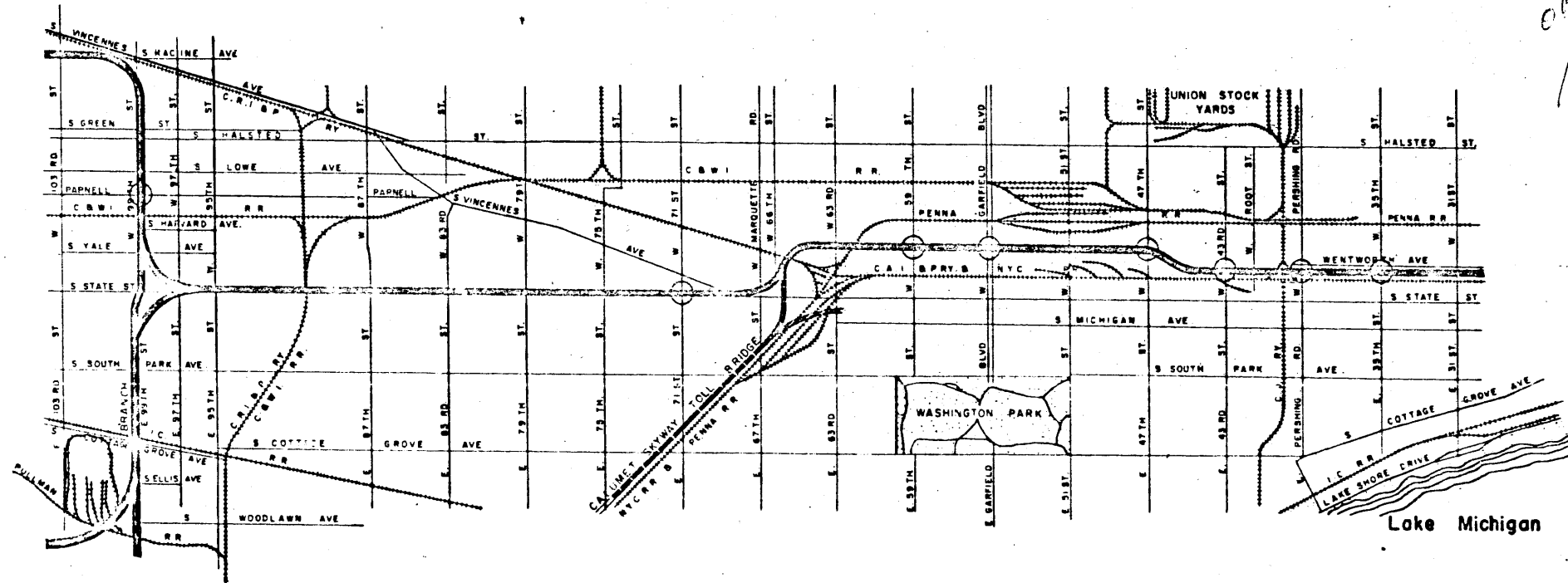
SHEET NO.	TITLE	PAGE NO.
G1	COVER SHEET	1
G2	35TH ST BRIDGE	2
G3	PERSHING RD BRIDGE	3
G4	43RD ST BRIDGE	4
G5	47TH ST BRIDGE	5
G6	55TH ST BRIDGE	6
G7	59TH ST BRIDGE	7
G8	71ST ST BRIDGE	8
G9	PARNELL AV BRIDGE	9
G10	DETAILS	10
G11	DETAILS	11
G12	BILL OF MATERIAL	12

SUMMARY OF QUANTITIES

QUANTITY	UNIT	ITEM
6,216	LIN. FT.	CHAIN LINK FENCE (12')

DAN RYAN EXPRESSWAY
 PLANS FOR
 CHAIN LINK FENCE
 ON OVERPASS BRIDGES

SECTION S-0917 CS
 FA I ROUTE 94 PROJECT UI-94-3(186)54



OK
[Signature]

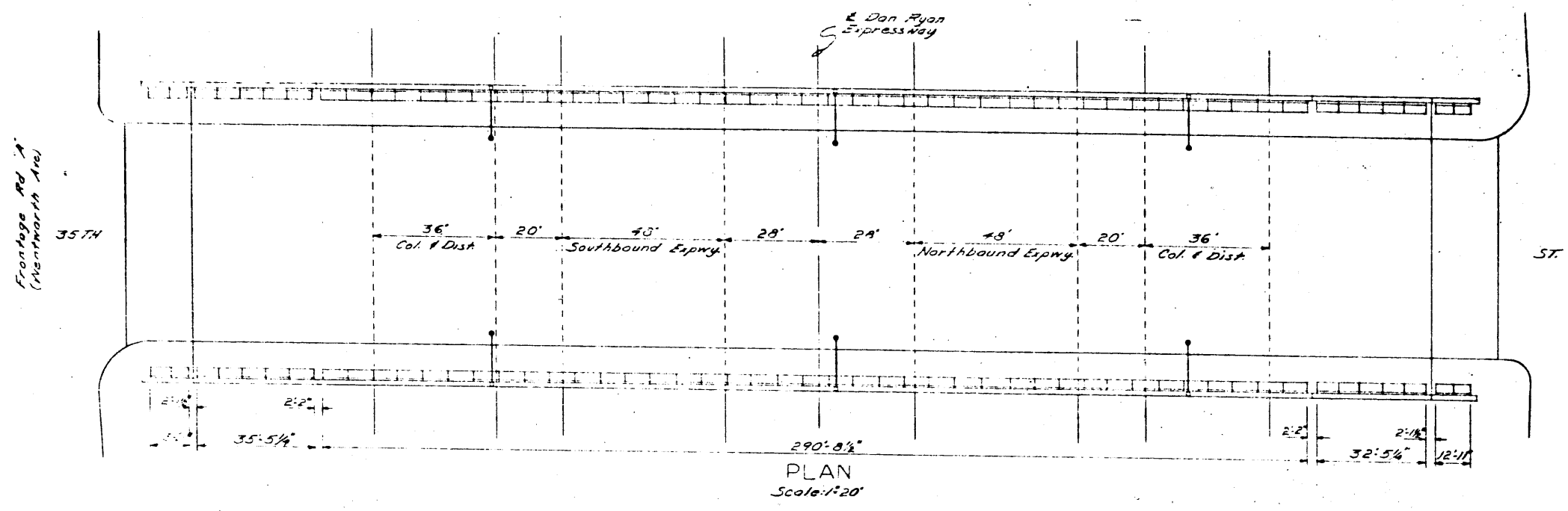


LOCATION MAP
 SCALE 0 2000 4000 FEET

CITY OF CHICAGO
 DEPARTMENT OF PUBLIC WORKS
 BUREAU OF ENGINEERING
 DATE SEPTEMBER 21, 1967
 APPROVED [Signature]
 CHIEF TRANSPORTATION ENGINEER
 APPROVED _____
 ASST. CHIEF ENGINEER
 APPROVED [Signature]
 CHIEF ENGINEER
 APPROVED [Signature]
 COMMISSIONER

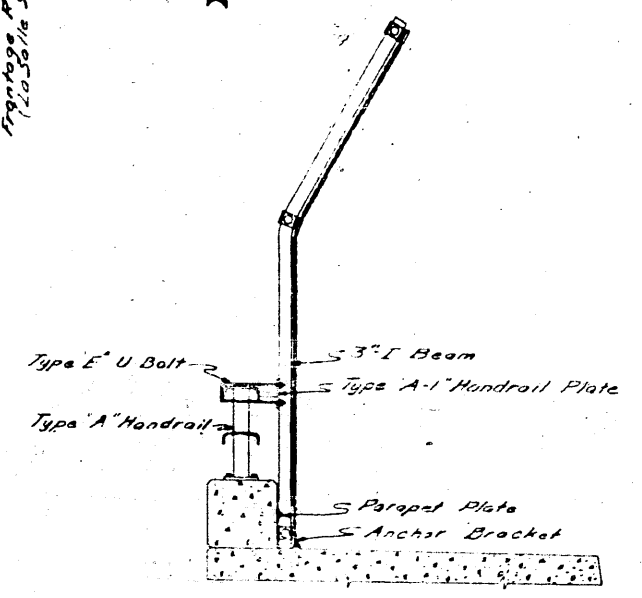
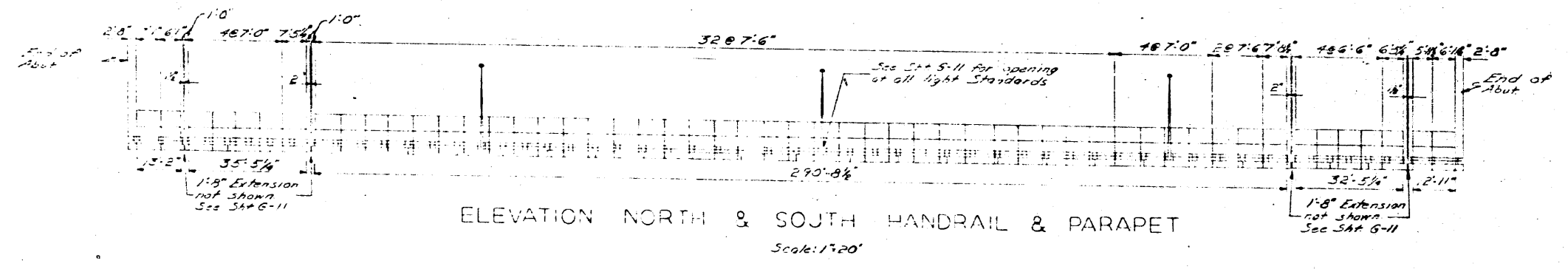
DEPARTMENT OF COMMERCE
 BUREAU OF PUBLIC ROADS
 APPROVED _____
 DIVISION ENGINEER
 DATE _____

THE DEPARTMENT OF
 PUBLIC WORKS AND BUILDINGS
 DIVISION OF HIGHWAYS
 APPROVED _____ 1967
 APPROVED _____ 1967
 DIRECTOR



Frontage Rd. 'B' (To South St.)

Frontage Rd. 'A' (Northward Ave)

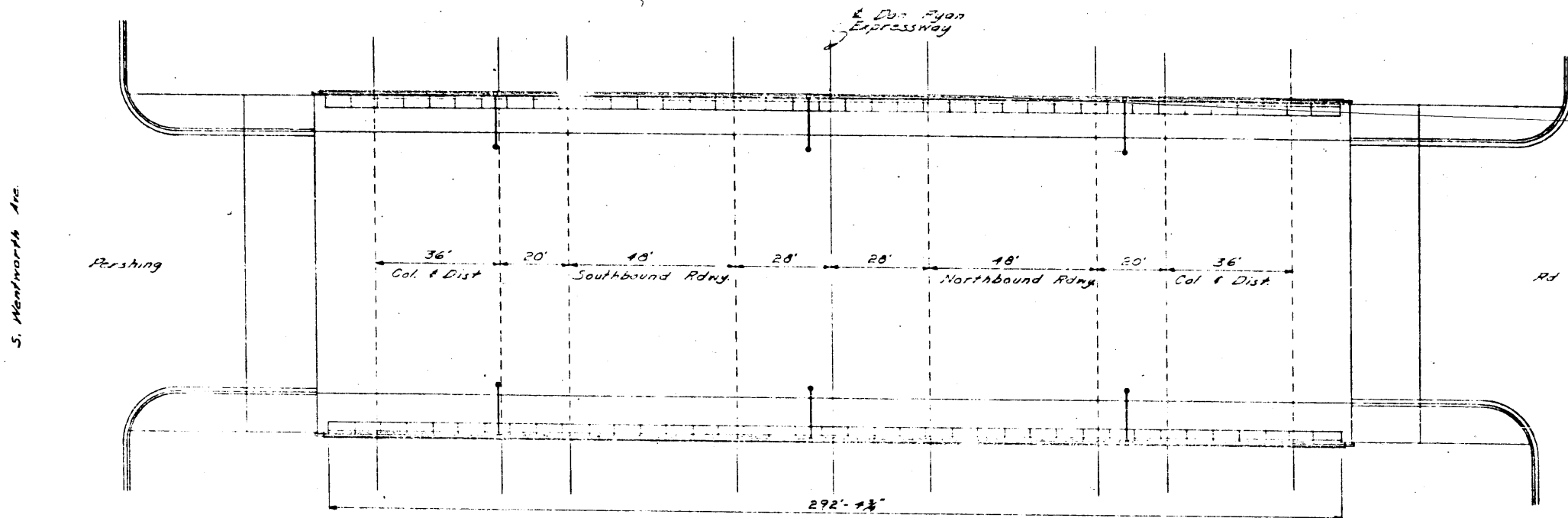


NOTE
 The length and height of Parapet Panels and handrails were obtained from As Built Drawings and are believed to be accurate but can not be guaranteed. Contractor shall make field survey to insure proper location of fence posts and height of handrail plates. Fence posts should not be installed closer than 10" from parapet joint.

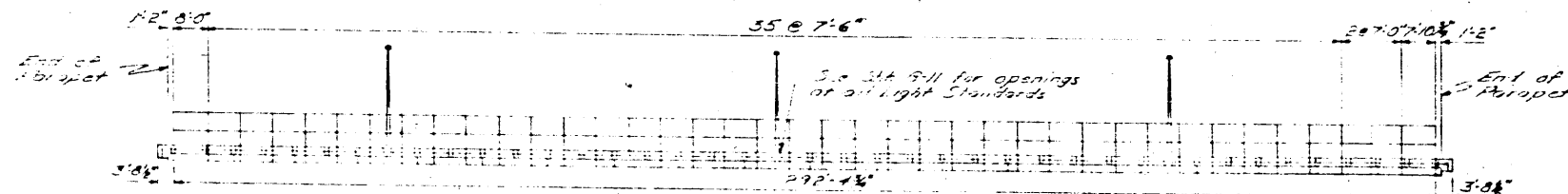
For Details See Shts 6-10, 11

Checked by: _____
 Drawn by: H. Koc...
 H. Koc...
 E. J. Casazza

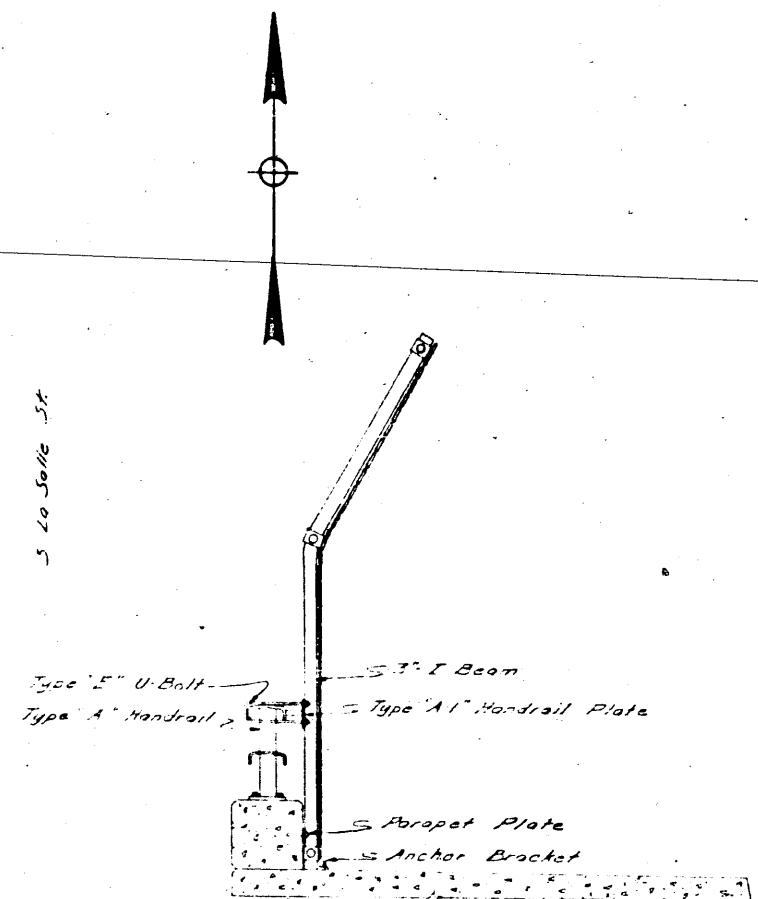
CITY OF CHICAGO
 DEPARTMENT OF PUBLIC WORKS
 BUREAU OF ENGINEERING
 DAN RYAN EXPRESSWAY
 CHAIN LINK FENCE ON OVERPASS BRIDGES
 FROM 35TH ST TO SOUTH PARNELL AVENUE
 SECTION S-0917 CS
 35TH ST BRIDGE
 SCALE: AS NOTED SEPTEMBER 1967
 SHEET NO. G-2 OF 12 SHEETS



PLAN
Scale: 1"=20'



ELEVATION NORTH & SOUTH HANDRAIL & PARAPET
Scale: 1"=20'



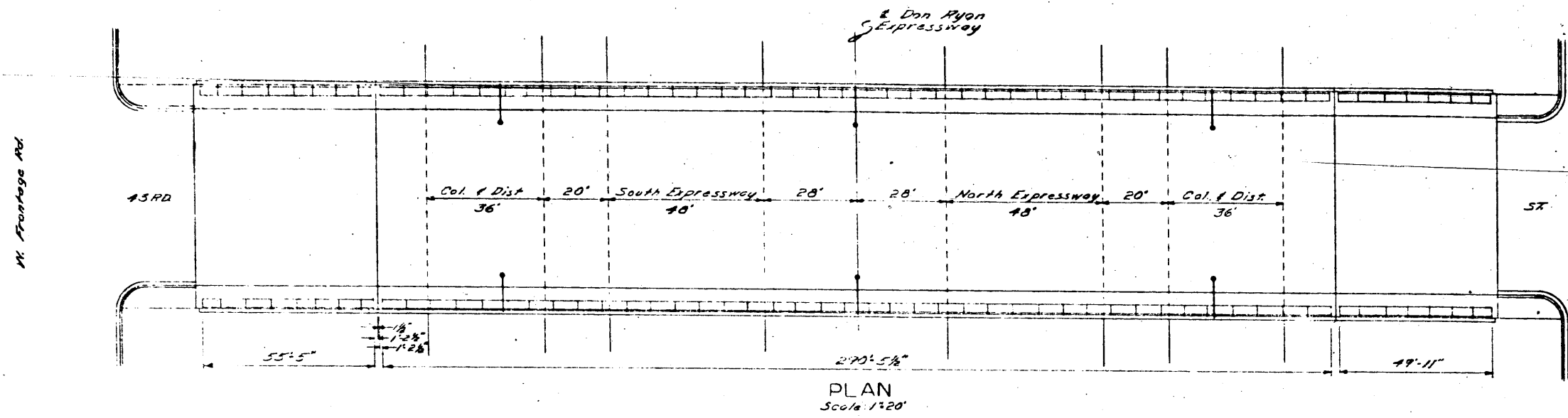
TYICAL SECTION
Scale: 1/2"=1'-0"

NOTE:
The length and height of Parapet Beams and Handrails were determined from As Built Drawings and are believed to be accurate but can not be guaranteed. Contractor should make a field check to insure proper location of fence posts and height of Handrail Plates. Fence Posts should not be installed closer than 10' from Parapet Joint.
For Details See SHS 5-0.11

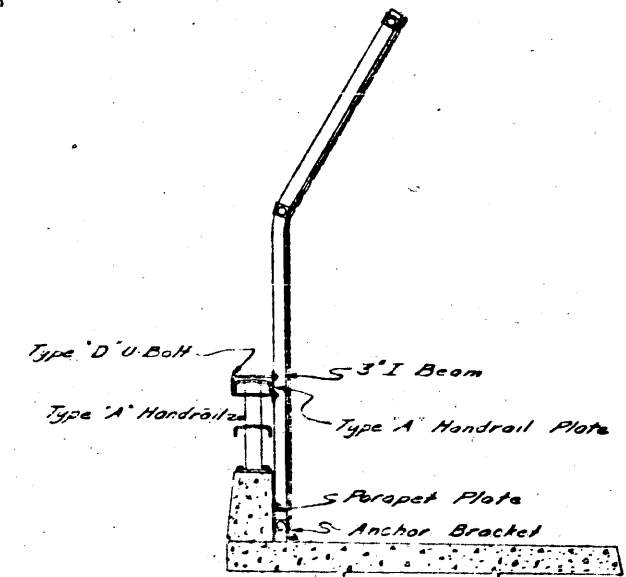
In Charge: [Signature]
Designed By: [Signature]
Checked By: [Signature]
Reviewed By: E. A. Corozza

CITY OF CHICAGO
DEPARTMENT OF PUBLIC WORKS
BUREAU OF ENGINEERING
DAN RYAN EXPRESSWAY
CHAIN LINK FENCE ON OVERPASS BRIDGES
FROM 35TH ST. TO SOUTH PARNELL AVENUE
SECTION S-0917 CS
W. PERSHING ROAD BRIDGE
SCALE: AS NOTED
SEPTEMBER 1987
SHEET NO. G-3 OF 12 SHEETS

ROUTE NO.	SECTION	COUNTY	TOTAL SHEETS	SHEET NO.
1 A 1 94 S-0917CS		COOK	12	4
FED. ROAD DIST. NO.	ILLINOIS	PROJECT	UI-94-3 (0054)	



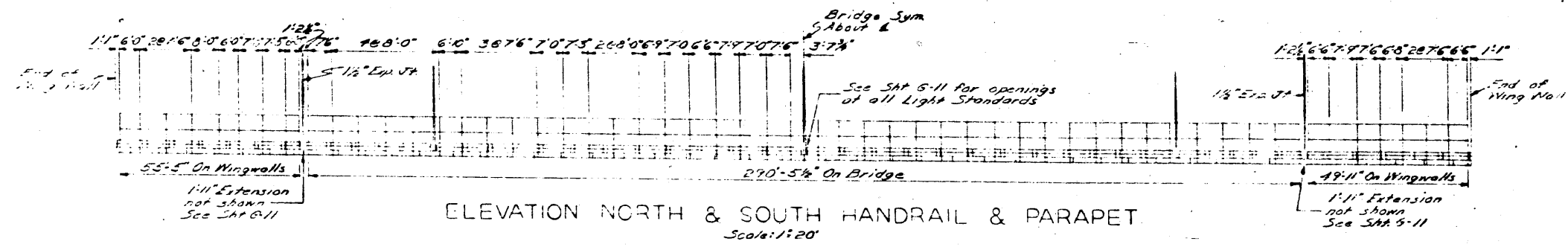
E. Franchise Rd.



NOTE:
The length and height of Parapet Panels and Handrails were obtained from As Built Drawings and are believed to be accurate but can not be guaranteed. Contractor should make field survey to insure proper location of Parapet Panels and height of Handrail Plates. Parapet Plates should not be installed closer than 12" from Parapet Joint.

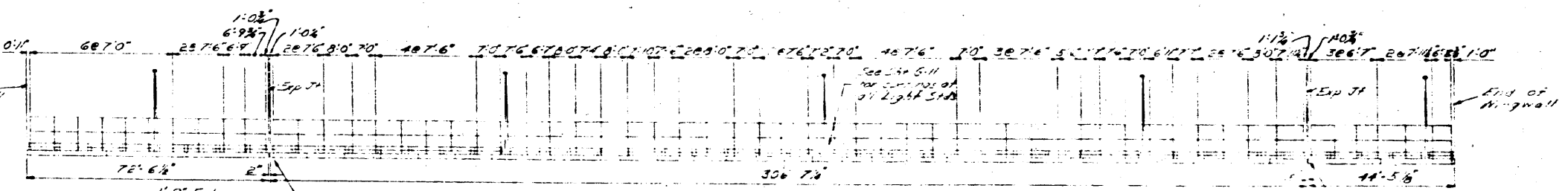
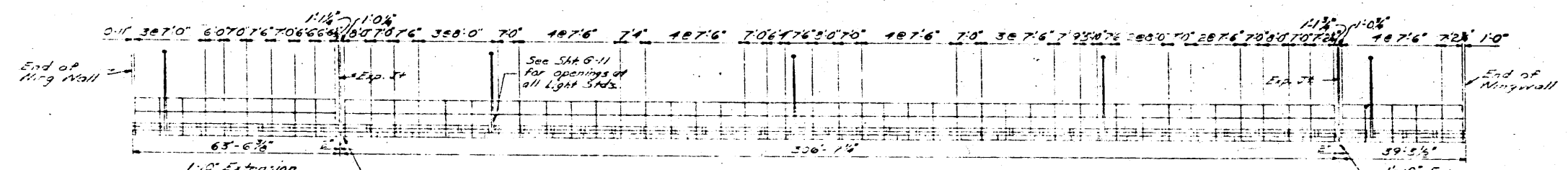
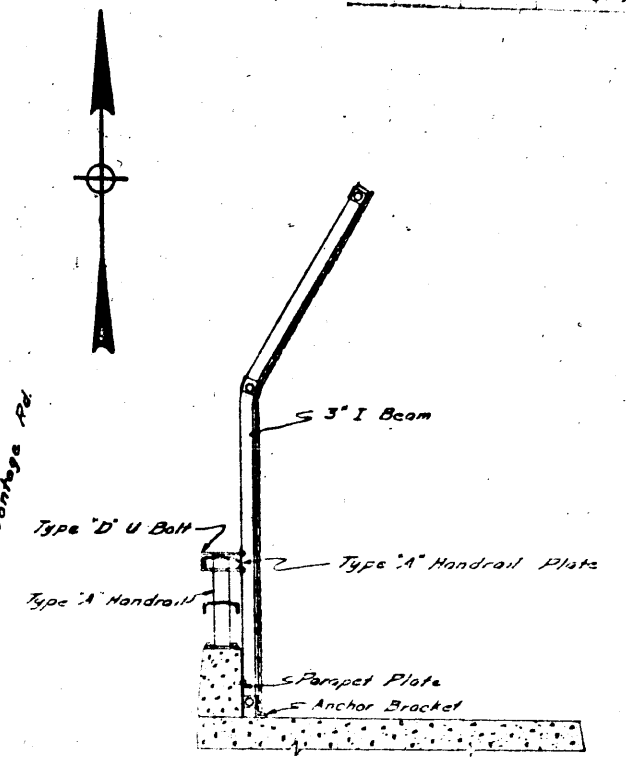
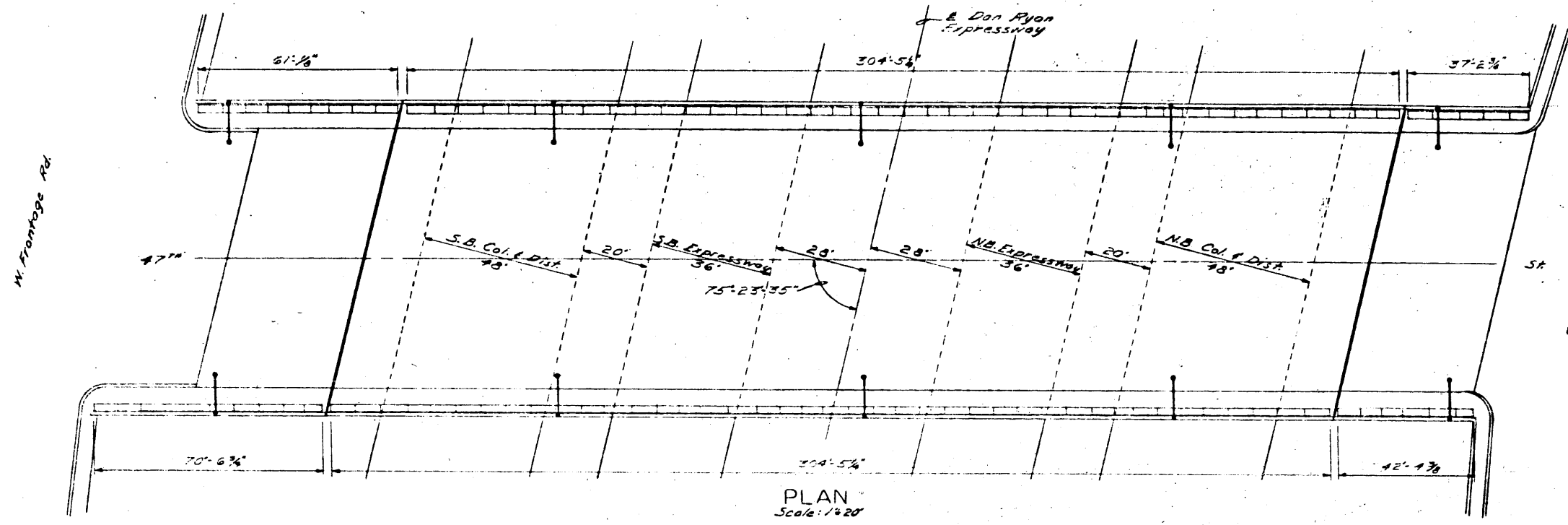
For Details See SHTS. 6-10, 11

Sheet Plans showing notes not to be used as a guide for standard locations



In Charge: W. J. [Signature]
 Designed By: H. [Signature]
 Drawn By: H. [Signature]
 Checked By: [Signature]
 Date: 8/16/87

CITY OF CHICAGO
 DEPARTMENT OF PUBLIC WORKS
 BUREAU OF ENGINEERING
 DAN RYAN EXPRESSWAY
 CHAIN LINK FENCE ON OVERPASS BRIDGES
 FROM 35TH ST TO SOUTH PARNELL AVENUE
 SECTION S-0917CS
43 RD ST. BRIDGE
 SCALE AS NOTED SEPTEMBER 1987
 SHEET NO. G-4 OF 12 SHEETS



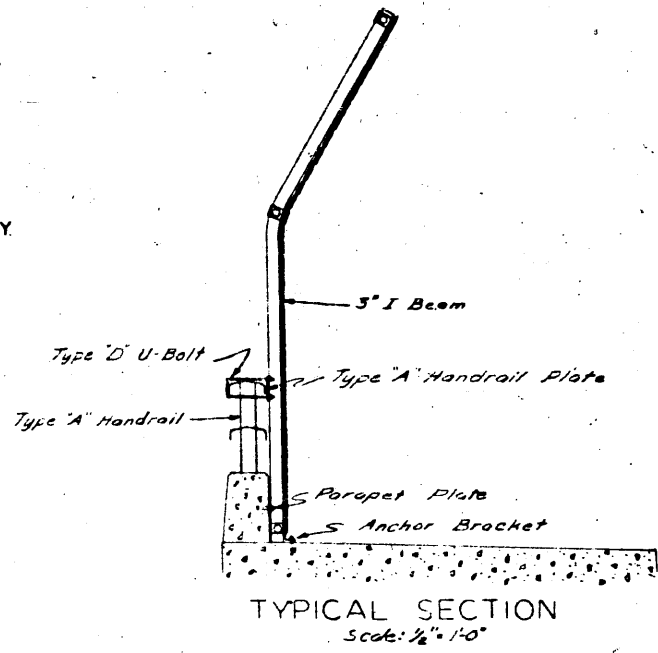
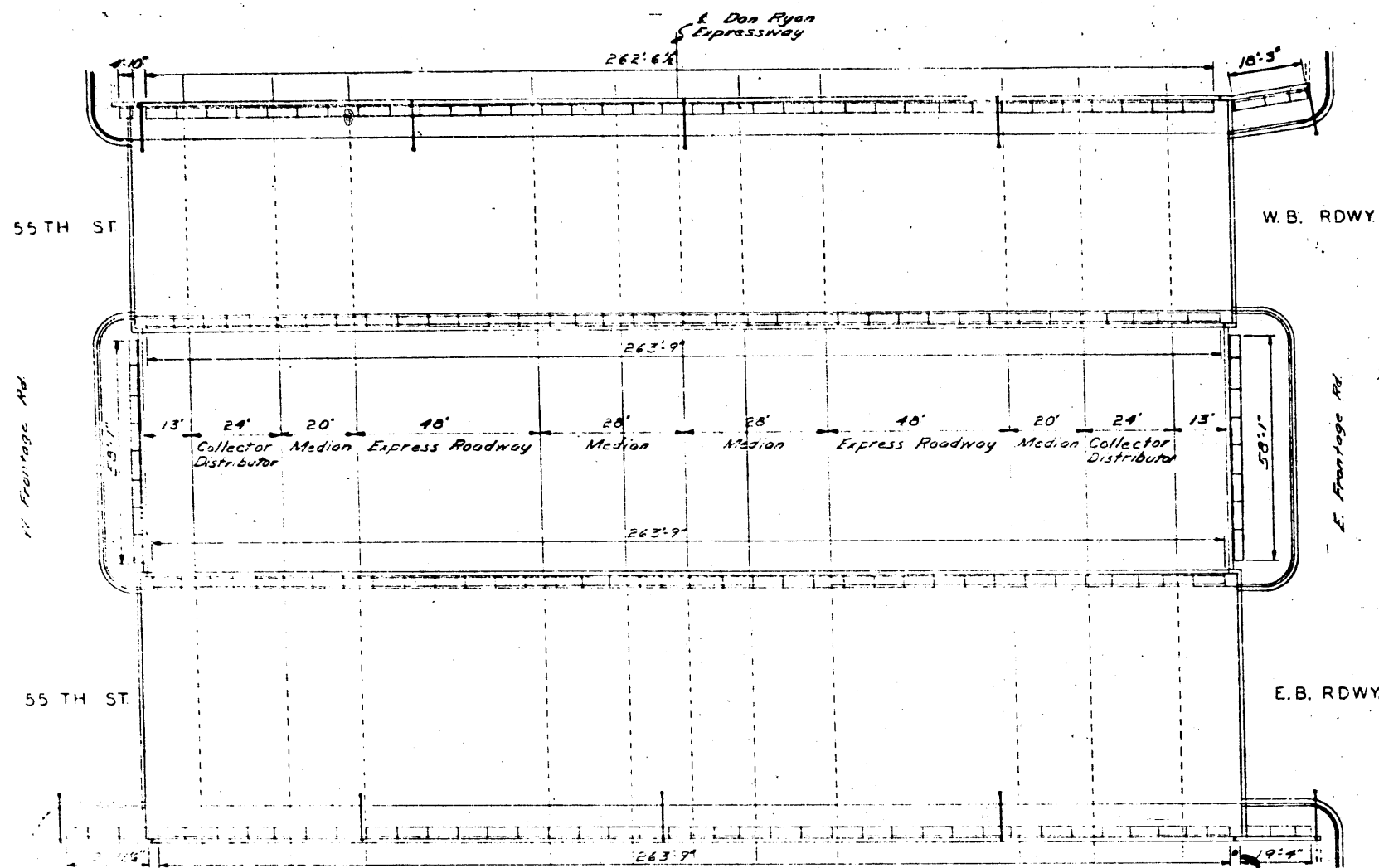
For Details See Shts 6-10,11

NOTE:
 The length and height of Parapet Plates and Handrails were obtained from As Built Drawings and are believed to be accurate. We can not be guaranteed Contractor will make a field survey to insure proper location of fence posts and height of parapet plates. Fence posts should not be installed closer than 10" from parapet edge.

Lower Grade Paving used not be installed at light standard locations.

IN CHARGE: S. G. Kelly
 DESIGNER: H. Hill
 CHECKED BY: D. Hill
 DATE: 9/1/67
 DRAWN BY: H. Hill

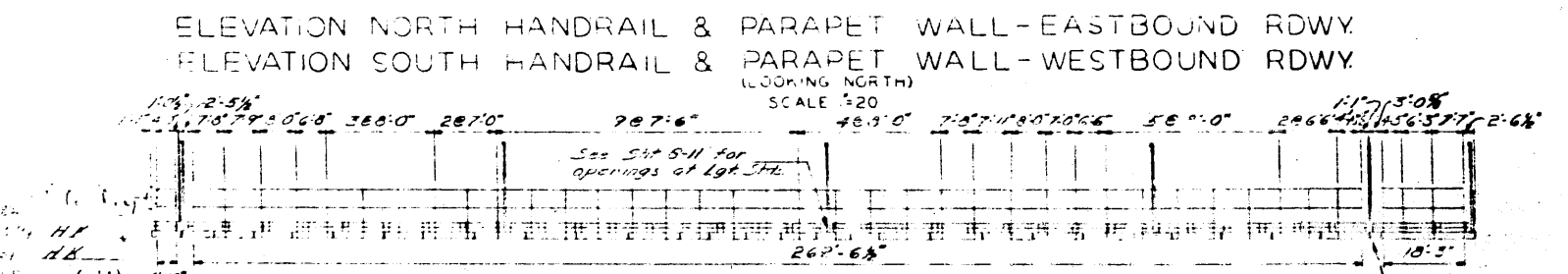
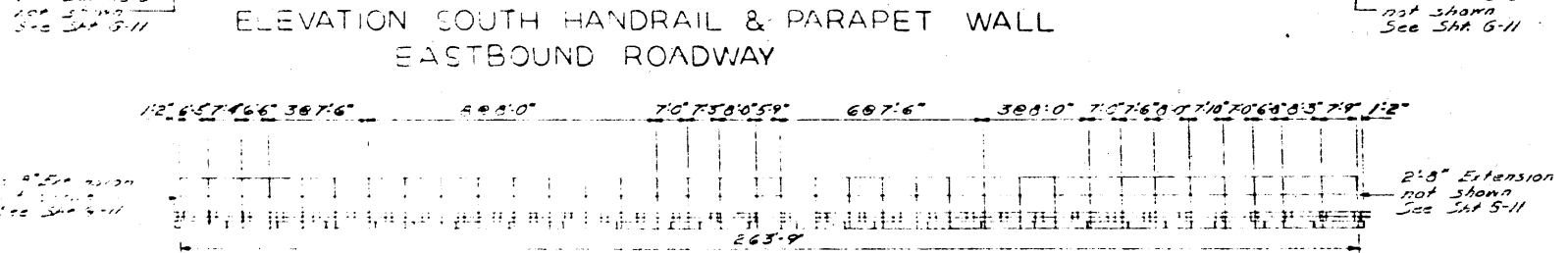
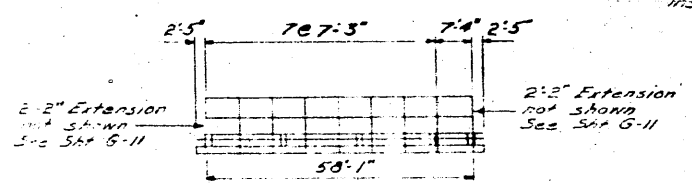
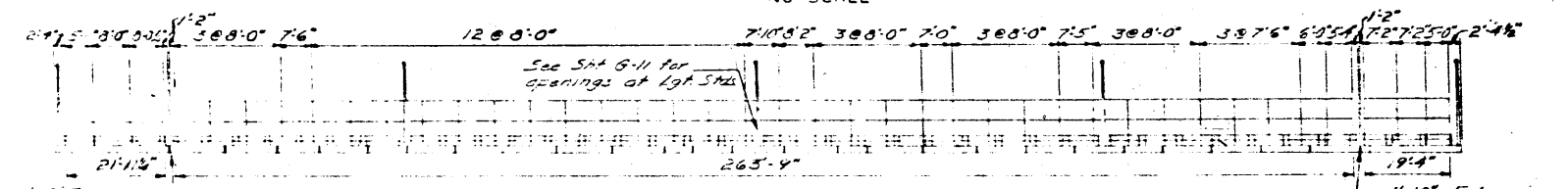
CITY OF CHICAGO
 DEPARTMENT OF PUBLIC WORKS
 BUREAU OF ENGINEERING
 DAN RYAN EXPRESSWAY
 CHAIN LINK FENCE ON OVERPASS BRIDGES
 FROM 35TH ST TO SOUTH PARNELL AVENUE
 SECTION S-0917CS
 47TH ST BRIDGE
 SCALE AS NOTED SEPTEMBER 1967
 SHEET NO. 5 OF 12 SHEETS



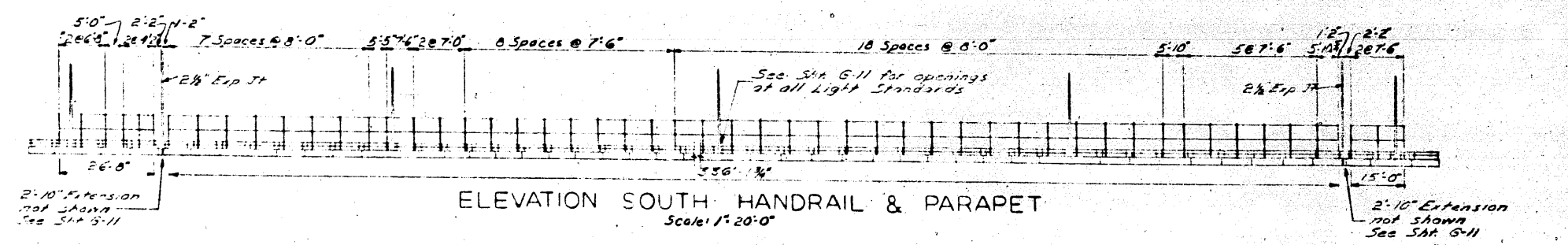
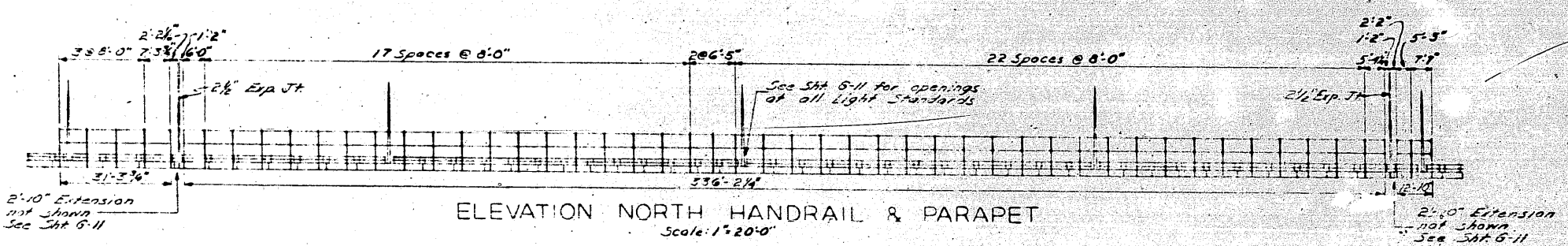
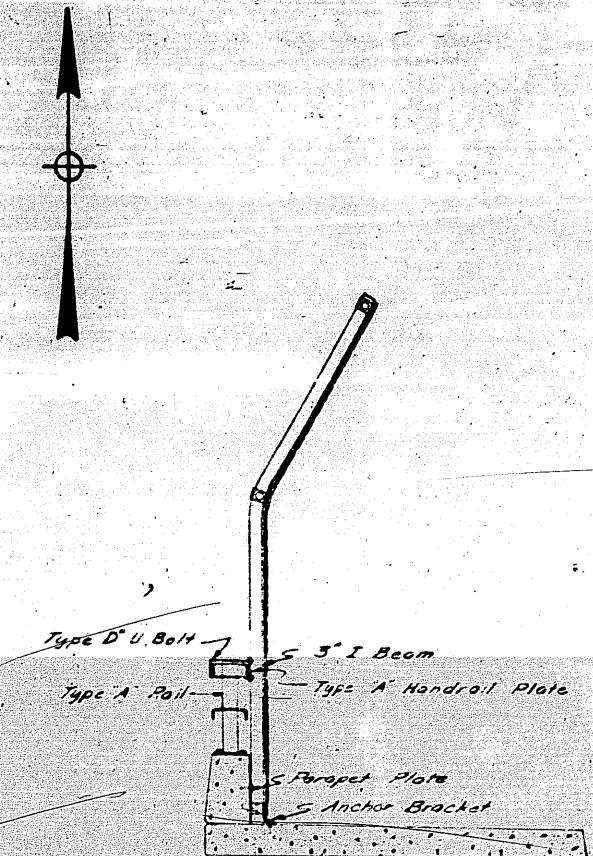
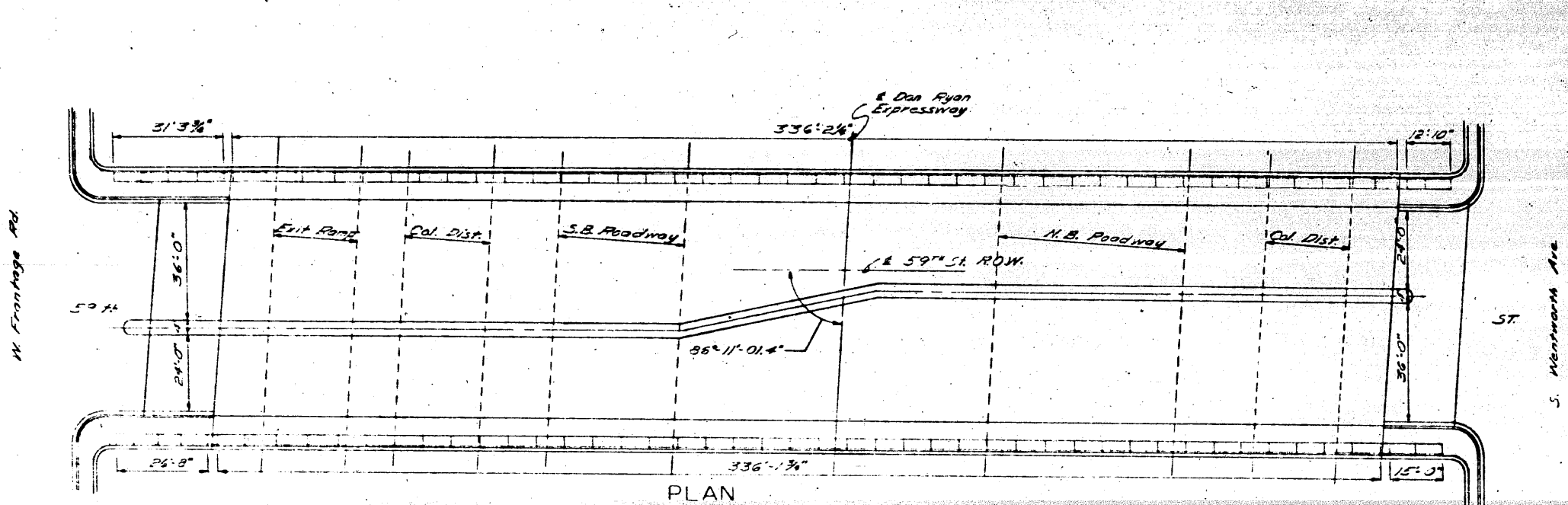
For Details See Shts. 6-10, 11

NOTE
The length and height of Parapet Panels and Handrails were obtained from As-Built Drawings and are believed to be accurate but can not be guaranteed. Contractor should make a field survey to insure proper location of Fence Posts and height of Handrail Plates. Fence Posts should not be installed closer than 10" from Parapet Joint.

Lower Fence Railing need not be installed at right standard locations.



CITY OF CHICAGO
DEPARTMENT OF PUBLIC WORKS
BUREAU OF ENGINEERING
DAN RYAN EXPRESSWAY
CHAIN LINK FENCE ON OVERPASS BRIDGES
FROM 35TH ST. TO SOUTH PARNELL AVENUE
SECTION S-0917CS
55TH ST. BRIDGE
SCALE AS NOTED
SEPTEMBER 1967
SHEET NO G-6 OF 12 SHEETS



For Details See Shts. 6-10, 11

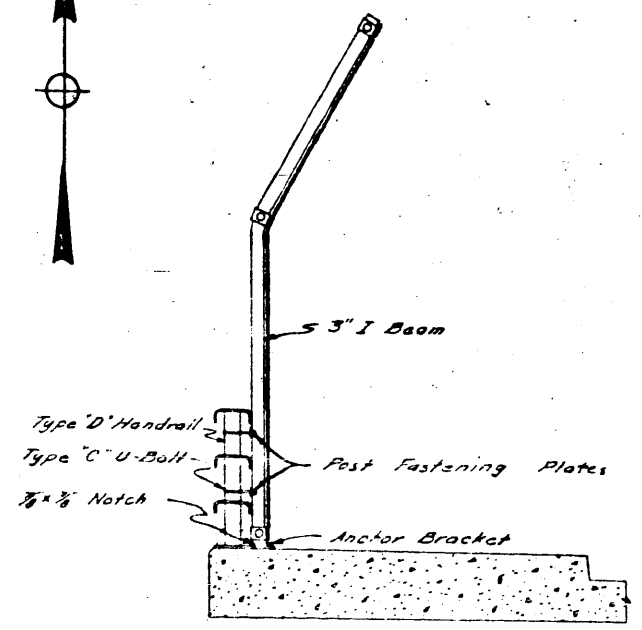
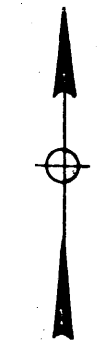
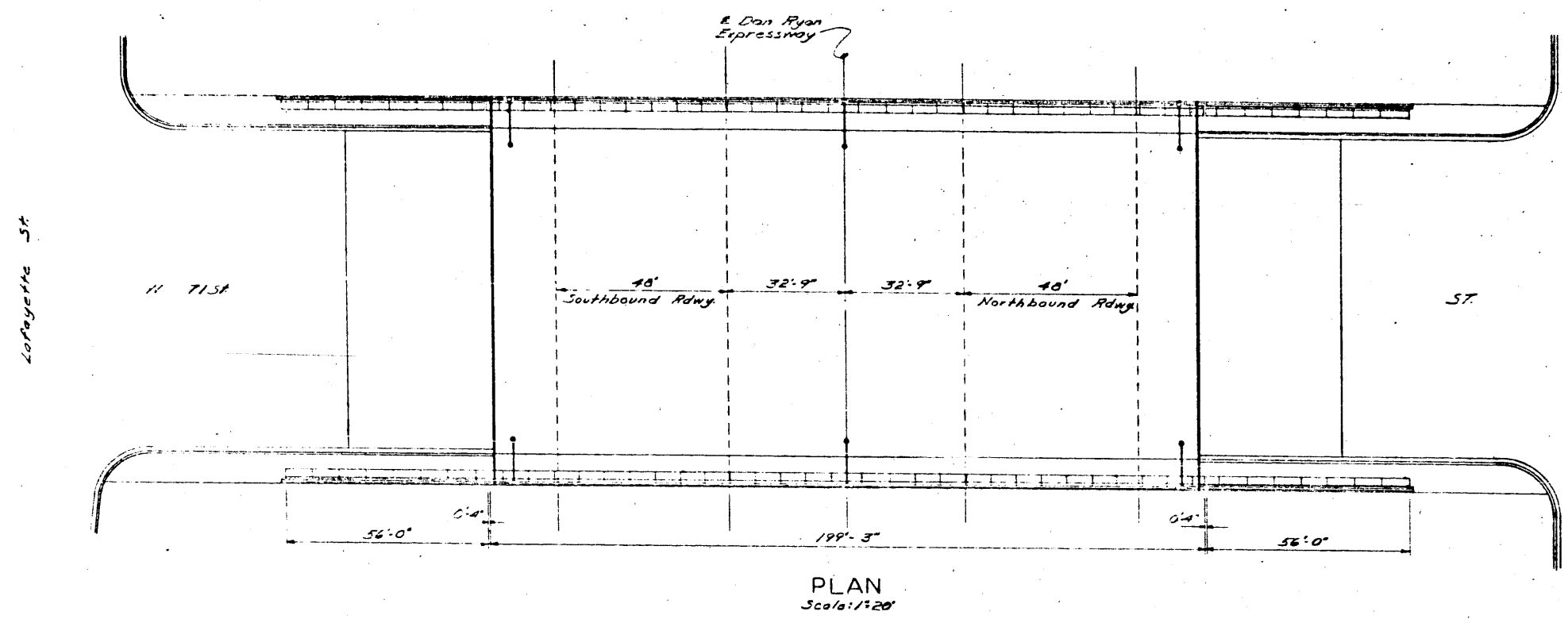
NOTES
The length and height of Parapet Panels and Handrails were obtained from As Built Drawings and are believed to be accurate but can not be guaranteed. Contractor should make a field survey to insure proper location of Fence Posts and height of Handrail Plates. Fence Posts should not be installed closer than 10" from Parapet Joint.

Lower Fence Railing need not be installed at Light Standard locations

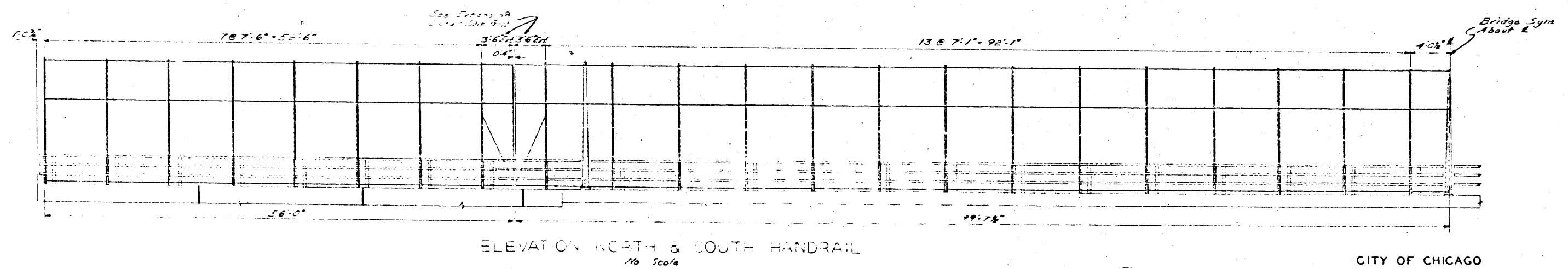
Designed By H. Kell
Checked By H. Kell
Approved By F. A. Carozza

CITY OF CHICAGO
DEPARTMENT OF PUBLIC WORKS
BUREAU OF ENGINEERING
DAN RYAN EXPRESSWAY
CHAIN LINK FENCE ON OVERPASS BRIDGES
FROM 35TH ST TO SOUTH PARNELL AVENUE
SECTION 5-0917CS
59TH ST BRIDGE
SCALE: AS NOTED
SEPTEMBER 1967
SHEET NO. 6-7 OF 12 SHEETS

ROUTE NO.	SECTION	COUNTY	SHEET	SHEET
194 S-0917CS	CHICAGO	ILLINOIS	12	8
PROJECT	11-94-3(186)54			

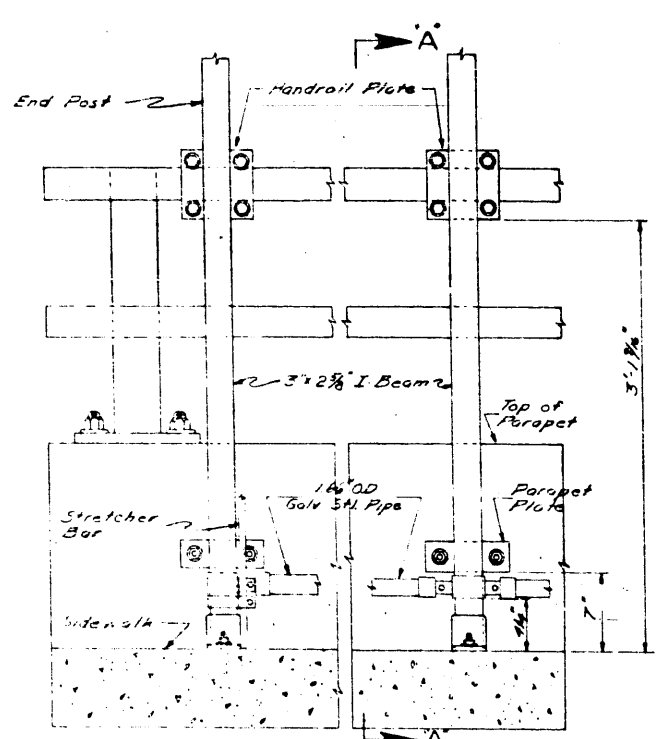


For Details See SHTS. 5-10, 11

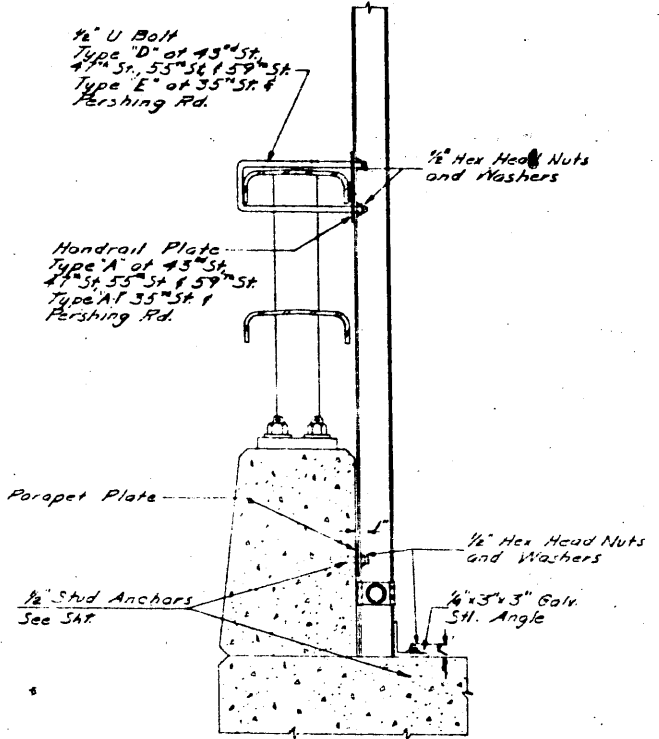


In Charge: W. J. [unclear]
 Design: H. Hall
 Drawn: H. Hall
 Checked: [unclear]
 Approved: E. A. Carozza

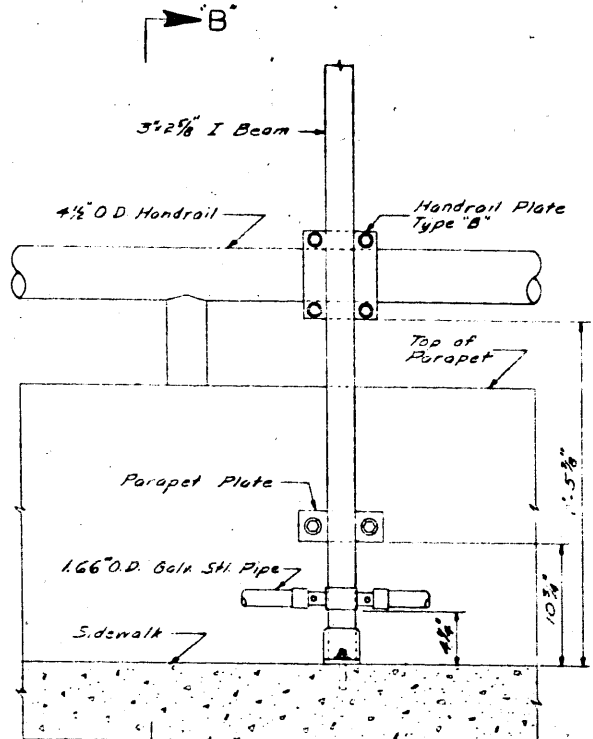
CITY OF CHICAGO
 DEPARTMENT OF PUBLIC WORKS
 BUREAU OF ENGINEERING
 DAN RYAN EXPRESSWAY
 CHAIN LINK FENCE ON OVERPASS BRIDGES
 FROM 35TH ST. TO SOUTH PARNELL AVENUE
 SECTION S-0917CS
 71ST. ST. BRIDGE
 SCALE AS NOTED
 SHEET NO. 8 OF 12 SHEETS
 SEPTEMBER 1967



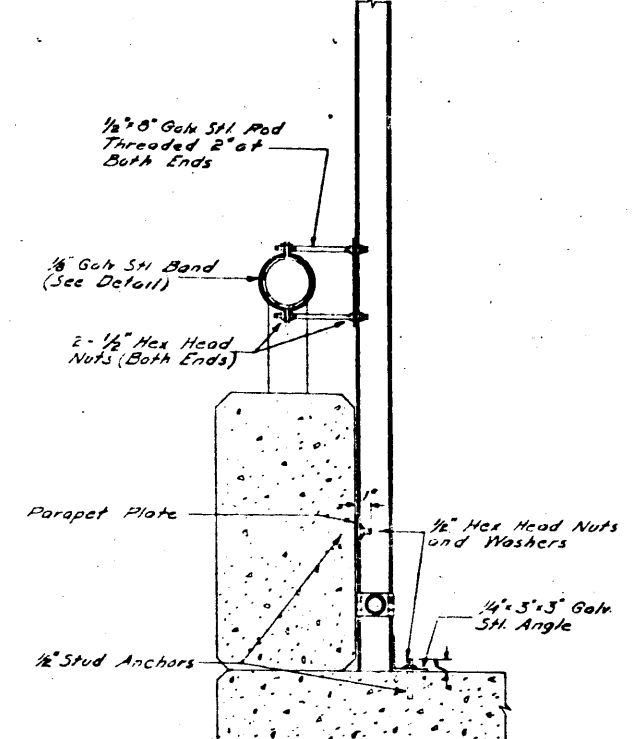
PARAPET SECTION WITH TYPE "A" HANDRAIL
Scale: 1/2"=1'-0"



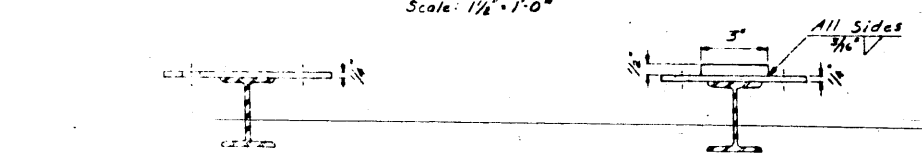
SECTION "A-A"
Scale: 1/2"=1'-0"



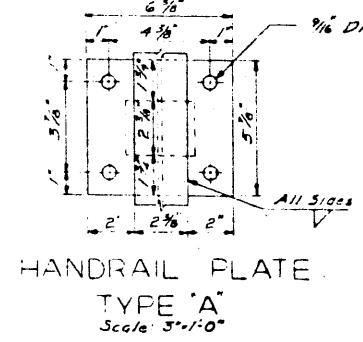
PARAPET SECTION WITH TYPE "B" HANDRAIL
Scale: 1/2"=1'-0"



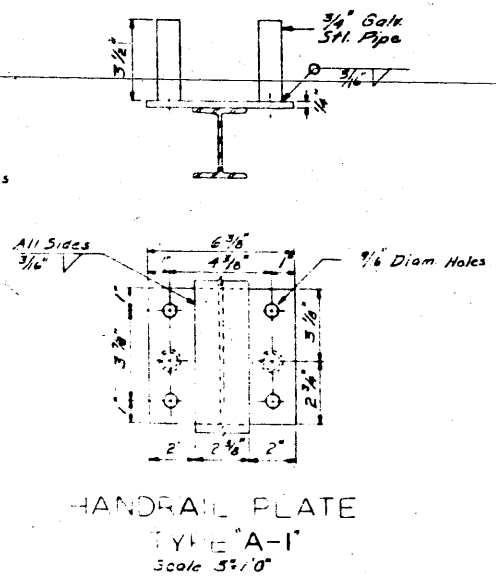
SECTION "B-B"
Scale: 1/2"=1'-0"



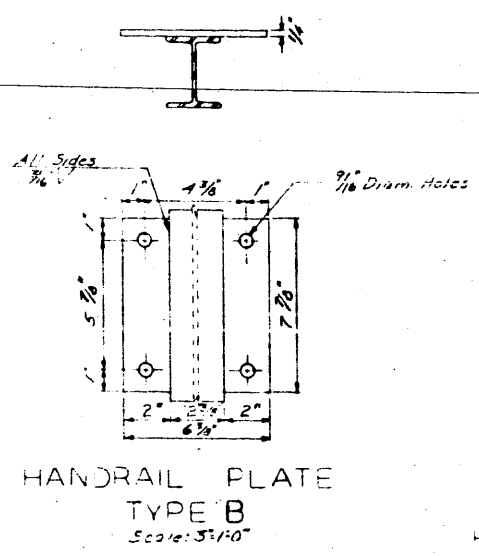
PARAPET PLATE
Scale: 3/4"=1'-0"



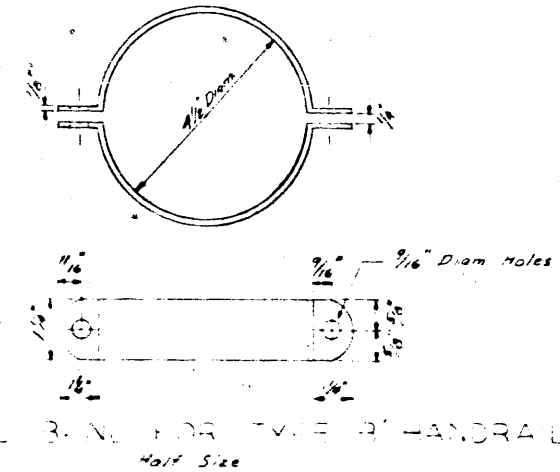
HANDRAIL PLATE TYPE "A"
Scale: 3/4"=1'-0"



HANDRAIL PLATE TYPE "A-1"
Scale: 3/4"=1'-0"



HANDRAIL PLATE TYPE "B"
Scale: 3/4"=1'-0"



HANDRAIL PLATE FOR TYPE "B" HANDRAIL
Half Size

H. K. K...
 H. K. K...
 E. C. Corry

CITY OF CHICAGO
 DEPARTMENT OF PUBLIC WORKS
 BUREAU OF ENGINEERING
 DAN RYAN EXPRESSWAY
 CHAIN LINK FENCE ON OVERPASS BRIDGES
 FROM 35TH ST TO SOUTH PARNELL AVENUE
 SECTION S-0917 CS
 DETAILS
 SCALE AS NOTED SEPTEMBER 1937
 SEE VOLUME OF 2 SHEETS

ITEM	NAME	DESCRIPTION									TOTAL
			35TH ST. BRIDGE	PERSHING RD. BRIDGE	43RD ST. BRIDGE	47TH ST. BRIDGE	GARFIELD BLVD (55TH ST.) BRIDGE	59TH ST. BRIDGE	71ST ST. BRIDGE	PARNELL AVE. BRIDGE	
1	CHAIN LINK FABRIC	#9 GA. WIRE-2" MESH, 12'	753	595	500	540	1,244	710	623	571	6,216
2	FENCE POST	3" I-BEAM, 5.7" x 12'-0"	116	80	114	118	175	106		98	807
3	FENCE POST-NOTCHED	3" I-BEAM, 5.7" x 12'-0"							88		88
4	RAIL	1.66" O.D. (2.27")	2,460	1,755	2,400	2,494	2,825	3,081	1,765	1,713	13,802
5	RAIL CAPS	FOR 1.66" O.D. RAIL	636	463	536	253	919	590	493	576	5,018
6	2-WAY BAND	1/8" x 2" FL.	255	229	274	275	453	226	229	252	2,337
7	END BAND	1/8" x 2" FL.	60	12	45	56	72	52	34	12	348
8	STRETCHER BAR	1/4" x 3/4" FL.	56	4	20	20	32	20	28	4	164
9	STRETCHER BAR BAND	1/8" x 1" FL. (FOR I-BEAM)	373	44	176	176	253	176	220	44	1,597
10	STRETCHER BAR BAND	1/8" x 1" FL. (FOR 1.66" O.D. RAIL)	53		44	44	99	44	53		407
11	FABRIC TIE	#9 GA. GALV. WIRE				As Required					
12	FABRIC CLIP	#6 GA. GALV. WIRE				As Required					
13	CARRIAGE BOLT & NUT	3/8" x 1-1/8", 16NC				As Required					
14	PARAPET PLATE	2-1/2" x 7-3/8" x 1/4"	116	50	114	118	175	106		98	807
15	HANDRAIL PLATE - TYPE "A"	5-7/8" x 6-3/8" x 1/4"			114	118	175	106			513
16	HANDRAIL PLATE - TYPE "A-1"	5-7/8" x 6-3/8" x 1/4"	116	50							96
17	HANDRAIL PLATE - TYPE "B"	4-3/8" x 7-7/8" x 1/4"							98	98	
18	HANDRAIL BAND	1-1/4" x 1/8" (FOR 4-1/2" O.D. RAIL)							196	196	
19	POST FASTENING PLATE - TYPE "B"	2" x 6-5/8" x 1/4"							176	176	
20	U-BOLT - TYPE "C"	1/2"-13NC (SEE SHEET G-11)							176	176	
21	U-BOLT - TYPE "D"	1/2"-13NC (SEE SHEET G-11)			216	256	350	212			1,026
22	U-BOLT - TYPE "E"	1/2"-13NC (SEE SHEET G-11)	232	160							392
23	1/2" ROD	1/2" x 8" (13NC - 2" BOTH ENDS)								392	392
24	ANCHOR BRACKET	L 3" x 3" x 1/4" x 0"-3"	16	90	4	116	175	106	89	93	895
25	TENSION WIRE	SEE EXTENSION DETAIL SHT. G-11	5		4	4	9	4	5		37
26	ELBOW	FOR 1.66" O.D. RAIL	16		8	8	18	9	16		74
27	TEE	FOR 1.66" O.D. RAIL	5		4	4	9	4	8		37
28	NUT	1/2"-13NC HEX HEAD, HEAVY JAM				As Required					
29	WASHER	1-3/8" x 7/64" (FOR 1/2" BOLT)				As Required					
30	STUD ANCHOR	SEE SHT. G-11	343	240	318	354	521	315	35	174	2,509

In Charge F. Wilky to
 Designed By _____
 Drawn By _____
 Checked By _____
 Approved By F. G. G. 12/26

CITY OF CHICAGO
 DEPARTMENT OF PUBLIC WORKS
 BUREAU OF ENGINEERING
 DAN RYAN EXPRESSWAY
 CHAIN LINK FENCE ON OVERPASS BRIDGES
 FROM 35TH ST TO SOUTH PARNELL AVENUE
 BILL OF MATERIAL
 SCALE: NONE SEPTEMBER 1967
 SHEET NO. G-12 OF 12 SHEETS