



STATION (START)	STATION (FINISH)	O/S	PORTLAND CEMENT CONCRETE SIDEWALK 4 INCH	PORTLAND CEMENT CONCRETE SIDEWALK 6 INCH
			SQ FT	SQ FT
100+36.24	103+76.15	14.78 LT to 18.20 LT	1793	
103+76.24	103+90.70	18.19 LT to 18.10 LT		79
103+90.70	104+48.25	18.10 LT to 18.46 LT	360	
104+48.25	104+72.51	18.46 LT to 18.53 LT		125
104+72.51	105+28.93	18.53 LT to 18.67 LT	351	
105+28.93	105+47.64	18.67 LT to 18.75 LT		109
105+47.64	105+64.14	18.75 LT to 18.64 LT	109	
105+64.14	105+77.20	18.64 LT to 18.61 LT		63
105+77.20	106+80.82	24.63 LT to 17.91 LT	636	
106+80.82	106+99.60	17.91 LT to 18.47 LT		113
106+99.60	107+13.65	17.90 LT to 18.63 LT	92	
107+13.65	107+35.69	18.63 LT to 19.01 LT		117
107+35.69	107+74.52	19.01 LT to 18.95 LT	239	
107+74.52	107+92.86	18.95 LT to 18.62 LT		117
107+92.86	200+84.92	18.62 LT to 14.09 LT	1110	
200+84.92	201+10.90	14.09 LT to 14.14 LT		148
201+10.90	201+18.21	14.14 LT to 14.28 LT	48	
201+18.21	201+38.23	14.28 LT to 14.24 LT		120
201+38.23	202+09.67	14.24 LT to 27.25 LT	505	
202+09.67	202+30.83	19.80 LT to 14.15 LT	289	
202+30.83	202+78.79	14.15 LT to 14.22 LT		122
202+78.79	203+01.39	14.22 LT to 14.27 LT	783	
203+01.39	204+30.15	14.27 LT to 14.25 LT		99
204+30.15	204+48.08	14.25 LT to 14.10 LT	337	
204+48.08	205+02.27	14.10 LT to 14.08 LT		114
205+02.27	205+23.88	14.08 LT to 14.11 LT	63	
205+23.88	205+30.12	14.11 LT to 14.06 LT		112
205+30.12	205+53.78	14.06 LT to 14.16 LT	309	
205+53.78	206+01.00	14.16 LT to 14.14 LT		125
206+01.00	206+25.91	14.14 LT to 14.09 LT	544	
206+25.91	207+12.56	14.09 LT to 14.08 LT		87
207+12.56	207+31.10	14.08 LT to 14.00 LT	361	
207+31.10	207+88.29	14.00 LT to 14.05 LT		111
207+88.29	208+08.23	14.05 LT to 13.94 LT	53	
208+08.23	208+18.11	13.94 LT to 14.04 LT		99
208+18.11	208+42.87	14.04 LT to 13.95 LT	526	
208+42.87	209+32.06	13.95 LT to 14.17 LT		107
209+32.06	209+49.87	14.17 LT to 14.18 LT	375	
209+49.87	210+12.49	14.18 LT to 14.17 LT		112
210+12.49	210+31.34	14.17 LT to 13.99 LT	207	
210+31.34	210+64.08	13.99 LT to 13.84 LT		100
210+64.08	211+70.20	13.99 LT to 20.40 LT	514	
211+70.20	300+21.64	25.08 RT to 15.85 RT	237	
300+21.64	300+59.10	15.85 RT to 16.58 RT		122
300+59.10	301+26.01	16.58 RT to 16.86 RT	305	
301+26.01	301+37.43	16.86 RT to 16.93 RT		73
301+37.43	301+90.15	16.93 RT to 16.78 RT	353	
301+90.15	302+04.52	16.78 RT to 16.81 RT		87
302+04.52	302+56.85	16.81 RT to 16.22 RT	339	
302+56.85	302+81.45	16.22 RT to 16.39 RT		130
302+81.45	304+14.00	16.39 RT to 15.74 RT	745	
304+14.00	304+38.88	15.74 RT to 16.16 RT		131
304+38.88	304+83.48	16.16 RT to 15.74 RT	262	
304+83.48	304+99.11	15.74 RT to 15.36 RT		73
304+99.11	306+64.29	15.36 RT to 19.37 RT	1007	
306+64.29	307+73.42	19.29 LT to 15.83 LT	472	
307+73.42	307+95.70	15.83 LT to 15.95 LT		114
307+95.70	308+59.04	15.95 LT to 15.87 LT	402	
308+59.04	308+81.26	15.87 LT to 15.83 LT		121
308+81.26	309+36.25	15.83 LT to 16.18 LT	336	
309+36.25	309+56.05	16.18 LT to 16.04 LT		106
309+56.05	310+18.02	16.04 LT to 15.94 LT	384	
310+18.02	310+38.10	15.94 LT to 15.92 LT		106
310+38.10	310+99.86	15.92 LT to 15.84 LT	378	
310+99.86	311+16.49	15.84 LT to 15.79 LT		101
311+16.49	311+79.27	17.06 LT to 16.05 LT	340	
311+79.27	311+96.36	16.20 LT to 16.13 LT		103
311+96.36	312+21.95	16.13 LT to 16.13 LT	154	
312+21.95	312+31.48	16.13 LT to 16.22 LT	57	
TOTAL			15318	3503

STATION (START)	STATION (FINISH)	O/S	DETECTABLE WARNINGS	COMBINATION CONCRETE CURB AND GUTTER, TYPE M-6.12 (ABUTTING EXISTING PAVEMENT)	SIGN PANEL - TYPE 1	TELESCOPING STEEL SIGN SUPPORT	PAINT PAVEMENT MARKING - LINE 4"
			SQ FT	FOOT	SQ FT	FOOT	FOOT
102+52.46	103+26.91	14.57 LT to 16.76 LT		40			
102+60.90	103+11.29	18.81 LT to 18.83 LT	25				
105+66.42		18.35 RT			3	15	
105+91.31	106+06.32	16.33 LT to 16.20 LT		15			
105+95.57	105+96.12	16.13 LT to 17.22 RT					33
105+96.40	106+01.38	18.08 LT to 17.90 LT	10				
106+03.07	106+03.63	15.91 LT to 21.39 RT					37
106+30.64		17.23 LT			3	15	
109+02.83	200+44.26	15.84 LT to 12.64 LT		33			
109+07.88	200+39.34	17.84 LT to 14.90 LT	39				
	201+91.21	19.26 LT			3	15	
202+02.72	202+35.27	20.59 LT to 13.24 LT					41
202+10.12	202+25.78	26.10 LT to 20.70 LT					30
202+07.07	202+09.67	19.37 LT to 27.25 LT		10			
202+08.28	202+09.67	23.78 LT to 27.26 LT	10				
202+25.77	202+45.17	20.69 LT to 12.41 LT		21			
202+28.11	202+40.18	19.76 LT to 13.92 LT	25				
211+51.58	211+72.24	11.97 LT to 21.90 LT		26			
211+62.59	211+70.20	13.87 LT to 20.40 LT	20				
300+15.55	300+33.36	32.81 RT to 14.27 RT		28			
300+18.64	300+25.40	25.73 RT to 18.26 RT	19				
	306+27.80	25.73 RT			3	15	
306+48.26	306+66.74	13.52 RT to 15.99 RT		19			
306+56.55	306+64.26	15.63 RT to 17.37 RT	15				
	307+39.57	24.15 LT			3	15	
306+51.20	307+73.42	15.32 LT to 13.77 LT		91			
306+56.21	306+62.62	17.29 LT to 19.14 LT	14				
306+56.58	306+56.58	15.34 LT to 13.53 RT					29
306+64.78	306+64.78	16.94 LT to 14.97 RT					32
TOTAL			177	283	15	75	141

FAU RTE.	SECTION	COUNTY	TOTAL SHEETS	SHEET NO.
N/A	22-00048-00-SW	BOND	15	4
ILLINOIS PROJECT		9P29(946)	CONTRACT NO. 97805	

BY	DATE	REVISION/USED
MMH	07/30/23	
XXX		
FIELD BOOK	DRAWN BY	SAF
	CHECKED BY	MJH/RB
	FILE LOCATION	S:\2022\21212B\21212B.DWG
	SAVE DATE	7/13/2023 09:32
<b>MILANO &amp; GRUNLOH ENGINEERS, LLC</b> 114 W. WASHINGTON AVE.   PO BOX 897 EFFINGHAM, IL 62401 Phone: (217) 947-7262   (800) 677-2714 Email: mgenr@mgengineers.com Web: www.mgenr.com Design Firm # 184-003108		
SCHEDULE OF QUANTITIES PROPOSED SAFE ROUTES TO SCHOOL 22-00048-00-SW GREENVILLE, ILLINOIS		
SHEET # 4 OF 15		
JOB # 21212BG4		

STATION	SEEDING, CLASS 1 (SPECIAL)	PERIMETER EROSION BARRIER
	ACRE	FOOT
TOTAL	0.75	2500

STATION (START)	STATION (FINISH)	O/S	PORTLAND CEMENT CONCRETE DRIVEWAY PAVEMENT, 6 INCH
			SQ YD
104+50.19	104+68.73	24.47 LT to 24.52 LT	9
105+29.20	105+46.90	24.72 LT to 24.75 LT	9
105+65.77	105+75.72	24.68 LT to 24.63 LT	5
106+80.61	106+99.48	24.02 LT to 24.50 LT	10
107+16.13	107+33.87	24.69 LT to 24.98 LT	10
107+74.46	107+92.44	24.95 LT to 24.61 LT	12
202+80.46	203+00.25	20.15 LT to 20.20 LT	11
204+31.26	204+47.30	20.27 LT to 20.26 LT	9
205+04.05	205+22.14	20.10 LT to 20.08 LT	19
205+34.07	205+50.85	20.08 LT to 20.06 LT	14
206+03.82	206+23.27	20.16 LT to 20.14 LT	20
207+15.43	207+27.78	20.10 LT to 20.09 LT	12
207+89.26	208+07.41	20.00 LT to 20.05 LT	19
208+18.11	208+42.82	17.94 LT to 18.05 LT	31
209+32.06	209+49.87	13.95 LT to 14.17 LT	10
210+12.59	210+31.41	20.19 LT to 20.17 LT	20
210+67.71	210+80.86	20.01 LT to 19.88 LT	7
300+58.26	300+77.88	21.93 RT to 22.55 RT	11
301+90.16	302+04.53	22.62 RT to 22.77 RT	9
304+15.70	304+37.90	21.82 RT to 22.20 RT	12
304+86.14	304+96.66	21.67 RT to 21.42 RT	10
308+63.30	308+82.08	21.85 LT to 21.84 LT	14
309+37.76	309+54.72	22.16 LT to 22.06 LT	10
310+19.69	310+36.47	21.94 LT to 21.92 LT	13
310+99.86	311+16.49	21.84 LT to 21.88 LT	13
311+79.27	311+96.36	22.24 LT to 22.18 LT	13
312+21.95	312+31.48	22.14 LT to 22.22 LT	5
TOTAL			337

FAU RTE.	SECTION	COUNTY	TOTAL SHEETS	SHEET NO.
N/A	22-00046-00-SW	BOND	15	5
ILLINOIS PROJECT 9P29(946)		CONTRACT NO. 97805		

STATION	OFFSET	COMBINATION CURB AND GUTTER REMOVAL	SIDEWALK REMOVAL	DRIVEWAY PAVEMENT REMOVAL
		FOOT	SQ FT	SQ YD
Sta. 100+36.14 to Sta. 102+64.72	14.75 LT to 21.03 LT		900	
Sta. 102+52.46 to 103+26.91	14.57 LT to 16.76 LT	40		
Sta. 103+76.14 to Sta. 103+90.71	18.15 LT to 18.05 LT			9
Sta. 104+48.23 to Sta. 104+72.52	18.43 LT to 18.52 LT			23
Sta. 105+28.91 to Sta. 105+47.65	18.71 LT to 18.75 LT			21
Sta. 105+64.14 to Sta. 105+77.19	18.64 LT to 18.62 LT			12
Sta. 105+91.31 to Sta. 106+06.32	16.33 LT to 16.20 LT	15		
Sta. 106+80.81 to Sta. 106+99.60	17.91 LT to 18.44 LT			23
Sta. 107+13.64 to Sta. 107+35.69	18.63 LT to 19.01 LT			23
Sta. 107+74.50 to Sta. 107+92.83	18.95 LT to 18.61 LT			25
Sta. 109+02.83 to Sta. 200+44.26	15.84 LT to 12.64 LT	33		
Sta. 200+84.91 to Sta. 201+10.90	14.09 LT to 14.17 LT			16
Sta. 201+18.19 to Sta. 201+38.23	14.33 LT to 14.24 LT			13
Sta. 202+07.07 to Sta. 202+09.67	19.37 LT to 27.25 LT	10		
Sta. 202+25.77 to Sta. 202+45.17	20.69 LT to 12.41 LT	21		
Sta. 202+78.79 to Sta. 203+01.39	14.13 LT to 14.20 LT			25
Sta. 204+30.14 to Sta. 204+48.08	14.27 LT to 14.21 LT			20
Sta. 205+02.27 to Sta. 205+23.88	14.10 LT to 14.02 LT			32
Sta. 205+30.12 to Sta. 205+53.78	14.11 LT to 14.06 LT			27
Sta. 206+01+00 to Sta. 206+25.95	14.16 LT to 14.13 LT			34
Sta. 207+12.54 to Sta. 207+31.14	14.09 LT to 14.07 LT			22
Sta. 207+88.29 to Sta. 208+08.23	14.00 LT to 14.08 LT			31
Sta. 208+18.12 to Sta. 208+42.84	13.94 LT to 14.05 LT			42
Sta. 209+32.06 to Sta. 209+49.87	13.95 LT to 14.17 LT			22
Sta. 210+12.50 to Sta. 210+31.34	14.18 LT to 14.17 LT			32
Sta. 210+64.14 to Sta. 210+84.40	14.00 LT to 13.84 LT			18
Sta. 211+51.58 to Sta. 211+72.24	11.97 LT to 21.90 LT	26		
Sta. 300+15.55 to Sta. 300+33.36	32.81 RT to 14.27 RT	28		
Sta. 300+59.10 to Sta. 300+78.81	15.84 RT to 16.57 RT			25
Sta. 301+26.00 to Sta. 301+37.43	16.89 RT to 16.93 RT			8
Sta. 301+90.15 to Sta. 302+04.53	16.79 RT to 16.81 RT			19
Sta. 302+56.87 to Sta. 302+81.45	16.24 RT to 16.38 RT			14
Sta. 304+14.01 to Sta. 304+38.89	15.67 RT to 16.06 RT			27
Sta. 304+83.48 to Sta. 304+99.16	15.59 RT to 15.31 RT			18
Sta. 305+12.01 to Sta. 305+14.90	15.59 RT to 15.63 RT		23	
Sta. 306+00.05 to Sta. 306+03.41	15.83 RT to 15.73 RT		27	
Sta. 306+48.26 to Sta. 306+66.74	13.52 RT to 15.99 RT	19		
Sta. 306+51.20 to Sta. 307+73.42	15.32 LT to 13.77 LT	91		
Sta. 307+73.42 to Sta. 307+95.71	15.83 LT to 15.94 LT			13
Sta. 308+59.04 to Sta. 308+81.27	15.86 LT to 15.83 LT			27
Sta. 309+36.24 to Sta. 309+56.05	16.15 LT to 16.04 LT			21
Sta. 310+18.01 to Sta. 310+38.11	15.92 LT to 15.92 LT			25
Sta. 310+99.83 to Sta. 311+16.49	15.83 LT to 15.79 LT			24
Sta. 311+79.29 to Sta. 311+96.37	16.15 LT to 16.12 LT			25
Sta. 312+21.94 to Sta. 312+31.51	16.13 LT to 16.22 LT			12
TOTAL		283	950	728

STATION	OFFSET	DOMESTIC METER VAULTS TO BE ADJUSTED	WATER VALVES TO BE ADJUSTED	INLETS TO BE ADJUSTED	RELOCATE SIGN PANEL ASSEMBLY - TYPE A	CLEANOUT TO BE ADJUSTED
		EACH	EACH	EACH	EACH	EACH
Sta. 102+10.08	21.95 LT				1	
Sta. 103+09.56	20.58 LT				1	
Sta. 103+29.41	19.72 LT					1
Sta. 104+24.79	20.21 LT					1
Sta. 104+35.79	24.29 LT	1				
Sta. 104+97.61	20.69 LT					1
Sta. 105+18.27	26.70 LT	1				
Sta. 105+64.28	25.04 LT					1
Sta. 106+48.66	18.57 LT					1
Sta. 107+10.59	20.68 LT					1
Sta. 107+30.25	28.90 LT	1				
Sta. 200+46.16	18.23 LT				1	
Sta. 201+74.73	18.23 LT	1				
Sta. 202+03.28	22.88 LT	1				
Sta. 203+10.79	17.25 LT	1				
Sta. 204+53.58	18.29 LT	1				
Sta. 206+01.50	18.26 LT	1				
Sta. 206+88.08	18.43 LT	1				
Sta. 207+37.36	18.94 LT		1			
Sta. 207+43.68	17.78 LT	1				
Sta. 208+52.66	18.71 LT	1				
Sta. 209+11.81	19.19 LT	1				
Sta. 210+04.09	19.65 LT	1				
Sta. 210+43.18	16.89 LT				1	
Sta. 210+54.90	19.46 LT		1			
Sta. 210+89.95	17.41 LT	1				
Sta. 211+53.60	17.86 LT		1			
Sta. 300+23.18	17.94 RT			1		
Sta. 300+90.34	18.60 RT				1	
Sta. 301+55.54	22.32 RT	1				
Sta. 307+54.22	17.97 LT				1	
Sta. 309+21.23	20.31 LT	1				
Sta. 310+37.78	19.16 LT					1
Sta. 310+96.21	19.19 LT	1				
Sta. 312+00.09	21.53 LT	1				
TOTAL		18	3	1	6	7

EARTHWORK SCHEDULE			
(1)	(2)	(3)	(4)
EARTH EXCAVATION (CUT)	EARTH EXCAVATION (FILL)	EARTH EXCAVATION DIFFERENCE (EXCESS DIRT)	EARTH TO BE HAULED OFF (25% SWELL FACTOR)
CUBIC YARD	CUBIC YARD	CUBIC YARD	CUBIC YARD
75	50	25	31
*Earthwork calculations assume full width and 6" topsoil stripping for area of improvements. All topsoil stripping may be used as topsoil placement.			

1

STATION	OFFSET	TREE REMOVAL (OVER 15 UNITS DIAMETER)	SHRUB REMOVAL	REMOVE AND RELOCATE FLAGPOLE	FENCE REMOVAL	CONCRETE RETAINING WALL REMOVAL
		UNITS	EACH	EACH	FOOT	FOOT
Sta. 107+04.03 to Sta. 107+12.41	19.43 LT to 19.79 LT					16
Sta. 107+62.46 to Sta. 107+70.79	20.52 LT to 20.54 LT					16
Sta. 107+99.13	26.43 LT	30				
Sta. 109+04.02	23.36 LT		1			
Sta. 206+40.27	21.84 LT	36				
Sta. 209+71.67 to Sta. 210+04.40	22.60 LT to 22.21 LT				35	
Sta. 303+55.70 to Sta. 303+74.0	19.9 RT				20	
Sta. 303+57.32	21.05 RT			1		
Sta. 305+96.53	19.00 RT	24				
Sta. 311+18.43	22.60 LT		1			
TOTAL		90	2	1	55	32

FAU RTE.	SECTION	COUNTY	TOTAL SHEETS	SHEET NO.
N/A	22-00046-00-SW	BOND	15	5
ILLINOIS PROJECT 9P29(946)		CONTRACT NO. 97805		

BY	DATE	REVISION	USED
MJH	07/30/23		

FIELD BOOK	XXX
DRAWN BY	BAF
CHECKED BY	MJH/RB
FILE LOCATION	S:\2022\2121212121212121\DWG\TITLE.DWG
SAVE DATE	7/13/2023 09:32

**MILANO & GRUNLOH ENGINEERS, LLC**  
114 W. WASHINGTON AVE. | PO BOX 897  
EFFINGHAM, IL 62401  
Phone: (217) 347-7262 | (800) 677-2714  
Email: mgen@mgengineers.com  
Web: www.mgengineers.com  
Design Firm # 184-003108

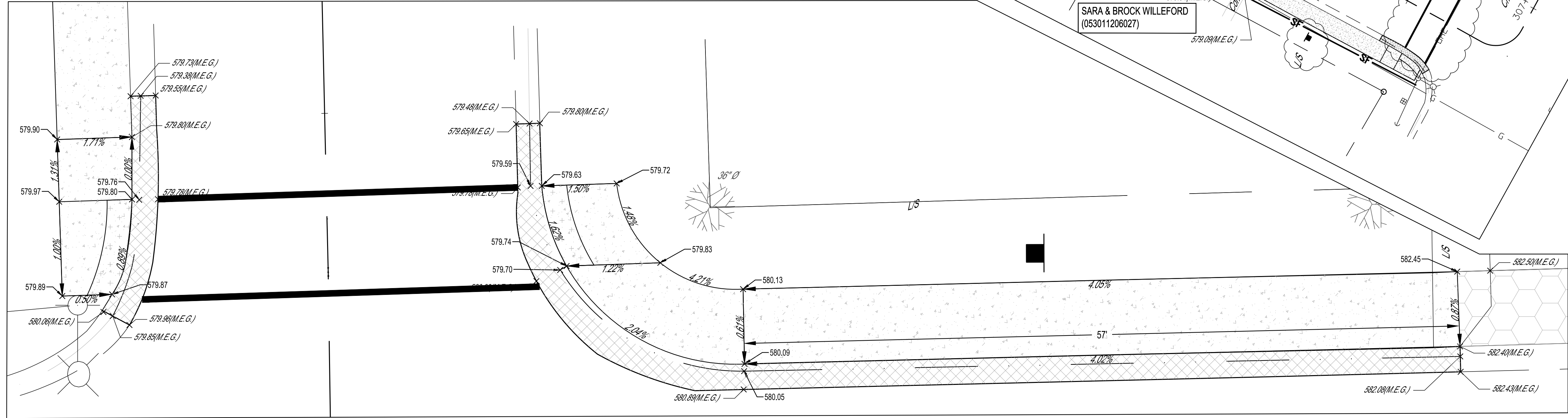
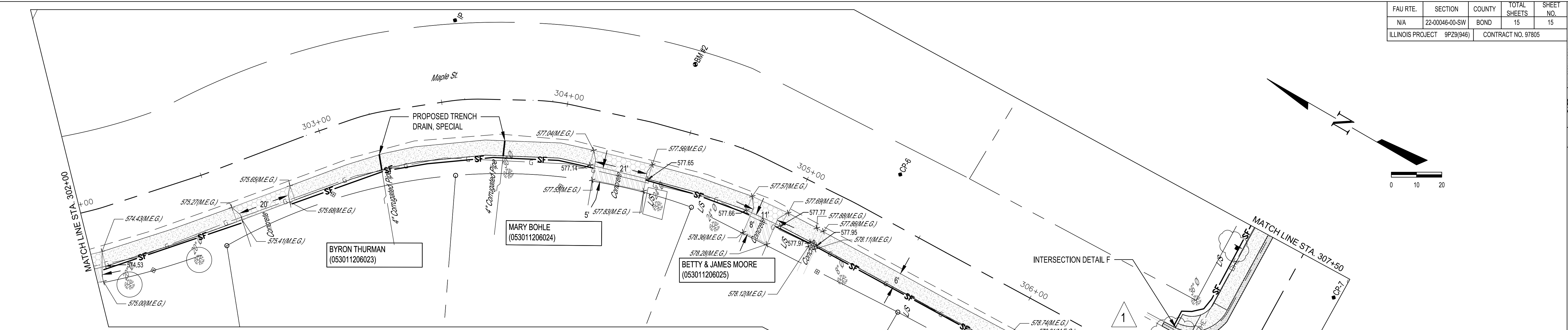
SCHEDULE OF QUANTITIES REMOVED	SAFE ROUTES TO SCHOOL
	22-00046-00-SW
	GREENVILLE, ILLINOIS

SHEET #	5 OF 15
JOB #	21212BG4



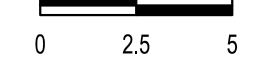
FAU RTE.	SECTION	COUNTY	TOTAL SHEETS	SHEET NO.
N/A	22-00048-00-SW	BOND	15	15
ILLINOIS PROJECT 9P29(946)		CONTRACT NO. 97805		



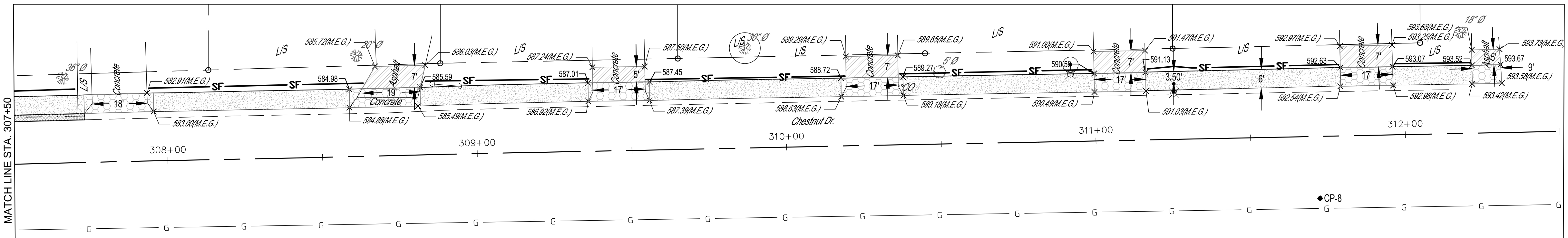
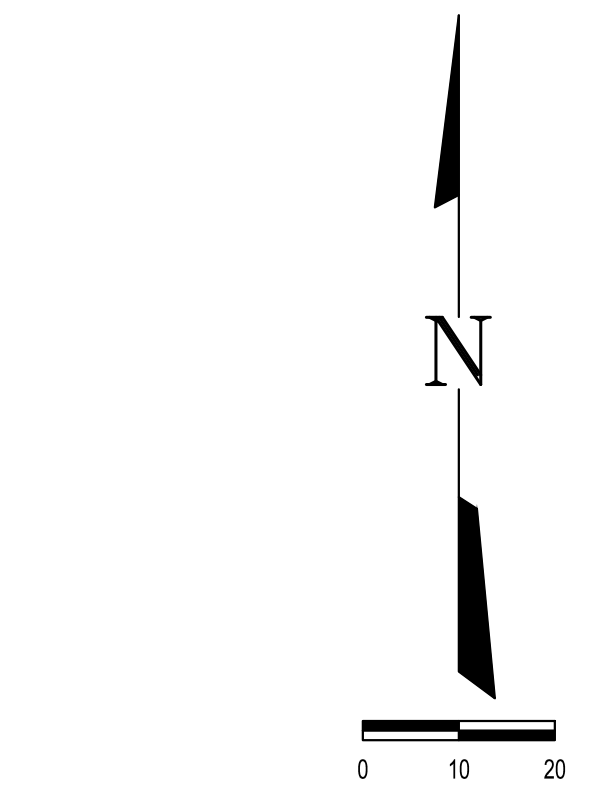
### LEGEND

- TREE (DECIDUOUS)
- FIRE HYDRANT
- SIGN
- SLOPE AS SHOWN
- CLEANOUT
- WATER METER
- PROPOSED ADA DETECTABLE WARNING PANEL
- PROPOSED 4" PCC SIDEWALK
- PROPOSED 6" PCC SIDEWALK
- PROPOSED 6" ASPHALT PAVEMENT
- PROPOSED 6" PCC PAVEMENT
- PROPOSED CURB & GUTTER

CHESTNUT DR & MAPLE ST  
INTERSECTION DETAIL F



NOTE: PROPOSED CURB SHALL BE FLUSH WITH PROPOSED SIDEWALK.



DATE	REVISION	DATE	REVISION
07/15/2023			
BY	DATE	REVISION	DATE
MJH			

FIELD BOOK	XXX
DRAWN BY	BAF
CHECKED BY	MJH/LRB
FILE LOCATION	S:\2022\1212\22-00048-00-SW\SIDEWALK.DWG
SAVE DATE	7/13/2023 09:37

**MILANO & GRUNLOH ENGINEERS, LLC**  
 114 W. WASHINGTON AVE. | PO BOX 897  
 EFFINGHAM, IL 62401  
 Phone: (217) 347-7262 | (800) 677-2714  
 Email: mgenr@milanoandgrunloh.com  
 Web: www.milanoandgrunloh.com  
 Design Firm # 184-003108

SIDEWALK PLANS STA. 302+00 to 312+33  
 SAFE ROUTES TO SCHOOL  
 22-00048-00-SW  
 GREENVILLE, ILLINOIS

SHEET #  
15 OF 15  
 JOB #  
21212BG4