

08-04-2023 LETTING ITEM 073

INDEX OF SHEETS ON SHEET NO. 2

HIGHWAY STANDARDS ON SHEET NO. 2

STATE OF ILLINOIS DEPARTMENT OF TRANSPORTATION SAFE ROUTES TO SCHOOL

SECTION 22-00046-00-SW

JOB NO. C-98-036-24

PROJECT NO. 9PZ9(946)

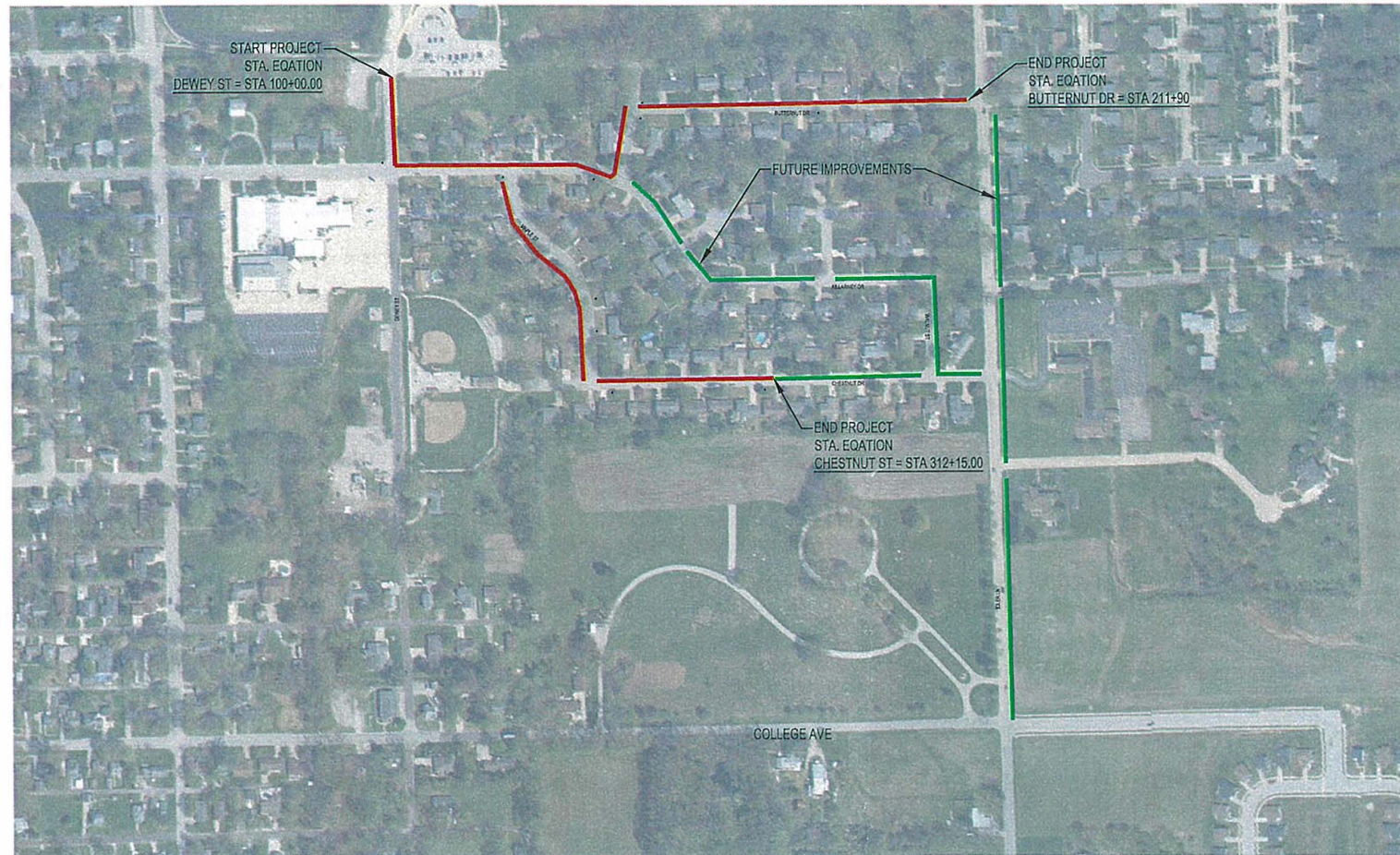
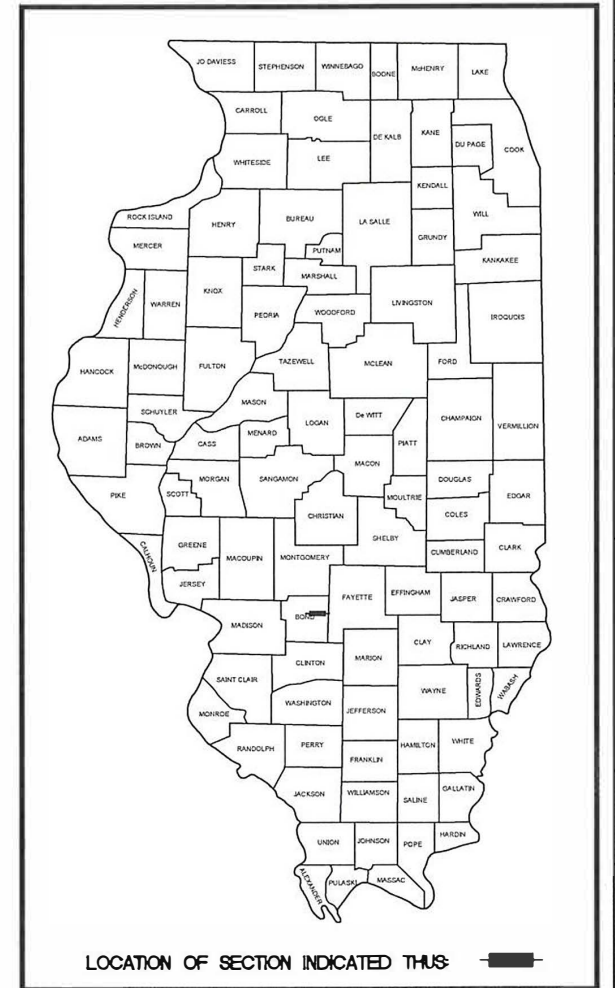
CITY OF GREENVILLE

BOND COUNTY, ILLINOIS

CONTRACT 97805

S11 T5N R3W

FAU RTE.	SECTION	COUNTY	TOTAL SHEETS	SHEET NO.
N/A	22-00046-00-SW	BOND	15	1
ILLINOIS PROJECT 9PZ9(946)		CONTRACT NO. 97805		



— PHASE I PROJECT AREA
— PHASE II PROJECT AREA (FUTURE IMPROVEMENTS)

LOCATION MAP
CITY OF GREENVILLE

PLAN	0 20 40
PROFILE (HORIZONTAL)	0 20 40
PROFILE (VERTICAL)	0 5 10
CROSS SECTIONS (HORIZONTAL)	0 10 20
CROSS SECTIONS (VERTICAL)	0 5 10

DESIGN STAGE J.U.L.I.E. DIG NUMBER

DIG # A222504100

J.U.L.I.E.

JOINT UTILITY LOCATION INFORMATION FOR EXCAVATION
1-800-892-0123

UTILITY NOTE

THE LOCATIONS OF THOSE BURIED AND ABOVEGROUND UTILITIES SHOWN ARE APPROXIMATE, ARE SHOWN FOR CONTRACTOR INFORMATIONAL USE ONLY, AND ARE NOT TO BE REFERENCED FOR CONSTRUCTION PURPOSES. THE IMPLIED PRESENCE OR ABSENCE OF UTILITIES IS NOT TO BE CONSTRUED BY THE OWNER, ENGINEER, CONTRACTOR, OR SUBCONTRACTORS TO BE AN ACCURATE AND COMPLETE REPRESENTATION OF UTILITIES THAT MAY OR MAY NOT EXIST ON THE CONSTRUCTION SITE. BURIED AND ABOVEGROUND UTILITY LOCATION, IDENTIFICATION, AND MARKING ARE THE SOLE RESPONSIBILITY OF THE CONTRACTOR. REROUTING, DISCONNECTION, PROTECTION, ETC. OF ANY UTILITIES MUST BE COORDINATED BETWEEN THE CONTRACTOR, UTILITY COMPANY, AND OWNER. SITE SAFETY, INCLUDING THE AVOIDANCE OF HAZARDS ASSOCIATED WITH BURIED AND ABOVEGROUND UTILITIES, REMAIN THE SOLE RESPONSIBILITY OF THE CONTRACTOR. CONTRACTOR MUST CONTACT J.U.L.I.E. 48 HOURS PRIOR TO THE BEGINNING OF CONSTRUCTION.

Dewey Street
FUNCTIONAL CLASSIFICATION - Local Road/Street
ADT (2018 Highest data) - 500 vpd

Killarney Drive
FUNCTIONAL CLASSIFICATION - Local Road/Street
ADT (2018 Highest data) - 800 vpd

Maple Street
FUNCTIONAL CLASSIFICATION - Local Road/Street
ADT (2018 Highest data) - 175 vpd

Chestnut Street
FUNCTIONAL CLASSIFICATION - Local Road/Street
ADT (2018 Highest data) - 175 vpd

Butternut Drive
FUNCTIONAL CLASSIFICATION - Local Road/Street
ADT (2021 Highest data) - 300 vpd

LENGTH OF PROJECT

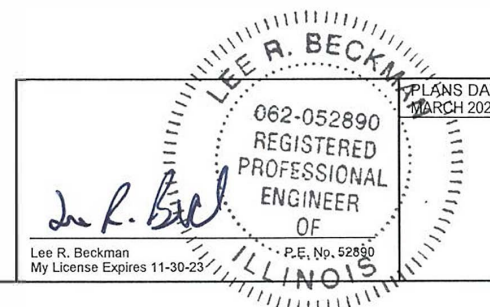
Dewey Street = 238 FEET (0.05 MILES)
Killarney Drive = 617 FEET (0.12 MILES)
Maple Street = 688 FEET (0.13 MILES)
Chestnut Street = 553 FEET (0.10 MILES)
Butternut Drive = 1127 FEET (0.21 MILES)
TOTAL = 3,223 FEET (0.61 MILES)

APPROVED George Bauer 4/4/23
MAYOR, CITY OF GREENVILLE

PASSED 6/2/2023
DISTRICT EIGHT ENGINEER OF LOCAL ROADS & STREETS

Releasing For Limited Review 6/2/2023
REGION FIVE ENGINEER
STATE OF ILLINOIS
DEPARTMENT OF TRANSPORTATION

PRINTED BY THE AUTHORITY OF THE STATE OF ILLINOIS



DATE	REVISION	ISSUED
XXX	XXXXXXXX	XXX
FIELD BOOK	XXX	XXX
DRAWN BY	BAF	XXX
CHECKED BY	MUHLB	XXX
FILE LOCATION	S:\2021\1212BG4\1212BG4.DWG	
SAVE DATE	3/29/2023 10:47	
MILANO & GRUNLOH ENGINEERS, LLC	114 W. WASHINGTON AVE. PO BOX 897	
EFFINGHAM, IL 62401	Phone: (217) 347-7262 (800) 877-2714	
	Email: mgengeers@mgengeers.com	
	Web: www.mgengeers.com	
	Design Firm # 184-003108	
TITLE SHEET	SAFE ROUTES TO SCHOOL	
	22-00046-00-SW	
	GREENVILLE, ILLINOIS	
SHEET #	1 OF 15	
JOB #	21212BG4	

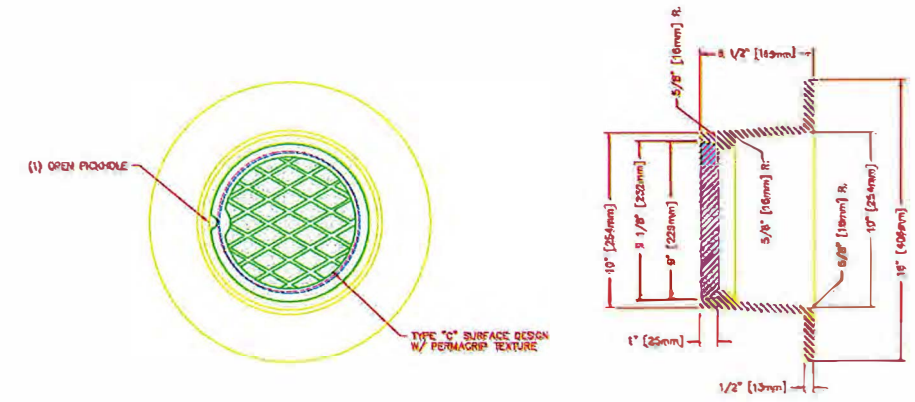
PLANS DATED: MARCH 2023

FAU RTE.	SECTION	COUNTY	TOTAL SHEETS	SHEET NO.
NA	22-00046-00-SW	BOND	15	2
ILLINOIS PROJECT 9PZ9(946)		CONTRACT NO. 97805		

INDEX OF SHEETS

1	TITLE SHEET
2	INDEX OF SHEETS AND STANDARDS & GENERAL NOTES SHEET & DETAILS
3	SUMMARY OF QUANTITIES
4-5	SCHEDULE OF QUANTITIES
6	TYPICAL SECTIONS
7	BENCHMARK AND ALIGNMENT SHEET
8-11	REMOVAL SHEETS
12-15	SIDEWALK PLAN SHEETS

STANDARD	DESCRIPTION
280001-07	Temporary Erosion Control Systems
424001-11	Perpendicular Curb Ramps for Sidewalks
424011-04	Corner Parallel Curb Ramps for Sidewalks
424016-05	Mid-Block Curb Ramps for Sidewalks
424021-06	Depressed Corner for Sidewalks
424026-03	Entrance/Alley Pedestrian Crossings
606001-08	Concrete Curb Type B and Combination Concrete Curb and Gutter
701001-02	Off-Road Operations, 2L, 2W, More Than 15' (4.5 m) Away
701006-05	Off-Road Operations, 2L, 2W, 15' (4.5 m) to 24" (600 mm) from Pavement Edge
701011-04	Off-Road Moving Operations, 2L, 2W, Day Only
701301-04	Lane Closure, 2L, 2W, Short Tim Operations
701501-06	Urban Lane Closure, 2L 2W, Undivided
701801-06	Sidewalk, Corner or Crosswalk Closure
701901-08	Traffic Control Devices
720001-01	Sign Panel Mounting Details
720006-04	Sign Panel Erection Details
720011-01	Metal Posts for Signs, Markers & Delineators
728001-01	Telescoping Steel Sign Support



NOTE: ALL DIMENSIONS ARE SHOWN IN ENGLISH AND [METRIC]
 COMPONENT NO'S: FRAME 1974-2000, LD 1974-0012
 MATERIALS: CAST GRAY IRON ASTM A-48, CLASS 35B
 FINISH: NO PAINT
 WEIGHT: FRAME 41#, LD 16#

REV	E. REMARK	DATE	BY	CHKD
1	FRAME AND SOLID PLATEN LD	10-15-98	NEENAH	NEENAH

CLEANOUT TO BE ADJUSTED

LEGEND

●	IRON PIN SET
○	IRON PIN FOUND
☼	TREE (DECIDUOUS)
⊕	FIRE HYDRANT
⊗	WATER METER
⊕	VALVE (GAS OR WATER)
⊗	GAS METER
○ GAS	GAS MARKER
⊕ T	TELEPHONE PEDESTAL
○ P	POWER POLE
⊕	GUY ANCHOR
⊕ E	ELECTRIC PEDESTAL
⊕ EM	ELECTRIC METER
⊕	SIGN
○ B	BOLLARD
○	WOOD POST
⊕	SANITARY MANHOLE
---	EXISTING OVERHEAD ELECTRIC
---	EXISTING UNDERGROUND ELECTRIC
---	EXISTING GAS
---	SANITARY SEWER
---	STORM SEWER
---	EXISTING TELE-COMMUNICATIONS LINE
---	EXISTING FIBER OPTIC LINE
x 100.00	PROPOSED ELEVATION
x 100.00	EXISTING ELEVATION
x 100.00 (M.E.G.)	(MATCH EXISTING GRADE)
□ IP	INLET PROTECTION
□ PP	PIPE PROTECTION
---	SILT FENCE

COMMITMENTS

1. Trees three inches or greater at breast height shall not be cleared from April 1 Through September 30 of any given year.

GENERAL NOTES

- Pavement grades shown are at the top of pavement surfaces, unless otherwise noted in the plans.
- Erosion control measures shall be in accordance with IDOT Specifications. Placement shall be directed by the Engineer.
- All elevations refer to U.S.G.S. mean sea level datum. - NAVD 88
- Any reference to a standard in the plans shall be interpreted to mean the edition as indicated by the sub-number listed on Sheet 2.
- CURB AND GUTTER, WALKS, SLABS, AND PCC DRIVEWAY PAVEMENT
 - A. Concrete walks shall be in accordance with IDOT Std. Spec. Unless otherwise shown, locate sidewalk contraction joints at 5 ft on center and expansion joints at 50 ft on center, unless otherwise shown, locate contraction joints in larger slabs at 12 ft intervals in each direction.
 - B. Concrete walks crossing through entrances shall be constructed in accordance with the detail shown on sheet 6. Monolithically constructed sidewalks will not be allowed if greater than 2% cross slope.
 - C. Dowel bars shall be used when Portland Cement Concrete Driveways are placed adjacent to any existing concrete. The dowel bars shall be 2 feet in length and shall be placed on 2 foot centers. Dowel bars shall not be paid for separately but shall be included in the price of the of the Portland Cement Concrete Driveway of the type and depth specified.

- The following rates of application or units were used for calculating plan quantities:
 - Aggregate Surface Course (Type B), Rock Fill, Aggregate Temporary Access - 2.05 Tons/Cu Yd
- All brick and landscaping removal shall be incidental to project.
- Abbreviations:
 - BK CB - Back of Curb
 - EX. - Existing
 - EOP - Edge of Pavement
 - FL - Flowline
 - PCC - Portland Cement Concrete
 - RELOC SIN PAN ASSY TA - Relocate Sign Panel Assembly - Type A
 - DOM MET VLTS ADJ - Domestic Meter Vaults to be Adjusted
 - CONC RETAIN WALL REM - Concrete Retaining Wall Removal
 - REM & REL FLAGPOLE - Remove and Relocate Flagpole

ACO Drain
SlabDrain - H100K-6 Galvanized Steel Edge Rail Channel System

May 2020

Specifications

General
 The surface drainage system shall be ACO Drain SlabDrain H100K-6 complete with grates secured with the Decklok as manufactured by ACO, Inc. or equal approved.

Materials
 The trench system bodies shall be manufactured from polypropylene or concrete with minimum properties as follows:
 Compressive strength: 13,000 psi
 Residual strength: 3,100 psi
 Water absorption: 0.07%
 Frost proof
 SPI proof
 Dilute acid and alkali resistant

The nominal clear opening shall be 4.00" (100 mm) with overall width of 5.12" (130 mm). The cast units shall be manufactured with neutral steel and have a wall thickness of at least 0.3" (7.6 mm). Each unit shall be made to female interlocking end profile. The galvanized steel edge rail will be integrally cast in by the manufacturer to ensure maximum homogeneity between polypropylene concrete body and edge rail. Each edge rail shall be at least 1.5" (38 mm) thick.

Grates
 Grates should be specified. See separate ACO Specification sheets for details. After removal of grates, there shall be unobstructed access to the trench to aid maintenance.

Installation
 The trench drain system shall be installed in accordance with the manufacturer's installation instructions and recommendations.

Outlet Flow Rates

Outlet Size (SCH 40)	Invert Depth (in mm)	GPM	CFS
H100K-6 Neutral Channel - 39.37" (1 m)	4" round	1.78 (45)	71.8 0.16

Notes: These are the pipe flow rates at the specified outlet, NOT channel flow rates.

H100K-6 Parts

Part #	Invert Depth (in mm)	Weight (lbs)
H100K-6 Neutral Channel - 39.37" (1 m)	1.78 (45)	7.8
H100K-6 Closing Cap	1.78 (45)	0.1

Notes:
 1. Acid nominal 0.6" (15 mm) to invert depth for overall channel depth.
 2. Reinforced 4" SCH 40 knock-out cast on underside of each channel.
 3. Use grate removal tool to remove grates (Part # 01318).

ACO, Inc.

Midwest Sales Office 222 W. Bechtel's Street Cora Goude, IA 51122 Tel: (319) 421-9848 Toll Free: (888) 430-9552 Fax: (531) 421-9899	Northeast Sales Office 9478 Pinecone Drive Morton, GA 31550 Tel: (404) 639-7230 Toll Free: (800) 543-4764 Fax: (404) 639-7235	Southeast Sales Office 4211 Pleasant Road Fort Mill, SC 29505 Tel: (803) 543-3464 Fax: (903) 502-1063	www.aco.com
--	--	---	-------------

ACO, creating the future of drainage

ACO Specification Information

TRENCH DRAIN, SPECIAL

REV	DATE	BY	CHKD
1	10/15/98	NEENAH	NEENAH

FIELD BOOK: XXX
 DRAWN BY: BAF
 CHECKED BY: NMLRB
 FILE LOCATION: S:\2021\21212BG4\TRENCH DRAIN
 SAVE DATE: 3/29/2023 10:47

MILANO & GRUNLOH ENGINEERS, LLC
 114 W. WASHINGTON AVE. | PO BOX 897
 EFFINGHAM, IL 62401
 Phone: (217) 347-7282 | (800) 877-2714
 Email: mgen@milengr.com
 Web: www.milengr.com
 Design Firm #184-003 108

INDEX SHEET
 SAFE ROUTES TO SCHOOL
 22-00046-00-SW
 GREENVILLE, ILLINOIS

SHEET #
 2 OF 15
 JOB #
 21212BG4

STATION (START)	STATION (FINISH)	O/S	PORTLAND CEMENT CONCRETE SIDEWALK 4 INCH	PORTLAND CEMENT CONCRETE SIDEWALK 6 INCH
			SQ FT	SQ FT
100+36.24	103+76.15	14.78 LT to 18.20 LT	1793	
103+76.24	103+90.70	18.19 LT to 18.10 LT		79
103+90.70	104+48.25	18.10 LT to 18.46 LT	360	
104+48.25	104+72.51	18.46 LT to 18.53 LT		125
104+72.51	105+28.93	18.53 LT to 18.67 LT	351	
105+28.93	105+47.64	18.67 LT to 18.75 LT		109
105+47.64	105+64.14	18.75 LT to 18.64 LT	109	
105+64.14	105+77.20	18.64 LT to 18.61 LT		63
105+77.20	106+80.82	24.63 LT to 17.91 LT	636	
106+80.82	106+99.60	17.91 LT to 18.47 LT		113
106+99.60	107+13.65	17.90 LT to 18.63 LT	92	
107+13.65	107+35.69	18.63 LT to 19.01 LT		117
107+35.69	107+74.52	19.01 LT to 18.95 LT	239	
107+74.52	107+92.86	18.95 LT to 18.62 LT		117
107+92.86	200+84.92	18.62 LT to 14.09 LT	1110	
200+84.92	201+10.90	14.09 LT to 14.14 LT		148
201+10.90	201+18.21	14.14 LT to 14.28 LT	48	
201+18.21	201+38.23	14.28 LT to 14.24 LT		120
201+38.23	202+09.67	14.24 LT to 27.25 LT	505	
202+09.67	202+30.83	19.80 LT to 14.15 LT	289	
202+30.83	202+78.79	14.15 LT to 14.22 LT		122
202+78.79	203+01.39	14.22 LT to 14.27 LT	783	
203+01.39	204+30.15	14.27 LT to 14.25 LT		99
204+30.15	204+48.08	14.25 LT to 14.10 LT	337	
204+48.08	205+02.27	14.10 LT to 14.08 LT		114
205+02.27	205+23.88	14.08 LT to 14.11 LT	63	
205+23.88	205+30.12	14.11 LT to 14.06 LT		112
205+30.12	205+53.78	14.06 LT to 14.16 LT	309	
205+53.78	206+01.00	14.16 LT to 14.14 LT		125
206+01.00	206+25.91	14.14 LT to 14.09 LT	544	
206+25.91	207+12.56	14.09 LT to 14.08 LT		87
207+12.56	207+31.10	14.08 LT to 14.00 LT	361	
207+31.10	207+88.29	14.00 LT to 14.05 LT		111
207+88.29	208+08.23	14.05 LT to 13.94 LT	53	
208+08.23	208+18.11	13.94 LT to 14.04 LT		99
208+18.11	208+42.87	14.04 LT to 13.95 LT	526	
208+42.87	209+32.06	13.95 LT to 14.17 LT		107
209+32.06	209+49.87	14.17 LT to 14.18 LT	375	
209+49.87	210+12.49	14.18 LT to 14.17 LT		112
210+12.49	210+31.34	14.17 LT to 13.99 LT	207	
210+31.34	210+64.08	13.99 LT to 13.84 LT		100
210+64.08	211+70.20	13.99 LT to 20.40 LT	514	
211+70.20	300+21.64	25.08 RT to 15.85 RT	237	
300+21.64	300+59.10	15.85 RT to 16.58 RT		122
300+59.10	301+26.01	16.58 RT to 16.86 RT	305	
301+26.01	301+37.43	16.86 RT to 16.93 RT		73
301+37.43	301+90.15	16.93 RT to 16.78 RT	353	
301+90.15	302+04.52	16.78 RT to 16.81 RT		87
302+04.52	302+56.85	16.81 RT to 16.22 RT	339	
302+56.85	302+81.45	16.22 RT to 16.39 RT		130
302+81.45	304+14.00	16.39 RT to 15.74 RT	745	
304+14.00	304+38.88	15.74 RT to 16.16 RT		131
304+38.88	304+83.48	16.16 RT to 15.74 RT	262	
304+83.48	304+99.11	15.74 RT to 15.36 RT		73
304+99.11	306+64.29	15.36 RT to 19.37 RT	1007	
306+64.29	307+73.42	19.37 RT to 15.83 LT	472	
307+73.42	307+95.70	15.83 LT to 15.95 LT		114
307+95.70	308+59.04	15.95 LT to 15.87 LT	402	
308+59.04	308+81.26	15.87 LT to 15.83 LT		121
308+81.26	309+36.25	15.83 LT to 16.18 LT	336	
309+36.25	309+56.05	16.18 LT to 16.04 LT		106
309+56.05	310+18.02	16.04 LT to 15.94 LT	384	
310+18.02	310+38.10	15.94 LT to 15.92 LT		106
310+38.10	310+99.86	15.92 LT to 15.84 LT	378	
310+99.86	311+16.49	15.84 LT to 15.79 LT		101
311+16.49	311+79.27	17.06 LT to 16.05 LT	340	
311+79.27	311+96.36	16.05 LT to 16.13 LT		103
311+96.36	312+21.95	16.13 LT to 16.13 LT	154	
312+21.95	312+31.48	16.13 LT to 16.22 LT		57
TOTAL			15318	3503

FAU RTE.	SECTION	COUNTY	TOTAL SHEETS	SHEET NO.
N/A	22-00048-00-SW	BOND	15	4
ILLINOIS PROJECT 9P29(946)		CONTRACT NO. 97805		

EARTHWORK SCHEDULE			
(1)	(2)	(3)	(4)
EARTH EXCAVATION (CUT)	EARTH EXCAVATION (FILL)	EARTH EXCAVATION DIFFERENCE (EXCESS DIRT)	EARTH TO BE HAULED OFF (25% SWELL FACTOR)
CUBIC YARD	CUBIC YARD	CUBIC YARD	CUBIC YARD
75	50	25	31
*Earthwork calculations assume full width and 6" topsoil stripping for area of improvements. All topsoil stripping may be used as topsoil placement.			

STATION (START)	STATION (FINISH)	O/S	DETECTABLE WARNINGS	COMBINATION CONCRETE CURB AND GUTTER, TYPE M-6.12 (ABUTTING EXISTING PAVEMENT)	SIGN PANEL - TYPE 1	TELESCOPING STEEL SIGN SUPPORT	PAINT PAVEMENT MARKING - LINE 4"
			SQ FT	FOOT	SQ FT	FOOT	FOOT
102+52.46	103+26.91	14.57 LT to 16.76 LT		40			
102+60.90	103+11.29	18.81 LT to 18.83 LT	25				
105+66.42		18.35 RT			3	15	
105+91.31	106+06.32	16.33 LT to 16.20 LT		15			
105+95.57	105+96.12	16.13 LT to 17.22 RT					33
105+96.40	106+01.38	18.08 LT to 17.90 LT	10				
106+03.07	106+03.63	15.91 LT to 21.39 RT					37
106+30.64		17.23 LT			3	15	
109+02.83	200+44.26	15.84 LT to 12.64 LT		33			
109+07.88	200+39.34	17.84 LT to 14.90 LT	39				
202+07.07	202+09.67	19.37 LT to 27.25 LT		10			
202+08.28	202+09.67	23.78 LT to 27.26 LT	10				
202+25.77	202+45.17	20.69 LT to 12.41 LT		21			
202+28.11	202+40.18	19.76 LT to 13.92 LT	25				
211+51.58	211+72.24	11.97 LT to 21.90 LT		26			
211+62.59	211+70.20	13.87 LT to 20.40 LT	20				
300+15.55	300+33.36	32.81 RT to 14.27 RT		28			
300+18.64	300+25.40	25.73 RT to 18.26 RT	19				
306+48.26	306+66.74	13.52 RT to 15.99 RT		19			
306+56.55	306+64.26	15.63 RT to 17.37 RT	15				
306+51.20	307+73.42	15.32 LT to 13.77 LT		91			
306+56.21	306+62.62	17.29 LT to 19.14 LT	14				
TOTAL			177	283	6	30	70

STATION	SEEDING, CLASS 1 (SPECIAL)	PERIMETER EROSION BARRIER
	ACRE	FOOT
TOTAL	0.75	2500

STATION (START)	STATION (FINISH)	O/S	PORTLAND CEMENT CONCRETE DRIVEWAY PAVEMENT, 6 INCH
			SQ YD
104+50.19	104+68.73	24.47 LT to 24.52 LT	9
105+29.20	105+46.90	24.72 LT to 24.75 LT	9
105+65.77	105+75.72	24.68 LT to 24.63 LT	5
106+80.61	106+99.48	24.02 LT to 24.50 LT	10
107+16.13	107+33.87	24.69 LT to 24.98 LT	10
107+74.46	107+92.44	24.95 LT to 24.61 LT	12
202+80.46	203+00.25	20.15 LT to 20.20 LT	11
204+31.26	204+47.30	20.27 LT to 20.26 LT	9
205+04.05	205+22.14	20.10 LT to 20.08 LT	19
205+34.07	205+50.85	20.08 LT to 20.06 LT	14
206+03.82	206+23.27	20.16 LT to 20.14 LT	20
207+15.43	207+27.78	20.10 LT to 20.09 LT	12
207+89.26	208+07.41	20.00 LT to 20.05 LT	19
208+18.11	208+42.82	17.94 LT to 18.05 LT	31
209+32.06	209+49.87	13.95 LT to 14.17 LT	10
210+12.59	210+31.41	20.19 LT to 20.17 LT	20
210+67.71	210+80.86	20.01 LT to 19.88 LT	7
300+58.26	300+77.88	21.93 RT to 22.55 RT	11
301+90.16	302+04.53	22.62 RT to 22.77 RT	9
304+15.70	304+37.90	21.82 RT to 22.20 RT	12
304+86.14	304+96.66	21.67 RT to 21.42 RT	10
308+63.30	308+82.08	21.85 LT to 21.84 LT	14
309+37.76	309+54.72	22.16 LT to 22.06 LT	10
310+19.69	310+36.47	21.94 LT to 21.92 LT	13
310+99.86	311+16.49	21.84 LT to 21.88 LT	13
311+79.27	311+96.36	22.24 LT to 22.18 LT	13
312+21.95	312+31.48	22.14 LT to 22.22 LT	5
TOTAL			337

REVISION USED	DATE	BY
XXX	XX/XX/XX	XXX
FIELD BOOK	XXX	
DRAWN BY	BAF	
CHECKED BY	MJH/RB	
FILE LOCATION	S:\2021\2121212121212121\21212121.DWG	
SAVE DATE	4/18/2023 14:07	
MILANO & GRUNLOH ENGINEERS, LLC 114 W. WASHINGTON AVE. PO BOX 897 EFFINGHAM, IL 62401 Phone: (217) 947-7262 (800) 677-2714 Email: mgenr@milanoandgrunloh.com Web: www.milanoandgrunloh.com Design Firm # 184-003108		
SCHEDULE OF QUANTITIES PROPOSED SAFE ROUTES TO SCHOOL 22-00048-00-SW GREENVILLE, ILLINOIS		
SHEET # 4 OF 15		
JOB # 21212BG4		

FAU RTE.	SECTION	COUNTY	TOTAL SHEETS	SHEET NO.
N/A	22-00048-00-SW	BOND	15	5
ILLINOIS PROJECT 9P29(946)		CONTRACT NO. 97805		

STATION	OFFSET	COMBINATION CURB AND GUTTER REMOVAL	SIDEWALK REMOVAL	DRIVEWAY PAVEMENT REMOVAL
		FOOT	SQ FT	SQ YD
Sta. 100+36.14 to Sta. 102+64.72	14.75 LT to 21.03 LT		900	
Sta. 102+52.46 to 103+26.91	14.57 LT to 16.76 LT	40		
Sta. 103+76.14 to Sta. 103+90.71	18.15 LT to 18.05 LT			9
Sta. 104+48.23 to Sta. 104+72.52	18.43 LT to 18.52 LT			23
Sta. 105+28.91 to Sta. 105+47.65	18.71 LT to 18.75 LT			21
Sta. 105+64.14 to Sta. 105+77.19	18.64 LT to 18.62 LT			12
Sta. 105+91.31 to Sta. 106+06.32	16.33 LT to 16.20 LT	15		
Sta. 106+80.81 to Sta. 106+99.60	17.91 LT to 18.44 LT			23
Sta. 107+13.64 to Sta. 107+35.69	18.63 LT to 19.01 LT			23
Sta. 107+74.50 to Sta. 107+92.83	18.95 LT to 18.61 LT			25
Sta. 109+02.83 to Sta. 200+44.26	15.84 LT to 12.64 LT	33		
Sta. 200+84.91 to Sta. 201+10.90	14.09 LT to 14.17 LT			16
Sta. 201+18.19 to Sta. 201+38.23	14.33 LT to 14.24 LT			13
Sta. 202+07.07 to Sta. 202+09.67	19.37 LT to 27.25 LT	10		
Sta. 202+25.77 to Sta. 202+45.17	20.69 LT to 12.41 LT	21		
Sta. 202+78.79 to Sta. 203+01.39	14.13 LT to 14.20 LT			25
Sta. 204+30.14 to Sta. 204+48.08	14.27 LT to 14.21 LT			20
Sta. 205+02.27 to Sta. 205+23.88	14.10 LT to 14.02 LT			32
Sta. 205+30.12 to Sta. 205+53.78	14.11 LT to 14.06 LT			27
Sta. 206+01+00 to Sta. 206+25.95	14.16 LT to 14.13 LT			34
Sta. 207+12.54 to Sta. 207+31.14	14.09 LT to 14.07 LT			22
Sta. 207+88.29 to Sta. 208+08.23	14.00 LT to 14.08 LT			31
Sta. 208+18.12 to Sta. 208+42.84	13.94 LT to 14.05 LT			42
Sta. 209+32.06 to Sta. 209+49.87	13.95 LT to 14.17 LT			22
Sta. 210+12.50 to Sta. 210+31.34	14.18 LT to 14.17 LT			32
Sta. 210+64.14 to Sta. 210+84.40	14.00 LT to 13.84 LT			18
Sta. 211+51.58 to Sta. 211+72.24	11.97 LT to 21.90 LT	26		
Sta. 300+15.55 to Sta. 300+33.36	32.81 RT to 14.27 RT	28		
Sta. 300+59.10 to Sta. 300+78.81	15.84 RT to 16.57 RT			25
Sta. 301+26.00 to Sta. 301+37.43	16.89 RT to 16.93 RT			8
Sta. 301+90.15 to Sta. 302+04.53	16.79 RT to 16.81 RT			19
Sta. 302+56.87 to Sta. 302+81.45	16.24 RT to 16.38 RT			14
Sta. 304+14.01 to Sta. 304+38.89	15.67 RT to 16.06 RT			27
Sta. 304+83.48 to Sta. 304+99.16	15.59 RT to 15.31 RT			18
Sta. 305+12.01 to Sta. 305+14.90	15.59 RT to 15.63 RT		23	
Sta. 306+00.05 to Sta. 306+03.41	15.83 RT to 15.73 RT		27	
Sta. 306+48.26 to Sta. 306+66.74	13.52 RT to 15.99 RT	19		
Sta. 306+51.20 to Sta. 307+73.42	15.32 LT to 13.77 LT	91		
Sta. 307+73.42 to Sta. 307+95.71	15.83 LT to 15.94 LT			13
Sta. 308+59.04 to Sta. 308+81.27	15.86 LT to 15.83 LT			27
Sta. 309+36.24 to Sta. 309+56.05	16.15 LT to 16.04 LT			21
Sta. 310+18.01 to Sta. 310+38.11	15.92 LT to 15.92 LT			25
Sta. 310+99.83 to Sta. 311+16.49	15.83 LT to 15.79 LT			24
Sta. 311+79.29 to Sta. 311+96.37	16.15 LT to 16.12 LT			25
Sta. 312+21.94 to Sta. 312+31.51	16.13 LT to 16.22 LT			12
TOTAL		283	950	728

STATION	OFFSET	DOMESTIC METER VAULTS TO BE ADJUSTED	WATER VALVES TO BE ADJUSTED	INLETS TO BE ADJUSTED	RELOCATE SIGN PANEL ASSEMBLY - TYPE A	CLEANOUT TO BE ADJUSTED
		EACH	EACH	EACH	EACH	EACH
Sta. 102+10.08	21.95 LT				1	
Sta. 103+09.56	20.58 LT				1	
Sta. 103+29.41	19.72 LT					1
Sta. 104+24.79	20.21 LT					1
Sta. 104+35.79	24.29 LT	1				
Sta. 104+97.61	20.69 LT					1
Sta. 105+18.27	26.70 LT	1				
Sta. 105+64.28	25.04 LT					1
Sta. 106+48.66	18.57 LT					1
Sta. 107+10.59	20.68 LT					1
Sta. 107+30.25	28.90 LT	1				
Sta. 200+46.16	18.23 LT				1	
Sta. 201+74.73	18.23 LT	1				
Sta. 202+03.28	22.88 LT	1				
Sta. 203+10.79	17.25 LT	1				
Sta. 204+53.58	18.29 LT	1				
Sta. 206+01.50	18.26 LT	1				
Sta. 206+88.08	18.43 LT	1				
Sta. 207+37.36	18.94 LT		1			
Sta. 207+43.68	17.78 LT	1				
Sta. 208+52.66	18.71 LT	1				
Sta. 209+11.81	19.19 LT	1				
Sta. 210+04.09	19.65 LT	1				
Sta. 210+43.18	16.89 LT				1	
Sta. 210+54.90	19.46 LT		1			
Sta. 210+89.95	17.41 LT	1				
Sta. 211+53.60	17.86 LT		1			
Sta. 300+23.18	17.94 RT			1		
Sta. 300+90.34	18.60 RT				1	
Sta. 301+55.54	22.32 RT	1				
Sta. 307+54.22	17.97 LT				1	
Sta. 309+21.23	20.31 LT	1				
Sta. 310+37.78	19.16 LT					1
Sta. 310+96.21	19.19 LT	1				
Sta. 312+00.09	21.53 LT	1				
TOTAL		18	3	1	6	7

STATION	OFFSET	TREE REMOVAL (OVER 15 UNITS DIAMETER)	SHRUB REMOVAL	REMOVE AND RELOCATE FLAGPOLE	FENCE REMOVAL	CONCRETE RETAINING WALL REMOVAL
		UNITS	EACH	EACH	FOOT	FOOT
Sta. 107+04.03 to Sta. 107+12.41	19.43 LT to 19.79 LT					16
Sta. 107+62.46 to Sta. 107+70.79	20.52 LT to 20.54 LT					16
Sta. 107+99.13	26.43 LT	30				
Sta. 109+04.02	23.36 LT		1			
Sta. 206+40.27	21.84 LT	36				
Sta. 209+71.67 to Sta. 210+04.40	22.60 LT to 22.21 LT				35	
Sta. 303+55.70 to Sta. 303+74.0	19.9 RT				20	
Sta. 303+57.32	21.05 RT			1		
Sta. 305+96.53	19.00 RT	24				
Sta. 311+18.43	22.60 LT		1			
TOTAL		90	2	1	55	32

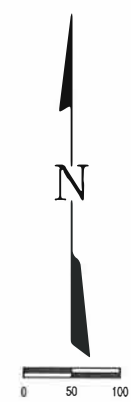
REVISION ISSUED	DATE	BY
XXX	XX/XX/XX	XXX
FIELD BOOK	XXX	
DRAWN BY	BAF	
CHECKED BY	MJLRB	
FILE LOCATION	S:\2021\21212B\21212B\DWG\TITLE.DWG	
SAVE DATE	4/18/2023 14:07	
MILANO & GRUNLOH ENGINEERS, LLC 114 W. WASHINGTON AVE. PO BOX 897 EFFINGHAM, IL 62401 Phone: (217) 347-2621 (800) 677-2714 Email: mgen@milanoandgrunloh.com Web: www.mgen.com Design Firm # 184-003108		
SCHEDULE OF QUANTITIES REMOVED	SAFE ROUTES TO SCHOOL 22-00048-00-SW GREENVILLE, ILLINOIS	
SHEET #	5 OF 15	
JOB #	21212BG4	

FAU RTE.	SECTION	COUNTY	TOTAL SHEETS	SHEET NO.
NA	22-00046-00-SW	BOND	15	7
ILLINOIS PROJECT 9P29(946)		CONTRACT NO. 97805		



Point #	Elevation	Northing	Easting	Description
1	591.80	813325.76	2516808.62	IP
2	578.31	813311.17	2516307.29	IP
3	579.68	813354.74	2516312.28	BM1
4	576.17	813139.06	2516173.81	NAIL AND WHISKER
5	573.47	813144.31	2515917.10	IP
6	572.46	813183.94	2515576.33	IP
7	580.48	812801.69	2516178.18	BM2
8	578.48	812709.59	2516180.96	NAIL AND WHISKER
9	582.15	812536.53	2516224.55	IP
10	592.93	812544.51	2516655.88	IP

BM#	ELEVATION	DESCRIPTION
BM 1	579.68	TOP NE BOLT ON FIRE HYDRANT
BM 2	580.48	TOP BOLT @ TIP OF OPEN ARROW ON FIRE HYDRANT

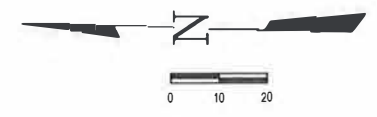
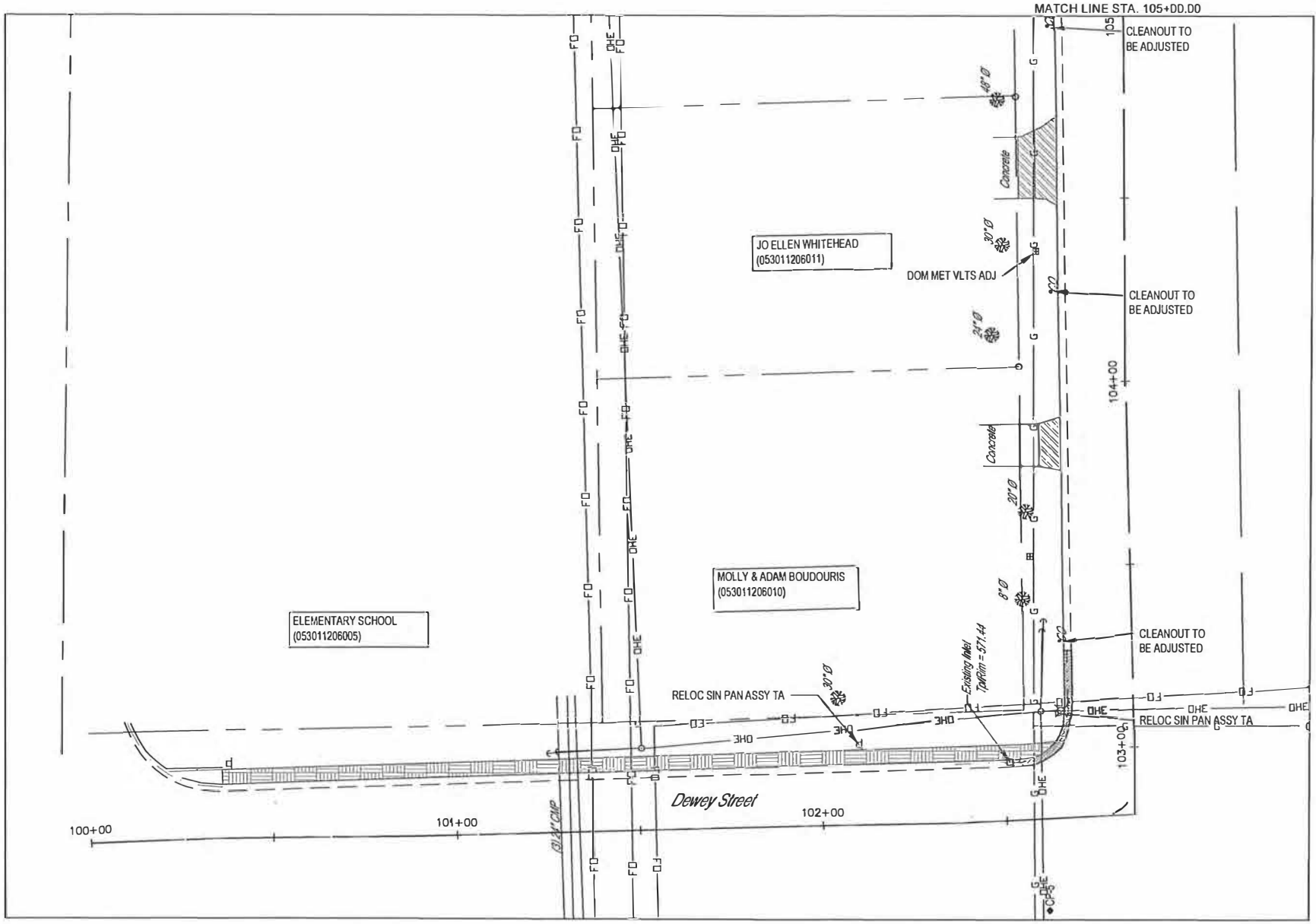


BY	DATE	REVISION	ISSUED
XXX	XXXXXX	XXX	XXX
FIELD BOOK	XXX	DRAWN BY	BAF
CHECKED BY	MJH/ERB	FILE LOCATION	S:\2021\2128G4\BENCHMKTLE.DWG
SAVE DATE	3/29/2023 10:48	MILANO & GRUNLOH ENGINEERS, LLC 114 W. WASHINGTON AVE. PO BOX 887 EFFINGHAM, IL 62401 Phone: (217) 947-7262 (800) 677-2714 Email: mgeengineers@mgeengineers.com Web: www.mgeengineers.com Design Firm #164-000108	
BENCHMARK AND ALIGNMENT SHEET	SAFE ROUTES TO SCHOOL 22-00046-00-SW GREENVILLE, ILLINOIS		
SHEET #	7 OF 15		
JOB #	212128G4		



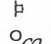
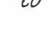

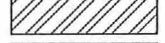


FAU RTE.	SECTION	COUNTY	TOTAL SHEETS	SHEET NO.
NA	22-00046-00-SW	BOND	15	8
ILLINOIS PROJECT 9P29(946)		CONTRACT NO. 97805		

NOTE: SAWCUT (FULL DEPTH) @ ALL CURB & GUTTER, SIDEWALK, & PAVEMENT REMOVAL LOCATIONS.

BY	DATE	REVISION ISSUED
XXX	XX/XX/XXXX	XXX



LEGEND

-  TREE (DECIDUOUS)
-  TREE REMOVAL
-  FIRE HYDRANT
-  SIGN
-  CLEANOUT
-  DRIVEWAY PAVEMENT REMOVAL
-  CURB & GUTTER REMOVAL
-  4\"/>

FIELD BOOK	XXX
DRAWN BY	BAF
CHECKED BY	MJL/RB
FILE LOCATION	S:\2021\21212BCH\CHG\REMOVAL SHEET.DWG
SAVE DATE	3/29/2023 09:29

MILANO & GRUNLOH ENGINEERS, LLC
 114 W. WASHINGTON AVE. | PO BOX 887
 EFFINGHAM, IL 62401
 Phone: (217) 947-7262 | (800) 677-2714
 Email: mgenr@mgengineers.com
 Web: www.mgengineers.com
 Design Firm #184-003108

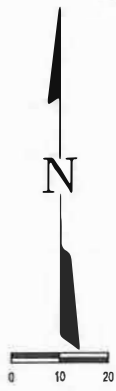
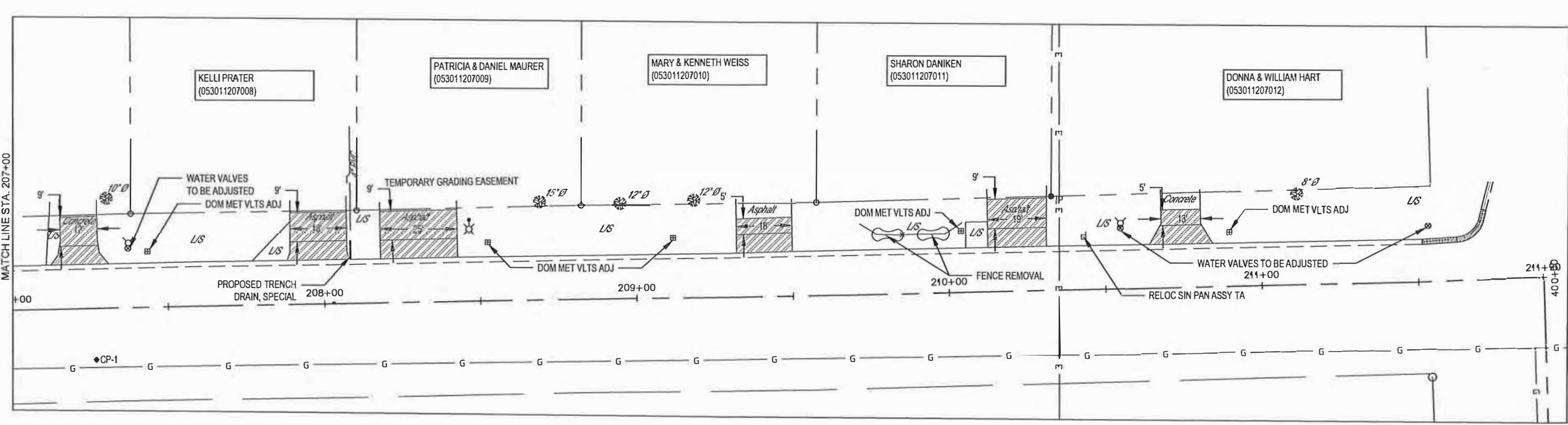
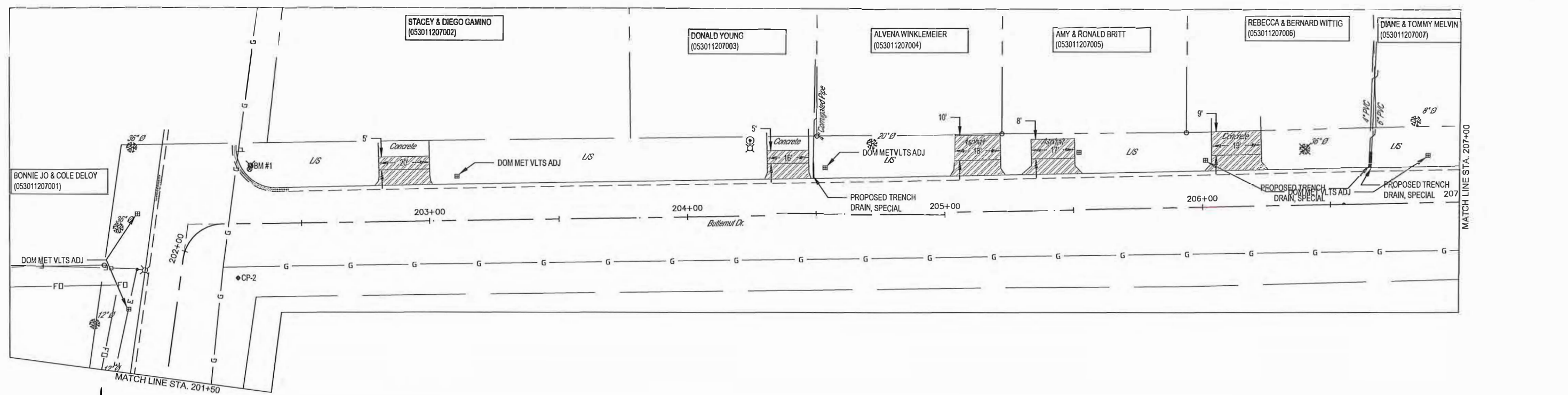


REMOVAL SHEET STA. 100+00 to 105+00
 SAFE ROUTES TO SCHOOL
 22-00046-00-SW
 GREENVILLE, ILLINOIS

SHEET #
 8 OF 15
 JOB #
 21212BG4

FAU RTE.	SECTION	COUNTY	TOTAL SHEETS	SHEET NO.
N/A	22-00046-00-SW	BOND	15	10
ILLINOIS PROJECT #P25(946)		CONTRACT NO. 97605		

NOTE: SAWCUT (FULL DEPTH) @ ALL CURB & GUTTER, SIDEWALK, & PAVEMENT REMOVAL LOCATIONS.



LEGEND

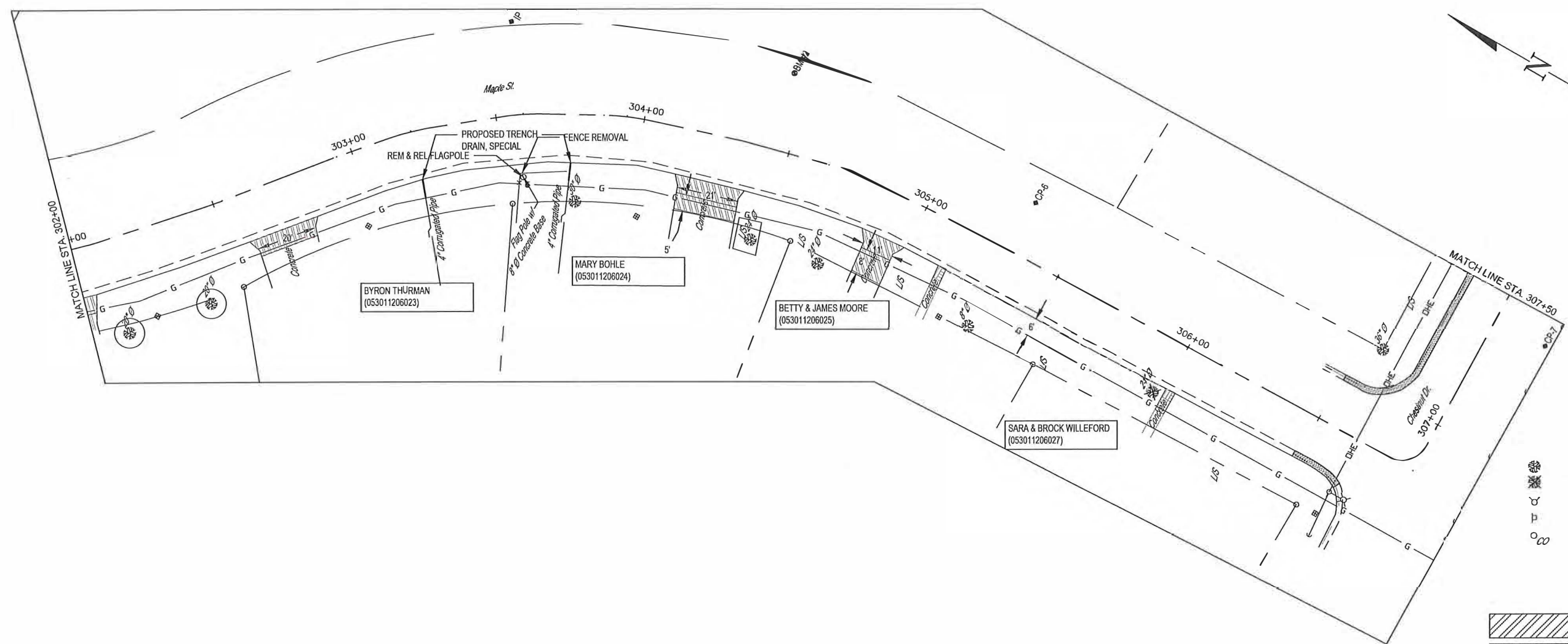
- TREE (DECIDUOUS)
- TREE REMOVAL
- FIRE HYDRANT
- SIGN
- CLEANOUT

- DRIVEWAY PAVEMENT REMOVAL
- CURB & GUTTER REMOVAL
- 4" SIDEWALK REMOVAL

REVISION	DATE	BY	APP. BY	REASON
1	10/20/23	XXX	XXX	ISSUED FOR PERMITS
<p>MILANO & GRUNLOH ENGINEERS, LLC 114 W. WASHINGTON AVE. PO BOX 897 EFFINGHAM, IL 62401 Phone: (217) 347-7282 (800) 677-2714 Email: mgen@engr.com Web: www.mgen.com Design Firm #184-03108</p>				
FIELD BOOK	DRAWN BY	CHECKED BY	FILE LOCATION	SAVE DATE
XXX	B/F	M/L/RB	S:\2021\212BG4\DWG\REMOVAL SHEET.DWG	3/29/2023 09:29
<p>REMOVAL SHEET STA. 201+50 to 211+00</p> <p>SAFE ROUTES TO SCHOOL 22-00046-00-SW GREENVILLE, ILLINOIS</p>				
<p>SHEET # 10 OF 15</p> <p>JOB # 21212BG4</p>				

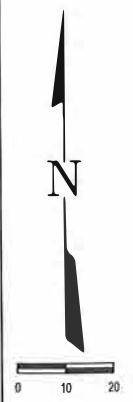
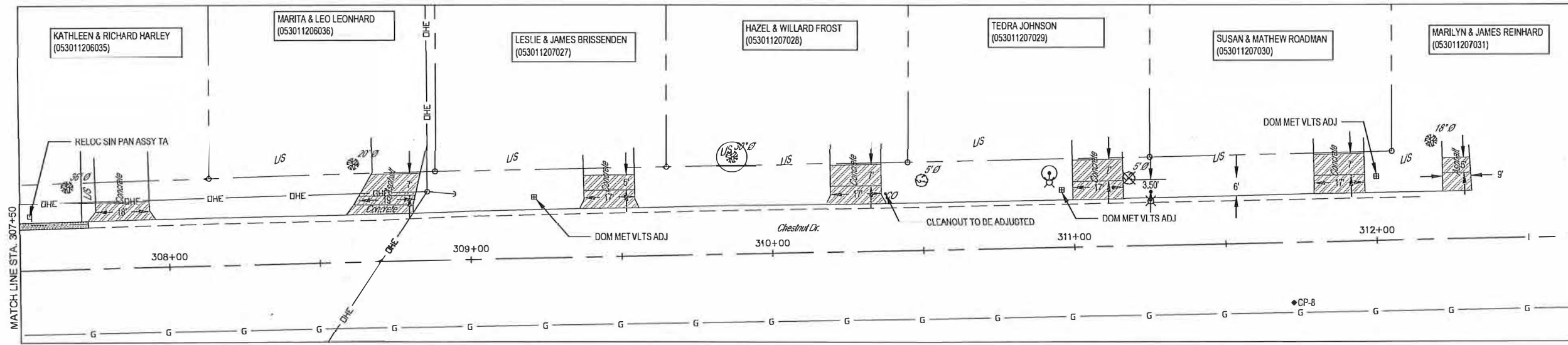
FAU RTE.	SECTION	COUNTY	TOTAL SHEETS	SHEET NO.
NA	22-00048-00-SW	BOND	15	11
ILLINOIS PROJECT 9P29(946)		CONTRACT NO. 97805		

NOTE: SAWCUT (FULL DEPTH) @ ALL CURB & GUTTER, SIDEWALK, & PAVEMENT REMOVAL LOCATIONS.



LEGEND

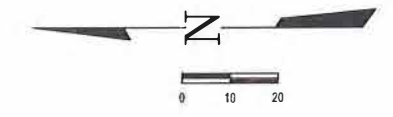
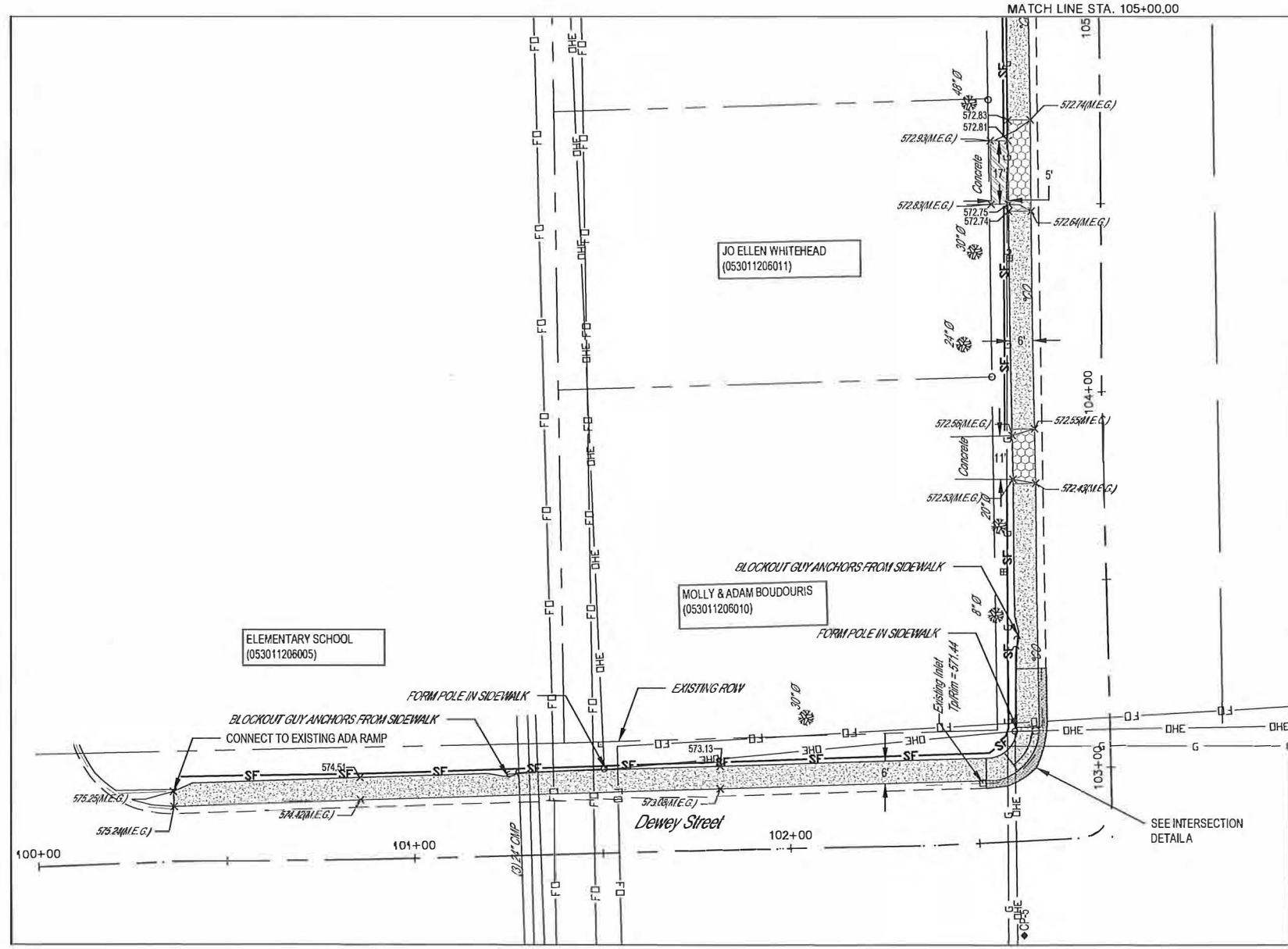
- TREE (DECIDUOUS)
- TREE REMOVAL
- FIRE HYDRANT
- SIGN
- CLEANOUT
- DRIVEWAY PAVEMENT REMOVAL
- CURB & GUTTER REMOVAL
- 4" SIDEWALK REMOVAL



	REVISION	DATE	BY	XXX	XXX
FIELD BOOK	XXX				
DRAWN BY	BAF				
CHECKED BY	MJ-LRB				
FILE LOCATION	S:\2021\12\28\64\DWG\RENOVAL SHEET.DWG				
SAVE DATE	3/29/2023 09:29				
MILANO & GRUNLOH ENGINEERS, LLC 114 W. WASHINGTON AVE. PO BOX 897 EFFINGHAM, IL 62401 Phone: (217) 347-7282 (800) 677-2714 Email: mgenr@milanoengineers.com Web: www.mgenr.com Design Firm # 18-003108					
REMOVAL SHEET STA. 302+00 to 312+33					
SAFE ROUTES TO SCHOOL 22-00048-00-SW GREENVILLE, ILLINOIS					
SHEET # 11 OF 15					
JOB # 21212BG4					

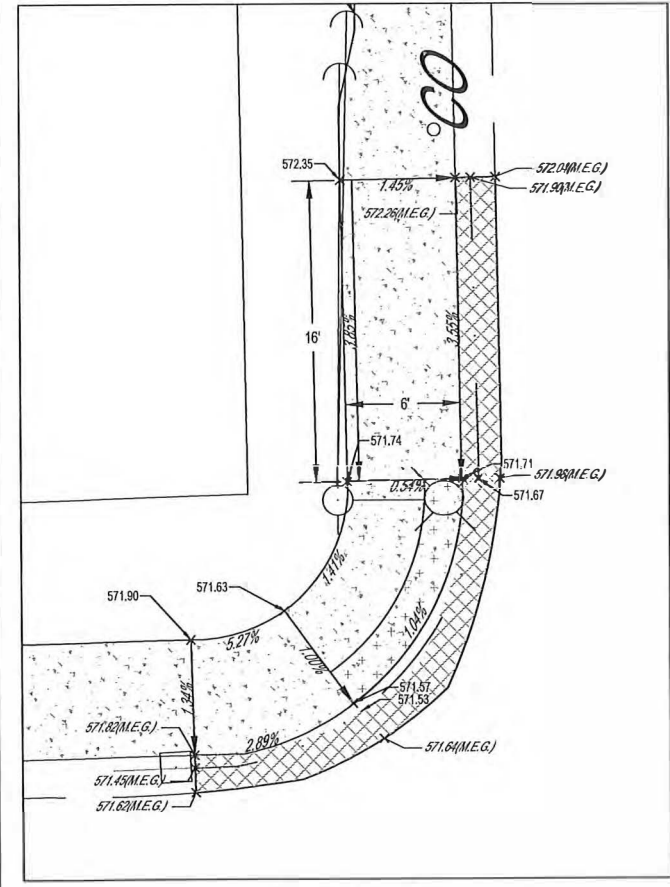
FAU RTE.	SECTION	COUNTY	TOTAL SHEETS	SHEET NO.
N/A	22-0048-00-SW	BOND	15	12
ILLINOIS PROJECT 9P29(946)		CONTRACT NO. 97805		

BY	DATE	REVISION ISSUED
XXX	XX/XX/XXXX	XXX



LEGEND

- TREE (DECIDUOUS)
- FIRE HYDRANT
- SIGN
- SLOPE AS SHOWN
- CLEANOUT
- WATER METER
- PROPOSED ADA DETECTABLE WARNING PANEL
- PROPOSED 4" PCC SIDEWALK
- PROPOSED 6" PCC SIDEWALK
- PROPOSED 6" ASPHALT PAVEMENT
- PROPOSED 6" PCC PAVEMENT
- PROPOSED CURB & GUTTER



KILLARNEY DR & DEWEY ST
INTERSECTION DETAIL A

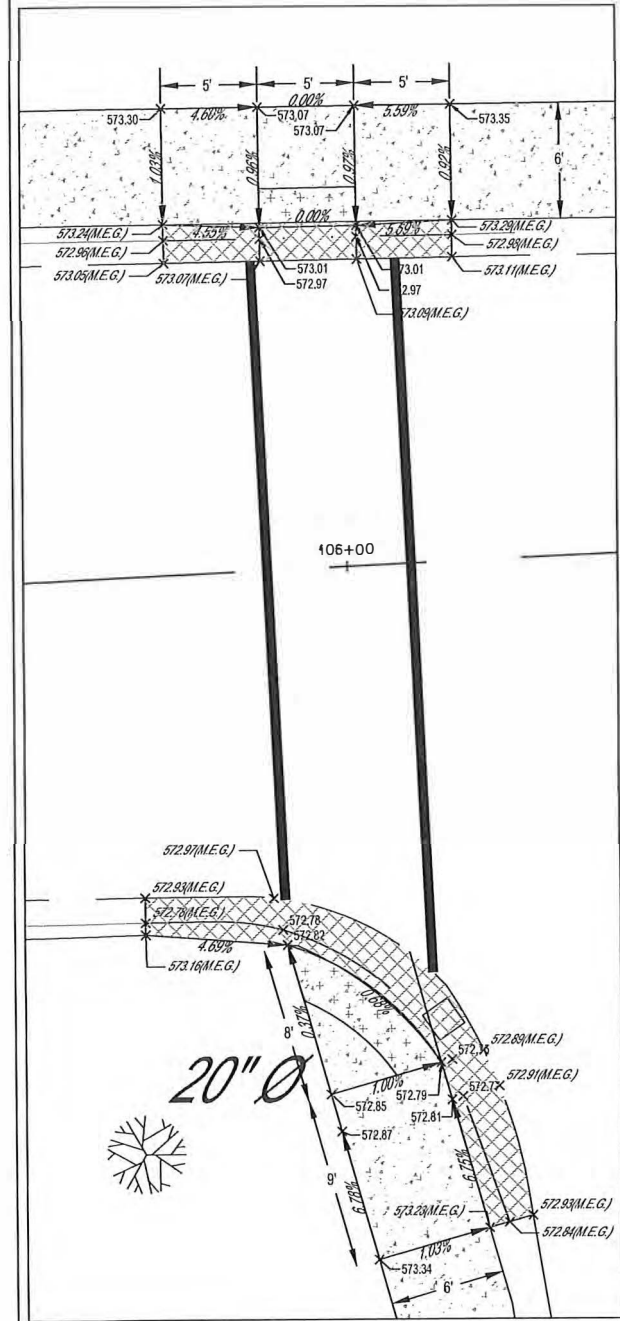
NOTE: PROPOSED CURB SHALL BE FLUSH WITH PROPOSED SIDEWALK.

MILANO & GRUNLOH ENGINEERS, LLC
 114 W. WASHINGTON AVE. | PO BOX 897
 EFFINGHAM, IL 62401
 Phone: (217) 347-7262 | (800) 677-2714
 Email: mgeengineers@mgeengineers.com
 Web: www.mgeengineers.com
 Design Firm #164-003108

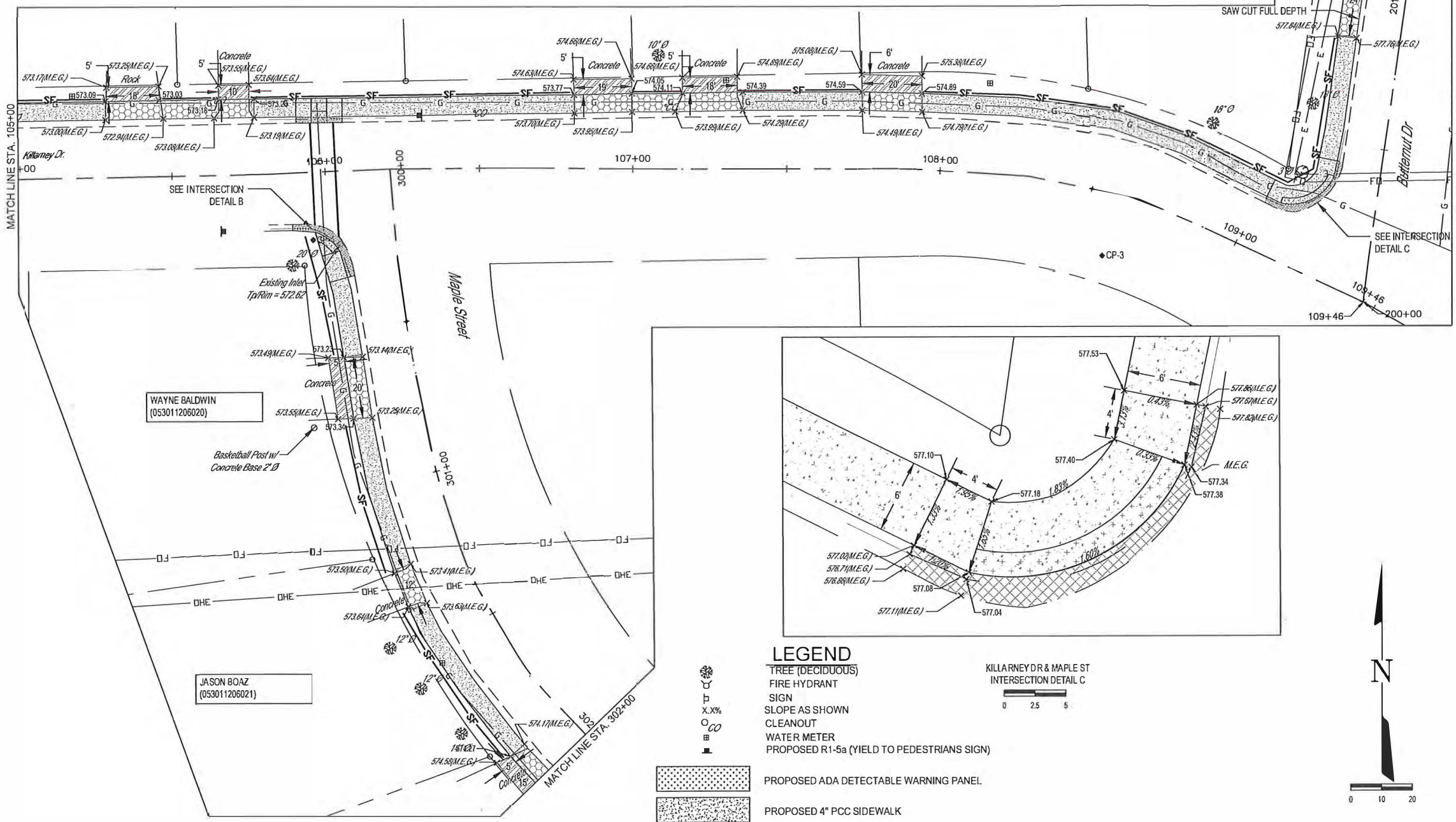
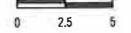


SIDEWALK PLAN STA. 100+00 to 105+00
 SAFE ROUTES TO SCHOOL
 22-0048-00-SW
 GREENVILLE, ILLINOIS

FAU RTE.	SECTION	COUNTY	TOTAL SHEETS	SHEET NO.
NA	22-00046-00-SW	BOND	15	13
ILLINOIS PROJECT 9P29(946)			CONTRACT NO. 97805	



KILLARNEY DR & MAPLE ST
INTERSECTION DETAIL B



MATCH LINE STA. 105+00

MATCH LINE 201+50

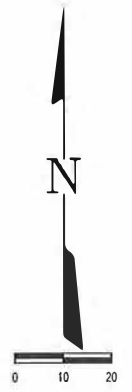
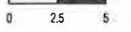
WAYNE BALDWIN
(053011206020)

JASON BOAZ
(053011206021)

LEGEND

- TREE (DECIDUOUS)
- FIRE HYDRANT
- SIGN
- SLOPE AS SHOWN
- CLEANOUT
- WATER METER
- PROPOSED R1-5a (YIELD TO PEDESTRIANS SIGN)
- PROPOSED ADA DETECTABLE WARNING PANEL
- PROPOSED 4" PCC SIDEWALK
- PROPOSED 6" PCC SIDEWALK
- PROPOSED 6" ASPHALT PAVEMENT
- PROPOSED 6" PCC PAVEMENT
- PROPOSED CURB & GUTTER
- AGGREGATE BASE COURSE, TYPE A

KILLARNEY DR & MAPLE ST
INTERSECTION DETAIL C



NOTE: PROPOSED CURB SHALL BE FLUSH WITH PROPOSED SIDEWALK.

DATE	REVISION	ISSUED
XXX	BAF	1/24/2023

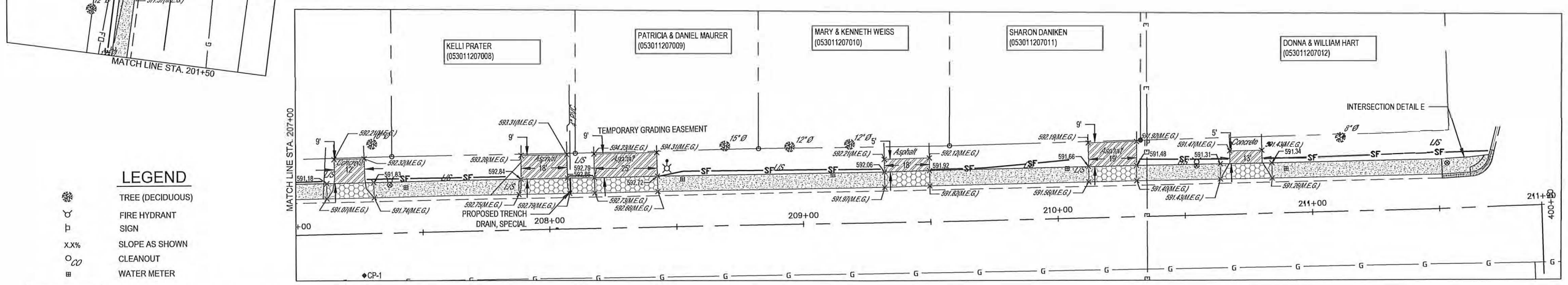
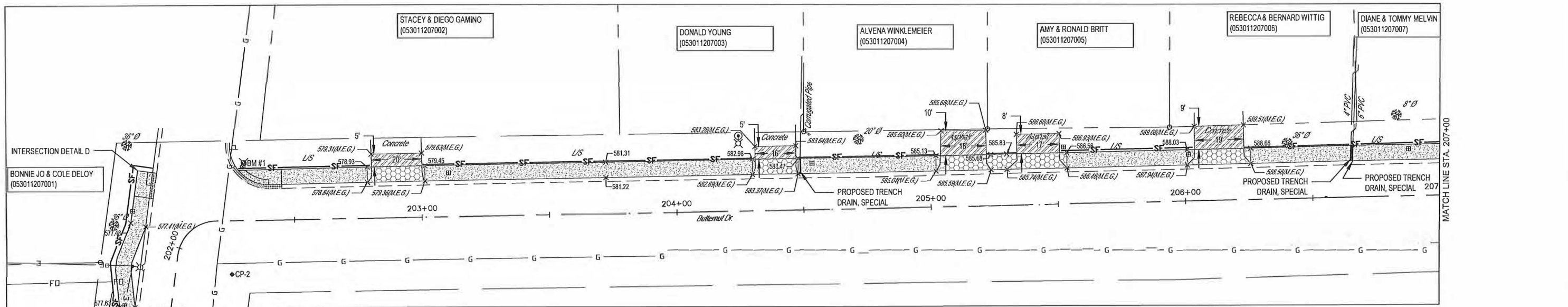
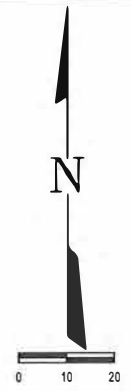
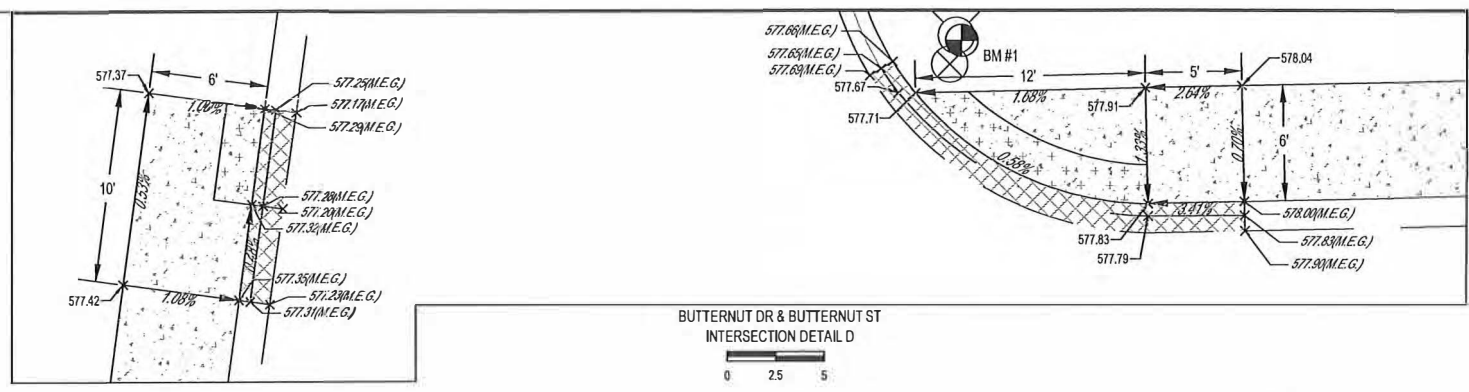
FIELD BOOK	XXX
DRAWN BY	BAF
CHECKED BY	MJL/LRB
FILE LOCATION	S:\2022\121222\2204\DWG\SIDEWALK.DWG
SAVE DATE	3/29/2023 10:20

MILANO & GRUNLOH ENGINEERS, LLC
 114 W. WASHINGTON AVE. | PO BOX 897
 EFFINGHAM, IL 62401
 Phone: (217) 347-7262 | (800) 677-2714
 Email: mgenr@engrml.com
 Web: www.mgenr.com
 Design Firm # 164-003108

SIDEWALK PLAN STA. 105+00 to 109+46	
SIDEWALK PLAN STA. 300+00 to 302+00	
SIDEWALK PLAN STA. 200+00 to 201+50	
SAFE ROUTES TO SCHOOL	
22-00046-00-SW	
GREENVILLE, ILLINOIS	

SHEET #	13 OF 15
JOB #	21212BG4

FAURTE.	SECTION	COUNTY	TOTAL SHEETS	SHEET NO.
NA	22-00046-00-SW	BOND	15	14
ILLINOIS PROJECT			SP29(946)	CONTRACT NO. 07905

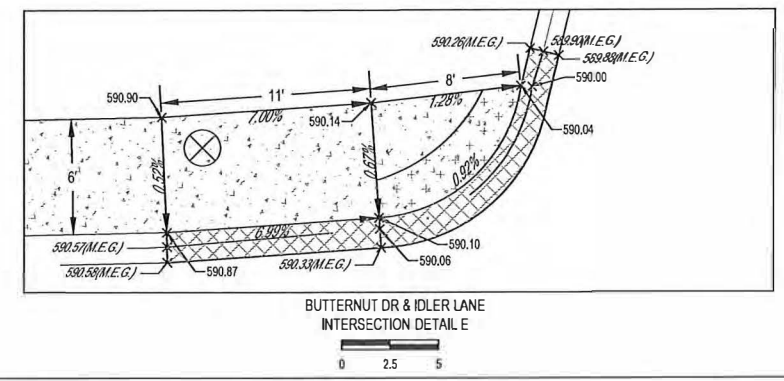


LEGEND

- TREE (DECIDUOUS)
- FIRE HYDRANT
- SIGN
- SLOPE AS SHOWN
- CLEANOUT
- WATER METER

- PROPOSED ADA DETECTABLE WARNING PANEL
- PROPOSED 4" PCC SIDEWALK
- PROPOSED 6" PCC SIDEWALK
- PROPOSED 6" ASPHALT PAVEMENT
- PROPOSED 6" PCC PAVEMENT
- PROPOSED CURB & GUTTER

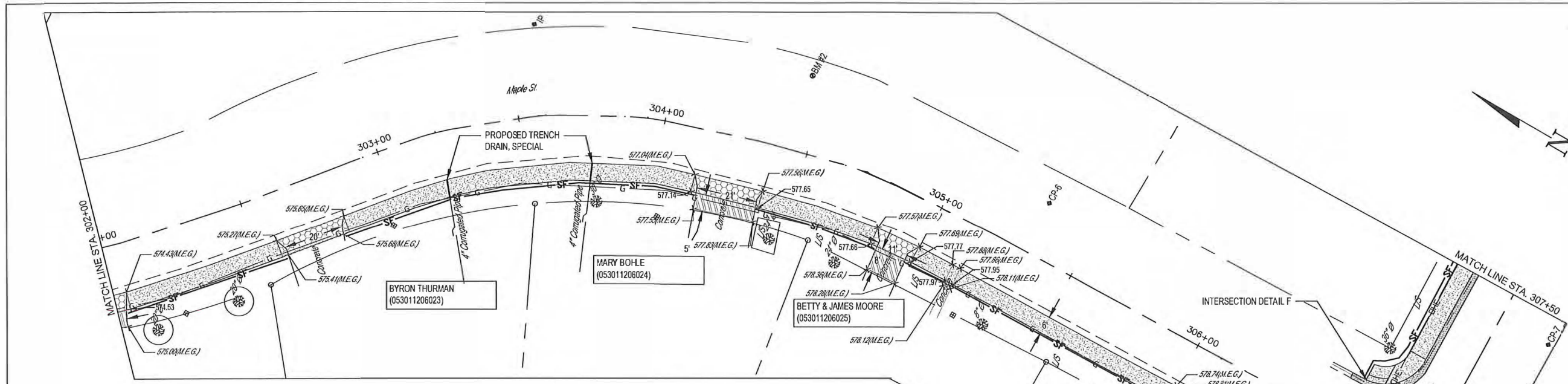
NOTE: PROPOSED CURB SHALL BE FLUSH WITH PROPOSED SIDEWALK.



FIELD BOOK XXX	DRAWN BY BAF	CHECKED BY MAHLRB	FILE LOCATION S:\2021\212126\DWG\SIDEWALK.DWG	SAVE DATE 3/29/2023 10:20
MILANO & GRUNLOH ENGINEERS, LLC 114 W. WASHINGTON AVE. PO BOX 887 EFFINGHAM, IL 62401 Phone: (217) 947-7982 (800) 677-2714 Email: mgeengineers@mgeengineers.com Web: www.mgeengineers.com Design Firm #164-005108				
SIDEWALK PLANS STA. 201+50 to 211+90 SAFE ROUTES TO SCHOOL 22-00046-00-SW GREENVILLE, ILLINOIS				
SHEET # 14 OF 15 JOB # 21212BG4				

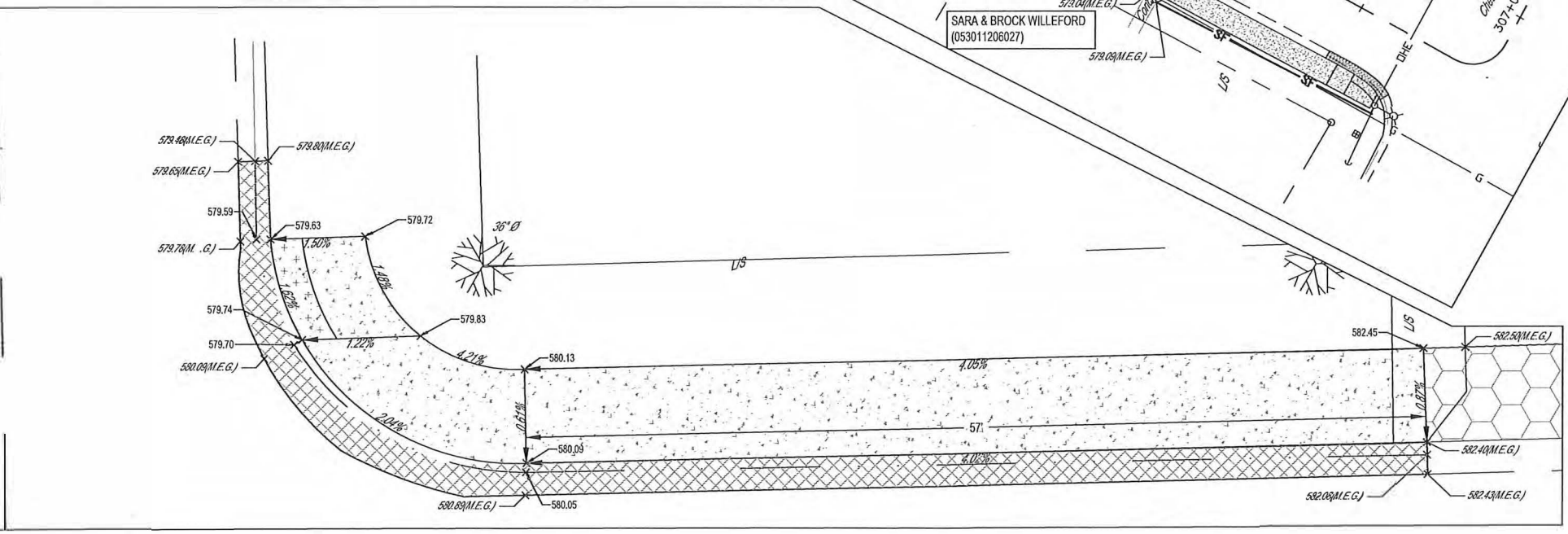
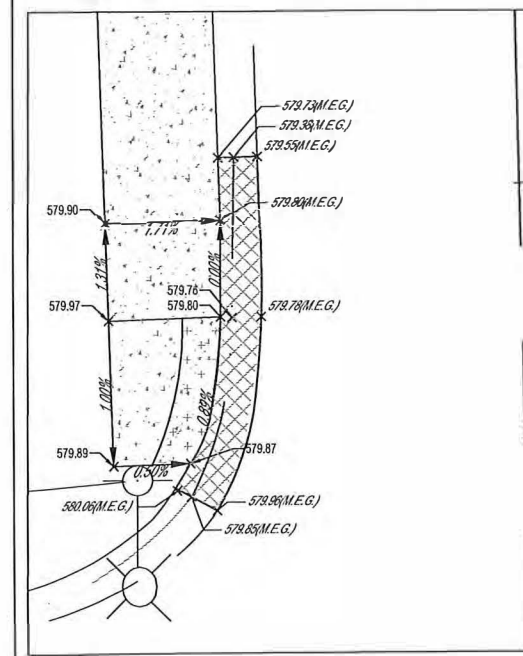
FAU RTE.	SECTION	COUNTY	TOTAL SHEETS	SHEET NO.
NA	22-0048-00-SW	BOND	15	15
ILLINOIS PROJECT 9P29(946)		CONTRACT NO. 97805		

BY	DATE	REVISION	ISSUED
XXX	XX/XX/XXXX		BAR



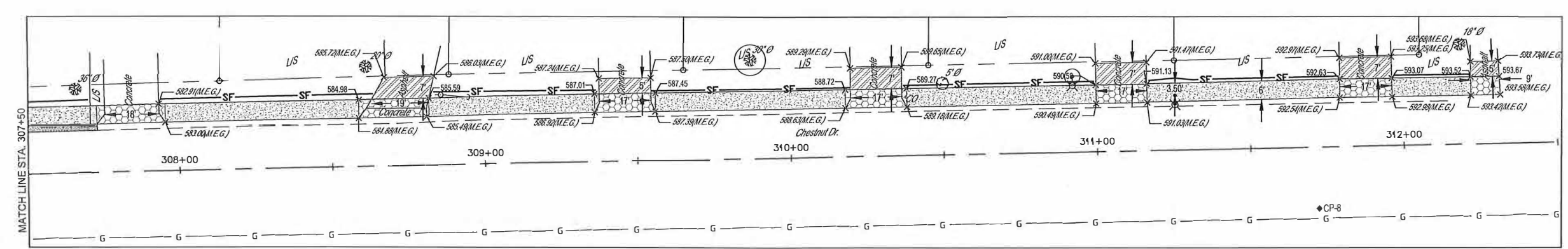
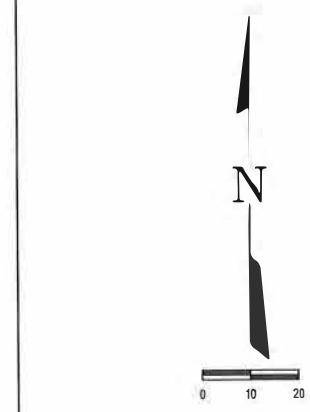
LEGEND

- TREE (DECIDUOUS)
- FIRE HYDRANT
- SIGN
- X.X% SLOPE AS SHOWN
- CLEANOUT
- WATER METER
- PROPOSED ADA DETECTABLE WARNING PANEL
- PROPOSED 4\"/> PROPOSED 6\"/> PROPOSED 6\"/> PROPOSED 6\"/> PROPOSED 6\"/> PROPOSED 6\"/> PROPOSED CURB & GUTTER



CHESTNUT DR & MAPLE ST
INTERSECTION DETAIL F

NOTE: PROPOSED CURB SHALL BE FLUSH WITH PROPOSED SIDEWALK.



MILANO & GRUNLOH ENGINEERS, LLC
114 W. WASHINGTON AVE. | PO BOX 897
EFFINGHAM, IL 62401
Phone: (217) 347-7262 | (800) 677-2714
Email: mgeengineers@mgeengineers.com
Web: www.mgeengineers.com
Design Firm # 164-003108