

STATE OF ILLINOIS
DEPARTMENT OF TRANSPORTATION

F.A.S. RTE	SECTION	COUNTY	TOTAL SHEETS	SHEET NO.
944	138D(I-10)	ALEXANDER	16	1
		ILLINOIS	CONTRACT NO. 78964	

08-04-2023 LETTING ITEM 085

FOR INDEX OF SHEETS, SEE SHEET NO. 3
FOR SUMMARY OF QUANTITIES, SEE SHEET NO. 4-5

PROPOSED HIGHWAY PLANS

FAS ROUTE 944 (US 60 & 62) OVER MISSISSIPPI RIVER
SECTION 138D(I-10)
PROJECT HBFP-XFA2(979)
NAVIGATION LIGHT UPGRADE
ALEXANDER COUNTY IL /MISSISSIPPI COUNTY MO

C-99-079-22

TRAFFIC DATA

FAS 944 (US 60 & 62)
2020 ADT = 2780
26.1% TRUCKS

TOWNSHIPS

CAIRO

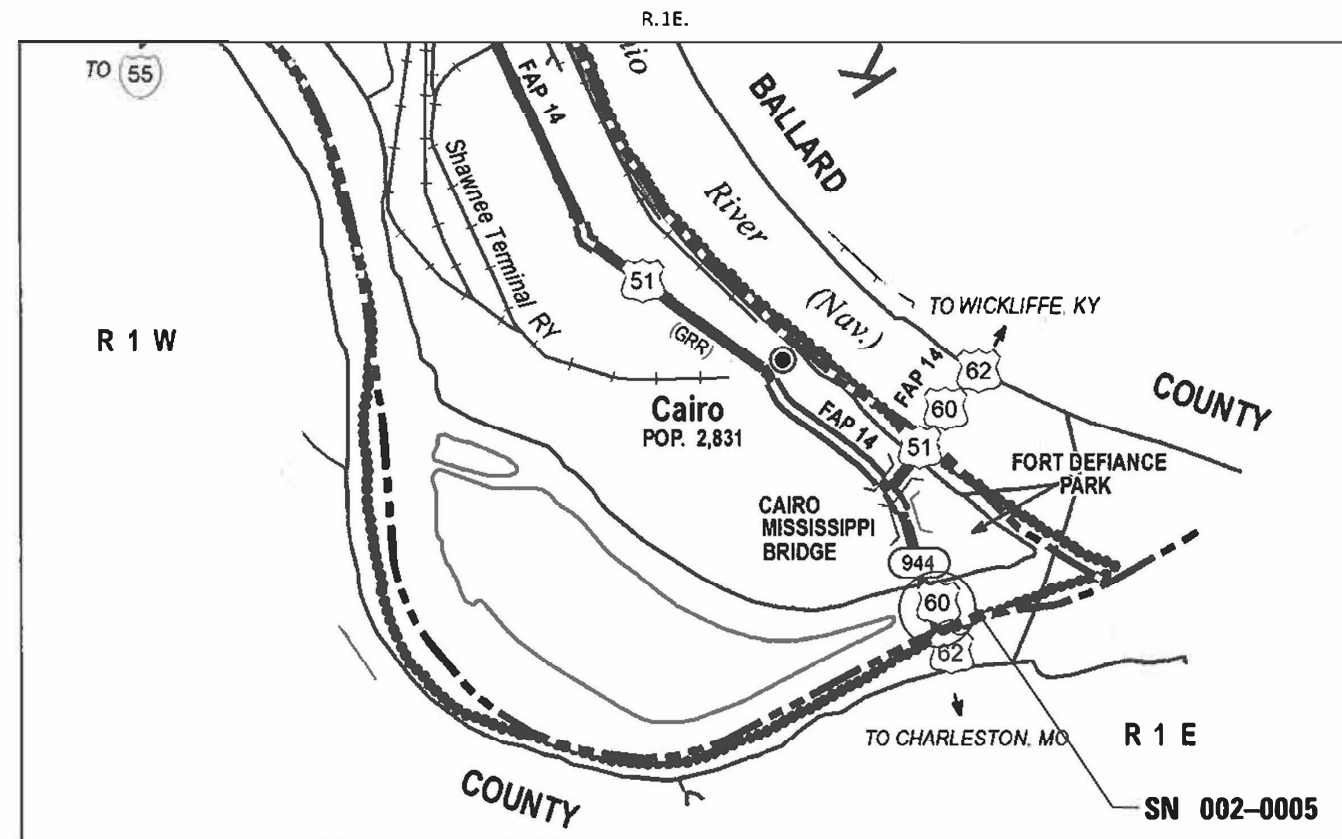
POSTED SPEED : 55 MPH

T.185

J.U.L.I.E.
JOINT UTILITY LOCATION INFORMATION FOR EXCAVATION
1-800-892-0123
OR 811

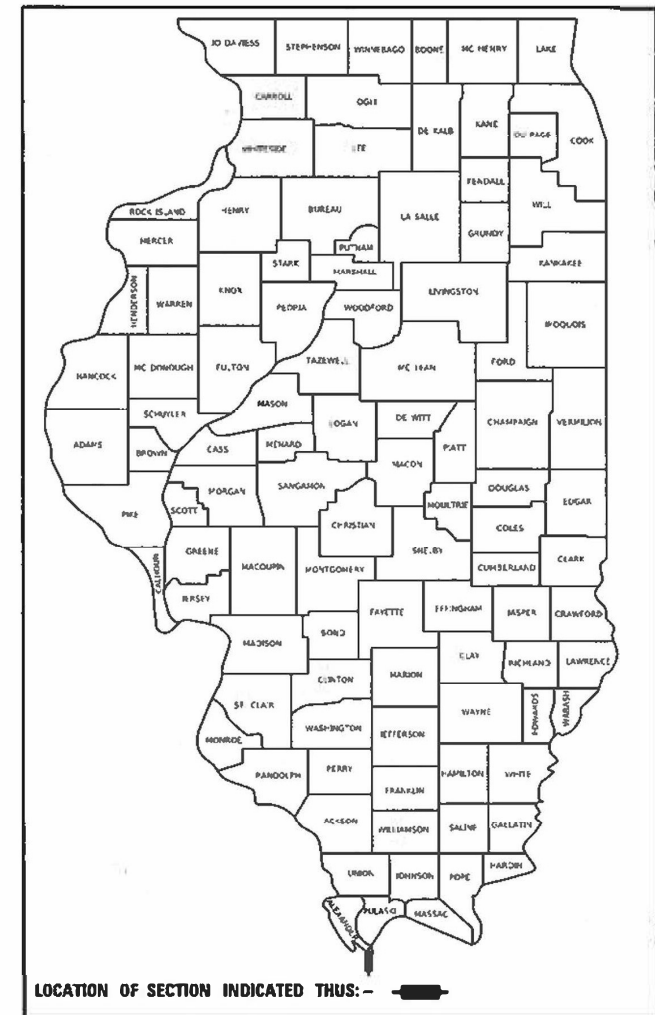
PROJECT ENGINEER: GRANT DETERDING

CONTRACT NO. 78964



GROSS LENGTH = 5181.4 FT.,

D-99-059-22



LOCATION OF SECTION INDICATED THUS: -

STATE OF ILLINOIS
DEPARTMENT OF TRANSPORTATION

SUBMITTED Dec 14 20 22

Kirk H. Brown
REGION FIVE ENGINEER

May 12, 2023 [Signature]
ENGINEER OF DESIGN AND ENVIRONMENT

May 12, 2023 [Signature]
DIRECTOR OF HIGHWAYS PROJECT IMPLEMENTATION

PRINTED BY THE AUTHORITY
OF THE STATE OF ILLINOIS

LIGHTING LEGEND:

- ☒ R EXISTING CONTROLLER TO BE REMOVED.
- Ⓚ R EXISTING JUNCTION BOX TO BE REMOVED.
- EXISTING CABLE AND CONDUIT TO BE REMOVED.
- Ⓚ R EXISTING NAVIGATIONAL LIGHT TO BE REMOVED.
- ✉ PROPOSED NAVIGATION OBSTRUCTION LIGHTING CONTROLLER.
- Ⓚ PROPOSED JUNCTION BOX, SIZE AS NOTED ON PLAN.
- PROPOSED CABLE AND CONDUIT, SIZE AS NOTED ON PLAN.
- Ⓚ_R PROPOSED RED NAVIGATIONAL LIGHT, LED, 180°.
- Ⓚ_G PROPOSED GREEN NAVIGATIONAL LIGHT, LED, 360°.
- Ⓚ_W PROPOSED WHITE NAVIGATIONAL LIGHT, LED, 180°.

BILL OF MATERIALS:

ITEM DESCRIPTION	UNIT	QUANTITY
ELECTRIC SERVICE INSTALLATION	EACH	1
UNDERGROUND CONDUIT, GALVANIZED STEEL, 2" DIA.	FOOT	25
CONDUIT ATTACHED TO STRUCTURE, 3/4" DIA. STAINLESS STEEL	FOOT	80
CONDUIT ATTACHED TO STRUCTURE, 2" DIA., GALVANIZED STEEL	FOOT	3,690
JUNCTION BOX, STAINLESS STEEL, ATTACHED TO STRUCTURE, 8" X 6" X 4"	EACH	4
JUNCTION BOX, STAINLESS STEEL, ATTACHED TO STRUCTURE, 18" X 12" X 6"	EACH	6
ELECTRIC CABLE IN CONDUIT, 600V (XLP-TYPE USE) 1/C NO. 8	FOOT	4,176
ELECTRIC CABLE IN CONDUIT, 600V (XLP-TYPE USE) 1/C NO. 6	FOOT	7,584
WATERWAY OBSTRUCTION WARNING LUMINAIRE, LED	EACH	6
WATERWAY OBSTRUCTION WARNING LUMINAIRE, LED, 180 DEGREE RED	EACH	8
WATERWAY OBSTRUCTION WARNING LUMINAIRE, LED, 360 DEGREE GREEN	EACH	2
OBSTRUCTION WARNING LIGHTING CONTROLLER	EACH	1
REMOVAL OF OBSTRUCTION WARNING LIGHTING SYSTEM	L SUM	1
ACCESS LADDER	EACH	2
MAINTENANCE OF NAVIGATION LIGHTING SYSTEM	CAL MO	6

GENERAL NOTES:

1. THE CONTRACTOR SHALL STAGE THE REMOVAL OF THE EXISTING NAVIGATION LIGHTING AND THE INSTALLATION OF NEW NAVIGATION LIGHTING SO AS TO MAINTAIN CONTINUOUS OPERATION OF THE NAVIGATION LIGHTING SYSTEM.
2. THE CONTRACTOR SHALL VERIFY FIELD CONDITIONS PRIOR TO BIDDING. THERE WILL BE NO ADDITIONAL COMPENSATION PAID FOR CLAIMS THAT ARISE FROM A FAILURE TO FULLY INVESTIGATE EXISTING FIELD CONDITIONS.
3. THE CONTRACTOR SHALL FURNISH AND INSTALL FLEXIBLE LIQUID TIGHT CONDUIT AS REQUIRED FOR THE PROPOSED LIGHTING INSTALLATION. THE COST OF THE FLEXIBLE LIQUID TIGHT CONDUIT SHALL BE INCLUDED IN THE COST OF THE PROPOSED CONDUIT.
4. THE CONTRACTOR SHALL FURNISH AND INSTALL ALL ITEMS REQUIRED TO ATTACH THE CONDUITS AND JUNCTION BOXES TO THE STRUCTURE, INCLUDING, BUT NOT LIMITED TO UNI-STRUT, BRACKETS, FLEXIBLE LIQUID TIGHT CONDUIT, LB CONDUIT, FITTINGS, HARDWARE, AND OTHER MISCELLANEOUS ITEMS. THESE ITEMS SHALL BE STAINLESS STEEL OR HOT-DIPPED GALVANIZED STEEL AND WILL NOT BE PAID FOR SEPARATELY, BUT SHALL BE INCLUDED IN THE BID PRICE FOR THE CONDUIT ATTACHED TO STRUCTURE AND JUNCTION BOX PAY ITEMS.
5. CONDUIT ATTACHMENT BRACKETS SHALL BE INSTALLED AT 8 FT. SPACINGS (MAXIMUM) ON STRUCTURES.
6. THE CONTRACTOR SHALL FURNISH AND INSTALL EXPANSION/DEFLECTION COUPLINGS (OR OTHER EQUIPMENT AND METHODS AS APPROVED BY THE ENGINEER) FOR ALL BRIDGE JOINTS AS SHOWN ON THE PLAN SHEETS AND DIRECTED BY THE ENGINEER. THE COST OF THIS WORK SHALL BE INCLUDED IN THE COST OF THE PROPOSED CONDUIT.
7. ALL FLEXIBLE LIQUID TIGHT CONDUIT SHALL BE NON-METALLIC AND SHALL INCLUDE CONNECTORS WITH INTEGRAL STAINLESS STEEL KELLUM GRIPS AT THE ENDS FOR INCREASED STRENGTH AND DURABILITY.
8. ALL CONDUIT ATTACHMENT BRACKETS AND HARDWARE SHALL BE STAINLESS STEEL.
9. THE CONTRACTOR SHALL INSTALL THREAD LOCKER ON ALL ATTACHED GALVANIZED CONDUIT THREADED CONNECTIONS TO PREVENT LOOSENING THROUGH VIBRATION.

COMMITMENTS:

MODOT AND KYTC CONTACT REQUIREMENTS; SEE SPECIAL PROVISIONS

CABLE/CONDUIT SCHEDULE:

- Ⓐ ELECTRIC CABLE IN CONDUIT, 600V (XLP-TYPE USE) 2-1C NO.6, 1/C NO.8 GROUND IN 2" DIA., GALVANIZED STEEL CONDUIT ATTACHED TO STRUCTURE.
- Ⓑ ELECTRIC CABLE IN CONDUIT, 600V (XLP-TYPE USE) 2-1C NO.8, 1/C NO.8 GROUND IN 3/4" DIA., GALVANIZED STEEL CONDUIT ATTACHED TO STRUCTURE.

INDEX OF SHEETS

- 1 COVER SHEET
- 2 SIGNATURE SHEET
- 3 (L-1) BILL OF MATERIALS, CABLE/CONDUIT SCHEDULE, GENERAL NOTES, HIGHWAY STANDARDS, INDEX OF SHEETS, JUNCTION BOX SCHEDULE, AND LIGHTING LEGEND,
- 4-5 SUMMARY OF QUANTITIES
- 6 TRAFFIC CONTROL PLAN-MESSAGE BOARD PLACEMENT
- 7 (L-2) NAVIGATION LIGHTING REMOVAL PLAN.
- 8 (L-3) NAVIGATION LIGHTING REMOVAL PLAN.
- 9 (L-4) PROPOSED NAVIGATION LIGHTING PLAN.
- 10 (L-5) PROPOSED NAVIGATION LIGHTING PLAN.
- 11 (L-6) WIRING DIAGRAM.
- 12 (L-7) LIGHTING DETAILS.
- 13 (L-8) LIGHTING DETAILS.
- 14 EXISTING / PROPOSED WHITE NAVIGATIONAL OBSTRUCTION LIGHTING ASSEMBLY
- 15 PROPOSED WHITE NAVIGATIONAL OBSTRUCTION LIGHTING ASSEMBLY DETAILS
- 16 LADDER ATTACHEMENT DETAILS

JUNCTION BOX SCHEDULE:

JB1	JUNCTION BOX, STAINLESS STEEL, ATTACHED TO STRUCTURE, 8" X 6" X 4"
JB2	JUNCTION BOX, STAINLESS STEEL, ATTACHED TO STRUCTURE, 18" X 12" X 6"

HIGHWAY STANDARDS

000001-08_STANDARDSYMBOLSABBREVIATIONS-PATTERNS-001
 001006_DECIMALOFINCH-FOOT
 701001-02_OFFRDOP-2L2W-15FTMINFROMEOP
 701006-05_OFFRDOP-2L2W-15FTTOEOP
 701901-08_TRAFCNTRLDEVICES
 826001-03_OBSTRUCTIONWARNLIGHTINGCONTROLLER240V
 BLR21-9_TYPAPPTRAFCNTRLDEVICES-CONSTRONRURALLOCALHWYS
 805001-01_ELECTRICAL SERVICE INSTALLATION DETAILS

REV. - MS

L-1

MODEL: Default
 FILE NAME: p:\w\idol-pw\ben\ley.com\FWIDOT\Documents\IDOT_Offices\District_9\Projects\78964\CADDData\CADSheets\09_78964+sh-legend-01.dgn

USER NAME =	DESIGNED - MKR	REVISED -
	CHECKED - MKR	REVISED -
PLOT SCALE =	DRAWN - MRT	REVISED -
PLOT DATE =	CHECKED -	REVISED -

**STATE OF ILLINOIS
 DEPARTMENT OF TRANSPORTATION**

**BILL OF MATERIALS, CABLE/CONDUIT SCHEDULE, GENERAL NOTES,
 HIGHWAY STANDARDS, INDEX OF SHEETS, JUNCTION BOX SCHEDULE,
 AND LIGHTING LEGEND**

F.A.S. RTE.	SECTION	COUNTY	TOTAL SHEETS	SHEET NO.
944	138D(I-10)	ALEXANDER	16	3
CONTRACT NO. 78964				

SHEET OF SHEETS

ILLINOIS FED. AID PROJECT

SUMMARY OF QUANTITIES

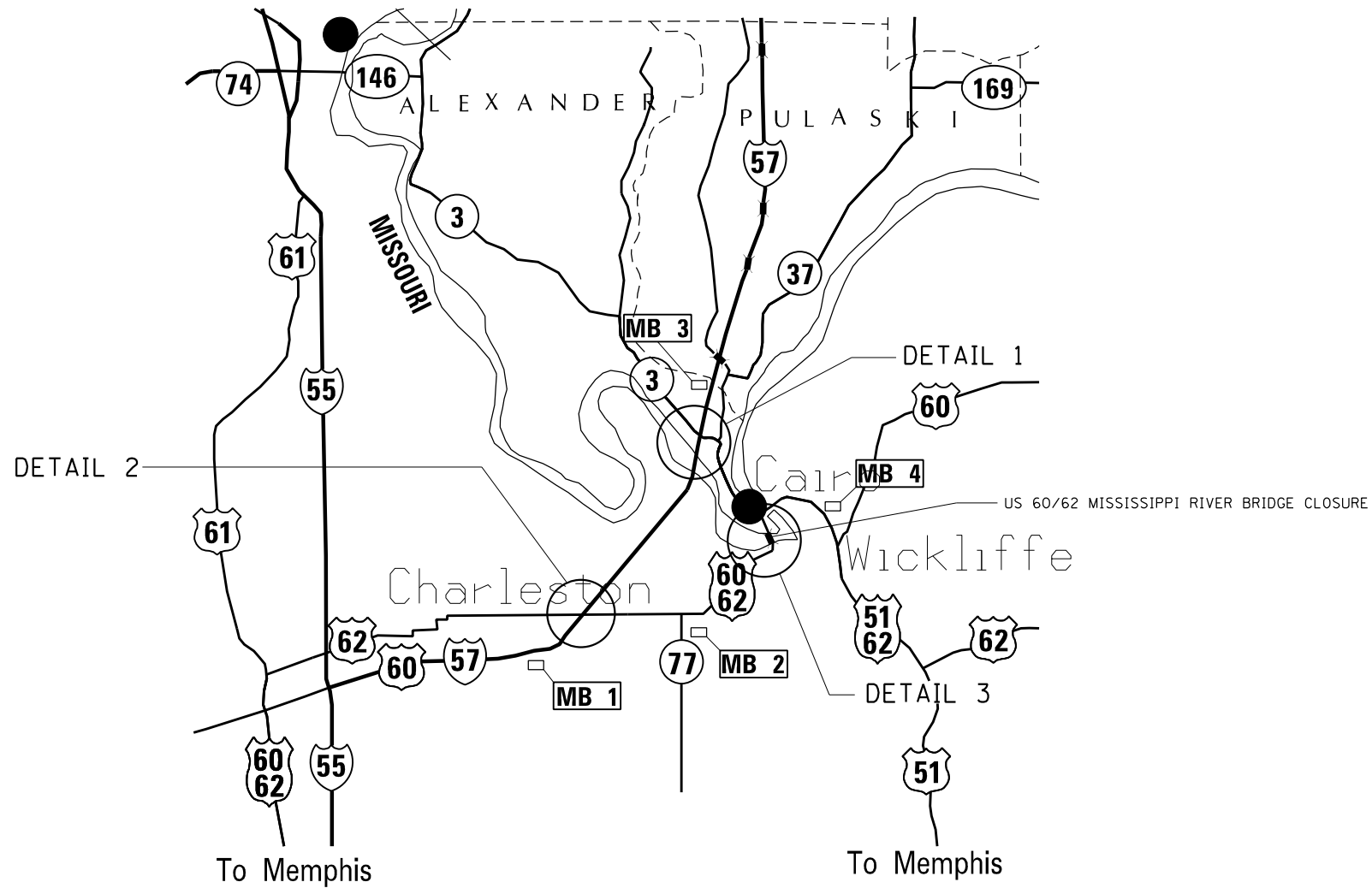
COUNTY:	ALEXANDER CO	MISSISSIPPI CO
ROUTE:	US 60 & 62	US 60 & 62
FUNDING:	80% FEDERAL / 20% STATE	100% MISSOURI
LOCATION:	SN 002-0005	SN 002-0005
	LIGHTING	LIGHTING
	0021	0021

CODE NUMBER	ITEM DESCRIPTION	UNIT	TOTAL QUANTITY	LIGHTING 0021	LIGHTING 0021
67000400	ENGINEER'S FIELD OFFICE, TYPE A	CAL MO	7	3.5	3.5
67100100	MOBILIZATION	L SUM	1	0.5	0.5
X7010238	CHANGEABLE MESSAGE SIGN (SPECIAL)	CAL MO	6	3	3
80400100	ELECTRIC SERVICE INSTALLATION	EACH	1	0.5	0.5
81028200	UNDERGROUND CONDUIT, GALVANIZED STEEL, 2" DIA.	FOOT	25	12.5	12.5
81100453	CONDUIT ATTACHED TO STRUCTURE, 3/4" DIA. STAINLESS STEEL	FOOT	80	40	40
81100600	CONDUIT ATTACHED TO STRUCTURE, 2" DIA., GALVANIZED STEEL	FOOT	3,690	1,845	1,845
81300310	JUNCTION BOX, STAINLESS STEEL, ATTACHED TO STRUCTURE, 8" X 6" X 4"	EACH	4	2	2
81300800	JUNCTION BOX, STAINLESS STEEL, ATTACHED TO STRUCTURE, 18" X 12" X 6"	EACH	6	3	3
81702120	ELECTRIC CABLE IN CONDUIT, 600V (XLP-TYPE USE) 1/C NO. 8	FOOT	4,176	2,088	2,088
81702130	ELECTRIC CABLE IN CONDUIT, 600V (XLP-TYPE USE) 1/C NO. 6	FOOT	7,584	3,792	3,792
82200605	WATERWAY OBSTRUCTION WARNING LUMINAIRE, LED	EACH	6	3	3
82200608	WATERWAY OBSTRUCTION WARNING LUMINAIRE, LED, 180 DEGREE RED	EACH	8	4	4
82200609	WATERWAY OBSTRUCTION WARNING LUMINAIRE, LED, 360 DEGREE GREEN	EACH	2	1	1

REV. - MS

MODEL: Default
 FILE: M:\MSA\Projects\78964\CADDData\CAD\Sheets\DOT Office\Sheet\9\Projects\78964\CADDData\CAD\Sheets\DOT78964-Sheets.dgn

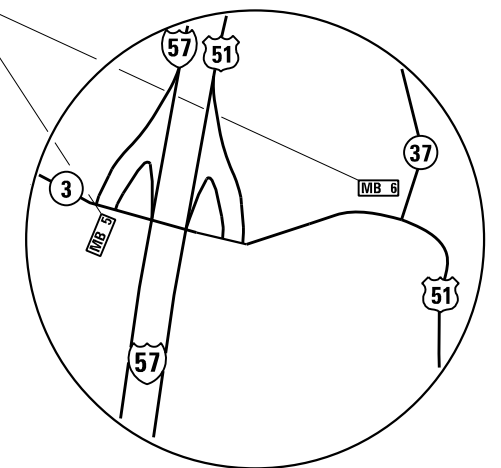
USER NAME = EhrenKirby PLOT SCALE = 100.0000' / in. PLOT DATE = 4/6/2023	DESIGNED - DRAWN - CHECKED - DATE -	REVISED - REVISED - REVISED - REVISED -	STATE OF ILLINOIS DEPARTMENT OF TRANSPORTATION	SUMMARY OF QUANTITIES	SCALE:	SHEET OF SHEETS STA. TO STA.	F.A.S. RTE. 944 SECTION 138D(I-10) COUNTY ALEXANDER TOTAL SHEETS 16 SHEET NO. 4 CONTRACT NO. 78964 ILLINOIS FED. AID PROJECT
--	--	--	---	------------------------------	--------	------------------------------	--



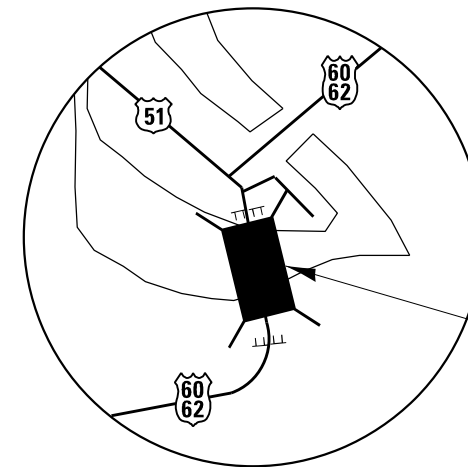
60/62 BRIDGE
TO MISSOURI
CLOSED AHEAD

USE
OTHER
ROUTES

Message Typical all signs (Illinois)
Actual message subject
to approval of the Engineer.



DETAIL 1
(SHARED COST)



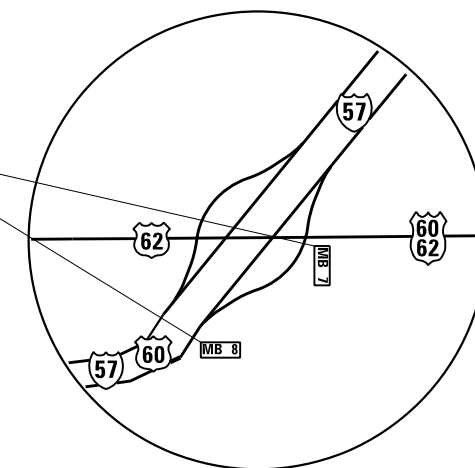
DETAIL 3
(SHARED COST)

SEE HIGHWAY STANDARD B.L.R. 21-9 FOR DETAILS
AND SIGNS, COST INCLUDED WITH TRAFFIC CONTROL AND
PROTECTION, BLR 21.

60/62 BRIDGE
TO ILLINOIS
CLOSED AHEAD

USE
OTHER
ROUTES

Message Typical all signs (Missouri/Kentucky)
Actual message subject
to approval of the Engineer.



DETAIL 2
(SHARED COST)

MODEL: Default
 FILE: MainMap_Plan.kml
 PROJECT: 78964\CADD\Drawings\DOT Offices\Drawings\78964\CADD\Drawings\78964-Sheets.dgn
 DATE: 4/6/2023

USER NAME = Ehren Kirby	DESIGNED -	REVISED -
	DRAWN -	REVISED -
PLOT SCALE = 100,0000' / in.	CHECKED -	REVISED -
PLOT DATE = 4/6/2023	DATE -	REVISED -

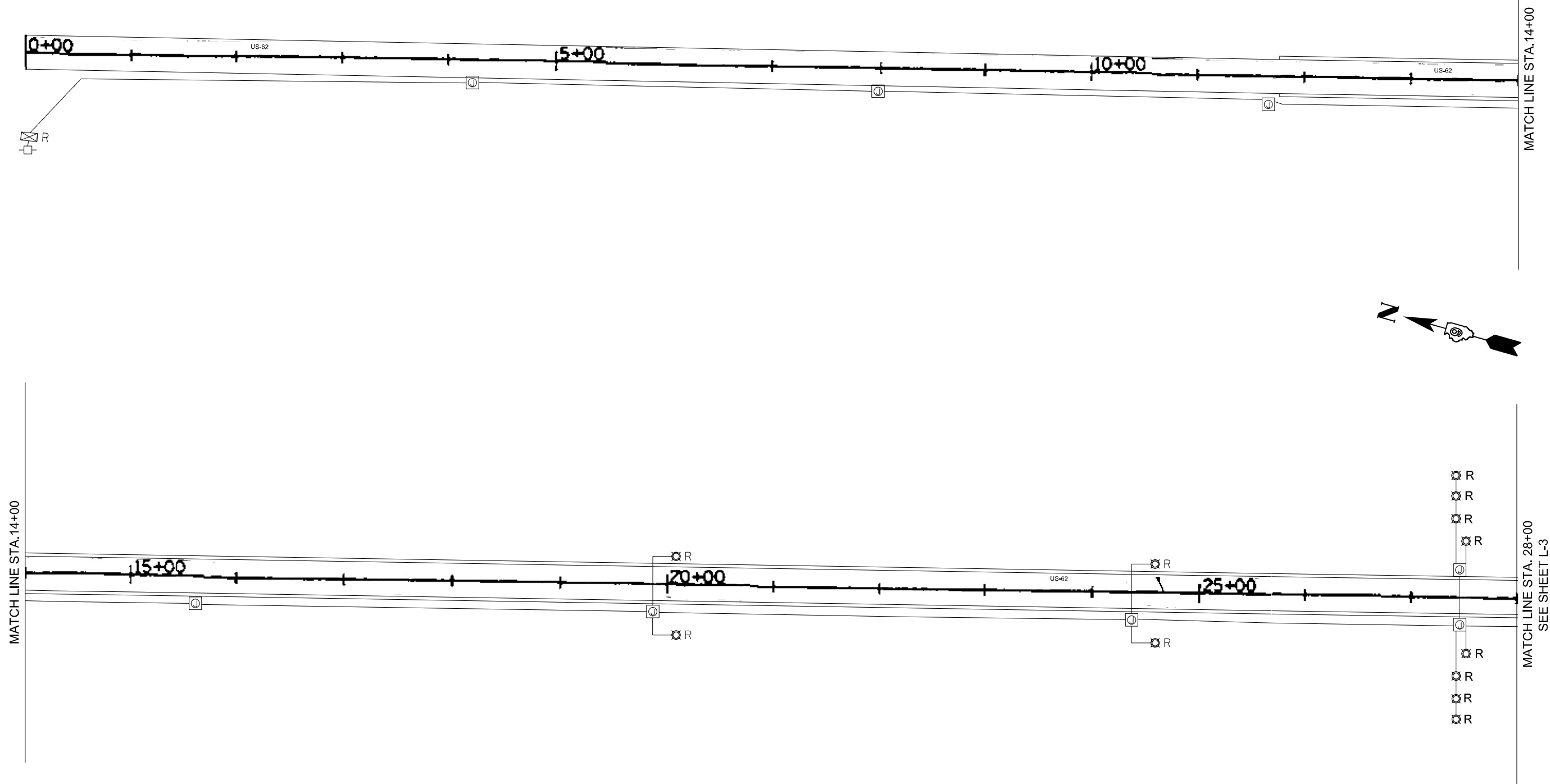
**STATE OF ILLINOIS
DEPARTMENT OF TRANSPORTATION**

**TRAFFIC CONTROL PLAN & MESSAGE BOARD PLACEMENT
SN 002-0005**

SCALE: SHEET OF SHEETS STA. TO STA.

F.A.S RTE.	SECTION	COUNTY	TOTAL SHEETS	SHEET NO.
944	138DI-10)	ALEXANDER	16	6
CONTRACT NO. 78964				
ILLINOIS FED. AID PROJECT				

MODEL: Default
 FILE NAME: S:\Projects\3505 - Various Lighting Projects Statewide - EIM\Project Work\Electrical\District 9\Cairo\CADD\Sheet\DS 78964-shl-remNavLight-01.dgn



NOTES:
 1. FOR LEGEND SEE SHEET L-1

REV. - MS
 L-2

USER NAME =	DESIGNED - MKR	REVISED -
	CHECKED - MKR	REVISED -
PLOT SCALE = 1"=50'	DRAWN - MRT	REVISED -
PLOT DATE =	CHECKED -	REVISED -

**STATE OF ILLINOIS
 DEPARTMENT OF TRANSPORTATION**

**NAVIGATION LIGHTING REMOVAL PLAN
 US-60/62 BRIDGE**

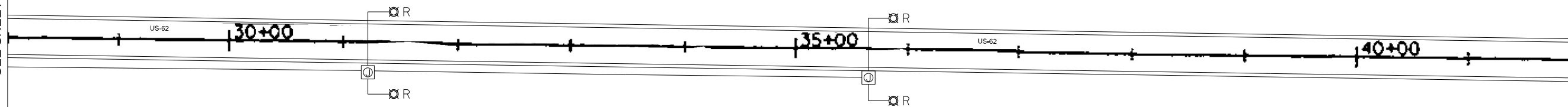
SHEET OF SHEETS

F.A.S. RTE. 944	SECTION 138D(I-10)	COUNTY ALEXANDER	TOTAL SHEETS 16	SHEET NO. 7
ILLINOIS FED. AID PROJECT			CONTRACT NO. 78964	

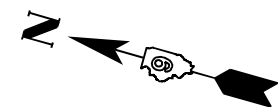
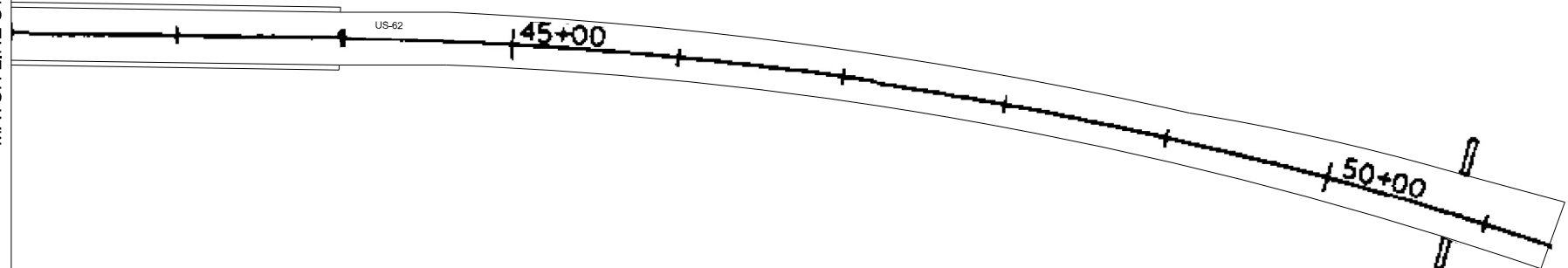
MODEL: Default
 FILE NAME: S:\Projects\3505 - Various Lighting Projects Statewide - EIMV\Project Work\Electrical\District 9\Cairo\CADD\Sheet\DS 78964-shl-remNavLight-02.dgn

MATCH LINE STA. 28+00
 SEE SHEET L-2

MATCH LINE STA. 42+00



MATCH LINE STA. 42+00



NOTES:

1. FOR LEGEND SEE SHEET L-1

L-3

USER NAME =	DESIGNED - MKR	REVISED -
	CHECKED - MKR	REVISED -
PLOT SCALE = 1"=50'	DRAWN - MRT	REVISED -
PLOT DATE =	CHECKED -	REVISED -

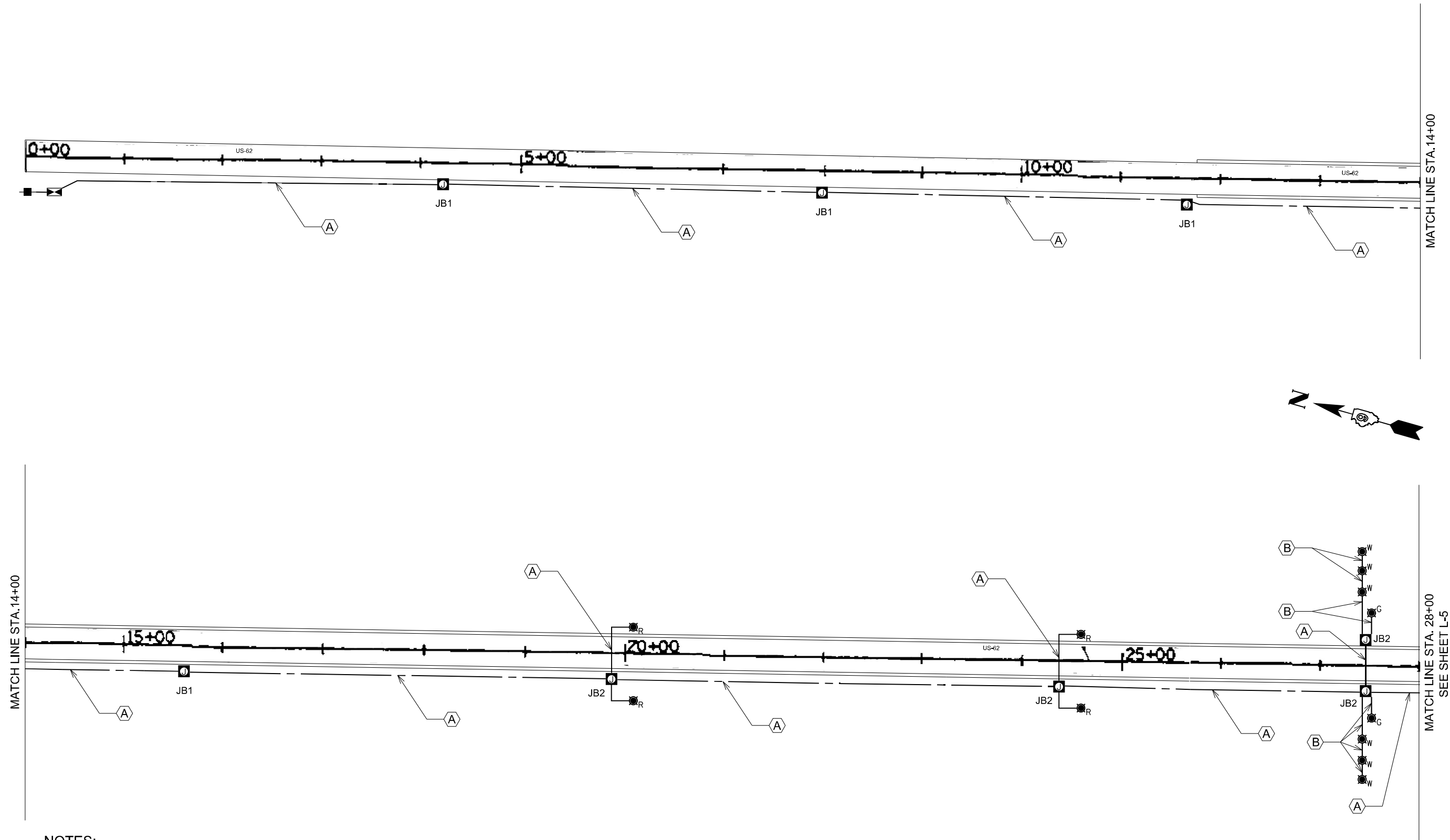
STATE OF ILLINOIS
 DEPARTMENT OF TRANSPORTATION

NAVIGATION LIGHTING REMOVAL PLAN
 US-60/62 BRIDGE

SHEET OF SHEETS

F.A.S. RTE.	SECTION	COUNTY	TOTAL SHEETS	SHEET NO.
944	138D(I-10)	ALEXANDER	16	8
ILLINOIS FED. AID PROJECT			CONTRACT NO. 78964	

MODEL: Default
 FILE NAME: S:\Projects\3505 - Various Lighting Projects Statewide - EIM\Project Work\Electrical\District 9\Cairo\CADD\Sheet\DS 78964-sh-NavLight-01.dgn



NOTES:

1. FOR LEGEND SEE SHEET L-1
2. SEE SHEET L-7 FOR CONDUIT ATTACHED TO STRUCTURE DETAILS.
3. THE CONTRACTOR SHALL INSTALL LIQUID TIGHT FLEXIBLE CONDUIT AT BRIDGE EXPANSION JOINTS AS DIRECTED BY THE ENGINEER. THE COST OF THE LIQUID TIGHT FLEXIBLE CONDUIT SHALL BE INCLUDED IN THE COST OF THE "CONDUIT ATTACHED TO STRUCTURE, 2" DIA., GALVANIZED STEEL" PAY ITEM.

L-4

USER NAME =	DESIGNED - MKR	REVISED -
	CHECKED - MKR	REVISED -
PLOT SCALE = 1"=50'	DRAWN - MRT	REVISED -
PLOT DATE =	CHECKED -	REVISED -

**STATE OF ILLINOIS
 DEPARTMENT OF TRANSPORTATION**

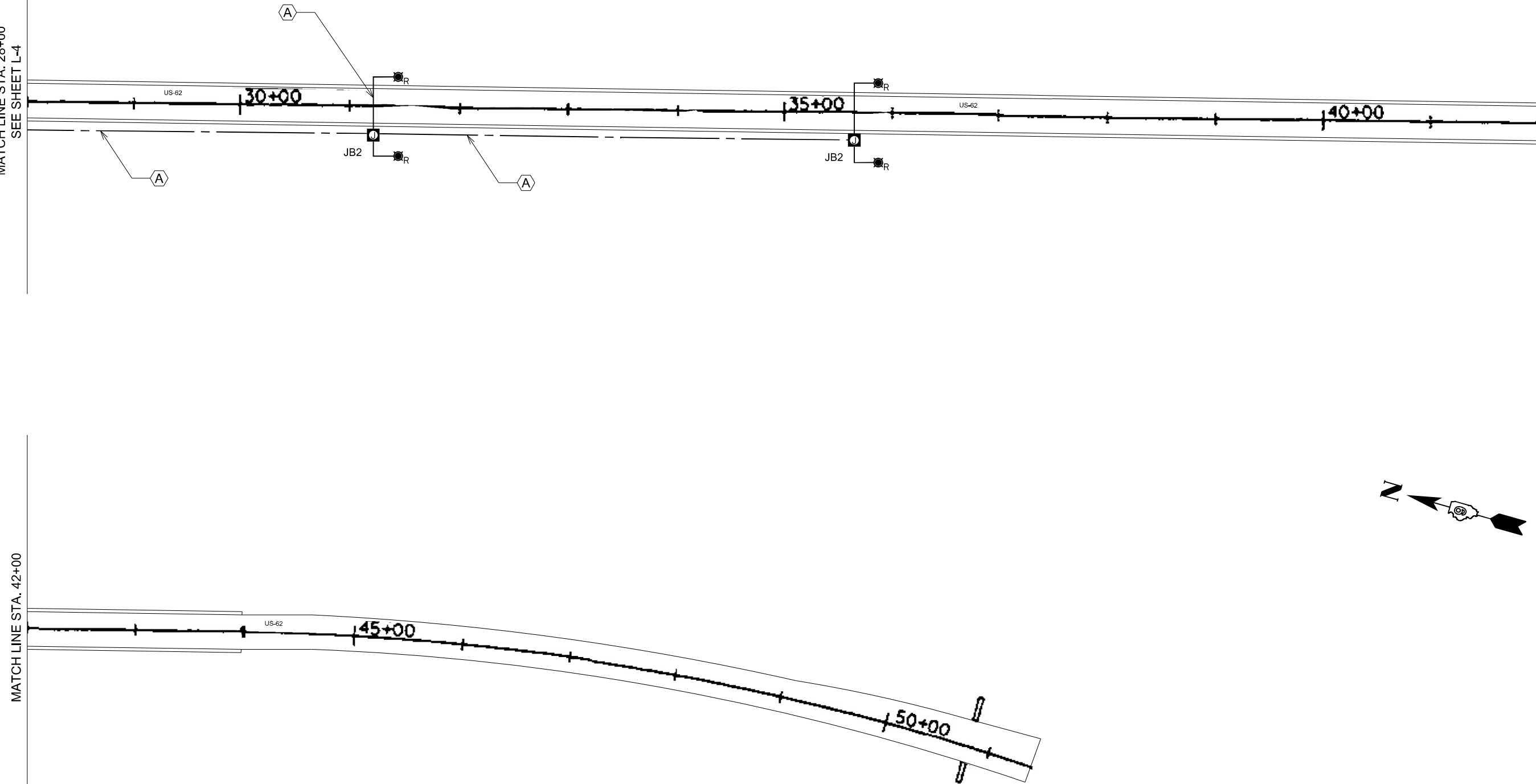
**PROPOSED NAVIGATION LIGHTING PLAN
 US-60/62 BRIDGE**

F.A.S. RTE. 944	SECTION 138D(I-10)	COUNTY ALEXANDER	TOTAL SHEETS 16	SHEET NO. 9
ILLINOIS FED. AID PROJECT			CONTRACT NO. 78964	

MODEL: Default
 FILE NAME: S:\Projects\3505 - Various Lighting Projects Statewide - EIM\Project Work\Electrical\District 9\Cairo\CADD\Sheet\DS 78964-sh-Nav\light-02.dgn

MATCH LINE STA. 28+00
 SEE SHEET L-4

MATCH LINE STA. 42+00



NOTES:

1. FOR LEGEND SEE SHEET L-1
2. SEE SHEET L-7 FOR CONDUIT ATTACHED TO STRUCTURE DETAILS.
3. THE CONTRACTOR SHALL INSTALL LIQUID TIGHT FLEXIBLE CONDUIT AT BRIDGE EXPANSION JOINTS AS DIRECTED BY THE ENGINEER. THE COST OF THE LIQUID TIGHT FLEXIBLE CONDUIT SHALL BE INCLUDED IN THE COST OF THE "CONDUIT ATTACHED TO STRUCTURE, 2"DIA., GALVANIZED STEEL" PAY ITEM.

L-5

USER NAME =	DESIGNED - MKR	REVISED -
	CHECKED - MKR	REVISED -
PLOT SCALE = 1"=50'	DRAWN - MRT	REVISED -
PLOT DATE =	CHECKED -	REVISED -

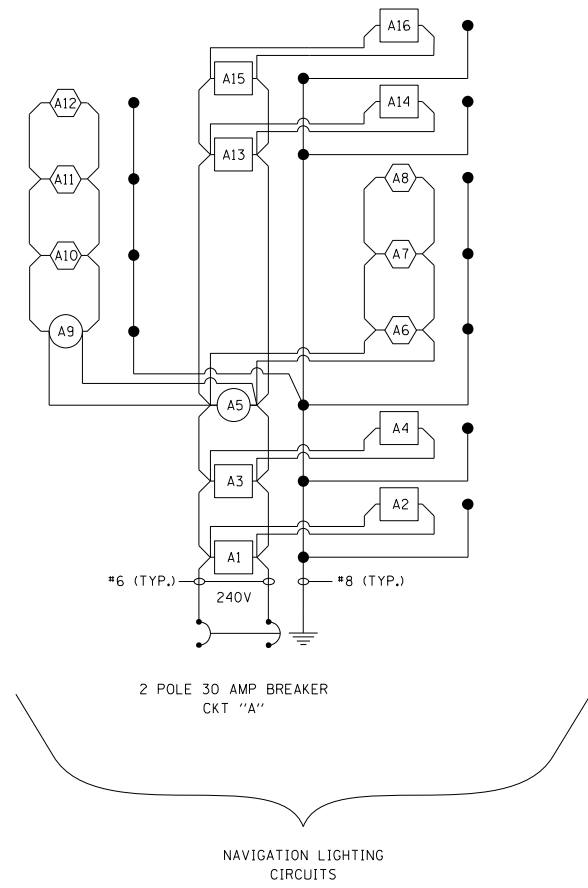
**STATE OF ILLINOIS
 DEPARTMENT OF TRANSPORTATION**

**PROPOSED NAVIGATION LIGHTING PLAN
 US-60/62 BRIDGE**

SHEET OF SHEETS

F.A.S. RTE.	SECTION	COUNTY	TOTAL SHEETS	SHEET NO.
944	138D(I-10)	ALEXANDER	16	10
ILLINOIS FED. AID PROJECT			CONTRACT NO. 78964	

MODEL: Default
 FILE NAME: S:\Projects\3505 - Various Lighting Projects Statewide - EJM\Project Work\Electrical\District 9\Cairo\CADD\Sheet\DS 78964-sh-Wiring Diagram-01.dgn



NAVIGATION OBSTRUCTION LIGHTING CONTROLLER
 CAIRO BRIDGE AT ILLINOIS END OF BRIDGE
 BASE MOUNT, 240V

LEGEND

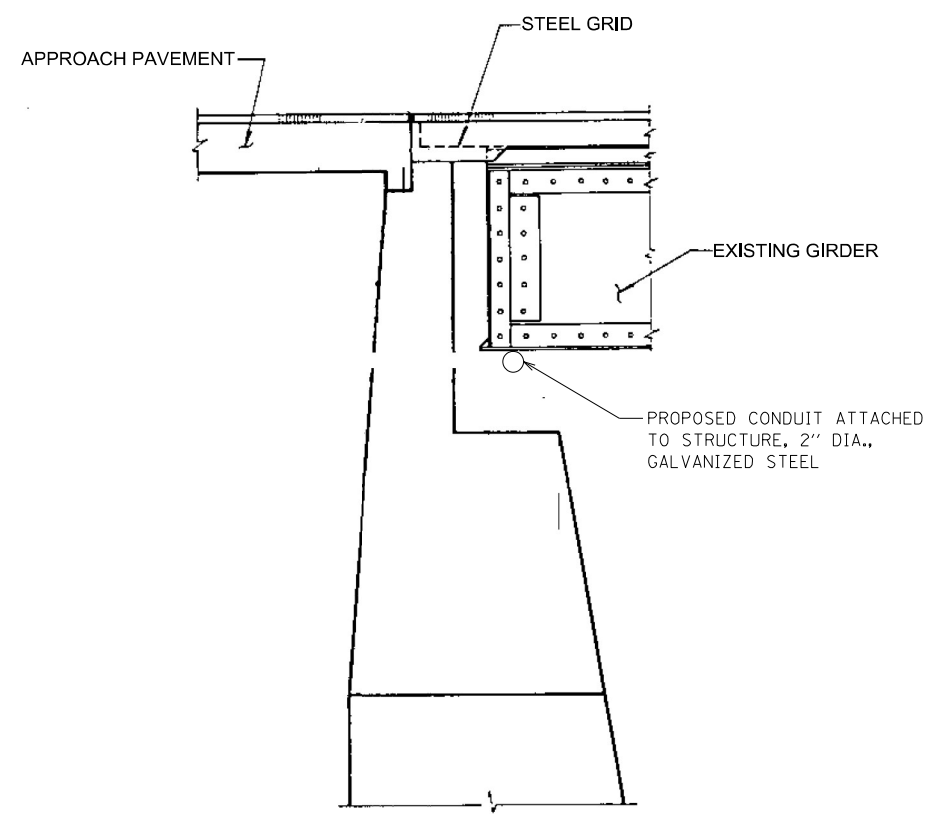
- A# PROPOSED WHITE WATERWAY OBSTRUCTION WARNING LUMNAIRE.
- A# PROPOSED GREEN WATERWAY OBSTRUCTION WARNING LUMNAIRE.
- A# PROPOSED RED WATERWAY OBSTRUCTION WARNING LUMNAIRE.
- GROUND ROD.

NOTES:

1. ALL NECESSARY REVISIONS TO THE WIRING SHOWN ON THIS SHEET SHALL BE MADE AT NO ADDITIONAL COST TO THE DEPARTMENT AND TO THE SATISFACTION OF THE ENGINEER.

	USER NAME =	DESIGNED - MKR	REVISED -	STATE OF ILLINOIS DEPARTMENT OF TRANSPORTATION	WIRING DIAGRAM	F.A.S. RTE.	SECTION	COUNTY	TOTAL SHEETS	SHEET NO.	
	PLOT SCALE =	DRAWN - MRT	REVISED -			944	138D(I-10)	ALEXANDER	16	11	
	PLOT DATE =	CHECKED -	REVISED -			CONTRACT NO. 78964					
						ILLINOIS FED. AID PROJECT					
SHEET OF SHEETS											

MODEL: Default
 FILE NAME: S:\Projects\3505 - Various Lighting Projects Statewide - EJM\Project Work\Electrical\District 9\Cairo\CADD\Sheet\DS 78964-sh-Navlight_Details-01.dgn



TYPICAL SECTION THRU NORTH AND SOUTH ABUTMENTS



CONDUIT ATTACHED TO STRUCTURE DETAIL

NOTES:

1. ATTACH 2 INCH DIA GRS CONDUIT TO THE BOTTOM OF THE LOWER CORD IN THE TRUSS SPAN. THE CONDUIT SHALL BE SUPPORTED BY CONDUIT CLAMPS AT MAXIMUM SPACING INTERVALS OF 5 FT. CONDUIT SHALL BE SECURELY FASTENED WITHIN 3 FT. OF EACH JUNCTION BOX AND CONDUIT BODY.

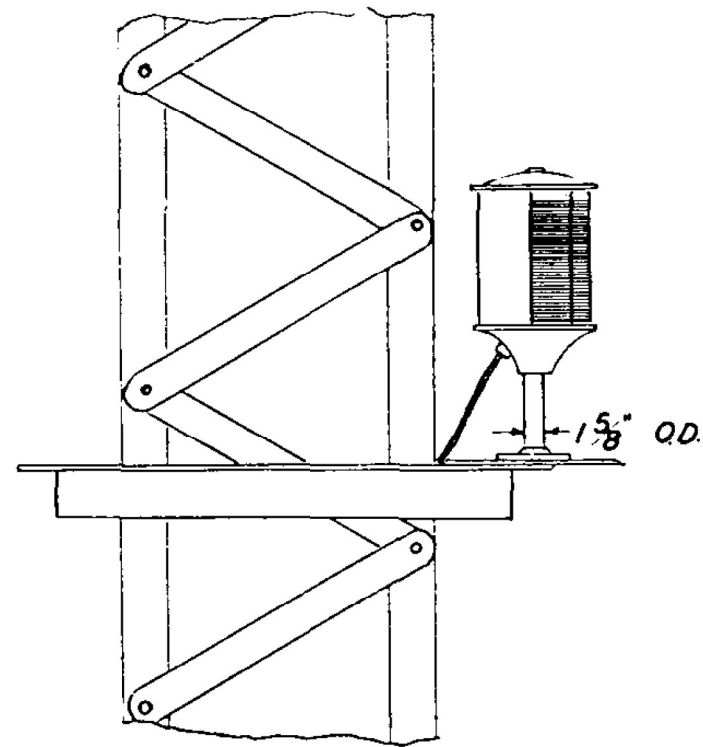


TYPICAL WHITE NAVIGATION LIGHT DETAIL

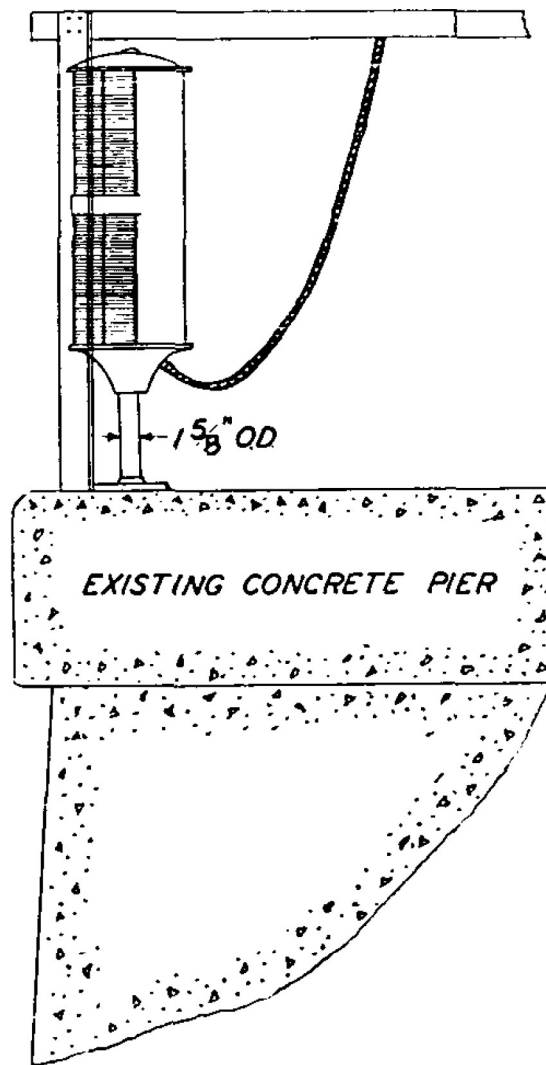
USER NAME =	DESIGNED - MKR	REVISED -	STATE OF ILLINOIS DEPARTMENT OF TRANSPORTATION	NAVIGATION LIGHTING DETAILS	F.A.S. RTE.	SECTION	COUNTY	TOTAL SHEETS	SHEET NO.	
CHECKED - MKR	DRAWN - MRT	REVISED -			944	138D(I-10)	ALEXANDER	16	12	
PLOT SCALE =	CHECKED -	REVISED -			CONTRACT NO. 78964					
PLOT DATE =					ILLINOIS FED. AID PROJECT					
				SHEET OF SHEETS						

PROPOSED NAVIGATION LIGHTING INSTALLATION SHALL UTILIZE THE EXISTING NAVIGATION LIGHTING DETAILS SHOWN BELOW. SEE SHEET L-7 FOR ADDITIONAL DETAILS.

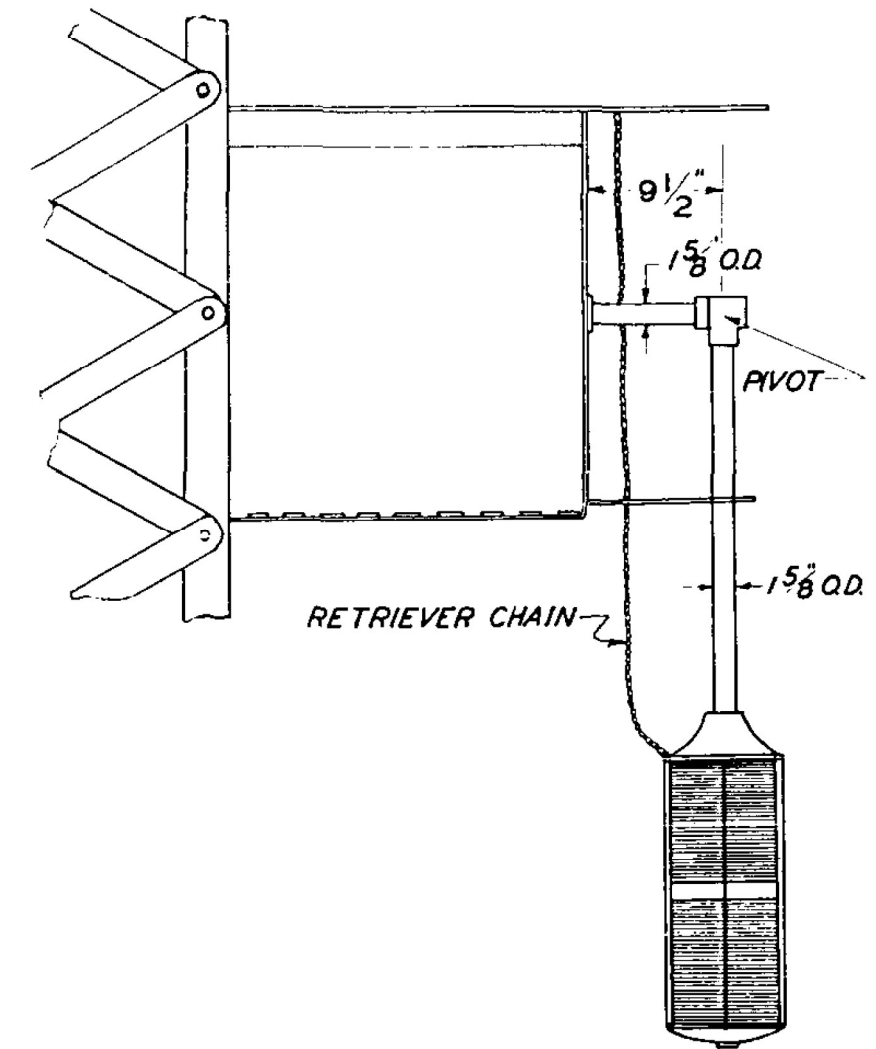
5



WHITE LIGHTS



RED LIGHTS



GREEN LIGHTS

DETAILS OF EXISTING NAVIGATION LIGHTS

MODEL: Default
FILE NAME: S:\Projects\3505 - Various Lighting Projects Statewide - EIM\Project Work\Electrical\District 9\Cairo\CADD\Sheet\DS 78964-sh-Navlight_Details-02.dgn

1/26/2023 2:09:50 PM

USER NAME =	DESIGNED - MKR	REVISED -
	CHECKED - MKR	REVISED -
PLOT SCALE =	DRAWN - MRT	REVISED -
PLOT DATE =	CHECKED -	REVISED -

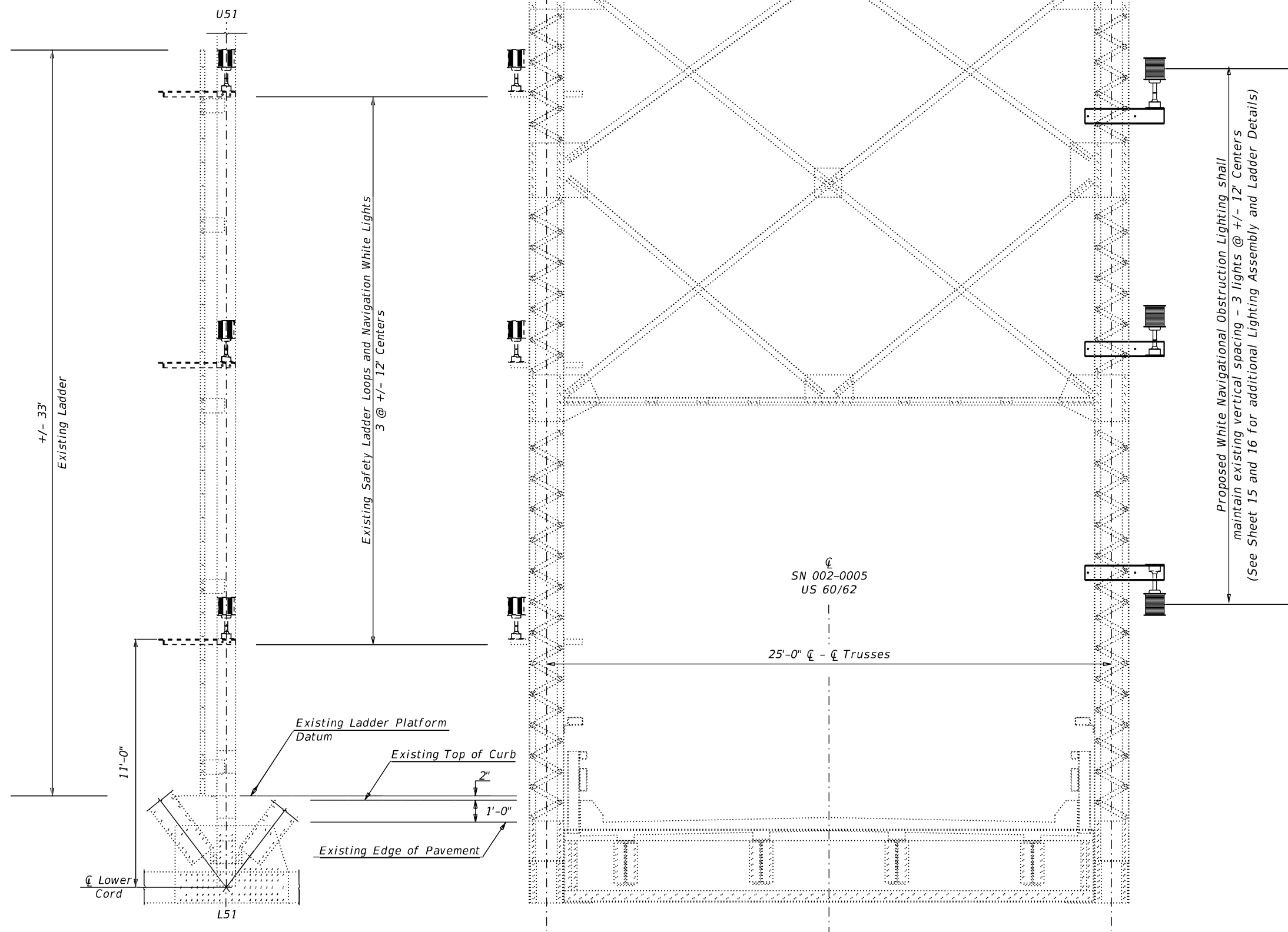
STATE OF ILLINOIS
DEPARTMENT OF TRANSPORTATION

NAVIGATION LIGHTING DETAILS

SHEET OF SHEETS

F.A.S. RTE.	SECTION	COUNTY	TOTAL SHEETS	SHEET NO.
944	138D(I-10)	ALEXANDER	16	13
CONTRACT NO. 78964				
ILLINOIS FED. AID PROJECT				

U 51 Existing (Typ. U/S & D/S)
 U 51 Proposed (Typ. U/S & D/S)



- NOTES:**
1. Removal of existing Vertical Member 51 Navigational Obstruction Light Assembly and associated components shall be included in the contract lump sum price for Removal of Navigation Obstruction Warning Lighting System.
 2. Contractor shall field verify dimensions and locations of existing locking brackets and attachment channel. Coordinate with the installation of new navigation obstruction lighting for possible interferences and for reuse of components.
 3. Welding shall only be permitted to the existing lock plates. Welding to the bridge structural members shall not be permitted.
 4. All welding shall be performed under the supervision of the Resident Engineer.
 5. The installed elevation of the green light shall be adjusted to be below the lowest bridge structure per USCG requirements.
 6. Navigation Obstruction Lights shall be spaced to maintain vertical clearance between lights per USCG regulations.
 Vertical spacing for upper three white lights: maximum 15'
 Vertical spacing for lowest white light and green light: maximum 15'
 7. All modifications required for installing Navigation Obstruction Light Assembly shall be included in the contract unit price per each for Waterway Obstruction Warning Luminaire, LED.

EXISTING VERTICAL MEMBER 51 NAVIGATIONAL OBSTRUCTION LIGHTING ASSEMBLY
 (Typical Upstream and Downstream)

Note: Ladder not shown for clarity.

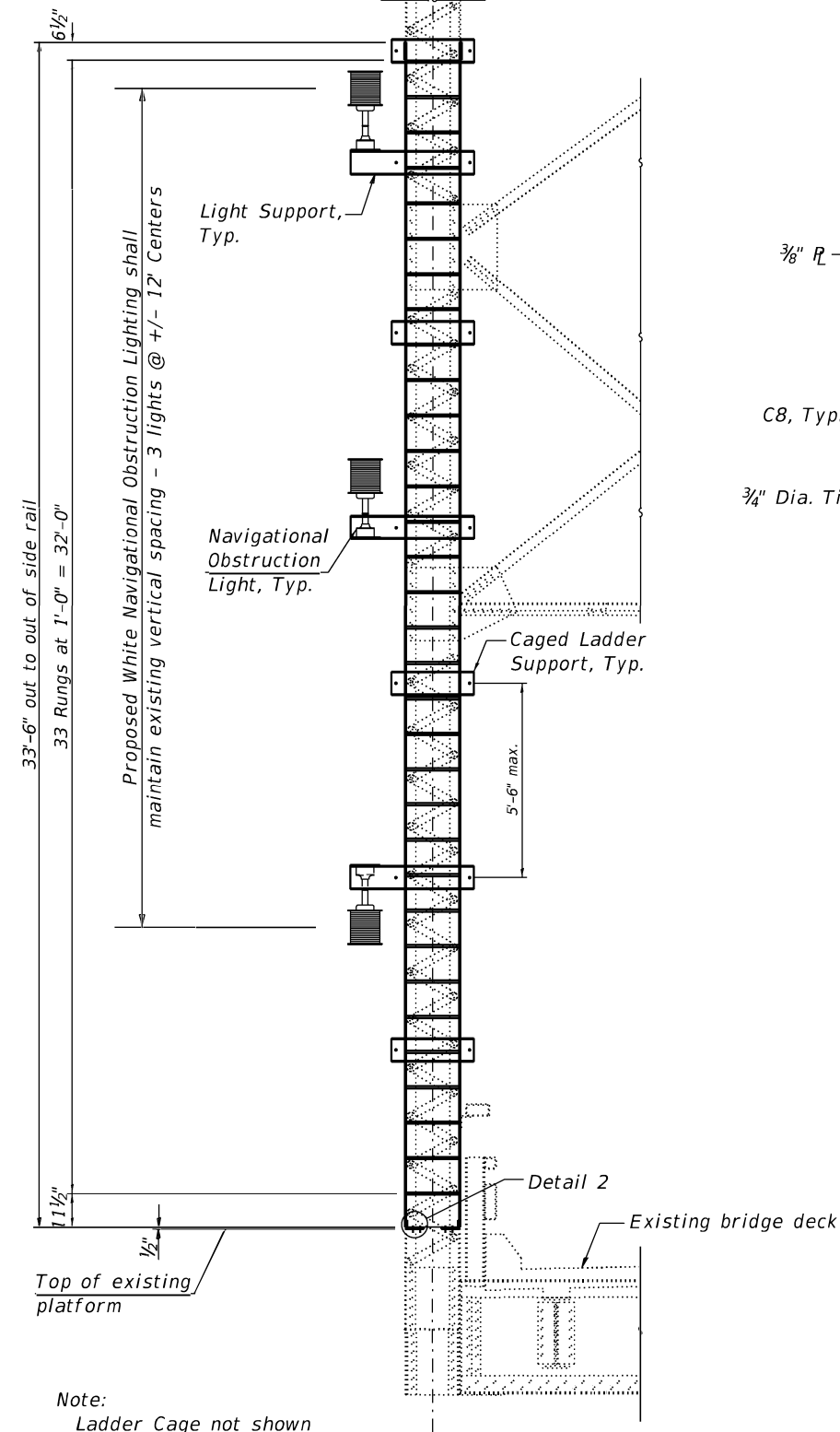
MODEL: Ladder Details
 FILE NAME: P:\Public\aw_bentley.com\PROJECTS\78964\CADD\CADD\Sheet\078964_Sheets.dgn

USER NAME = Ehren.Kirby	DESIGNED - _____	REVISED - _____
	DRAWN - _____	REVISED - _____
PLOT SCALE = 100.0000' / in.	CHECKED - _____	REVISED - _____
PLOT DATE = 4/7/2023	DATE - _____	REVISED - _____

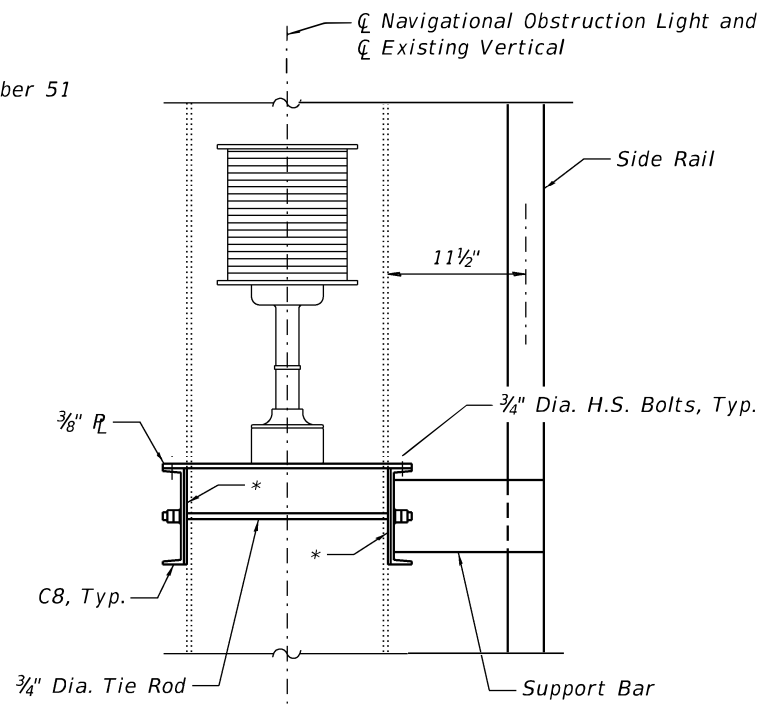
**STATE OF ILLINOIS
 DEPARTMENT OF TRANSPORTATION**

S.N. 002-0005 - VERTICAL MEMBER 51	
EXISTING /PROPOSED WHITE	
NAVIGATIONAL OBSTRUCTION LIGHTING ASSEMBLY	
SCALE: _____	SHEET _____ OF _____ SHEETS
STA. _____	TO STA. _____

F.A.S RTE.	SECTION	COUNTY	TOTAL SHEETS	SHEET NO.
944	138DI-10)	ALEXANDER	16	14
CONTRACT NO. 78964				
ILLINOIS FED. AID PROJECT				

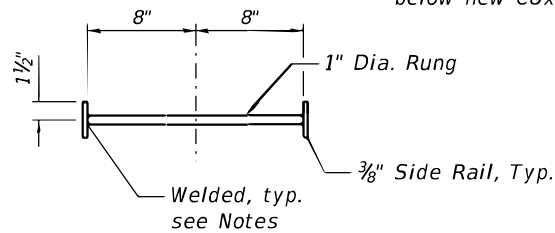


VERTICAL MEMBER 51 - LADDER ATTACHMENT DETAIL
(Typical Upstream and Downstream)

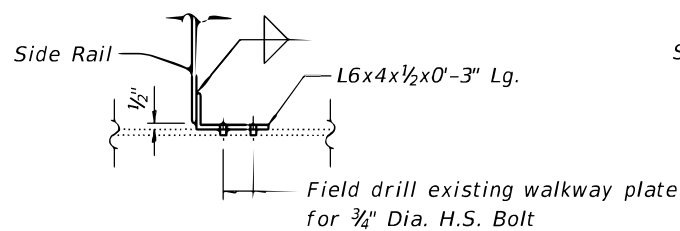


VIEW F-F

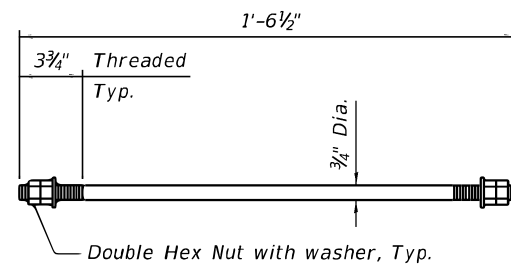
Note:
Mounting plate for light to be located as required, above or below new C8x11.5



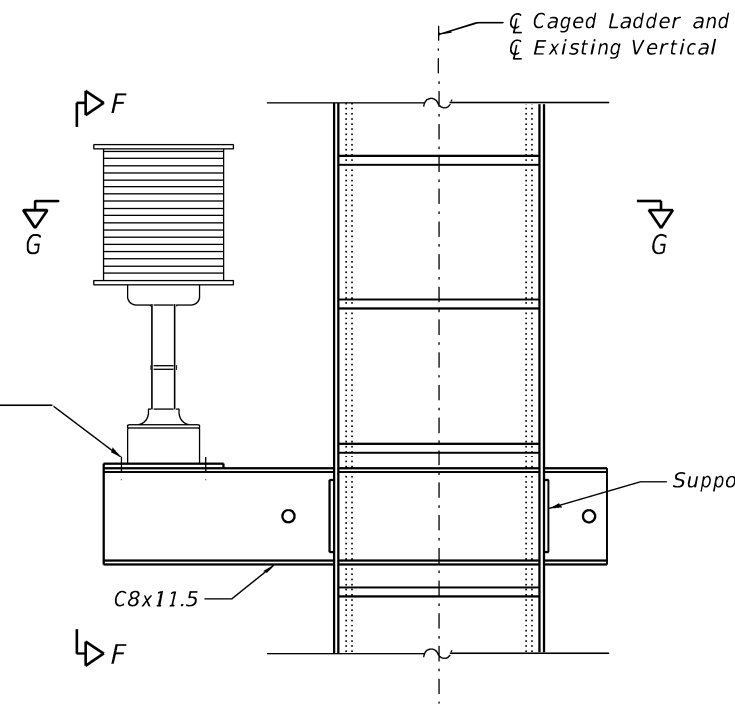
LADDER RUNG DETAIL



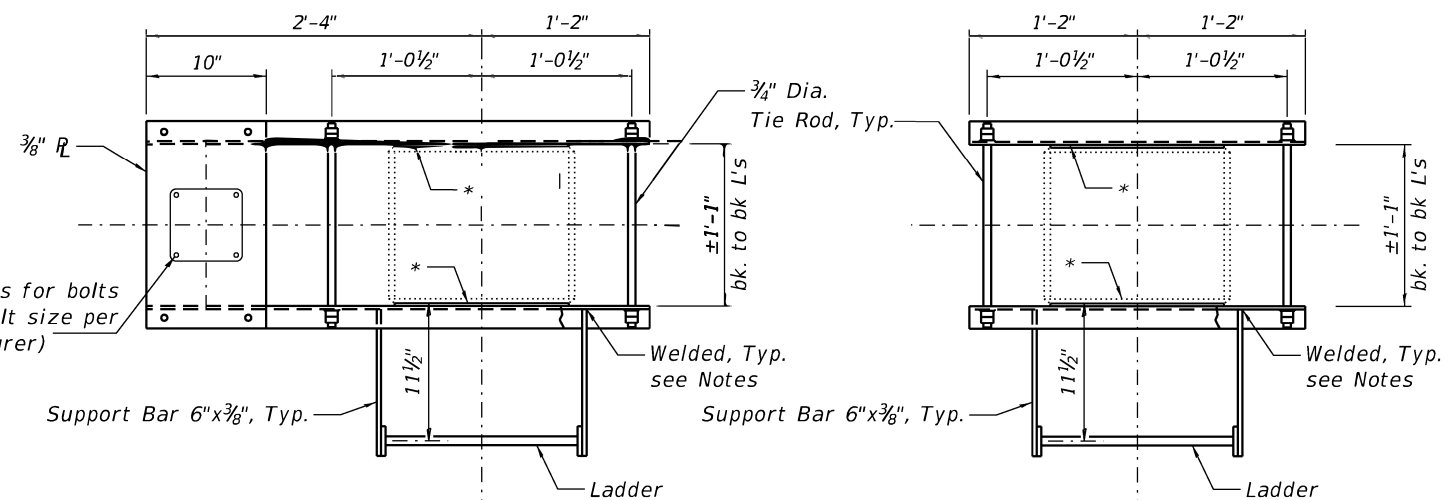
DETAIL 2



TIE ROD DETAIL



LIGHT SUPPORT DETAIL
(Includes ladder support)



SECTION G-G

SECTION H-H

* 1/8" thk. Neoprene placed between existing vertical and new channel

NOTES:

1. Fasteners shall be ASTM A 325 Type 1, mechanically galvanized bolts.
2. Structural steel for Access Ladder shall conform to M270 Grade 36 and shall be hot dip galvanized in accordance with the Hot Dip Galvanizing for Structural Steel special provision.
3. Ladder and cage shall meet OSHA Requirements.
4. For ladder cage details and additional notes, see sheet 16.
5. All welds shall be 3/16" fillet welds and shall be all around and continuous, unless otherwise shown.
6. All work shown on this sheet is included with pay item Access Ladder.
7. For light locations, also see sheet 14.

MODEL: Ladder Details
FILE NAME: P:\Public\pwh\berkeley.com\PHWDOT\Documents\DOT Offices\District 9\Projects\78964\CADD\data\CAD\Sheets\078964_Sheets.dgn

USER NAME = Ehren.Kirby	DESIGNED - _____	REVISED - _____
	DRAWN - _____	REVISED - _____
PLOT SCALE = 100.0000' / in.	CHECKED - _____	REVISED - _____
PLOT DATE = 4/7/2023	DATE - _____	REVISED - _____

**STATE OF ILLINOIS
DEPARTMENT OF TRANSPORTATION**

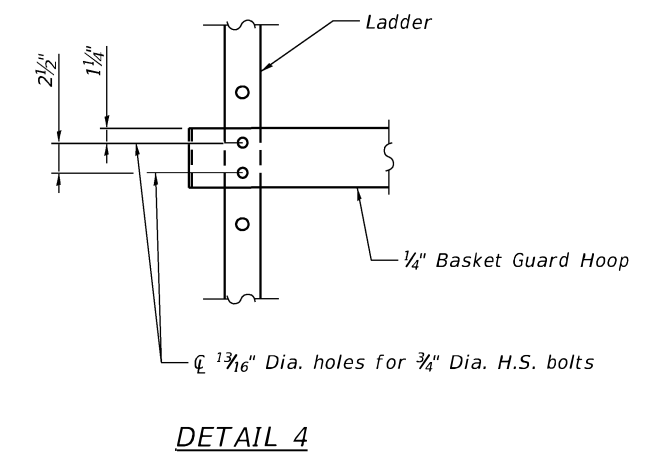
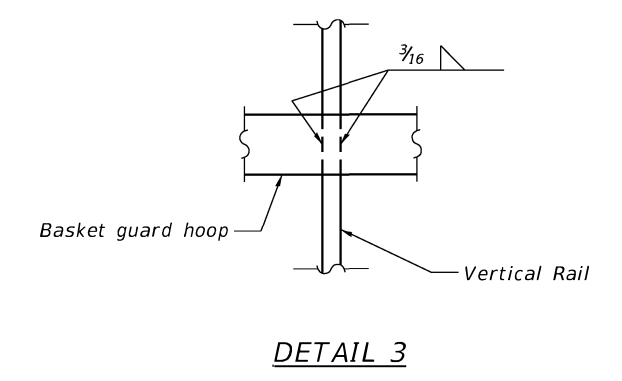
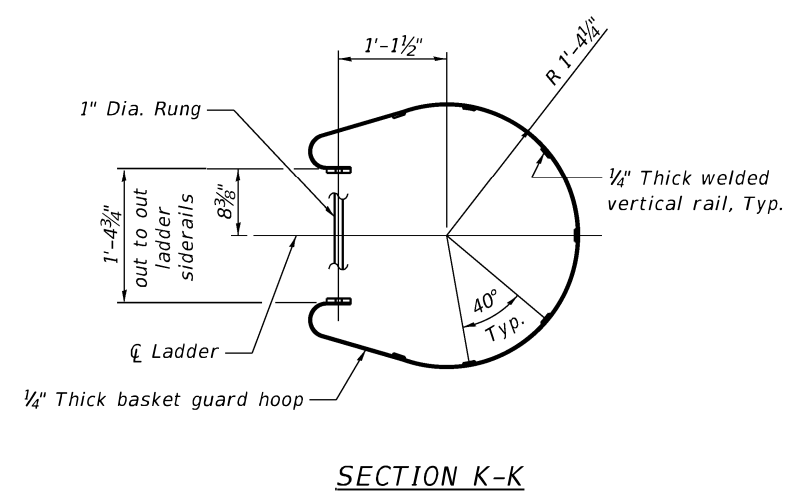
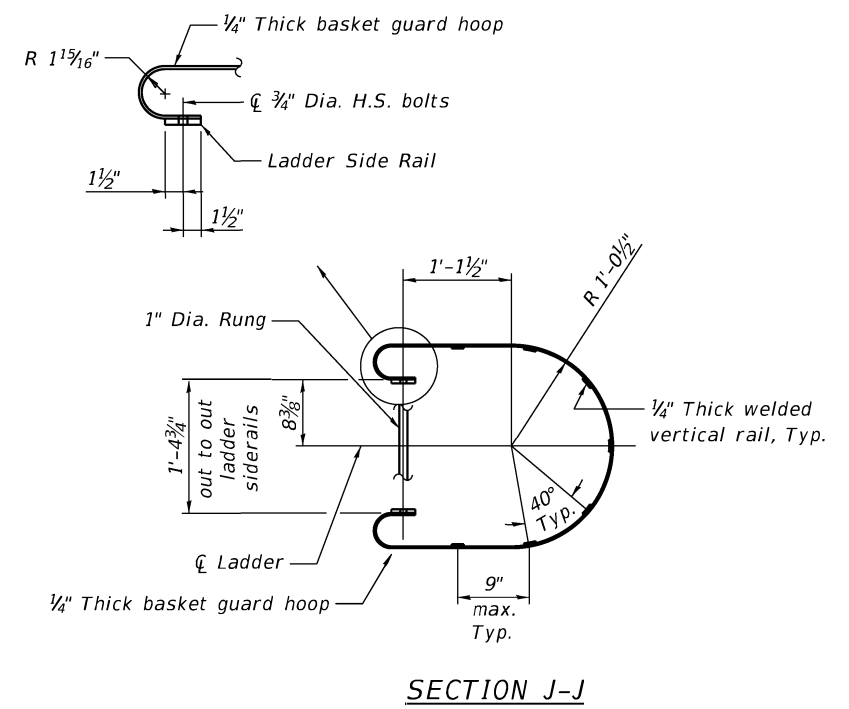
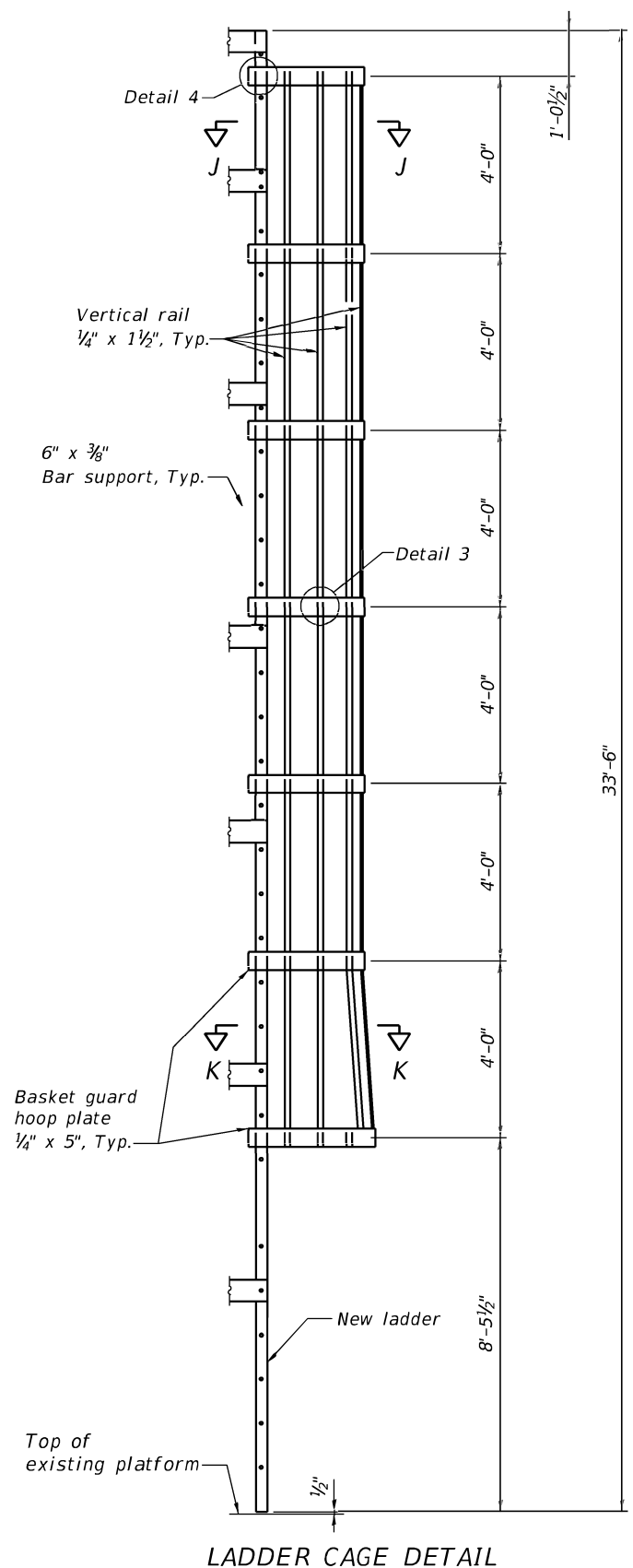
**S.N. 002-0005 - VERTICAL MEMBER 51
WHITE NAVIGATIONAL OBSTRUCTION LIGHTING ASSEMBLY DETAILS**

SCALE: _____ SHEET _____ OF _____ SHEETS STA. _____ TO STA. _____

F.A.S RTE.	SECTION	COUNTY	TOTAL SHEETS	SHEET NO.
944	138DI(1-10)	ALEXANDER	16	15
CONTRACT NO. 78964				

ILLINOIS FED. AID PROJECT

MODEL: Ladder Details
 FILE NAME: p:\110302\pw_bentley.com\p110302\Documents\DOT_Offices\District_9\Projects\78964\CADD\CADD\Sheets\0978964-Sheets.dgn



BILL OF MATERIAL

Item	Unit	Total
Access Ladder	Each	2

NOTES:

- Fasteners shall be ASTM A 325 Type 1, mechanically galvanized bolts.
- Structural steel for Access Ladder shall conform to M270 Grade 36 and shall be hot dip galvanized in accordance with the Hot Dip Galvanizing for Structural Steel special provision.
- Ladder and cage shall meet OSHA Requirements.
- For ladder details and additional notes, see sheets 14 & 15.
- All welds shall be $\frac{3}{16}$ " fillet welds and shall be all around and continuous, unless otherwise shown.
- All work shown on this sheet is included with pay item Access Ladder.

USER NAME = Ehren.Kirby	DESIGNED - _____	REVISED - _____
PLOT SCALE = 100.0000' / in.	CHECKED - _____	REVISED - _____
PLOT DATE = 4/7/2023	DATE - _____	REVISED - _____

**STATE OF ILLINOIS
 DEPARTMENT OF TRANSPORTATION**

**S.N. 002-0005 - VERTICAL MEMBER 51
 LADDER ATTACHMENT DETAILS**

SCALE: _____ SHEET _____ OF _____ SHEETS STA. _____ TO STA. _____

F.A.S. RTE.	SECTION	COUNTY	TOTAL SHEETS	SHEET NO.
944	138DI(1-10)	ALEXANDER	16	16
			CONTRACT NO. 78964	
ILLINOIS FED. AID PROJECT				