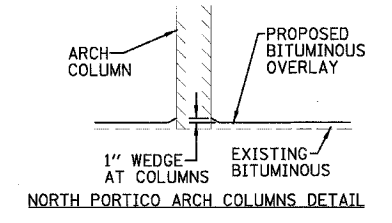
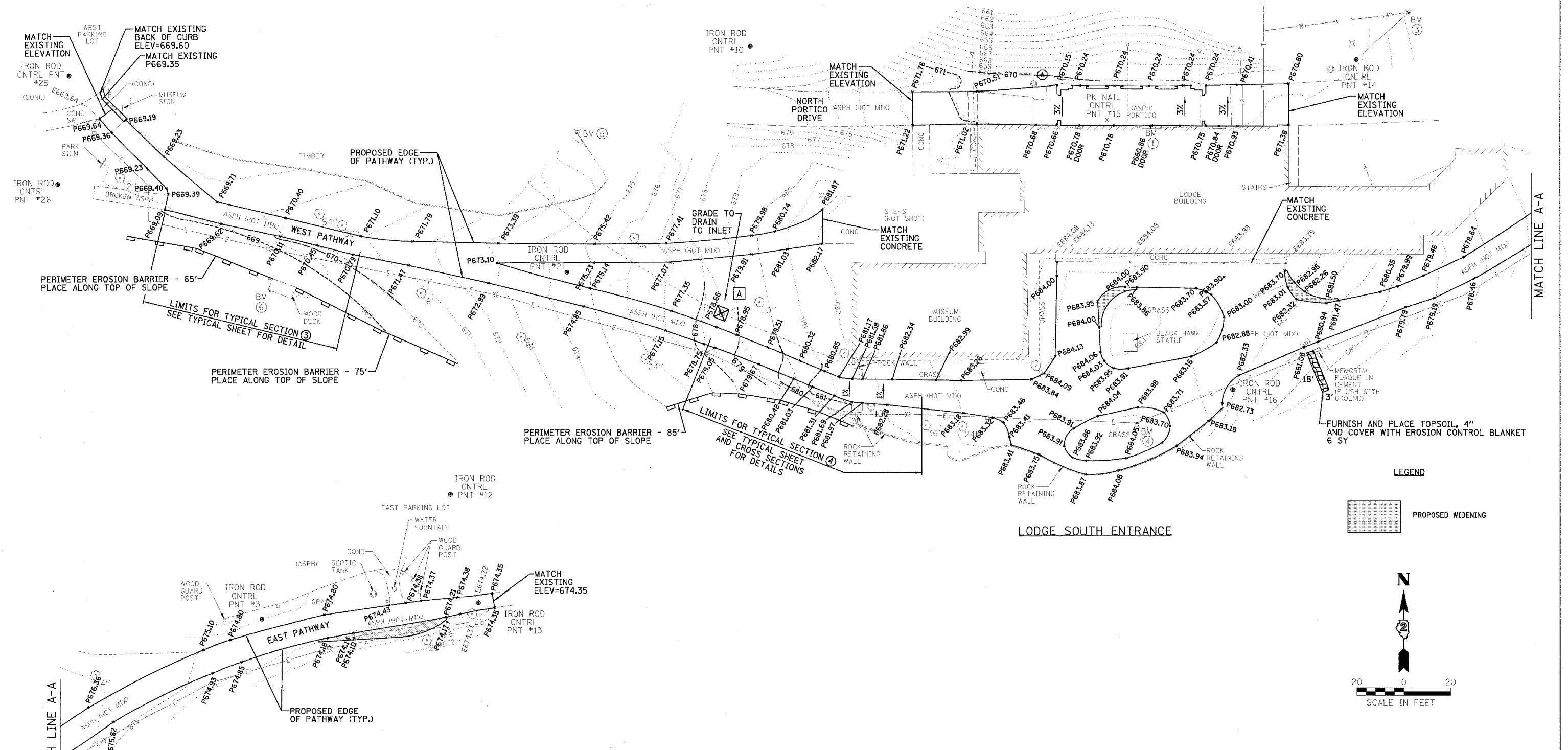


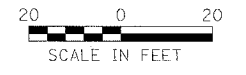
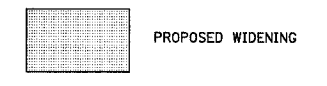
| | | | | |
|---------------------|---------------------------|-------------|--------------|-----------|
| F.A. RTE. | SECTION | COUNTY | TOTAL SHEETS | SHEET NO. |
| | | ROCK ISLAND | 9 | 8 |
| STA. | TO STA. | | | |
| FED. ROAD DIST. NO. | ILLINOIS FED. AID PROJECT | | | |



NOTE:
THE CONTRACTOR SHALL CONSTRUCT BITUMINOUS WEDGES (1") ALONG INSIDE OF THE NORTH WALLS OF PORTICO TO INSURE WATER DRAINAGE OUT OF THE OPENINGS OF THE PORTICO.



LEGEND



| REVISIONS | |
|-----------|------|
| NAME | DATE |
| | |
| | |
| | |
| | |
| | |

ILLINOIS DEPARTMENT OF TRANSPORTATION
PROPOSED CONTOUR AND ELEVATION PLAN
IDOT / IHPA
BLACK HAWK STATE HISTORIC SITE

SCALE: VERT. _____
HORIZ. _____
DATE _____ DRAWN BY _____
CHECKED BY _____

DATE: 5/02/05
FILE: 24-7524-8
SCALE: 1"=40'
USER: PJM

| | | |
|---------------------------|---|---------------------|
| DESIGNED BY LAW | <p>Farnsworth GROUP 2709 McGraw Drive Bloomington, Illinois 61704 309/863-6435, 309/863-1671 fax</p> | FILE NO. 24-7524 |
| DRAWN BY DRR | | DATE 5/02/05 |
| CHECKED BY PJM | | SHEET NO. 8 OF 9 |
| | | |