

FAU	SECTION	COUNTY	TOTAL SHEETS	SHEET NO.
2760	1316RS-1	COOK	22	1

STATE OF ILLINOIS
DEPARTMENT OF TRANSPORTATION
DIVISION OF HIGHWAYS

**PROPOSED
HIGHWAY PLANS**

**FAU2760(SHERMER ROAD)
SECTION 1316RS-1
WILLOW ROAD TO OLD WILLOW ROAD
COOK COUNTY
C-91-245-99**

FOR INDEX OF SHEETS, SEE SHEET NO. 2

THE IMPROVEMENT IS LOCATED IN THE VILLAGE OF GLENVIEW IN COOK COUNTY

AVERAGE DAILY TRAFFIC = 14,600

POSTED SPEED LIMIT = 35 MPH



NOTE: WHEREVER IN THESE PLANS OR 42 LS MENTIONED IT SHALL MEAN FAU 2760.

STATE OF ILLINOIS
DEPARTMENT OF TRANSPORTATION
DIVISION OF HIGHWAYS

SUBMITTED March 21, 20 05

Dina O'Keefe
DEPUTY DIRECTOR OF HIGHWAYS, REGION ENGINEER

May 13, 20 05
Mike Nune
ENGINEER OF DESIGN AND ENVIRONMENT

May 13, 20 05
Victor Modesto
DIRECTOR OF HIGHWAYS, CHIEF ENGINEER

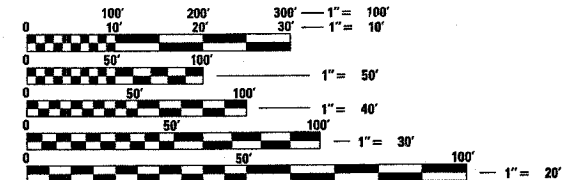
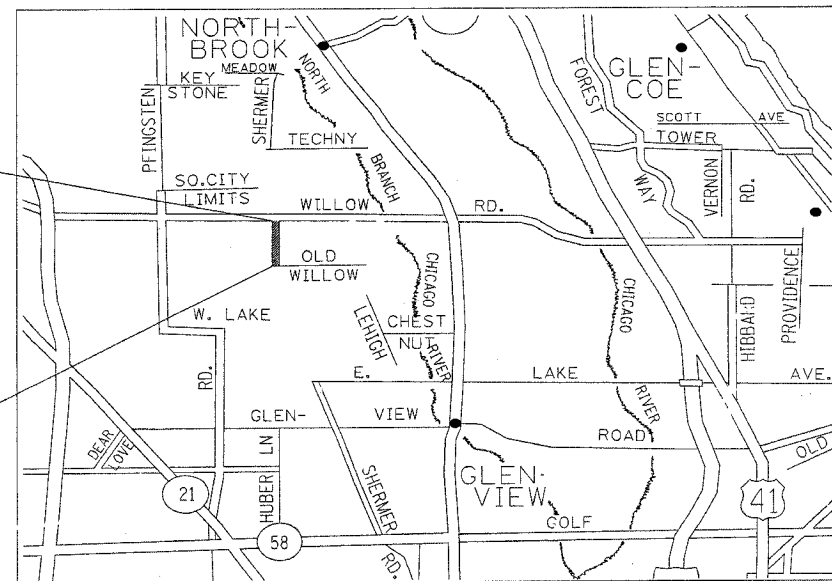
**PRINTED BY THE AUTHORITY
OF THE STATE OF ILLINOIS**

DISTRICT 1 DESIGN PLAN PREPARATION ENGINEER: KEN ENG /R. SHAH (847) 705-4437



IMPROVEMENT ENDS
STATION 44+17

IMPROVEMENT BEGINS
STATION 18+13



FULL SIZE PLANS HAVE BEEN PREPARED USING STANDARD ENGINEERING SCALES. REDUCED SIZED PLANS WILL NOT CONFORM TO STANDARD SCALES IN MAKING MEASUREMENTS ON REDUCED PLANS, THE ABOVE SCALES MAY BE USED.

J.U.L.I.E.
JOINT UTILITY LOCATION INFORMATION FOR EXCAVATION
1-800-892-0123

GROSS LENGTH OF IMPROVEMENT = 2,604 LINEAL FEET = 0.500 MILES
NET LENGTH OF IMPROVEMENT = 2,604 LINEAL FEET = 0.500 MILES

CONTRACT NO. 60754

Rev

03/10/05 11:17 AM