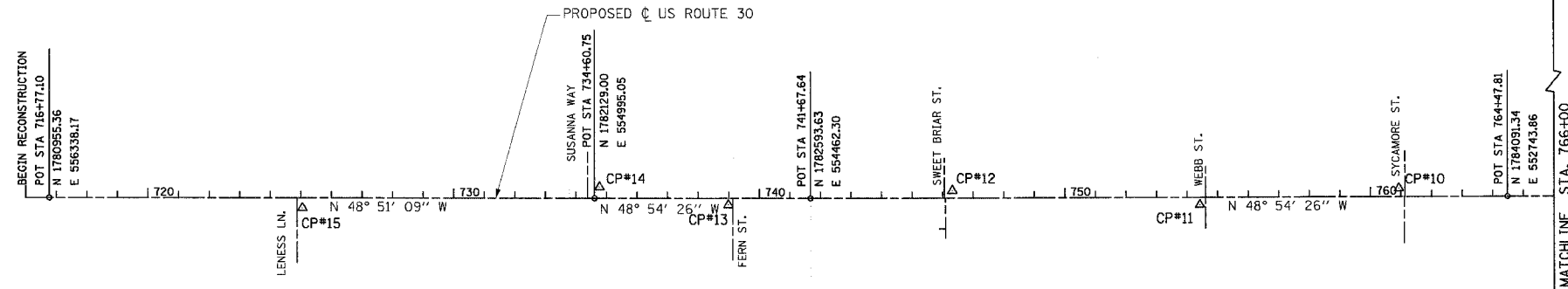
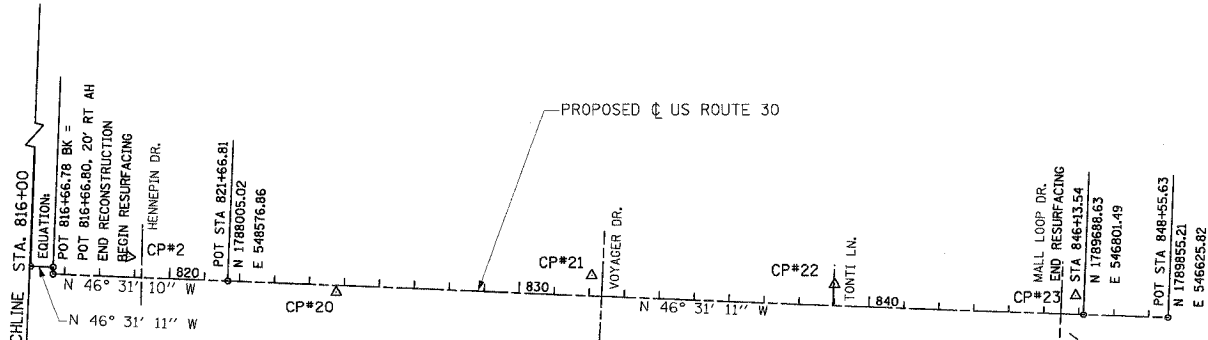
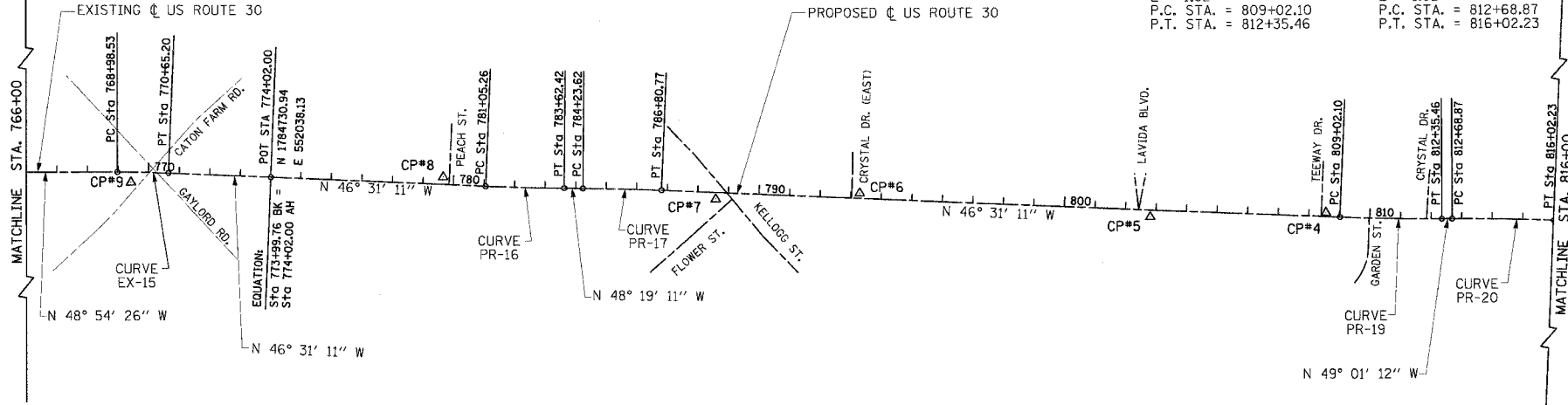


F.A.P. RTE.	SECTION	COUNTY	TOTAL SHEETS	SHEET NO.
575	(B&I) R-3	WILL	390	33
STA.		TO STA.		
FED. ROAD DIST. NO.		ILLINOIS FED. AID PROJECT		
CONTRACT NO. 60961				



<p>EXIST. CURVE EX-15 PI STA. = 769+81.88 $\Delta = 2^\circ 23' 15''$ (RT) $D = 1^\circ 28' 57''$ $R = 4,000.00'$ $T = 83.35'$ $L = 166.67'$ $M = 0.87'$ P.C. STA. = 768+98.53 P.T. STA. = 770+65.20</p>	<p>PROP. CURVE PR-16 PI STA. = 782+33.85 $\Delta = 1^\circ 48' 00''$ (LT) $D = 0^\circ 42' 00''$ $R = 8,185.53'$ $T = 128.59'$ $L = 257.16'$ $M = 1.01'$ P.C. STA. = 781+05.26 P.T. STA. = 783+62.42</p>	<p>PROP. CURVE PR-17 PI STA. = 785+52.20 $\Delta = 1^\circ 48' 00''$ (RT) $D = 0^\circ 42' 00''$ $R = 8,185.53'$ $T = 128.59'$ $L = 257.16'$ $M = 1.01'$ P.C. STA. = 784+23.62 P.T. STA. = 786+80.77</p>	<p>PROP. CURVE PR-19 PI STA. = 810+68.81 $\Delta = 2^\circ 30' 00''$ (LT) $D = 0^\circ 45' 00''$ $R = 7,639.83'$ $T = 166.71'$ $L = 333.36'$ $M = 1.82'$ P.C. STA. = 809+02.10 P.T. STA. = 812+35.46</p>	<p>PROP. CURVE PR-20 PI STA. = 814+35.58 $\Delta = 2^\circ 30' 00''$ (RT) $D = 0^\circ 45' 00''$ $R = 7,639.83'$ $T = 166.71'$ $L = 333.36'$ $M = 1.82'$ P.C. STA. = 812+68.87 P.T. STA. = 816+02.23</p>
---	---	---	---	---



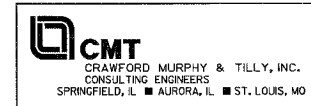
LEGEND:
 ▲ CONTROL POINT (CP)

REVISIONS	
NAME	DATE

ILLINOIS DEPARTMENT OF TRANSPORTATION
ALIGNMENT, TIES & BENCHMARKS
 US ROUTE 30
 SHEET 1 OF 2

SCALE: VERT. NONE
 HORIZ. 1"=200'
 DATE: 3/1/05

DRAWN BY: SNH
 CHECKED BY: KDF



I:\d01006602\drawb\dsheets\arb01.dgn