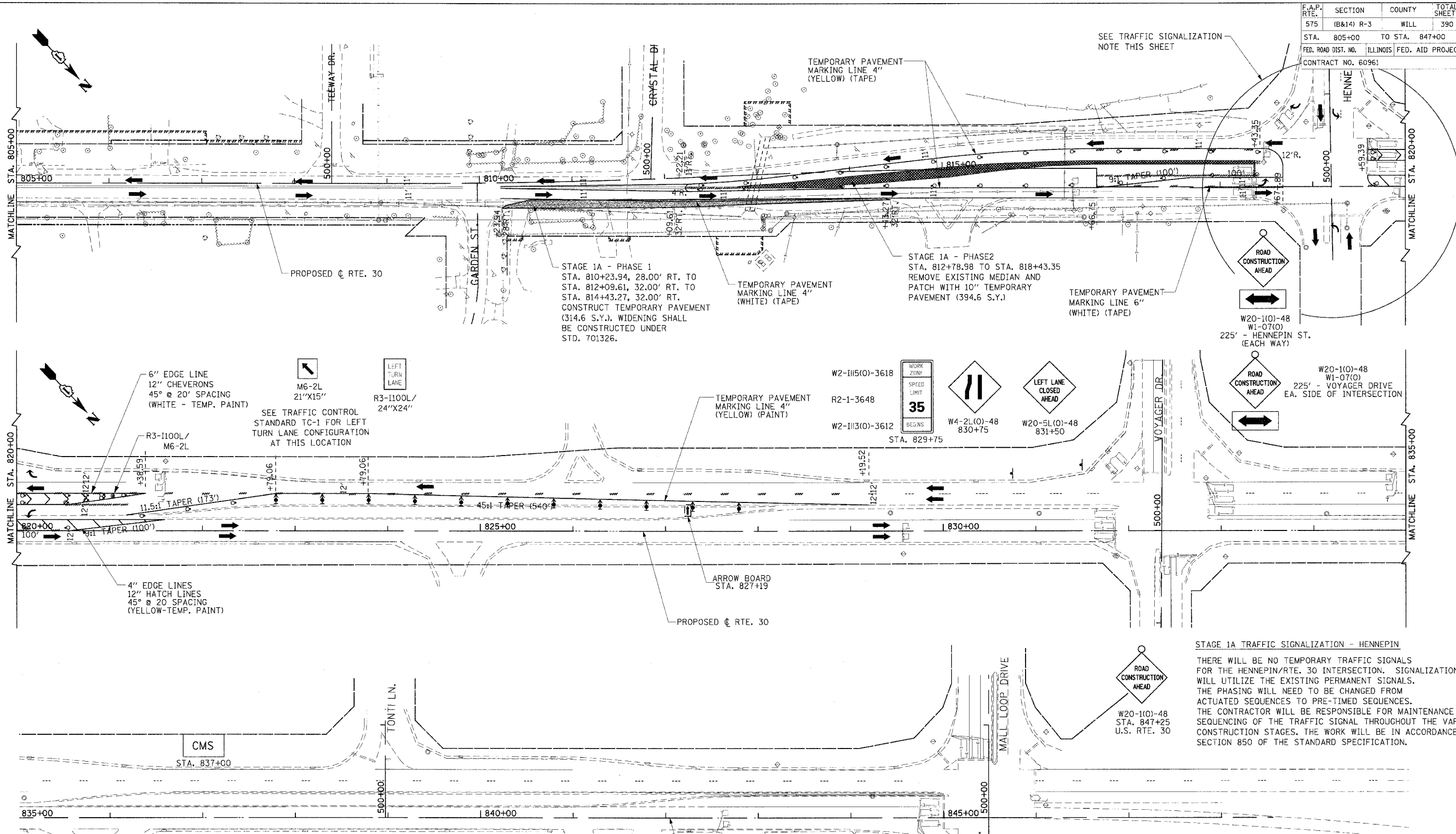


F.A.P. RTE.	SECTION	COUNTY	TOTAL SHEET SHEETS	NO.
575	(B&I4) R-3	WILL	390	44
STA. 805+00		TO STA. 847+00		
FED. ROAD DIST. NO.		ILLINOIS FED. AID PROJECT		
CONTRACT NO. 60961				



STAGE 1A - PHASE 1  
 STA. 810+23.94, 28.00' RT. TO  
 STA. 812+09.61, 32.00' RT. TO  
 STA. 814+43.27, 32.00' RT.  
 CONSTRUCT TEMPORARY PAVEMENT  
 (314.6 S.Y.). WIDENING SHALL  
 BE CONSTRUCTED UNDER  
 STD. 701326.

STAGE 1A - PHASE 2  
 STA. 812+78.98 TO STA. 818+43.35  
 REMOVE EXISTING MEDIAN AND  
 PATCH WITH 10" TEMPORARY  
 PAVEMENT (394.6 S.Y.)

STAGE 1A TRAFFIC SIGNALIZATION - HENNEPIN  
 THERE WILL BE NO TEMPORARY TRAFFIC SIGNALS  
 FOR THE HENNEPIN/RTE. 30 INTERSECTION. SIGNALIZATION  
 WILL UTILIZE THE EXISTING PERMANENT SIGNALS.  
 THE PHASING WILL NEED TO BE CHANGED FROM  
 ACTUATED SEQUENCES TO PRE-TIMED SEQUENCES.  
 THE CONTRACTOR WILL BE RESPONSIBLE FOR MAINTENANCE AND  
 SEQUENCING OF THE TRAFFIC SIGNAL THROUGHOUT THE VARIOUS  
 CONSTRUCTION STAGES. THE WORK WILL BE IN ACCORDANCE WITH  
 SECTION 850 OF THE STANDARD SPECIFICATION.

TEMPORARY PAVEMENT MARKINGS		
TAPE, TYPE III		
4" LINE	WHITE	1,250 L.F.
6" LINE	WHITE	100 L.F.
PAINT		
4" LINE	YELLOW	1,220 L.F.
6" LINE	WHITE	362 L.F.
12" CHEVRONS	WHITE	103 L.F.
12" HATCH	YELLOW	971 L.F.

PAVEMENT MARKINGS REMOVAL		
4" EXISTING	124 S.F.	
4" EXISTING	234 S.F.	
4" EXISTING	6.5 S.F.	
TEMPORARY PAVEMENT		
STA. 810+32.87 TO 814+36.43	190.2 SQ. YDS.	TEMPORARY PAVEMENT (10") - WIDENING
STA. 812+78.98 TO 818+43.35	314.6 SQ. YDS.	TEMPORARY PAVEMENT (10") - MEDIAN

REVISIONS	
NAME	DATE

ILLINOIS DEPARTMENT OF TRANSPORTATION  
**SUGGESTED MAINTENANCE OF TRAFFIC PLAN**  
**STAGE 1A**  
 SHEET 10 OF 26  
 SCALE: VERT. NONE  
 HORIZ. 1"=50'  
 DATE: 3/1/05  
 DRAWN BY: SNH  
 CHECKED BY: SBP

**CMT**  
 CRAWFORD MURPHY & TILLY, INC.  
 CONSULTING ENGINEERS  
 SPRINGFIELD, IL ■ AURORA, IL ■ ST. LOUIS, MO

I:\d01000602\draw\bid\sheet\m01a\_3.dgn